



AZHADI  
VINEYARDS



[ AZIZI ARCHITECT Inc. ]

## AZHADI VINEYARDS

3778 HILLTOWN DRIVE, KELOWNA, BC.

Development Variance Permit  
Public Hearing

September 21, 2021

## 2.1 AZHADI WINES VISION

### Celebration of unique culture of Canada

- The story of the vineyard and winery will embody East and Western historical influences. In Canada, we celebrate our diverse backgrounds
- Historically integrative design elements are appreciated, ie the ancient Persian origins of wine and architecture
- Mike & Janet Azhadi along with their extended families are proud Canadians. They have a personal and emotional connection to Canada and call Okanagan home while their original roots are from Iran and Europe.

### Creating a Place of Gratitude

- Winery is to be an intimate sanctuary
- Ancient Persian teaching: Good thoughts, Good deeds, Good words
- Organic elements, natural shapes and colors are preferred
- The expansive view of the lake, mountains & vineyard instills a deep sense of gratitude.

### Establishing a Gathering Place

- Winery to be accessible & enjoyable for people to celebration of agriculture.
- Sustainable farming practice and ultimately the wine act as catalysts to bring people together to celebrate life and appreciate humanity
- Winery is to be a philanthropic catalyst - Members are acknowledged, as a portion of profits from purchasing cases of wine goes to charities.
- Creating a venue/space for continued support to multiple NGO's.

### Fit-Form-Function

- Architectural design works in harmony with sustainable vineyard management and wine making
- Space utilization & efficient equipment layout is highly valued
- Operational efficiency metrics are critical to operating a successful business, maximizing vineyard potential
- Thoughtful Phasing & Expandability will be required.





## 3.2 MASTER PLAN GENERAL VIEW





### 3.2 MASTER PLAN GENERAL VIEW



### 4.3 WINERY BUILDING – BUILDING HEIGHT

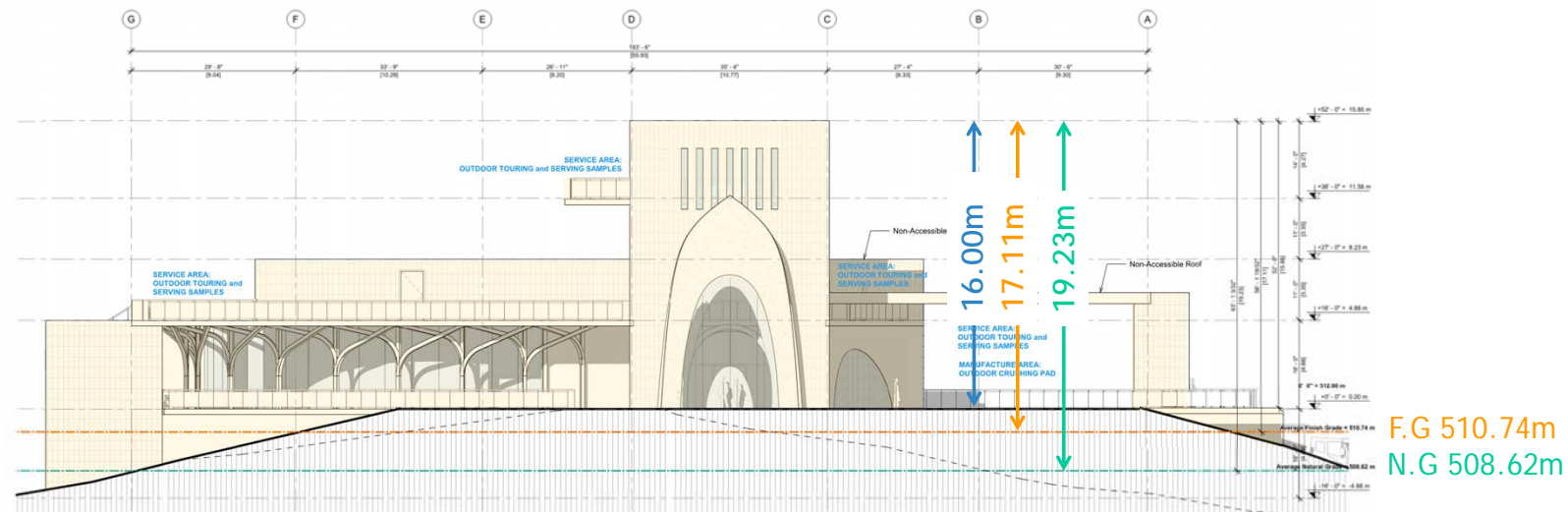
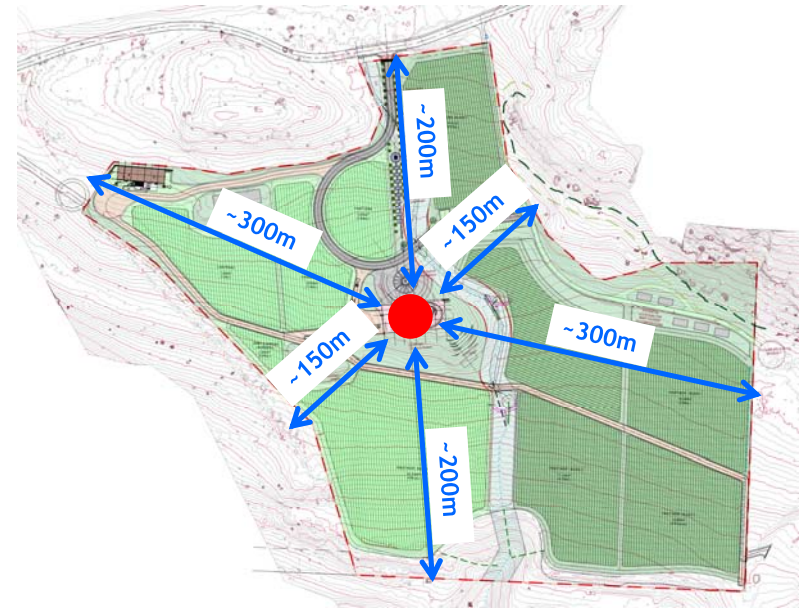
The Winery building will be a mixed-use building of "Agricultural Structure" and "Alcohol Production Facilities" use. Per City of Kelowna's Zoning bylaw Section 11 - Agricultural Zones, table 11.1 to accompany section 11.1.6 Development Regulations, the maximum allowed building height is 16.0m for "Agriculture Structure" and 9.5m for "Alcohol Production Facilities building".

Per building height definition on 6.6.1 of City of Kelowna's Section 6 – General Development regulations:

In determining whether a development conforms to the maximum height permitted in any zone, structures such as chimney stacks, aeriels, antennae, water towers, wind machines, monuments, observation and transmission towers, farm silos, steeples, elevator housings, roof stairway entrances, ventilating equipment, firewalls, skylights, or flagpoles for federal, provincial, or municipal flags shall not be considered for the purpose of determining the height.

Although the "observation and Transmission Tower" is not considered for the purpose of determining the height, but to reduce the budling footprint and increase landscape and planting area, it is combined with the main winery building, which has increased the total building height to 19.5m.

Winery building is located in the center of the vineyard, where its height has





## 5.1 WINERY GENERAL VIEW

FROM VINEYARD'S MAIN ENTRANCE TO THE WEST

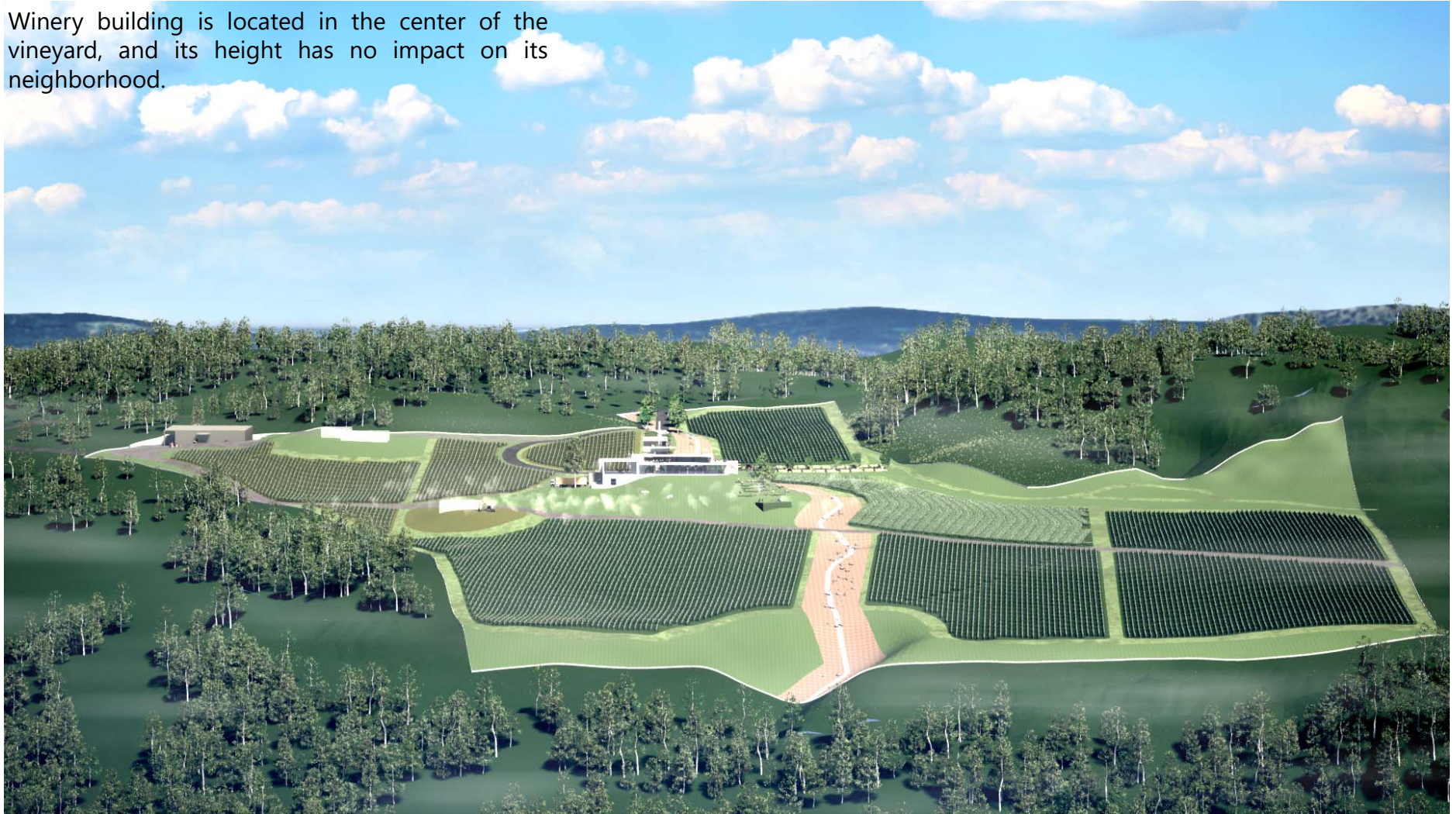




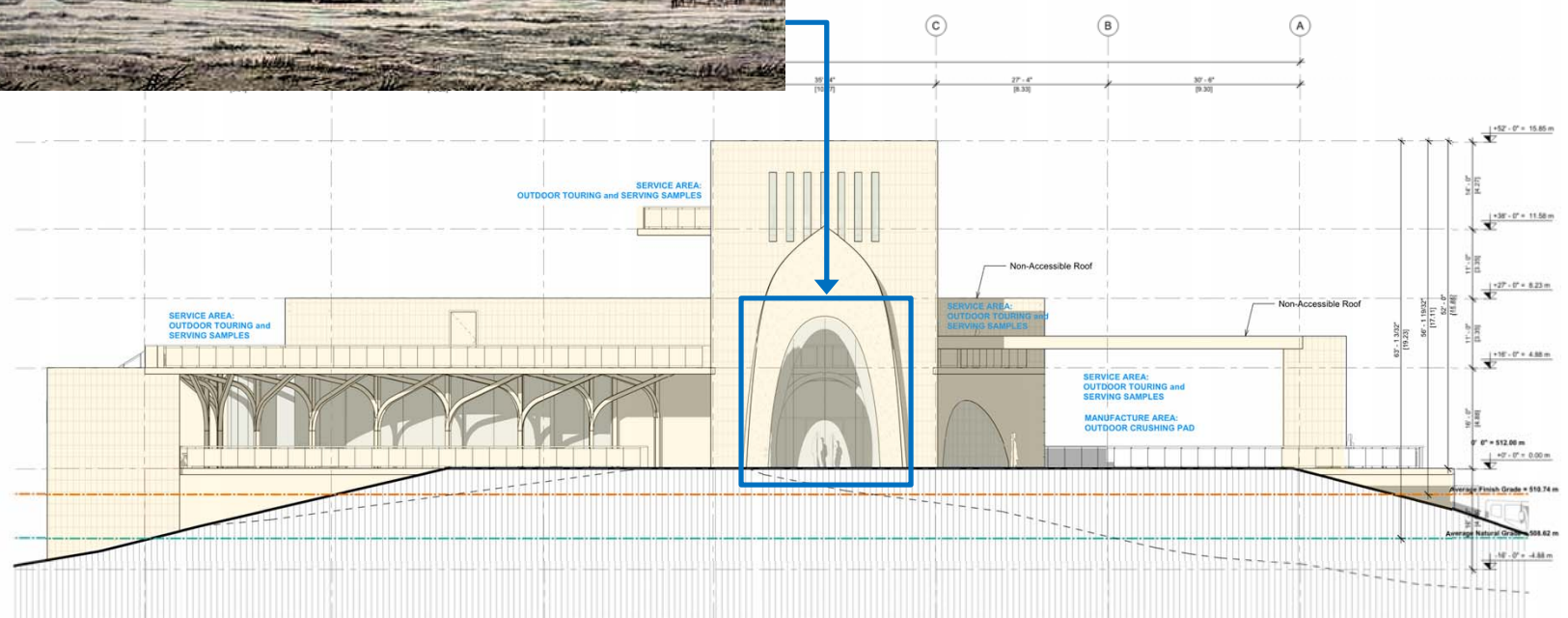
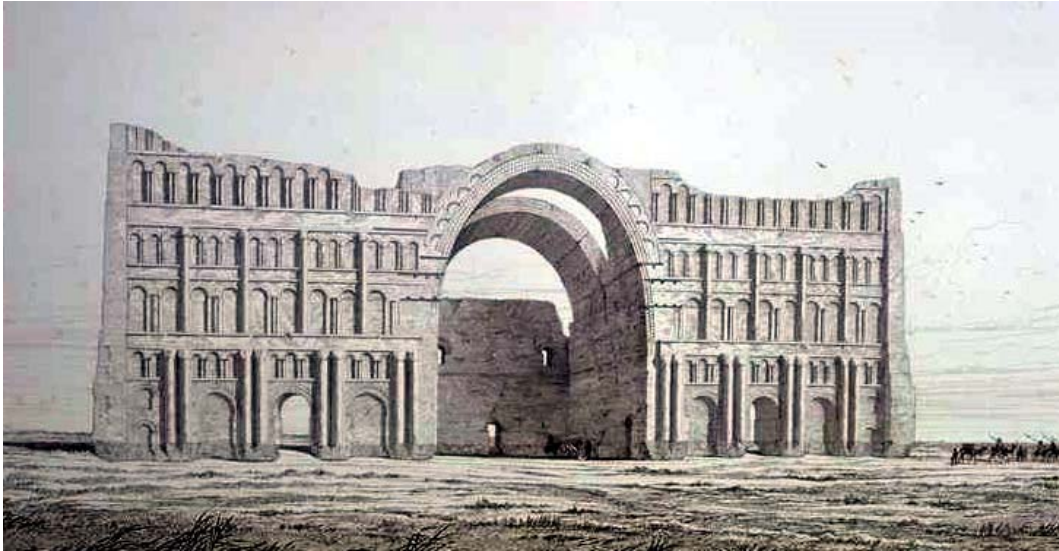
## 5.1 WINERY GENERAL VIEW

### FROM WEST TO THE EAST

Winery building is located in the center of the vineyard, and its height has no impact on its neighborhood.



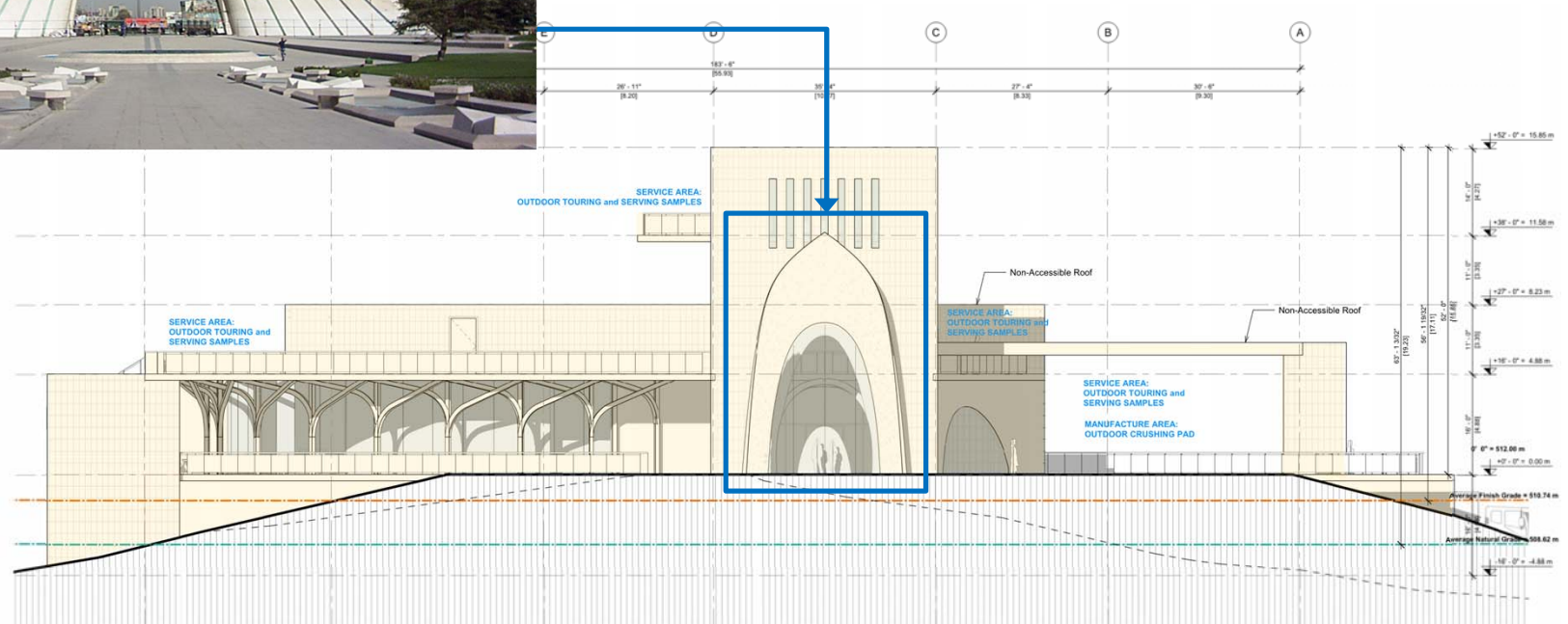
## Taq Kasra – Architect: Unknown





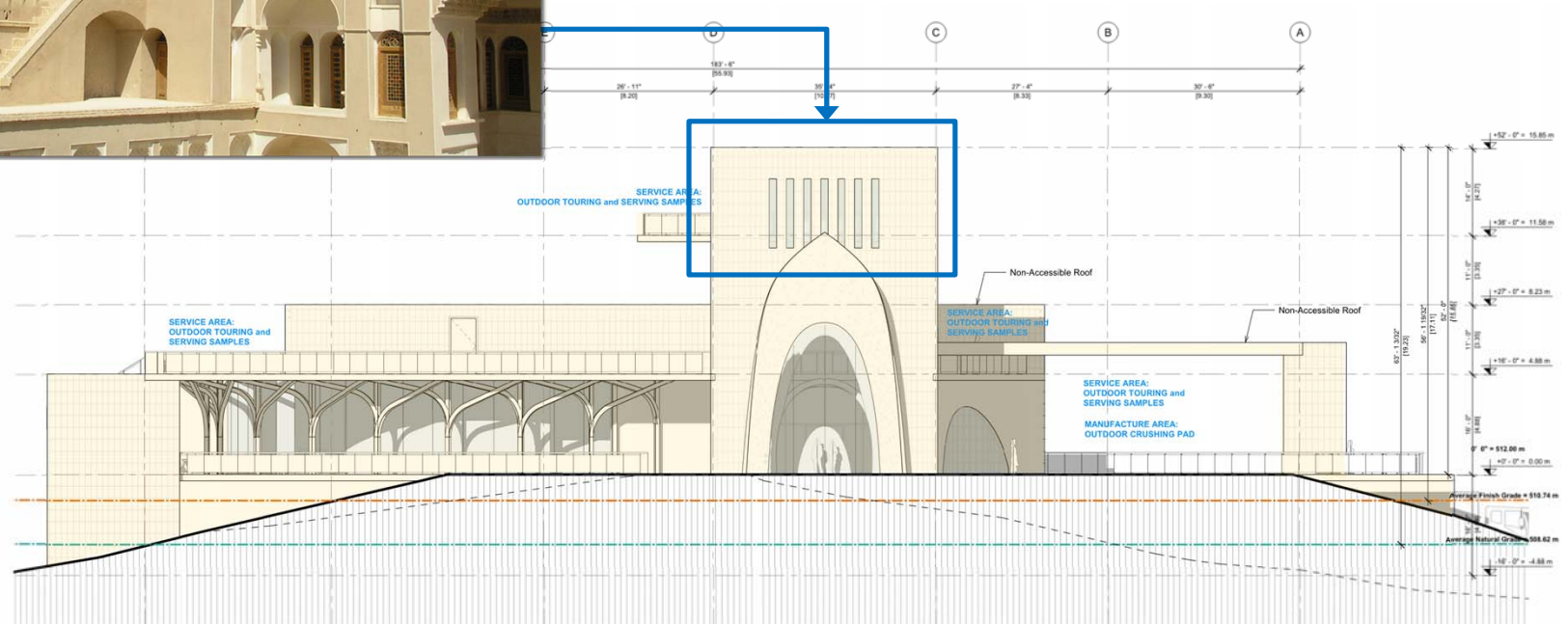
## 6.1 Reflecting Iranian Motifs

Azadi Monument – Architect: Hossein Amanat



## 6.1 Reflecting Iranian Motifs

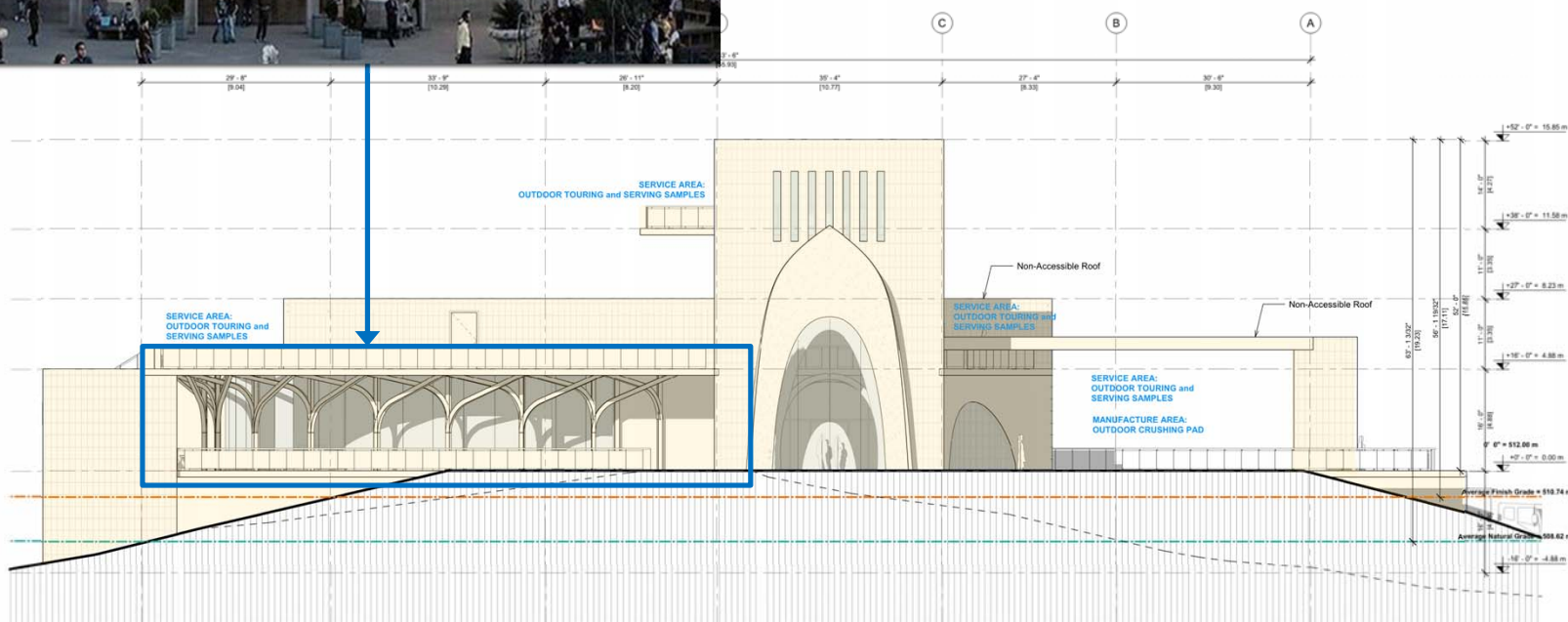
Wind Catcher – Architect: Unknown



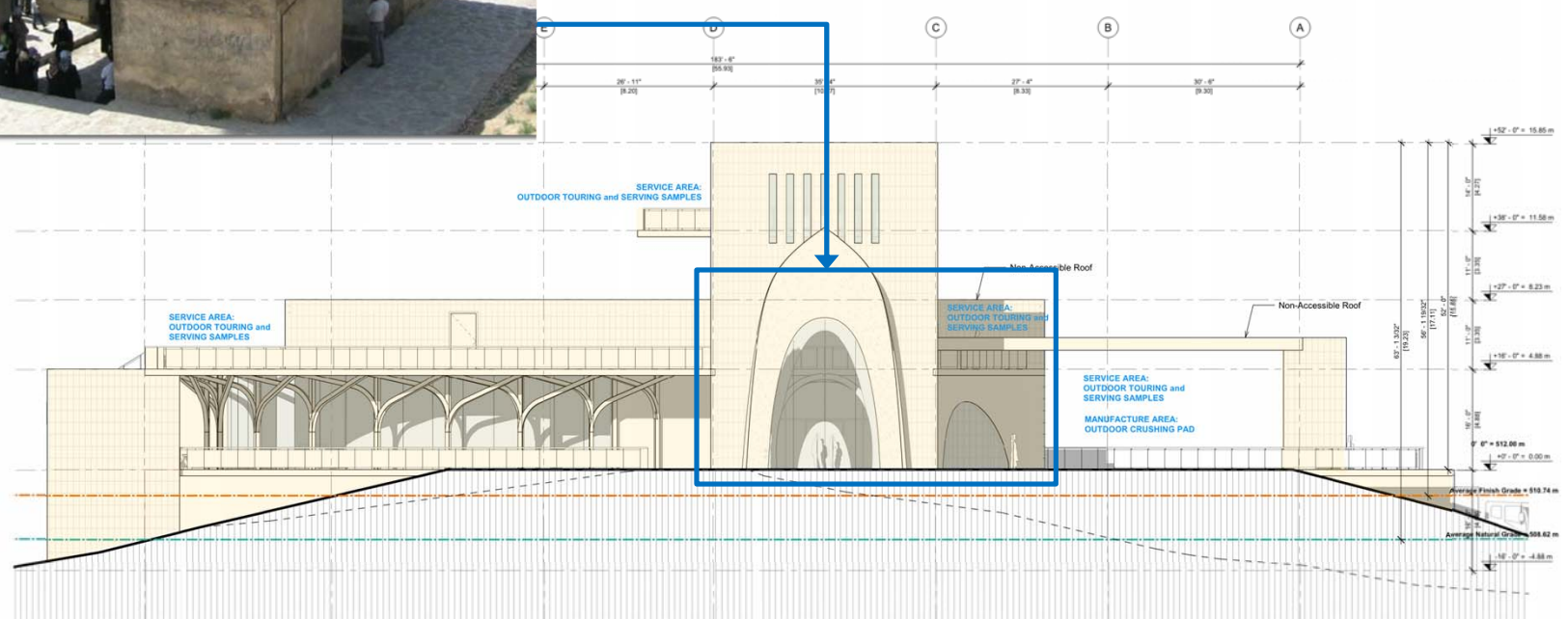
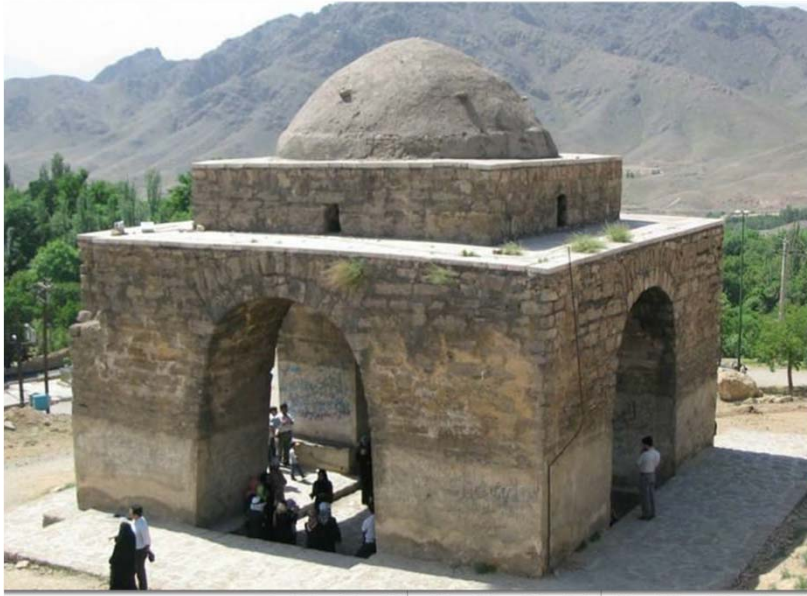


## Tehran City Theater – Architect Amir Ali Sardar Afkhami

## Tehran City Theater – Architect Amir Ali Sardar Afkhami



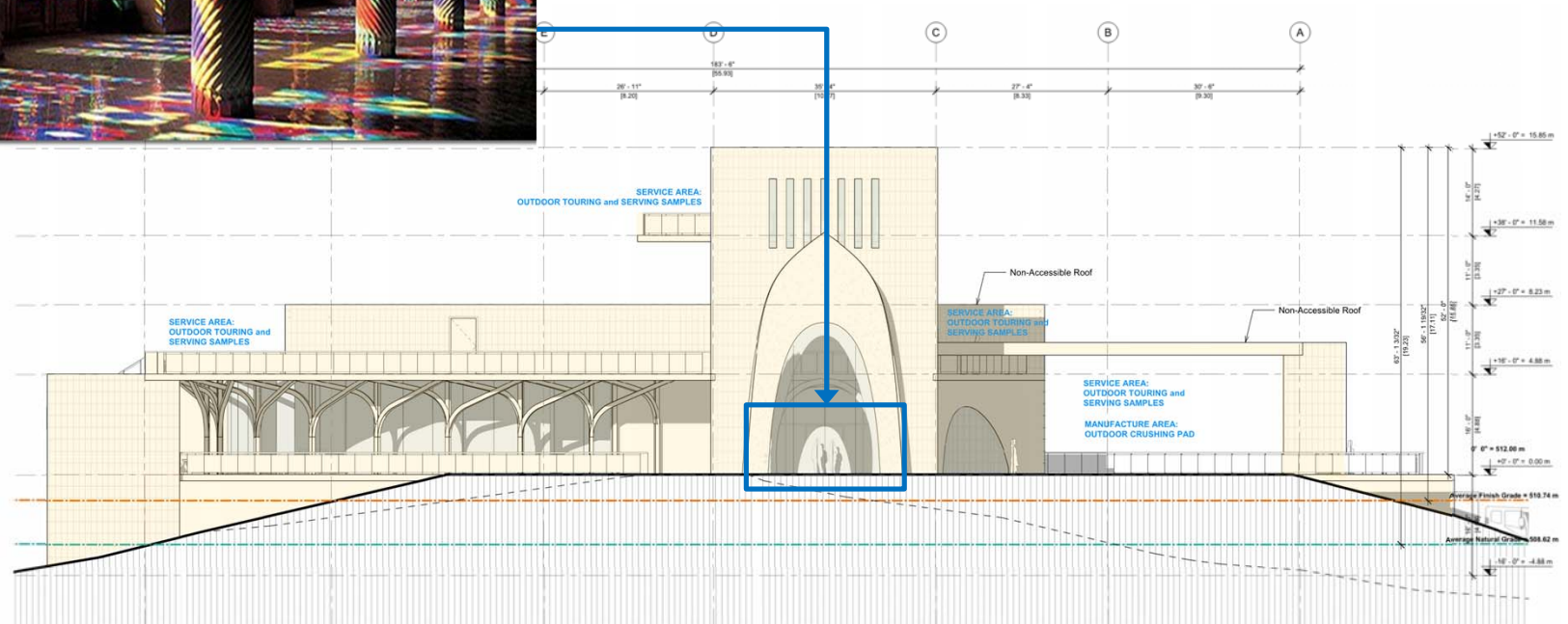
## Fire Temple – Architect: Unknown





## 6.1 Reflecting Iranian Motifs

Stain Glass – Architect: Unknown



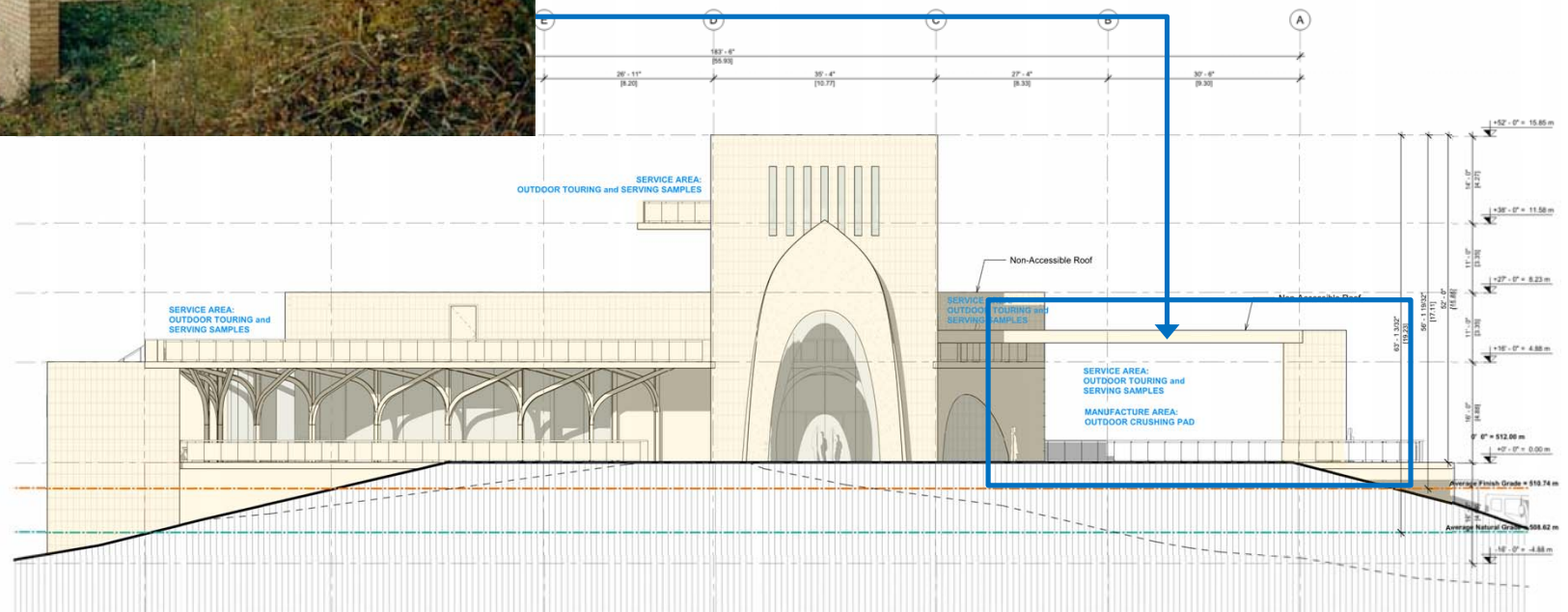
## Khayyam Tomb – Architect: Houshang Seihoon





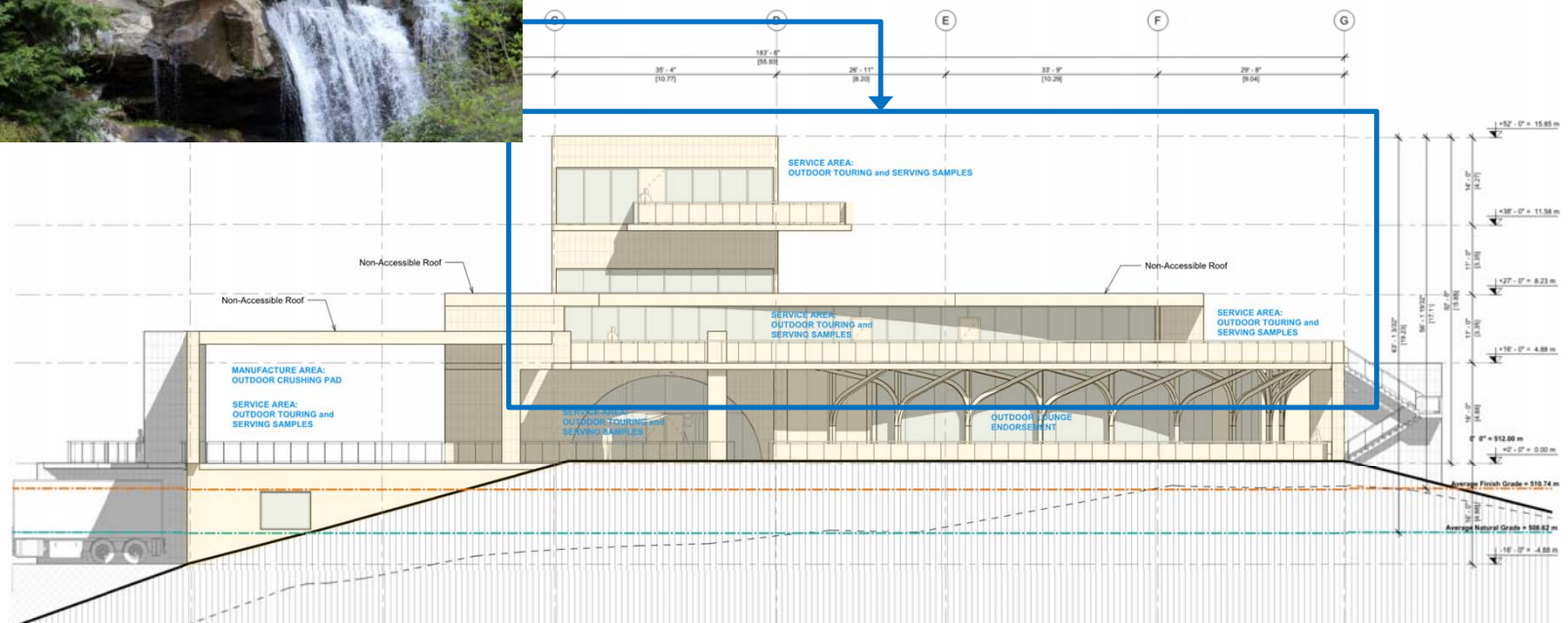
## 6.2 Reflecting Modern Architectural Motifs

Hillborn House- Architect: Arthour Ericson



## 6.2 Reflecting Modern Architectural Motifs

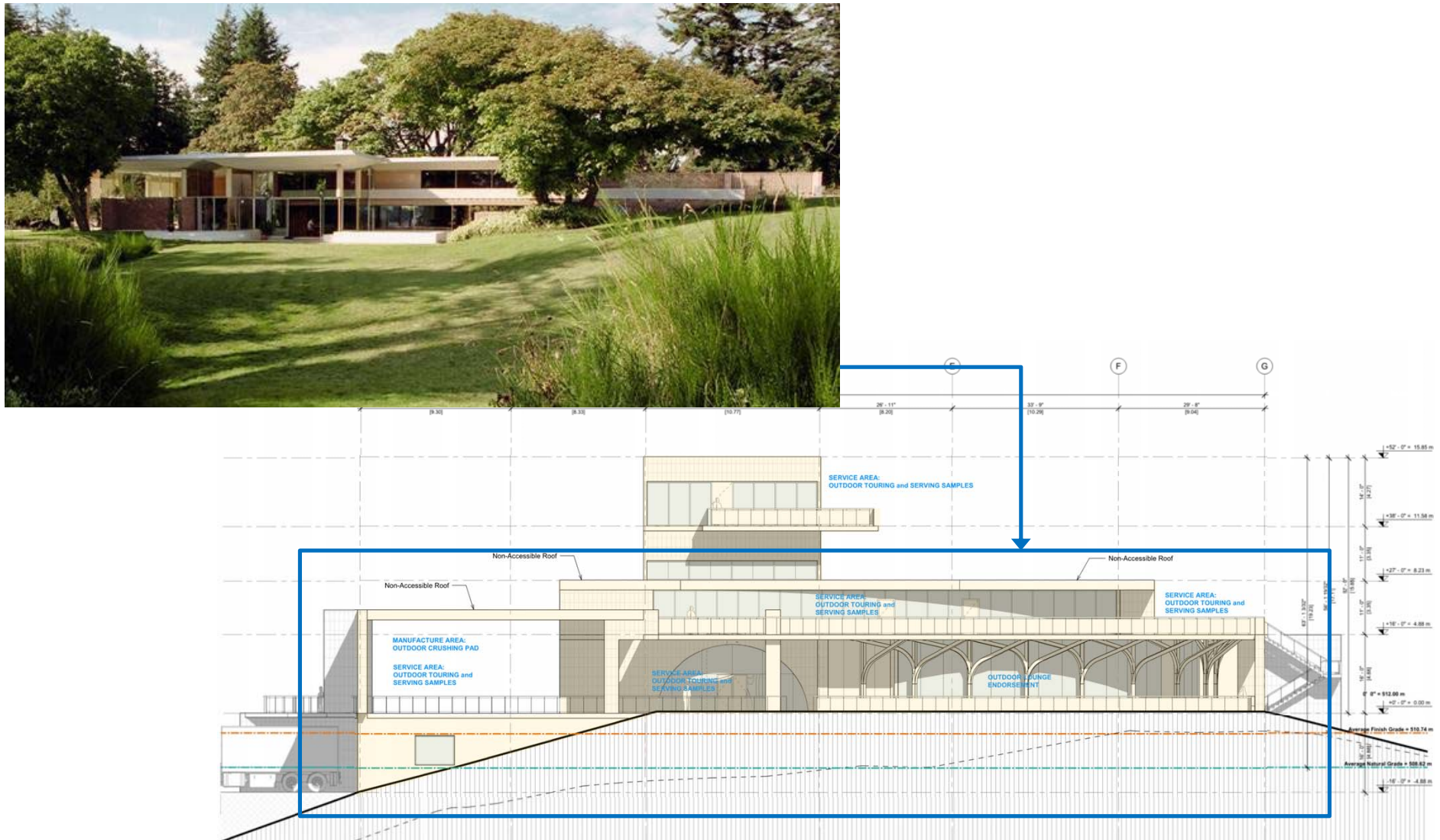
Fallingwater House – Architect: Frank Lloyd Wright





## 6.2 Reflecting Modern Architectural Motifs

Filberg House – Architect: Arthur Erickson



## 7. WINERY GENERAL VIEW

### EAST ELEVATION





## 7. WINERY GENERAL VIEW

### WEST ELEVATION





## 7. WINERY GENERAL VIEW

### SOUTH ELEVATION





## 7. WINERY GENERAL VIEW

### NORTH ELEVATION





## FROM THE LAKE TO THE VINEYARD





# GRATITUDE

- ▶ Any Questions regarding the Building Height - DVP?
- ▶ Any Other Questions are welcome?