



# Z21-0052 681 Paret Place

Rezoning Application



# Proposal

- ▶ To rezone the subject property from RU1 to RU1c to facilitate the development of a carriage house.

# Development Process

May 12, 2021

Development Application Submitted

Staff Review & Circulation

May 26, 2021

Public Notification Received

Aug 9, 2021

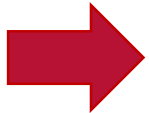
Initial Consideration

Public Hearing  
Second & Third Readings

Final Reading

Building Permit

Council  
Approvals



# Context Map





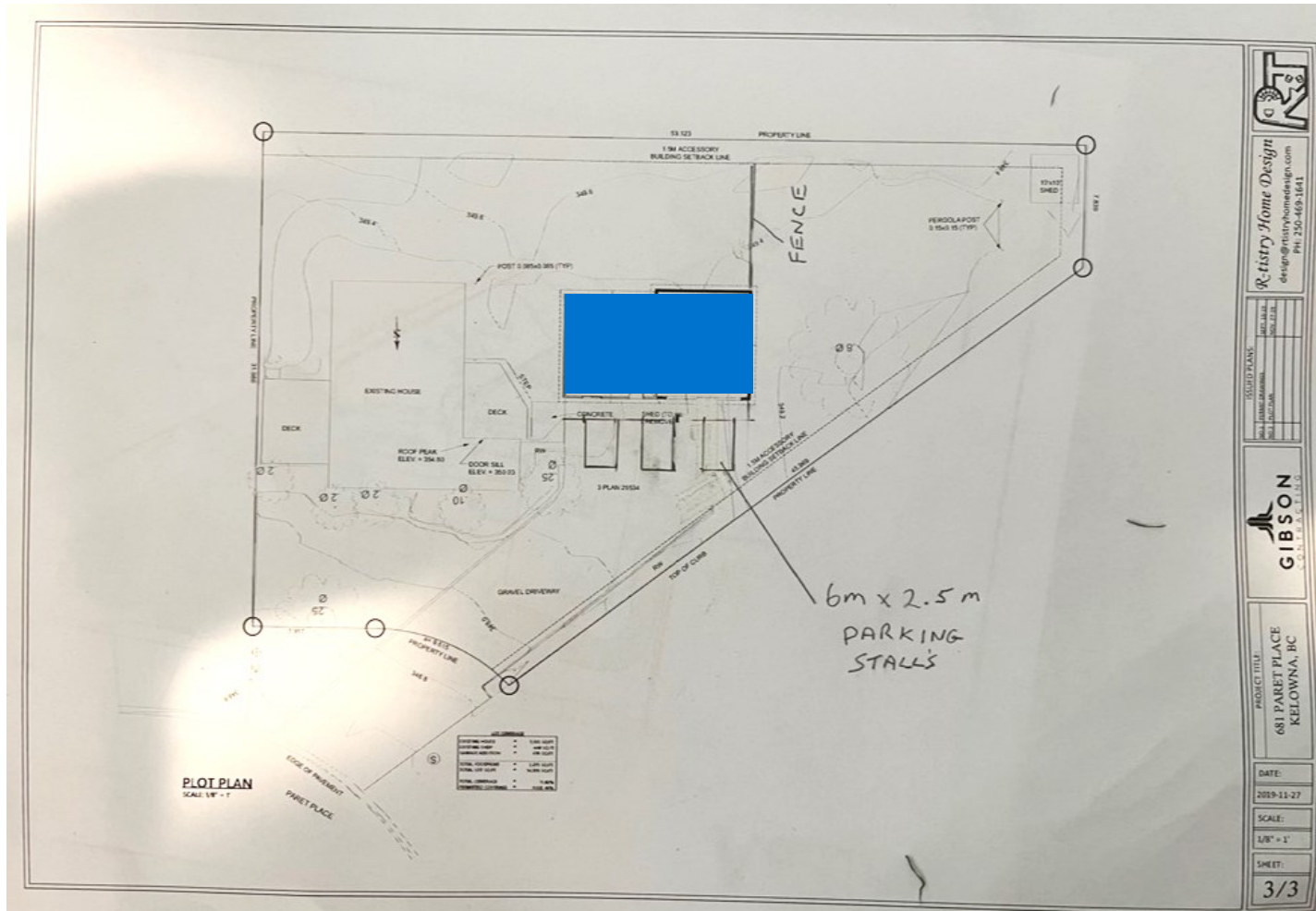
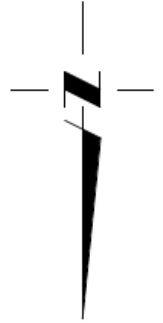
# Subject Property Map







# Conceptual Site Plan



# Development Policy

- ▶ Meets the intent of Official Community Plan Urban Infill Policies:
  - ▶ Within Permanent Growth Boundary
  - ▶ Complete Communities
  - ▶ Sensitive Infill
  - ▶ Carriage Houses and Accessory Apartments
- ▶ Consistent with Zoning Bylaw – no variances



# Staff Recommendation

- ▶ Staff recommend **support** of the proposed rezoning to facilitate development of a carriage house
  - ▶ Meets the intent of the Official Community Plan
    - ▶ Urban Infill Policies
    - ▶ Appropriate location for adding residential density
- ▶ Recommend the Bylaw be forwarded to Public Hearing



## *Conclusion of Staff Remarks*