



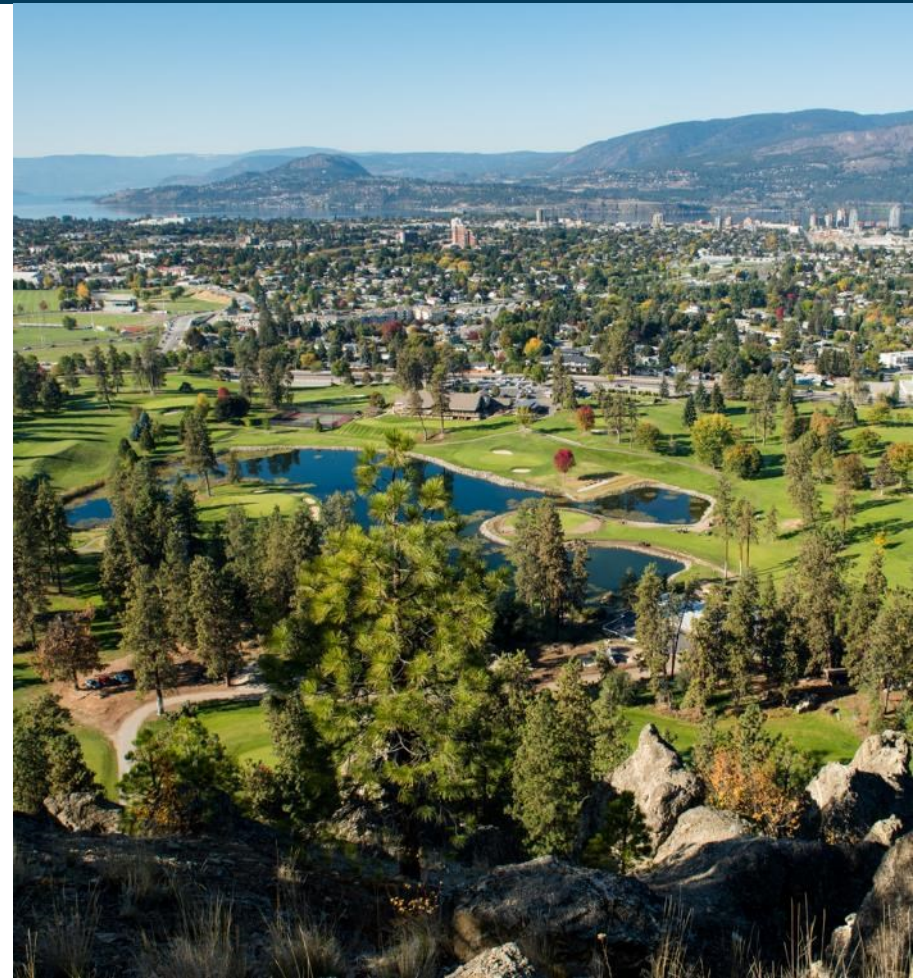
2040

Official
Community Plan

Purpose of Phase 4 Engagement

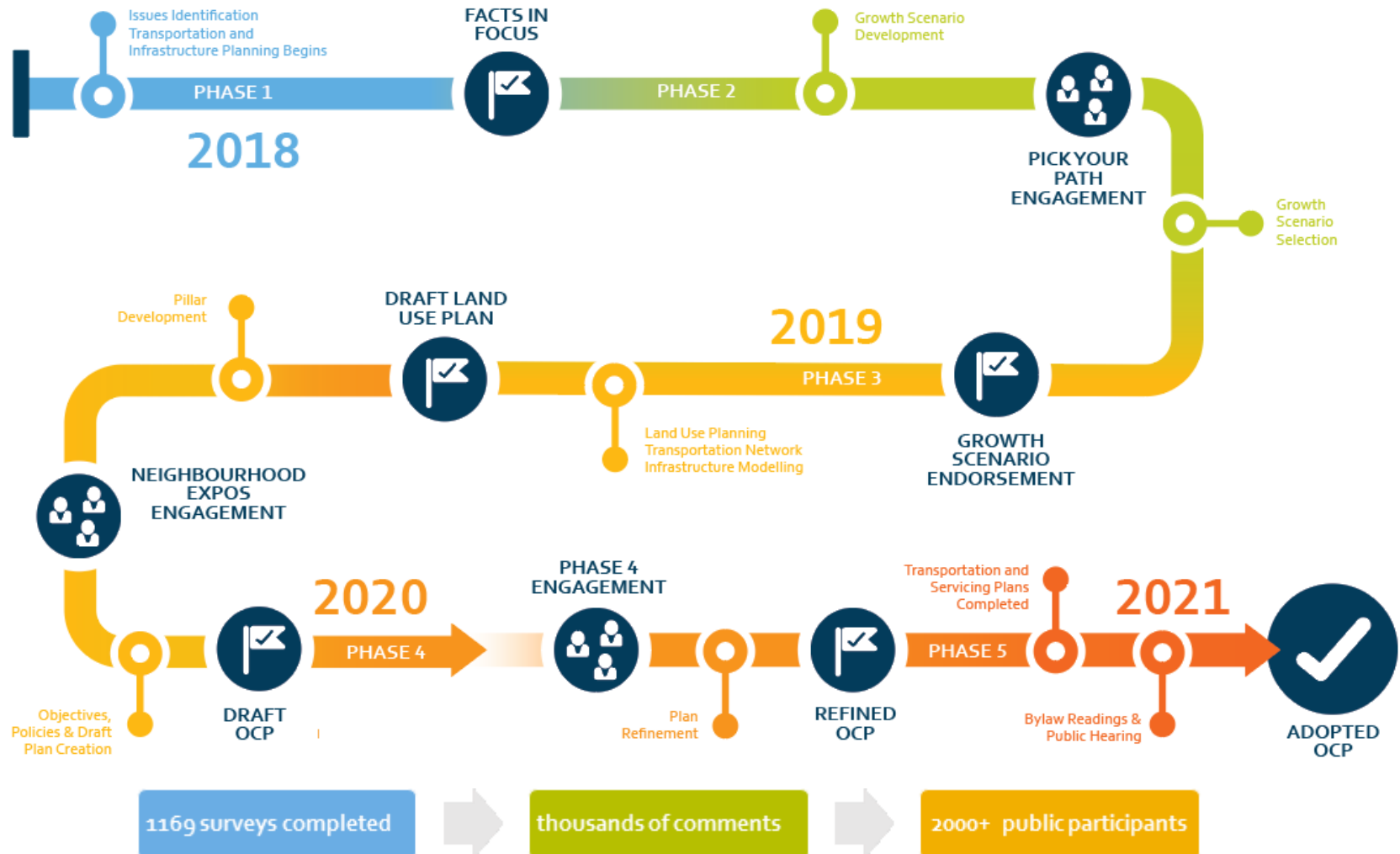
Inform and consult on the following:

- Key directions for Urban Centres
- Key directions for residential infill in the Core Area
- Key directions for Suburban Neighbourhoods and agricultural lands
- Key directions for climate action and environmental preservation





Process & Engagement Overview



Phase 4 Engagement Approach



2040 OCP engagement site

Survey, Q&A, Discussion Forum

Jan 29-March 31

3x virtual focus groups

Feb 11: Climate action & environment

Feb 25: Urban Centres & infill

March 11: Agricultural lands & suburbs



Stakeholder meetings

Jan-May

City Hall interactive display

March 17-31



Stakeholder Engagement

School District #23
Urban Development Institute
Kelowna South-Central Association of Neighbourhoods
Tourism Kelowna
KLO Neighbourhood Association
Okanagan College
University of British Columbia
Regional District of Central Okanagan (RGSSC)
Kelowna Business Associations
Regional District of Central Okanagan (Staff)
Heritage Stakeholders
Equity and Inclusion Stakeholders
Ministry of Transportation and Infrastructure and BC Transit
Ministry of Agriculture
Environmental and Climate Stakeholders
Agricultural Land Commission Executive
Okanagan Mission Residents Association
Kettle Valley Neighbourhood Association
Agricultural Stakeholders
Kelowna Downtown Knox Mountain Association
Uptown Rutland Business Association
Engel and Volkers
Kelowna Arts Council
Agricultural Advisory Committee
ReMax Kelowna
Kelowna Chamber of Commerce



31
Stakeholder
Meetings

Get Involved Site



Online Focus Groups

Focus Group #1: Climate action and environment

DO MORE TO LIMIT SPRAWL DENSITY/CENTRALIZED GROWTH
PROTECTING SENSITIVE LANDS/SPECIES AT RISK AG EMISSIONS
GREENER CONSTRUCTION METHODS REDUCING CAR-DEPENDENCY
SOLAR PROJECTS VALUES-ALIGNED REGIONAL APPROACH
PRESERVING OKANAGAN LAKE STRONGER WORDING/CLARITY
TREE COVER CAR-FREE ZONES ENHANCING BIODIVERSITY
MORE AGGRESSIVE TIMELINES ADDRESSING ENERGY POVERTY
ACTIVE TRANSPORTATION STRONGER EMISSIONS TARGETS
ONGOING EDUCATION/OUTREACH/PROGRAMMING DATA/MONITORING
EV STATIONS IN NEW BUILDINGS PASSIVE HOUSE DESIGN
IMPLEMENTATION/FOLLOW THROUGH/STICK TO PLAN

Focus Group #2: Urban Centres and residential infill

COMMUNITY GARDENS ADHERENCE TO OCP WALKABILITY
UNIQUE APPROACH FOR EACH CENTRE GREAT STREETSCAPING
SUPPORT INDEPENDENT BUSINESS VS. 'BIG BOX' COMMERCIAL DENSITY
DIVERSE HOUSING TYPES/TENURES CO-HOUSING/ALTERNATIVE HOUSING
MIXED USES TRAFFIC CALMING HOUSING DIVERSITY IN CORE AREA AMENITIES
SENSE OF COMMUNITY/CONNECTION LIMITS ON BUILDING HEIGHTS HEIGHT MAPS
ACTIVE TRANSPORTATION COMPLETE THE BOULEVARDS FOR CORE AREA STREETS
CALIBRATING DCC RATE TO SQUARE FOOTAGE COMPLETE COMMUNITIES
PARKS / PUBLIC SPACE CLARITY AROUND APPROVAL PROCESS
BUILDING THAT REFLECT THEIR NEIGHBOURHOODS / VISUALLY INTERESTING

Focus Group #3: Agricultural lands and suburban neighbourhoods

HOUSING VARIETY DENSER SUBURBS
DISCOURAGE BIG CORPS IN VILLAGE CENTRES
MORE WALKABLE SUBURBS INFILL INCENTIVE
SUPPORT SMALL FARMERS VILLAGE CENTRES
TRAFFIC MITIGATION STRONGER LANGUAGE PLAYGROUNDS
PROTECTING AG LAND BROADER RANGE OF USES ON AG LAND
LIMIT NON-FARM USE OF AG LAND TRANSPORTATION OPTIONS
MORE COMPLETE SUBURBS TRAIL PRESERVATION COMMUNITY GARDENS
SMALLER FOOTPRINT FOR HOUSES SUSTAINABLE BUILDINGS
GREENER LANDSCAPING/DISCOURAGE LAWNS LIMITING NEW SUBURBAN DEV.

Engagement Results



Common themes

- Heard throughout the process
- Continued from previous phases

Targeted comments

- Not common throughout the process
- Important for refinement

The foundations of the plan continue to be supported.



Some areas of the plan will require further refinement.

OCP Pillars



Focus Investment
in Urban Centres



Stop Planning New
Suburban Neighbourhoods



Target Growth Along
Transit Corridors



Promote More Housing
Diversity



Incorporate Equity Into
City Building



Strengthen Kelowna as
the Region's Economic Hub



Protect Agriculture



Prioritize Sustainable Transportation
& Shared Mobility



Protect & Restore
Our Environment



Take Action on Climate

Overall Document and Implementation



Plan foundations and OCP pillars

Comprehensive document with wide scope



Pillars need some “plain language”

Plan could be condensed

OCP Implementation commitment

Urban Centre Development



Focused employment and residential density

Urban Centres as activity hubs

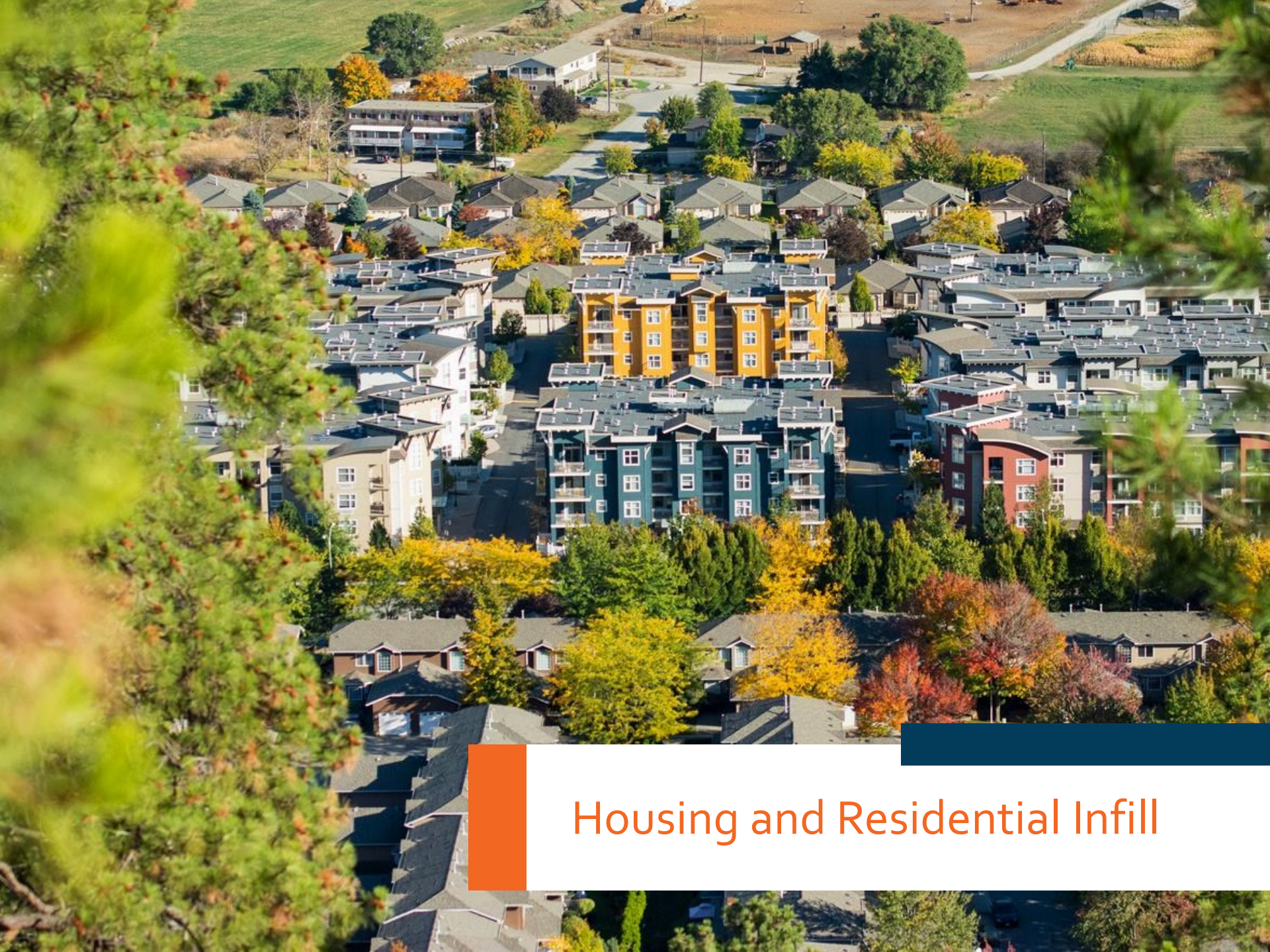
Transit Supportive Corridors



Building heights

Public safety

Mixed use along corridors



Housing and Residential Infill

Greater housing variety in the Urban Centres and the Core Area

Context sensitive approach to infill



Housing affordability

Infill form and character

Heritage protection

Suburban Neighbourhoods and Rural Lands



Slowing suburban growth
Completing existing neighbourhoods



Housing variety and affordability
Role of suburban growth
Complete communities and Village Centres

Equity and Inclusion



Focus on equity and inclusion throughout the plan



Lack of detail on how equity and inclusion will be implemented



Transportation, Parks and Infrastructure

Emphasis on transit, active transportation
Park investments in growing neighbourhoods
and along the lake



Investments to keep up with growth
More greenery in Urban Centres and Core
Area



Climate Action and Environment

Climate mitigation and adaptation
Land, water and air protection



More aggressive targets
More decisive action
Meaningful impact needed

Key Refinement Areas

The Big Picture and
OCP Pillars

Equity and Inclusion

Future Land Use
Refinements

Transit Supportive
Corridors

Building Heights

Plan Readability

Housing variety and
supply

Plan Implementation

Development Permit
Guidelines



Phases 4 & 5





2040 Official Community Plan