

CITY OF KELOWNA

BYLAW NO. 11274

Road Closure and Removal of Highway Dedication Bylaw (Portion of Lakeshore Road)

A bylaw pursuant to Section 40 of the Community Charter to authorize the City to permanently close and remove the highway dedication of a portion of highway on Lakeshore Road

NOW THEREFORE, the Municipal Council of the City of Kelowna, in open meeting assembled, hereby enacts as follows:

1. That portion of highway attached as Schedule "A" comprising 430.4m² shown in bold black as Closed Lane on the Reference Plan prepared by Cameron Henry, B.C.L.S., is hereby stopped up and closed to traffic and the highway dedication removed.
2. The Mayor and City Clerk of the City of Kelowna are hereby authorized to execute such conveyances, titles, survey plans, forms and other documents on behalf of the said City as may be necessary for the purposes aforesaid.

Read a first, second and third time by the Municipal Council this

Adopted by the Municipal Council of the City of Kelowna this

Mayor

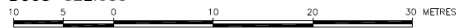
City Clerk

Bylaw No. 11274 - Page 2
Schedule "A"

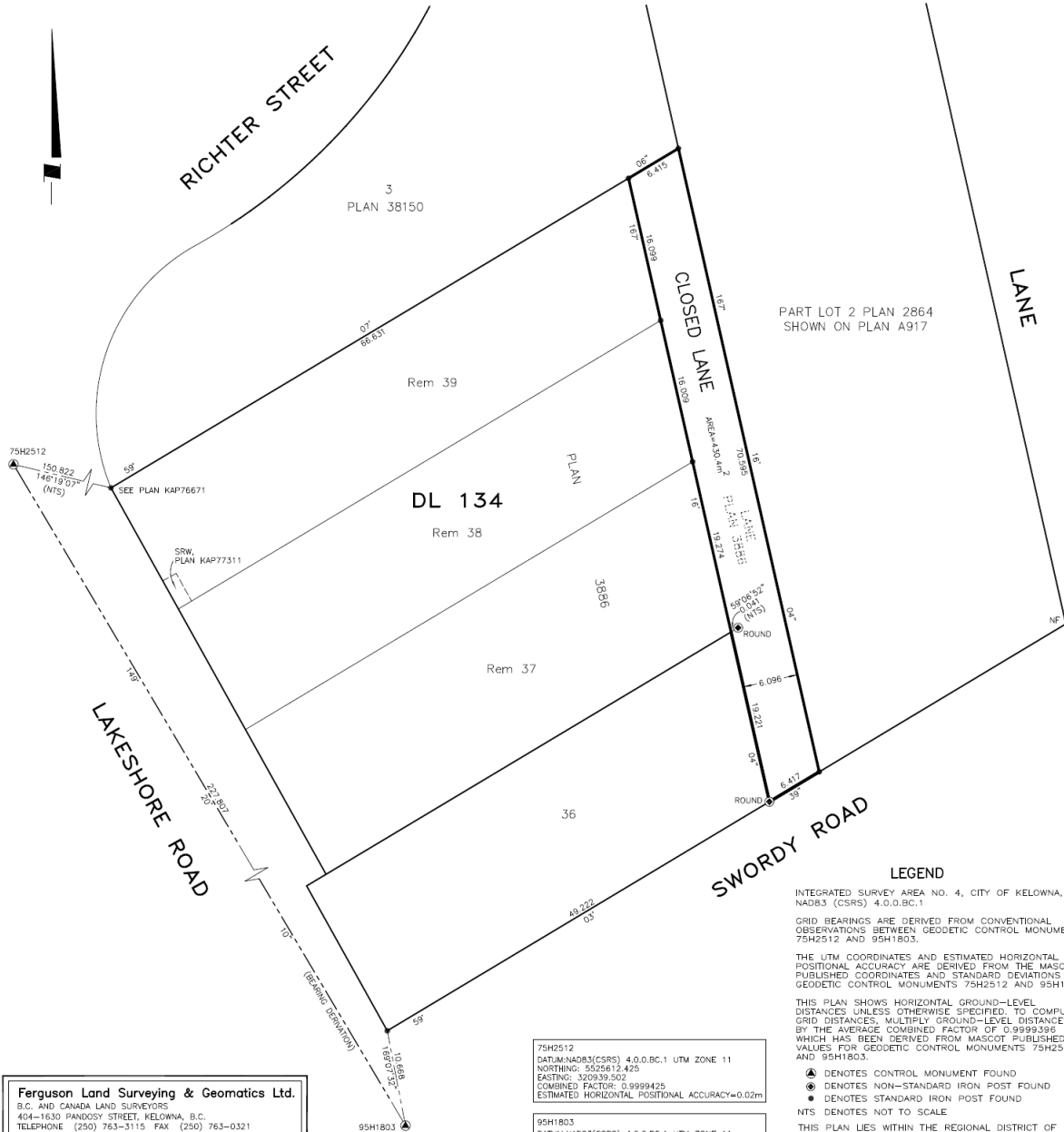
REFERENCE PLAN TO ACCOMPANY BYLAW NO. 11274
(CITY OF KELOWNA) TO CLOSE PART OF LANE
DEDICATED ON PLAN 3886 DISTRICT LOT 134
OSOYOOS DIVISION YALE DISTRICT

PLAN EPP65103

PURSUANT TO SECTION 120 OF THE LAND TITLE ACT AND SECTION 40 OF THE COMMUNITY CHARTER
BCGS 82E.083



THE INTENDED PLOT SIZE OF THIS PLAN IS 432mm IN WIDTH BY 560mm IN HEIGHT (C SIZE) WHEN PLOTTED AT A SCALE OF 1:300



Ferguson Land Surveying & Geomatics Ltd.
B.C. AND CANADA LAND SURVEYORS
404-1630 PANDOSY STREET, KELOWNA, B.C.
TELEPHONE (250) 763-3115 FAX (250) 763-0321

JOB No 20623-LANE CLOSURE
S:\Shared (Aug 10, 2006)\Job_Files\20623\20623-ROAD CLOSURE.DWG
DWGDT BY: CH F8/PG: 582 FILE

75H2512
DATUM: NAD83(CSRS) 4.0.0.BC.1 UTM ZONE 11
NORTHING: 5525612.425
EASTING: 525939.502
COMBINED FACTOR: 0.9999425
ESTIMATED HORIZONTAL POSITIONAL ACCURACY=0.02m

95H1803
DATUM: NAD83(CSRS) 4.0.0.BC.1 UTM ZONE 11
NORTHING: 5525416.483
EASTING: 521055.677
COMBINED FACTOR: 0.9999420
ESTIMATED HORIZONTAL POSITIONAL ACCURACY=0.02m

LEGEND

INTEGRATED SURVEY AREA NO. 4, CITY OF KELOWNA, NAD83 (CSRS) 4.0.0.BC.1
GRID BEARINGS ARE DERIVED FROM CONVENTIONAL OBSERVATIONS BETWEEN GEODETIC CONTROL MONUMENTS 75H2512 AND 95H1803.
THE UTM COORDINATES AND ESTIMATED HORIZONTAL POSITIONAL ACCURACY ARE DERIVED FROM THE MASCOT PUBLISHED COORDINATES AND STANDARD DEVIATIONS FOR GEODETIC CONTROL MONUMENTS 75H2512 AND 95H1803.
THIS PLAN SHOWS HORIZONTAL GROUND-LEVEL DISTANCES UNLESS OTHERWISE SPECIFIED. TO COMPUTE GRID DISTANCES, MULTIPLY GROUND-LEVEL DISTANCES BY THE AVERAGE COMBINED FACTOR OF 0.9999396 WHICH HAS BEEN DERIVED FROM MASCOT PUBLISHED VALUES FOR GEODETIC CONTROL MONUMENTS 75H2512 AND 95H1803.
▲ DENOTES CONTROL MONUMENT FOUND
● DENOTES NON-STANDARD IRON POST FOUND
● DENOTES STANDARD IRON POST FOUND
NTS DENOTES NOT TO SCALE
THIS PLAN LIES WITHIN THE REGIONAL DISTRICT OF CENTRAL OKANAGAN.
THE FIELD SURVEY REPRESENTED BY THIS PLAN WAS COMPLETED ON THE 11th DAY OF AUGUST, 2016 CAMERON HENRY, BCLS 857