



DP18-0193

934 Laurier Ave

Development Permit Application



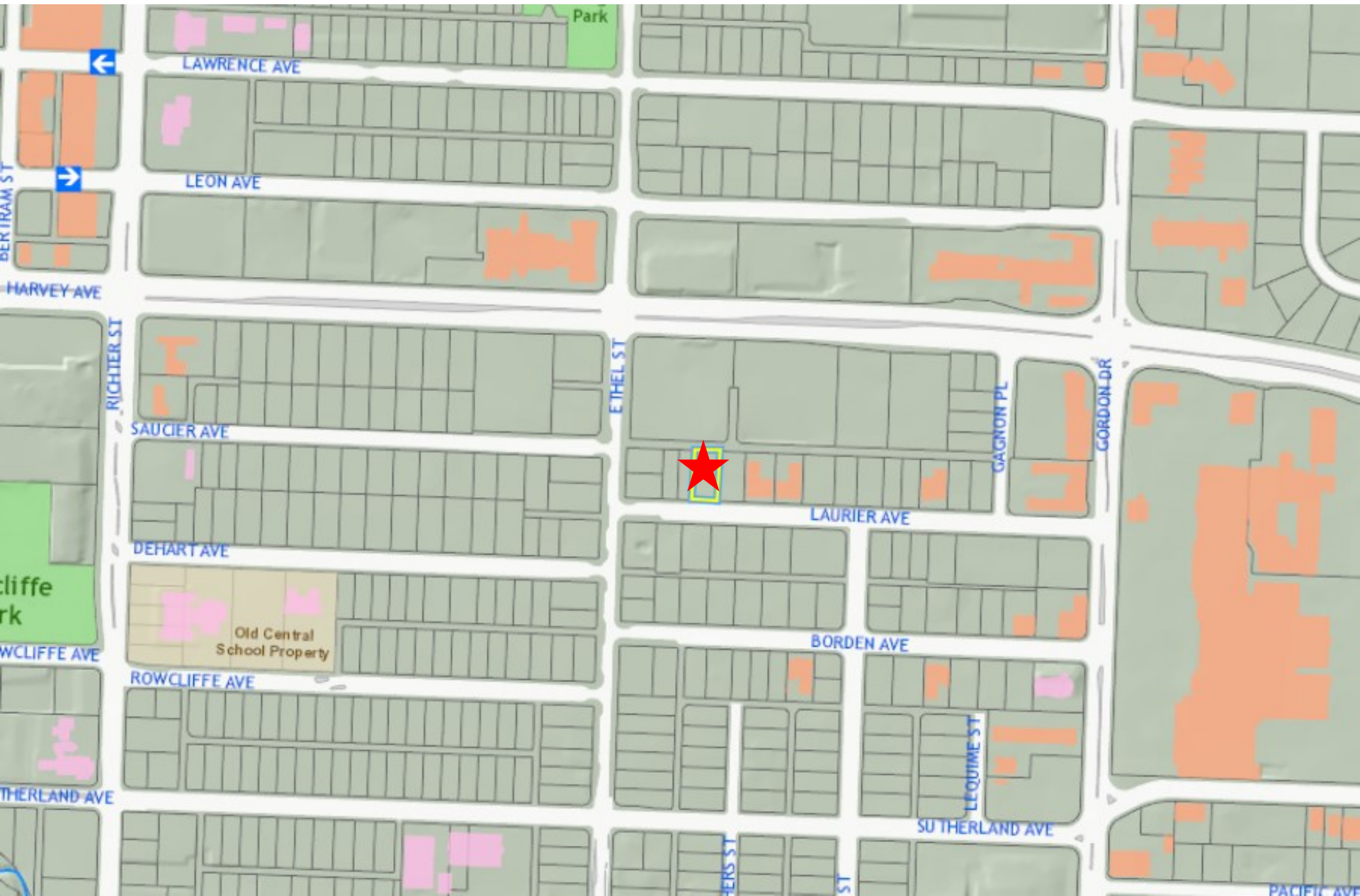
Proposal

- ▶ To consider the form and character of a multi-family development.

Development Process



Context Map



Subject Property Map



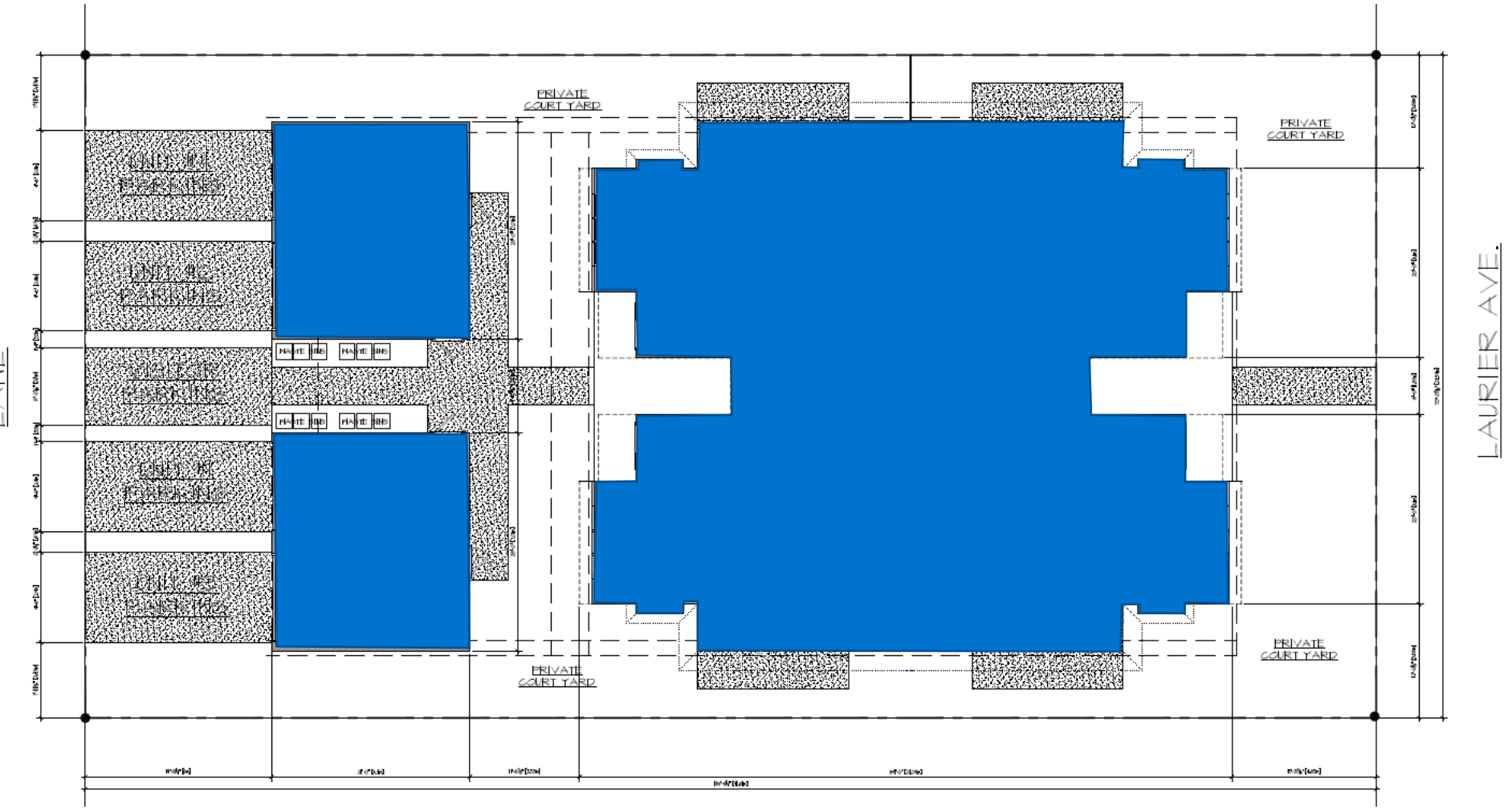
Project/technical details

- ▶ 4 three-bedroom units
- ▶ Central breezeway access to all units
- ▶ 2 tandem parking stalls per unit + visitor parking stall
 - ▶ 1 in garage and 1 surface stall
- ▶ High-quality landscaping with generously sized patios
 - ▶ Fronting units include 2 garden plots each

Z A



Site Plan



Elevations



FRONT ELEVATIONS



LEFT & RIGHT ELEVATIONS

Renderings



Laurier Ave. street view

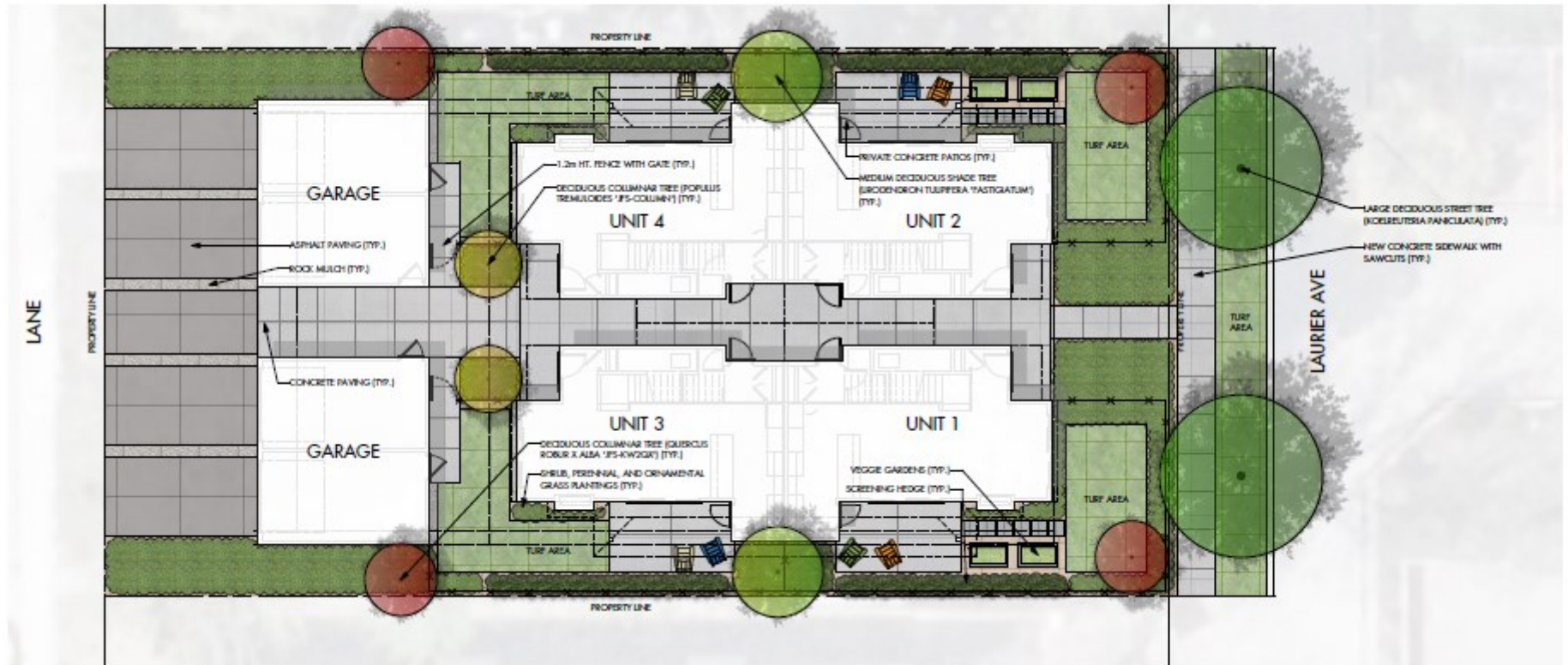
City of Kelowna

Renderings



City of Kelowna

Landscape Plan



Development Policy

▶ Chapter 5: Development Process

▶ Sensitive Infill Housing

- ▶ Development to reflect the form and character of existing neighbourhood

▶ Ground Oriented Housing

- ▶ Encourage multi-family developments to have a front doors facing the street and be 2 bedrooms or more

Staff Recommendation

- ▶ Staff recommend **support** of the Development Permit
 - ▶ Meets zoning requirements
 - ▶ Consistent with OCP Comprehensive Design Guidelines



Conclusion of Staff Remarks

Site Plan

