

CITY OF KELOWNA

BYLAW NO. 11928

Official Community Plan Amendment No. OCP19-0005 Multiple Addresses

A bylaw to amend the "*Kelowna 2030* – Official Community Plan Bylaw No. 10500".

The Municipal Council of the City of Kelowna, in open meeting assembled, enacts as follows:

1. THAT Map 4.1 - **GENERALIZED FUTURE LAND USE** of "*Kelowna 2030* – Official Community Plan Bylaw No. 10500" be amended by changing the Generalized Future Land Use designation of:
 - a) Portion of LOT 1 SECTION 8 TOWNSHIP 23 OSOYOOS DIVISION YALE DISTRICT PLAN EPP77782 located at Clifton Road North from the S2RESH – Single/Two Unit Residential Hillside designation to the S2RES – Single/Two Unit Residential designation as shown on Map "A" attached to and forming part of this bylaw;
 - b) Portion of LOT 14 SECTION 9 TOWNSHIP 23 OSOYOOS DIVISION YALE DISTRICT PLAN KAP81912 located at Long Ridge Drive, Kelowna, BC from the S2RES – Single-Two Unit Residential designation to the PARK – Major Park/Open Space designation as shown on Map "B" attached to and forming part of this bylaw;
 - c) LOT 12 SECTION 24 TOWNSHIP 26 OSOYOOS DIVISION YALE DISTRICT PLAN EPP78252 located at Loseth Drive, Kelowna, BC from the S2RES – Single/Two Unit Residential designation to the S2RESH – Single/Two Unit Residential Hillside designation as shown on Map "C" attached to and forming part of this bylaw;
 - d) LOT 13 SECTION 24 TOWNSHIP 26 OSOYOOS DIVISION YALE DISTRICT PLAN EPP78252 located at Loseth Drive, Kelowna, BC from the S2RES – Single/Two Unit Residential designation to the S2RESH – Single/Two Unit Residential Hillside designation as shown on Map "C" attached to and forming part of this bylaw;
 - e) LOT 14 SECTION 24 TOWNSHIP 26 OSOYOOS DIVISION YALE DISTRICT PLAN EPP78252 located at Loseth Drive, Kelowna, BC from the S2RES – Single/Two Unit Residential designation to the S2RESH – Single/Two Unit Residential Hillside designation as shown on Map "C" attached to and forming part of this bylaw;
 - f) Portion of LOT 15 SECTION 24 TOWNSHIP 26 OSOYOOS DIVISION YALE DISTRICT PLAN EPP78252 located at Loseth Drive, Kelowna, BC from the S2RES – Single/Two Unit Residential designation to the S2RESH – Single/Two Unit Residential Hillside designation as shown on Map "C" attached to and forming part of this bylaw;
 - g) Portion of LOT 16 SECTION 24 TOWNSHIP 26 OSOYOOS DIVISION YALE DISTRICT PLAN EPP78252 located at Loseth Drive, Kelowna, BC from the S2RES – Single/Two Unit Residential designation to the S2RESH – Single/Two Unit Residential Hillside designation as shown on Map "C" attached to and forming part of this bylaw;

- h) Portion of LOT 17 SECTION 24 TOWNSHIP 26 OSOYOOS DIVISION YALE DISTRICT PLAN EPP78252 located at Loseth Drive, Kelowna, BC from the S2RES – Single/Two Unit Residential designation to the S2RESH – Single/Two Unit Residential Hillside designation as shown on Map “C” attached to and forming part of this bylaw;
- i) Portion of LOT 18 SECTION 24 TOWNSHIP 26 OSOYOOS DIVISION YALE DISTRICT PLAN EPP78252 located at Loseth Drive, Kelowna, BC from the S2RES – Single/Two Unit Residential designation to the S2RESH – Single/Two Unit Residential Hillside designation as shown on Map “C” attached to and forming part of this bylaw;
- j) Portion of LOT 3 SECTION 29 TOWNSHIP 29 SIMILKAMEEN DIVISION YALE DISTRICT PLAN EPP94737 located at Twinflower Crescent, Kelowna, BC from the PARK – Major Park/Open Space designation to the S2RESH – Single/Two Unit Residential Hillside designation as shown on Map “D” attached to and forming part of this bylaw;

2. This bylaw shall come into full force and effect and is binding on all persons as and from the date of adoption.

Read a first time by the Municipal Council this 25th day of January, 2021.

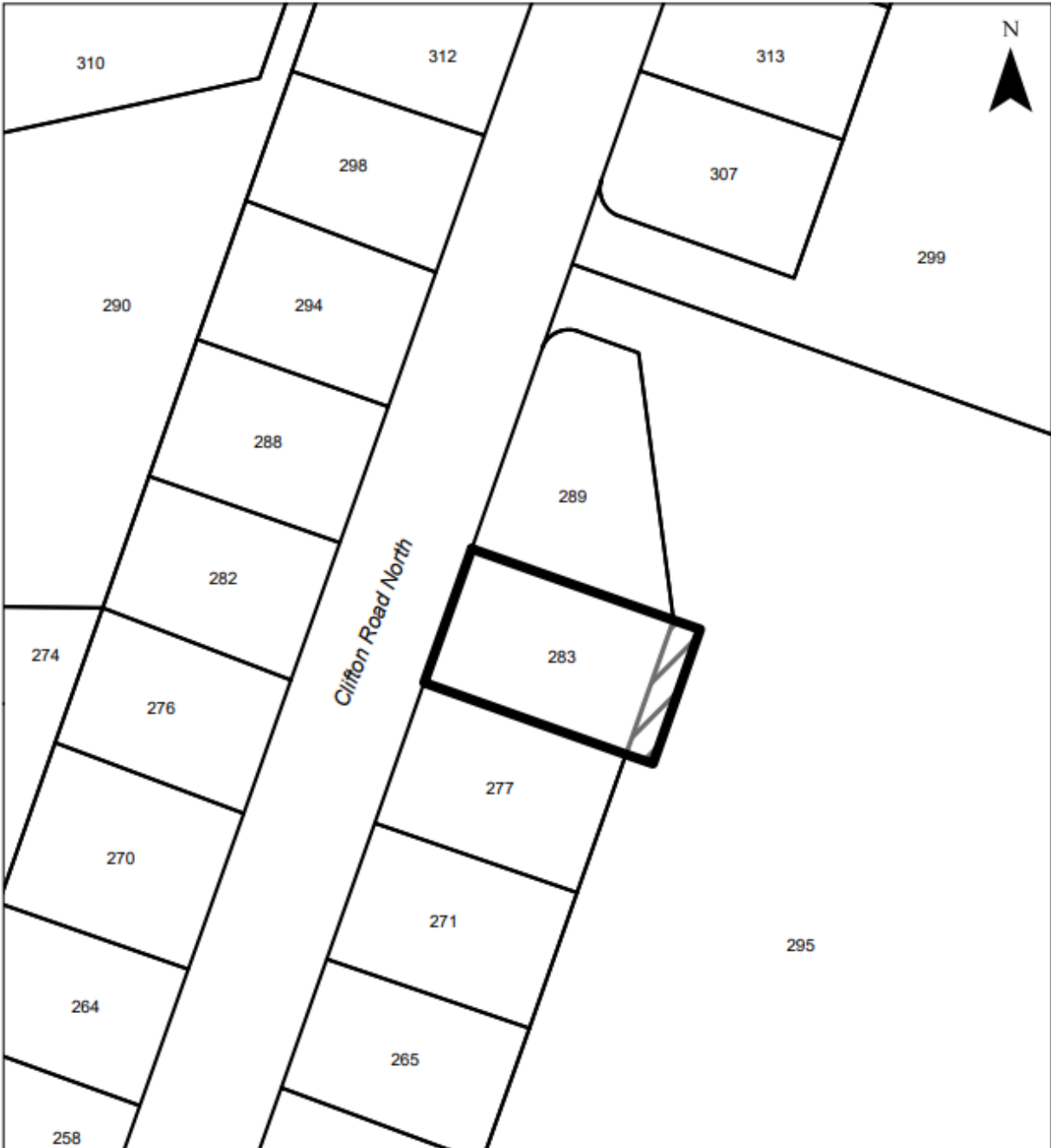
Considered at a Public Hearing on the

Read a second and third time by the Municipal Council this

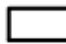

Adopted by the Municipal Council of the City of Kelowna this

Mayor

City Clerk



MAP "A" OCP AMENDMENT
File: OCP19-0005

-  Subject Property
-  S2RESH -Single / Two Unit Residential - Hillside to S2RES - Single / Two Unit Residential

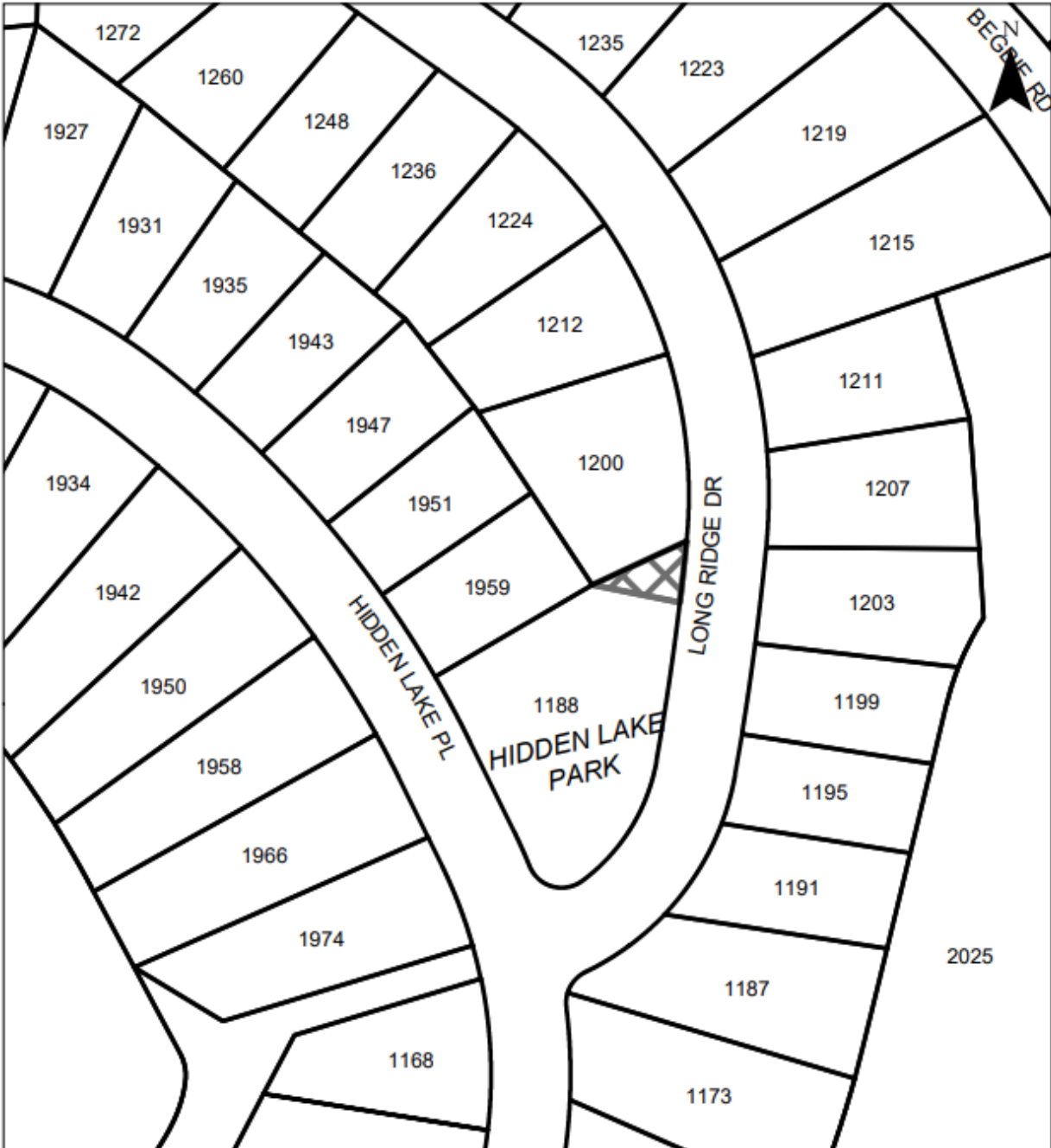
This map is for general information only.
 The City of Kelowna does not guarantee its accuracy. All information should be verified.



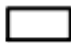

Rev. 11/12/2020



AC



MAP "B" OCP AMENDMENT
File: OCP19-0005

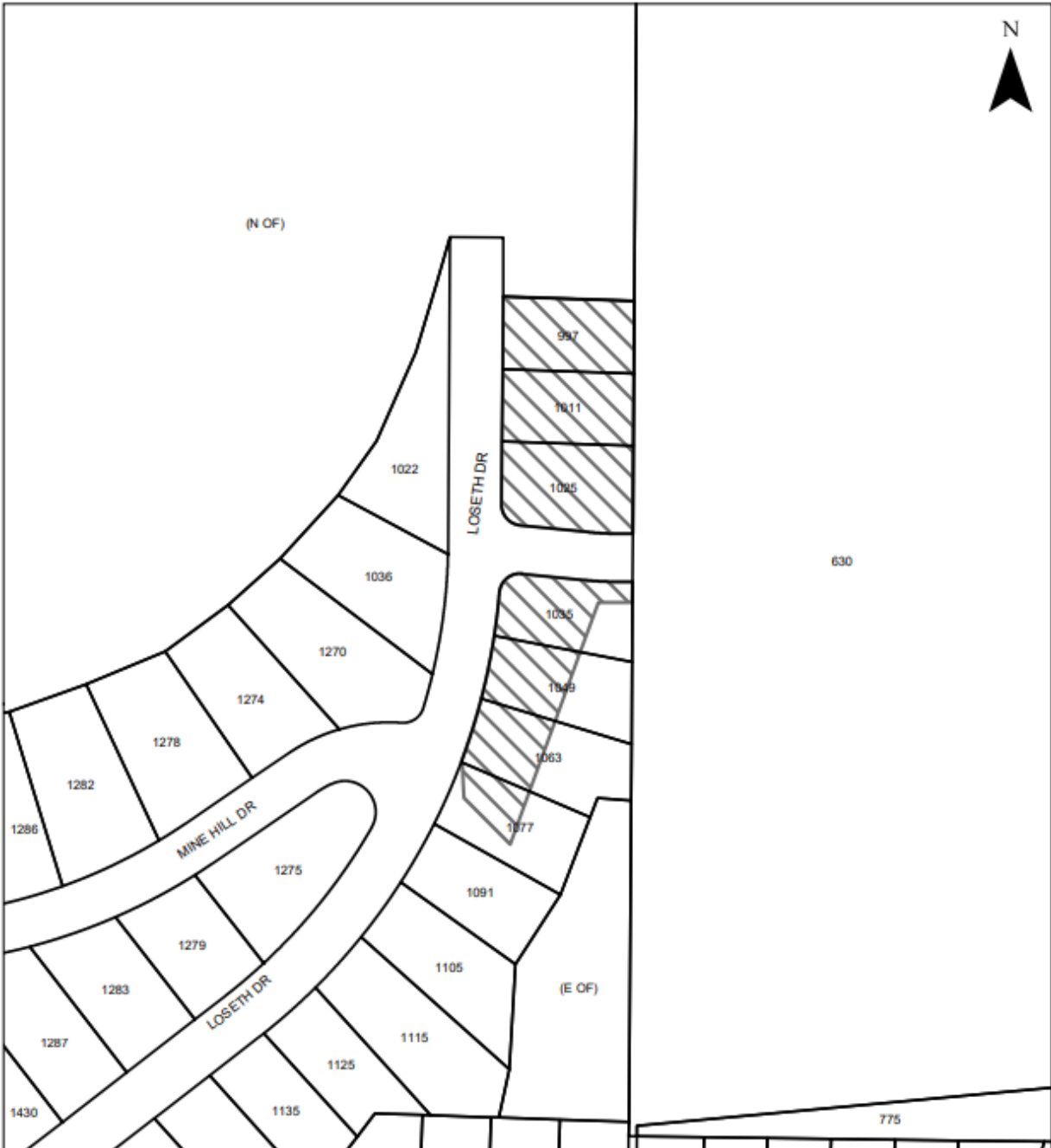
-  Subject Property
-  S2RES - Single / Two Unit Residential to PARK - Major Park/Open Space

This map is for general information only.
The City of Kelowna does not guarantee its accuracy. All information should be verified.

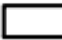



Rev. 9/21/2020

KB



MAP "C" OCP AMENDMENT
File: OCP19-0005

-  Subject Property
-  S2RES - Single / Two Unit Residential to S2RESH - Single / Two Unit Residential Hillside

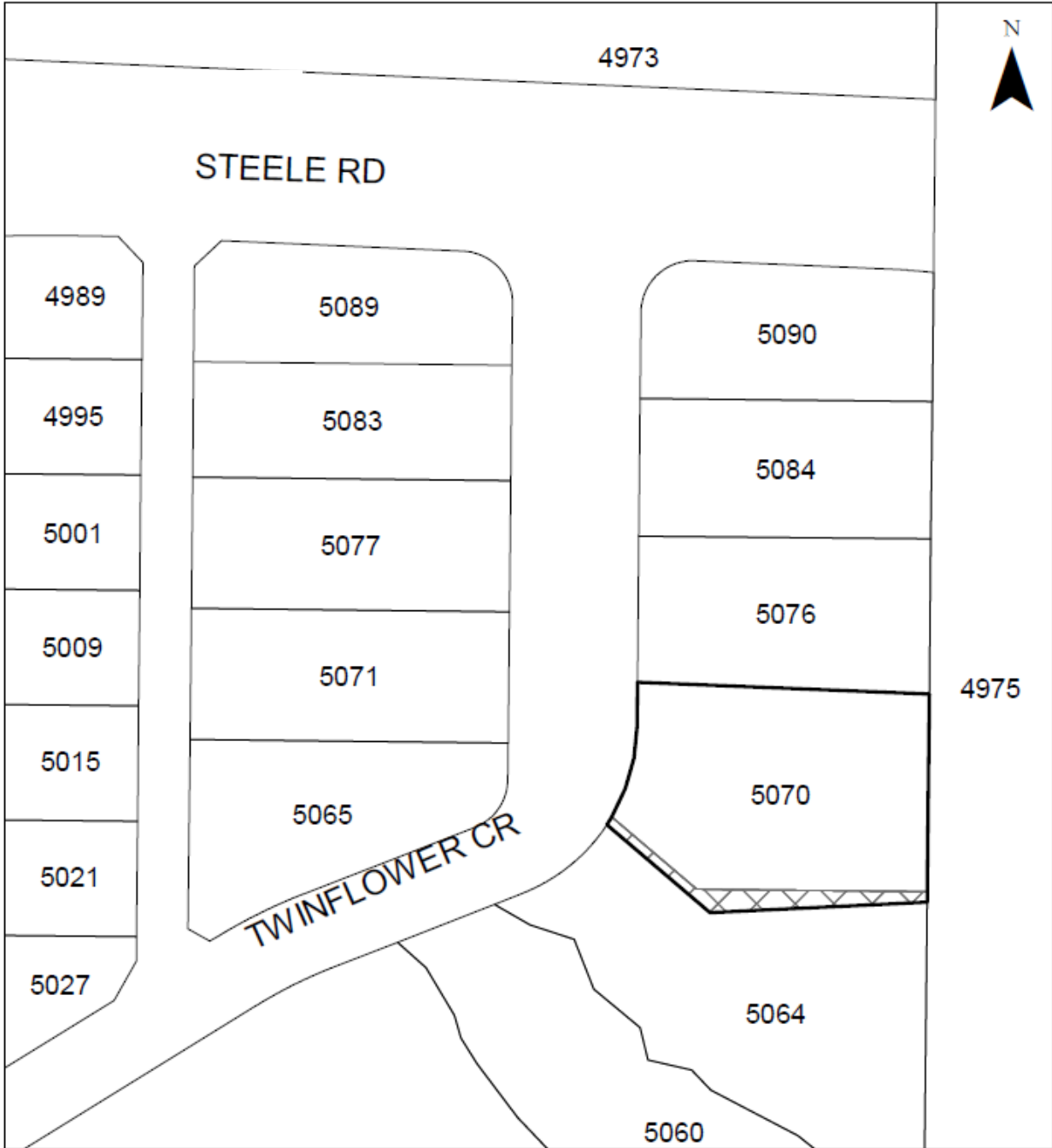
This map is for general information only. The City of Kelowna does not guarantee its accuracy. All information should be verified.



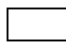

0 20 40 Metres

Rev. 11/12/2020

KB



MAP "D" OCP AMENDMENT
File: OCP19-0005

-  Subject Property
-  PARK - Major Park / Open Space to S2RESH - Single / Two Unit Residential - Hillside

This map is for general information only. The City of Kelowna does not guarantee its accuracy. All information should be verified.



Rev. 11/12/2020