



Z19-0107 OCP19-0005 Various Addresses

OCP Amendment & Rezoning Amendment



Proposal

- ▶ To consider an application to amend the Official Community Plan (OCP) to change the future land use designations and to rezone the subject properties to correct various site-specific mapping discrepancies.

Development Process

July 31, 2019

Development Application File Created



Staff Review & Circulation



Jan 25, 2021

Initial Consideration



Public Hearing
Second & Third Readings



Final Reading

Council
Approvals

Project Details

- ▶ Site-Specific Mapping Amendments
- ▶ Align future land use designation & zoning boundaries with existing or proposed future lot lines
- ▶ Correct bylaw amendments from previous applications

Staff Recommendation

- ▶ Staff recommend **support** of the proposed OCP amendments & rezoning
 - ▶ Align future land use designations & zoning boundaries with lot lines
 - ▶ Reduces uncertainty regarding how properties can develop



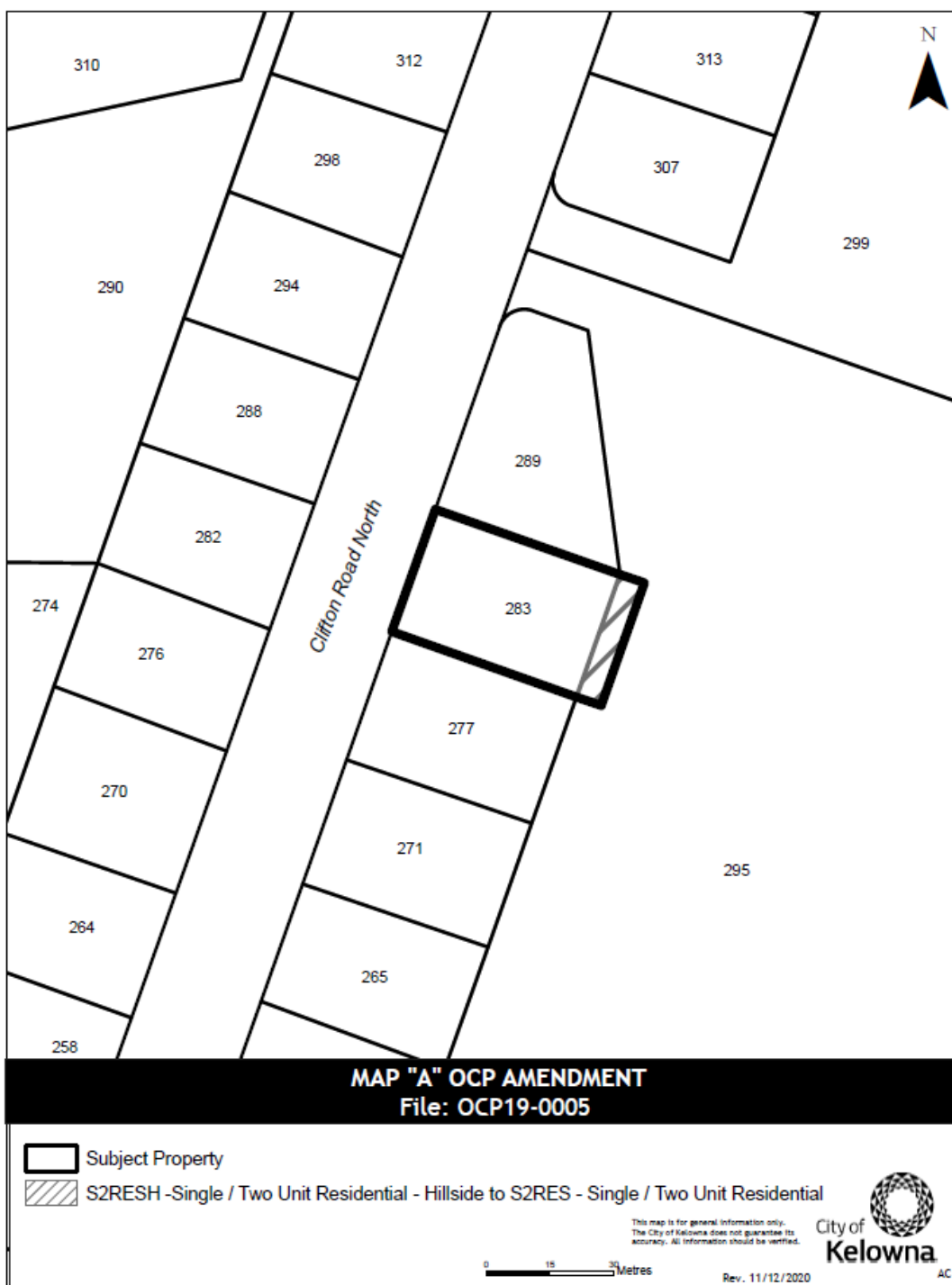
Conclusion of Staff Remarks

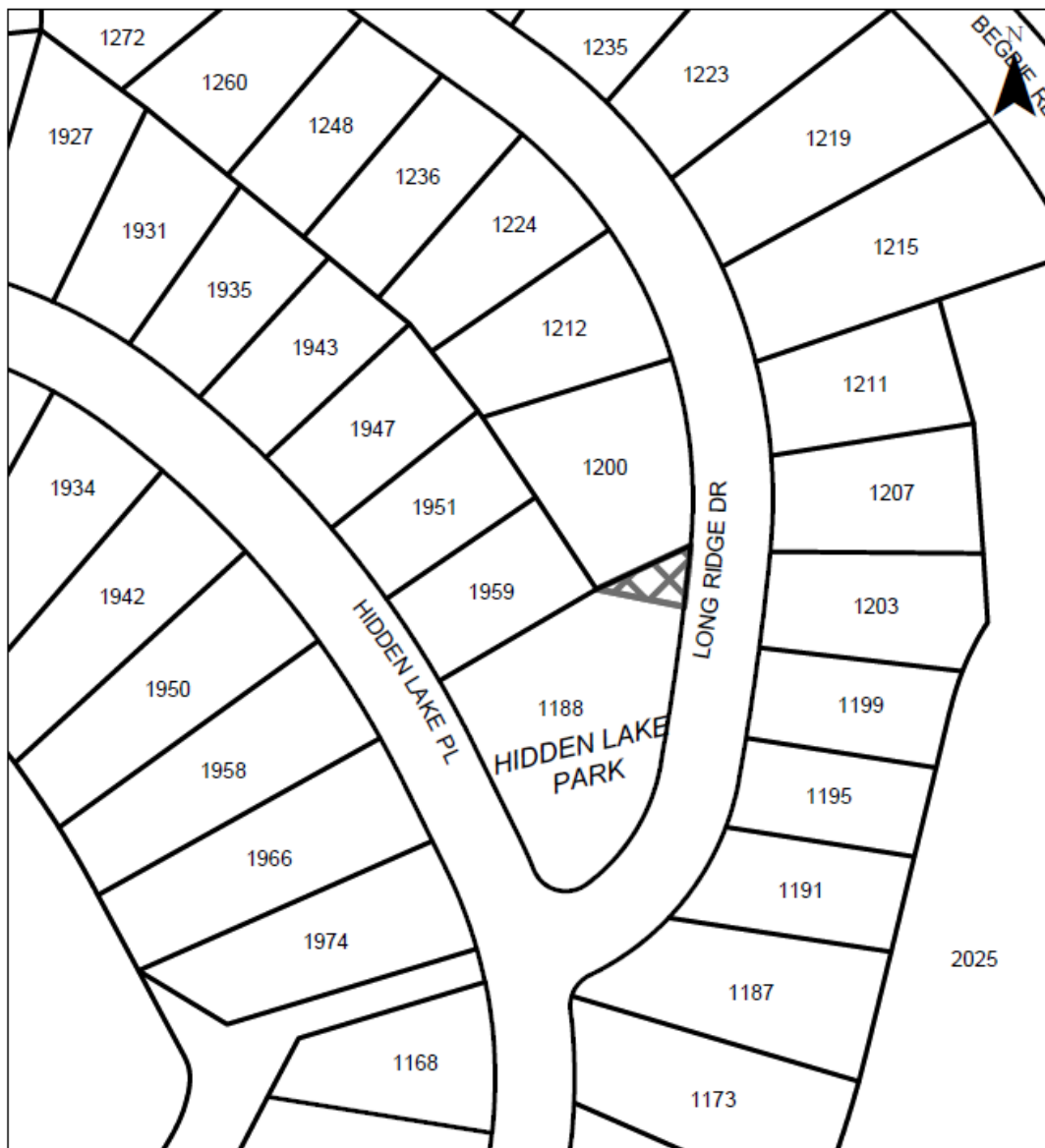
Neighbourhood:

- North Clifton



Amendment:

- S2RESH to S2RES





MAP "B" OCP AMENDMENT
File: OCP19-0005

-  Subject Property
-  S2RES - Single / Two Unit Residential to PARK - Major Park/Open Space

0 10 20 Metres

Rev. 9/21/2020

This map is for general information only.
The City of Kelowna does not guarantee its
accuracy. All information should be verified.



KB

Neighbourhood:

- Wilden

Amendment:

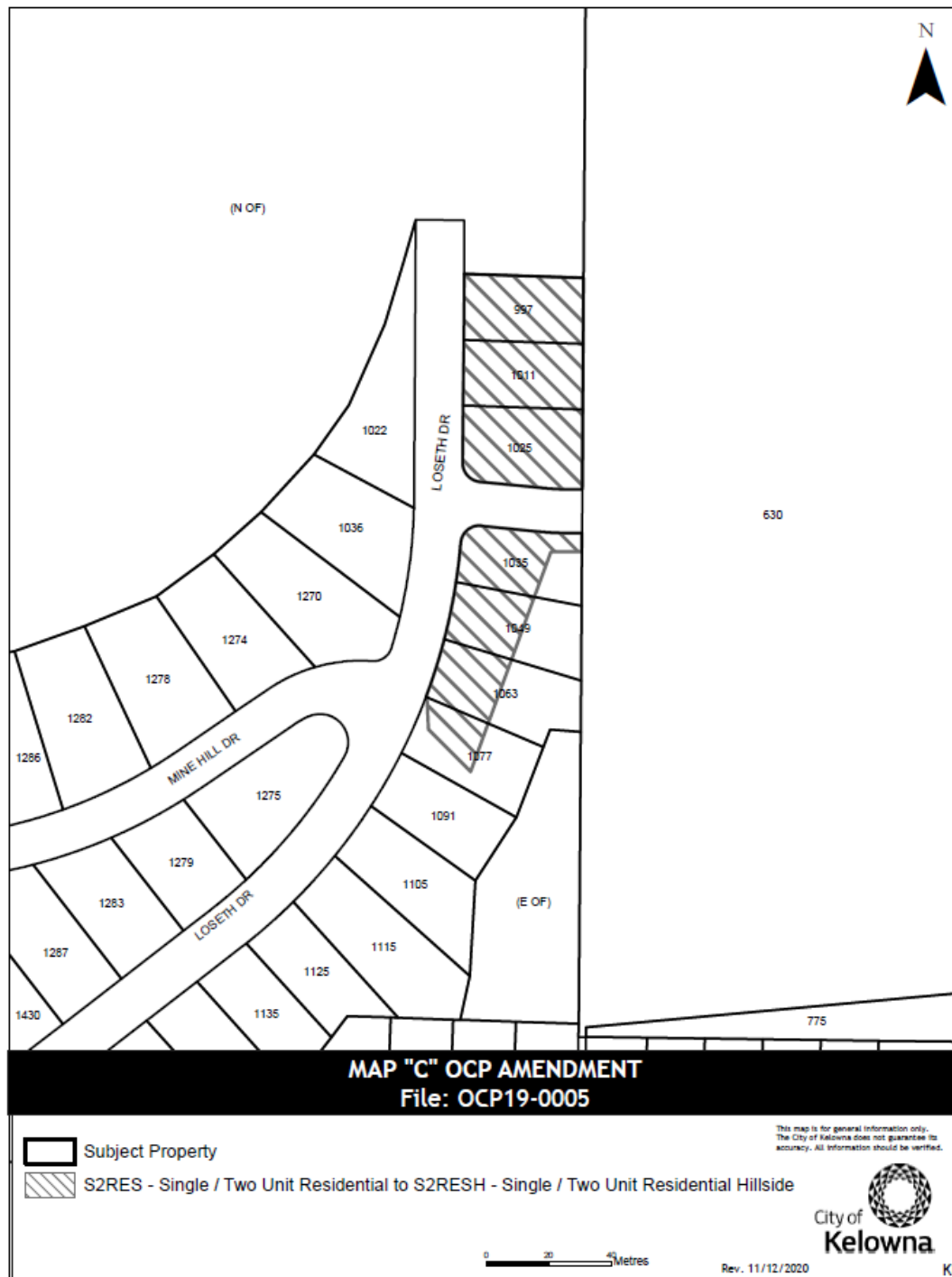
- S2RES to PARK

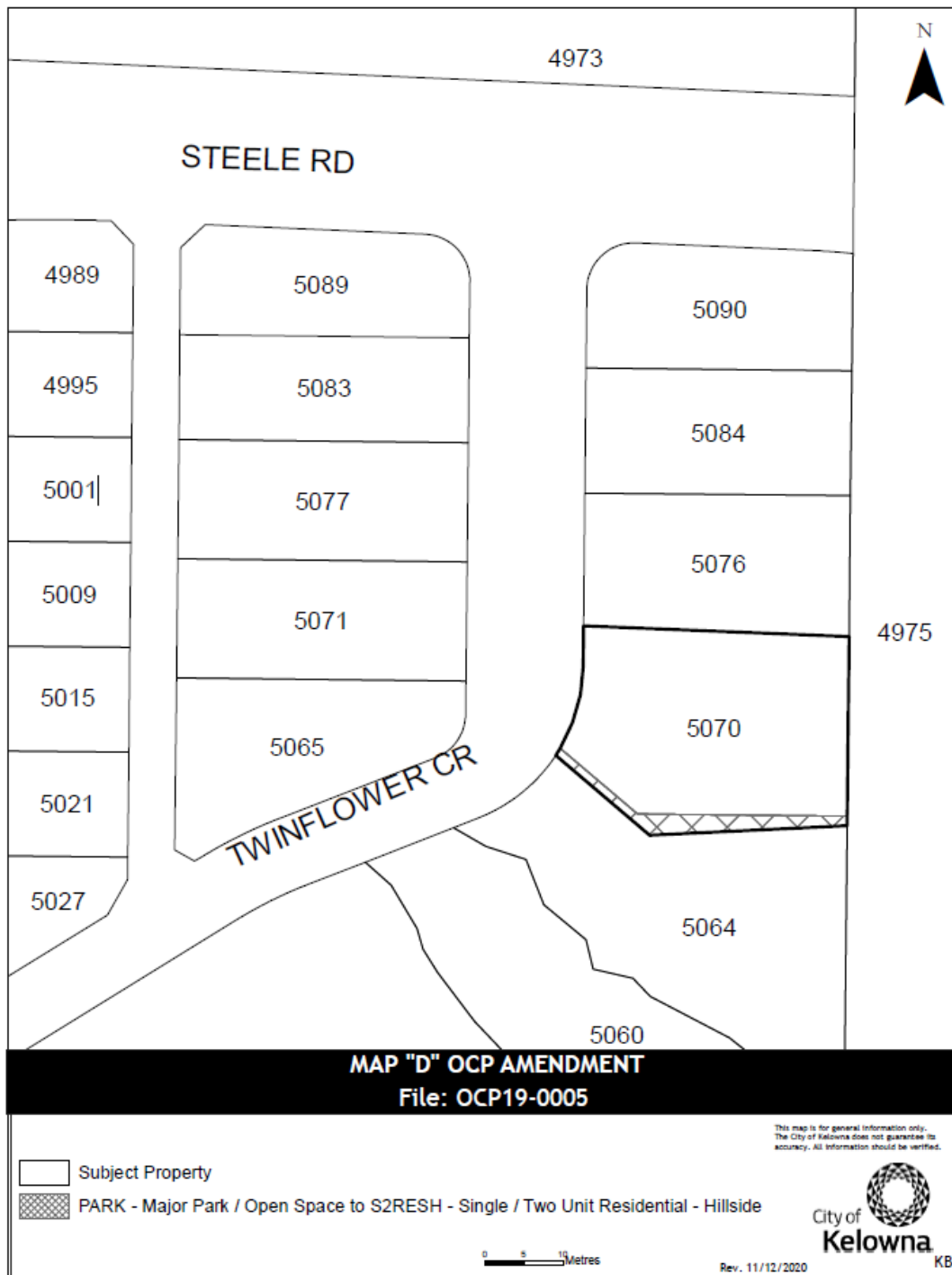
Neighbourhood:

- Black Mountain

Amendment:

- S2RES to
S2RESH



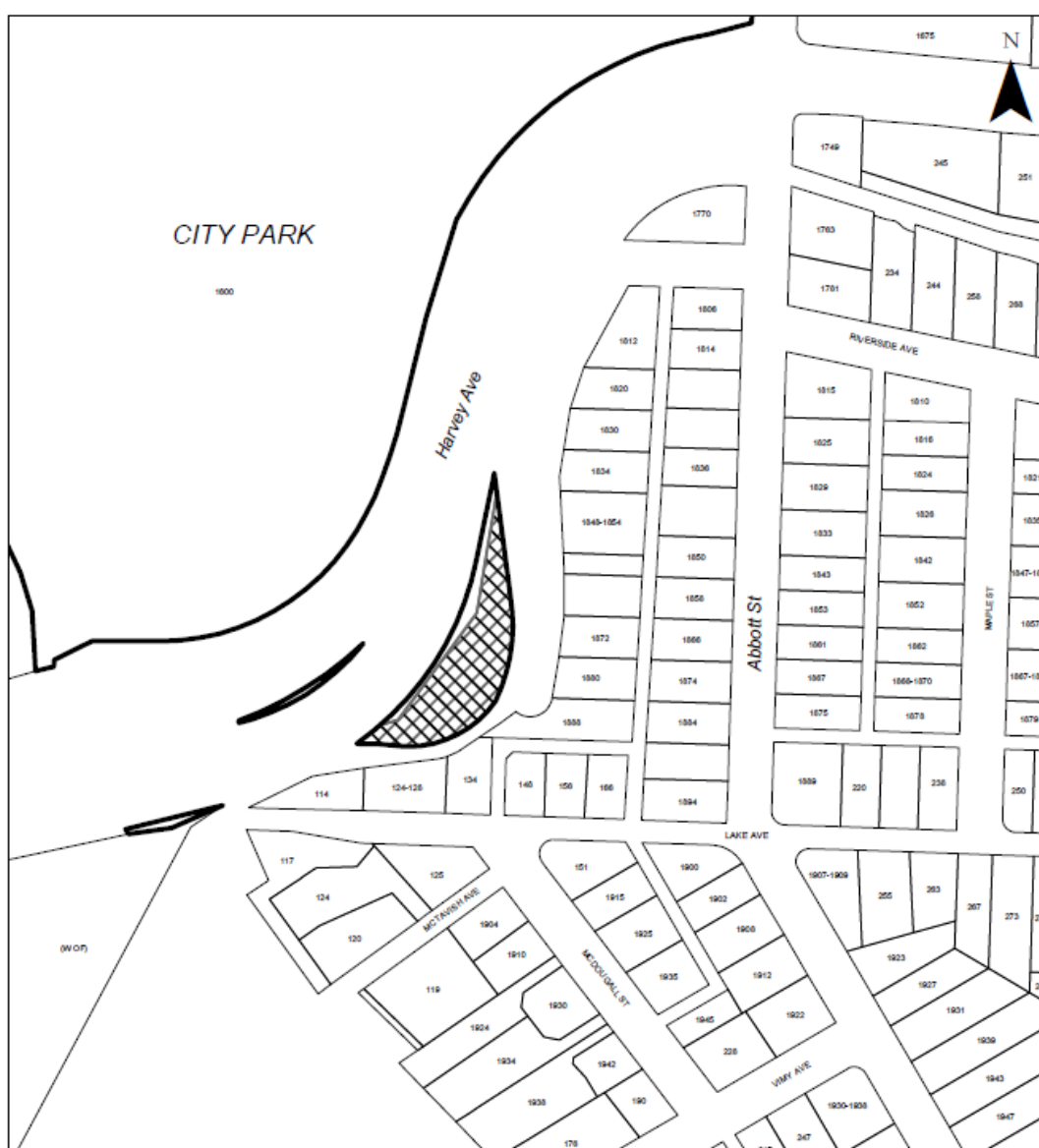


Neighbourhood:

- Upper Mission

Amendment:

- PARK to S2RESH



MAP "E" PROPOSED ZONING
File: Z19-0107

Neighbourhood:

- City Park

Amendment:

- RU₁ to P₃



Subject Property



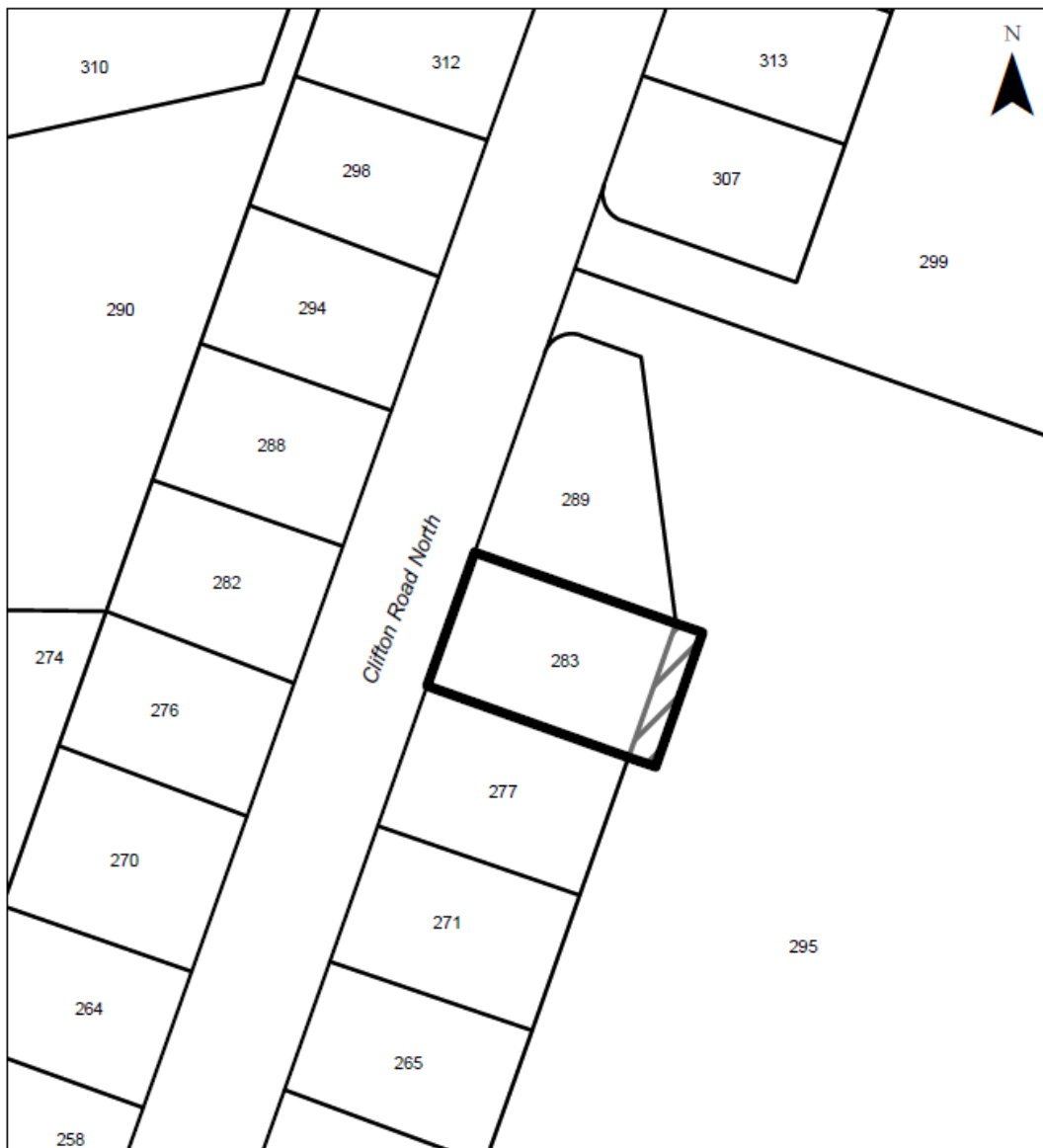
RU1 - Large Lot Housing to P3 - Parks and Open Space

This map is for general information only.
The City of Kelowna does not guarantee its
accuracy. All information should be verified.



Rev. 9/17/2020

KB





Neighbourhood:

- North Clifton

Amendment:

- A1 to RR₃

MAP "F" PROPOSED ZONING
File: Z19-0107

-  Subject Property
-  A1 - Agriculture to RR₃ - Rural Residential 3

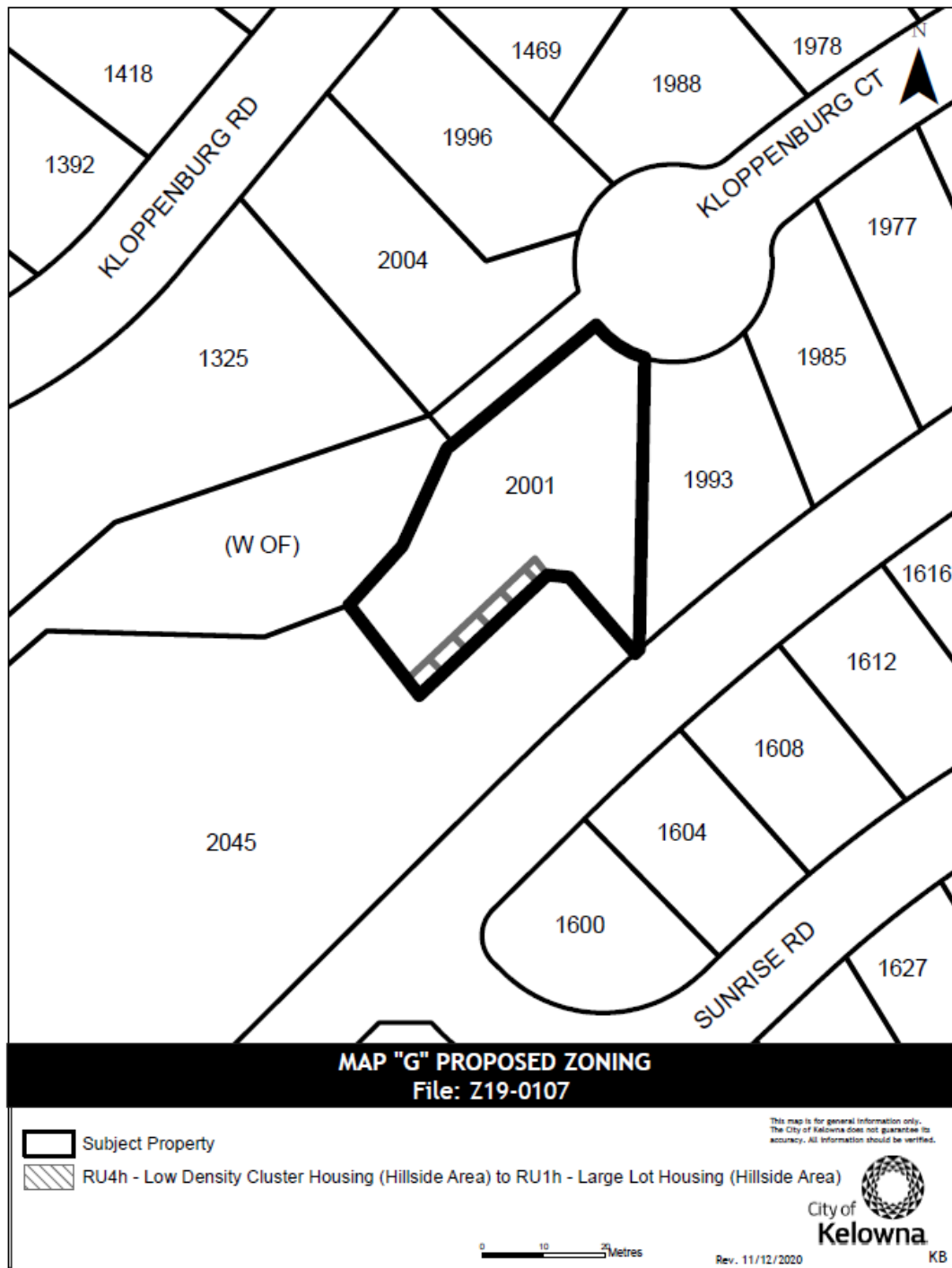
This map is for general information only.
The City of Kelowna does not guarantee its
accuracy. All information should be verified.

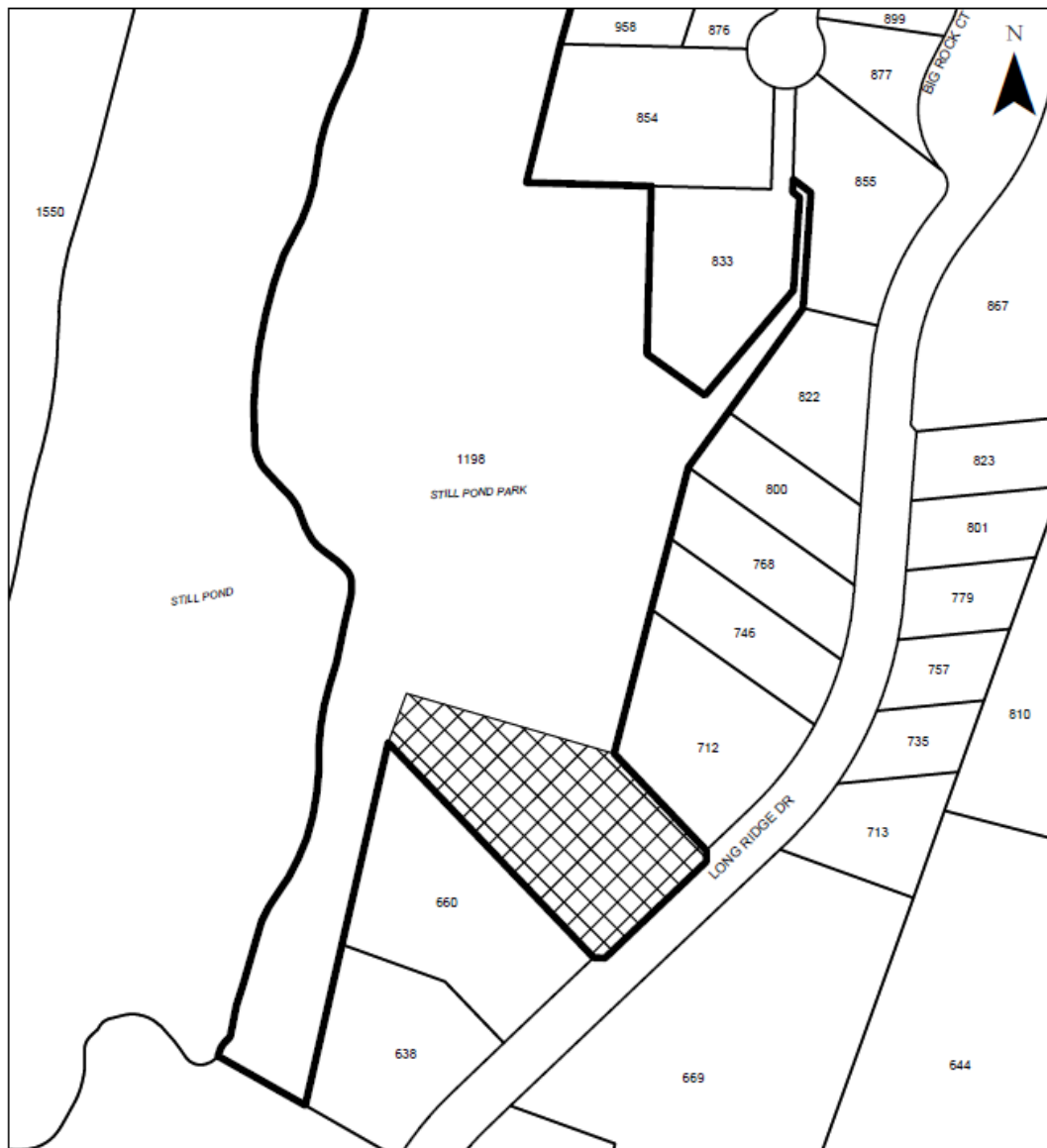
0 15 30 Metres

Rev. 11/10/2020



KB





MAP "H" Proposed Zoning
File: Z19-0107

-  Subject Property
-  RU1h - Large Lot Housing (Hillside Area) to P3 - Parks and Open Space

This map is for general information only.
The City of Kelowna does not guarantee its
accuracy. All information should be verified.



0 20 40 Metres

Rev. 11/12/2020

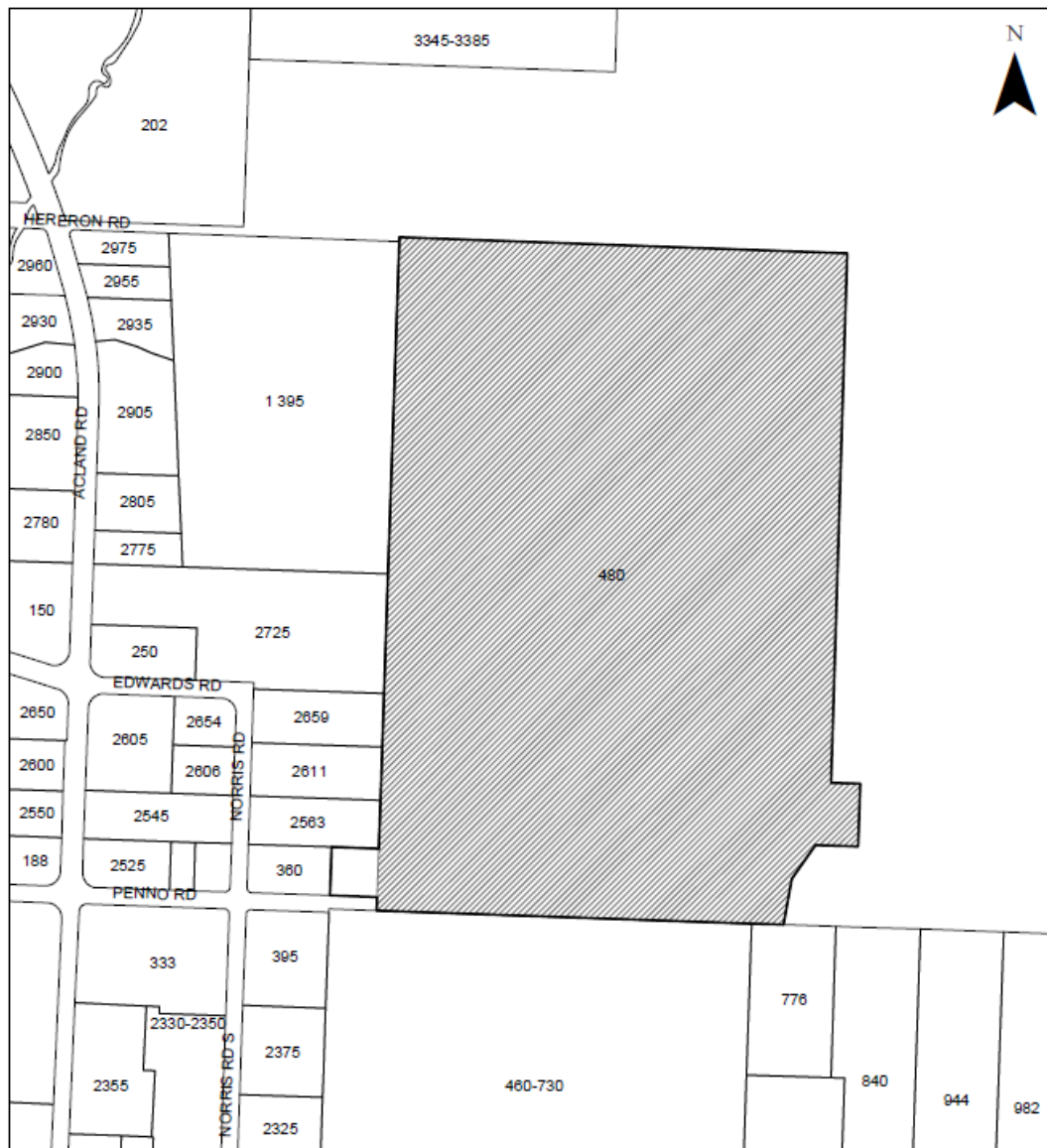
KB

Neighbourhood:



- Wilden

Amendment:

- RU_{1h} to P₃



MAP "I" PROPOSED ZONING
File: Z19-0107

-  Subject Property
-  to P3 - Parks and Open Space

This map is for general information only.
The City of Kelowna does not guarantee its
accuracy. All information should be verified.



Rev. 11/12/2020

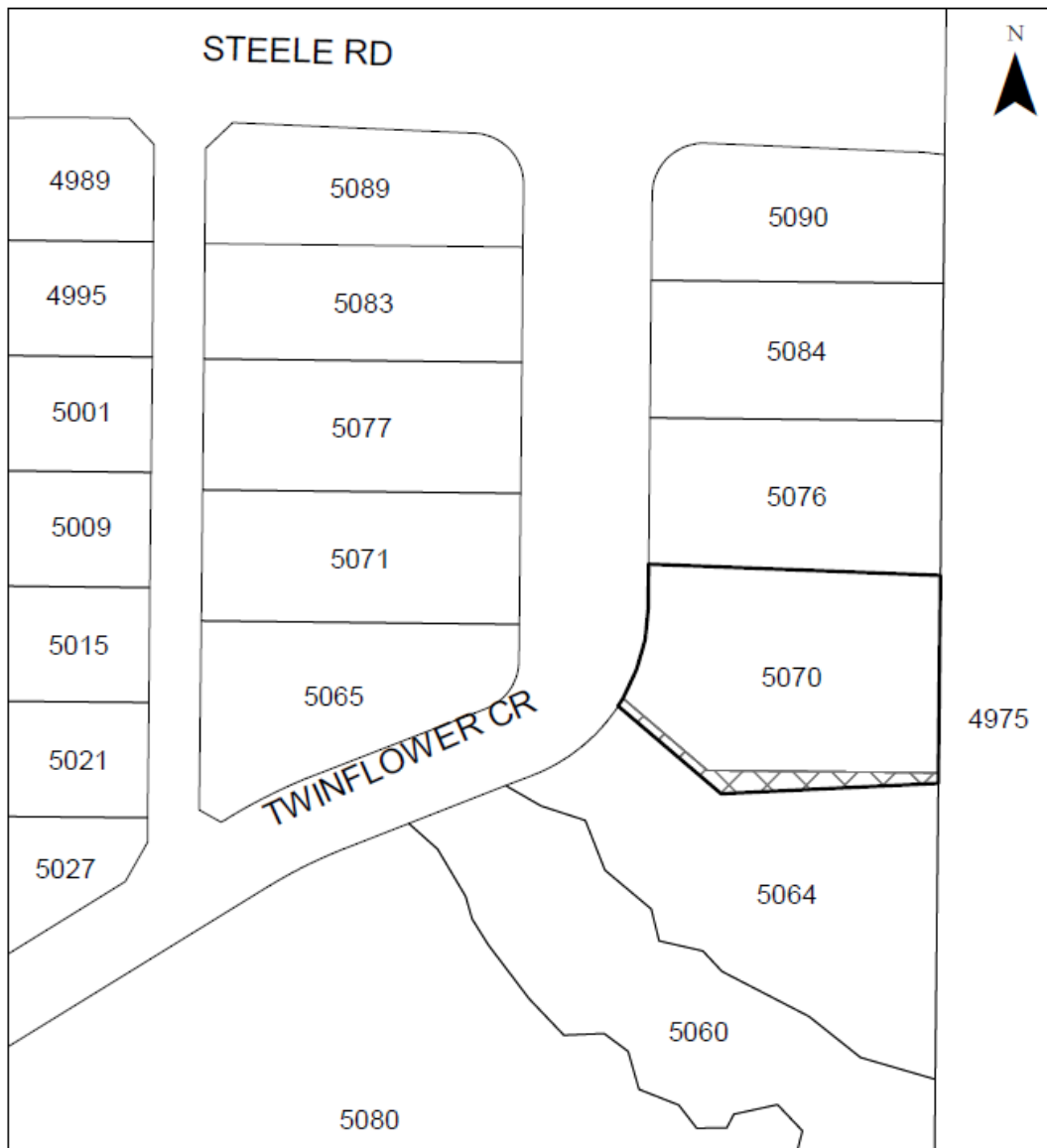
KB

Neighbourhood:



- Sexsmith

Amendment:

- to P₃



MAP "J" PROPOSED ZONING
File:Z19-0107

-  Subject Property
-  P3 - Parks and Open Space to RU2h - Medium Lot Housing (Hillside Area)

This map is for general information only.
The City of Kelowna does not guarantee its
accuracy. All information should be verified.

Neighbourhood:

- Upper Mission

Amendment:

- P₃ to RU_{2h}

Neighbourhood:

- Downtown

Amendment:

- C7 to P3





Neighbourhood:

- Rutland

Amendment:

- RU1 to RU1c