



# Okanagan Lake Second Crossing Project

## Central Okanagan Planning Study

Status Update  
City of Kelowna

August 8, 2016



# Agenda

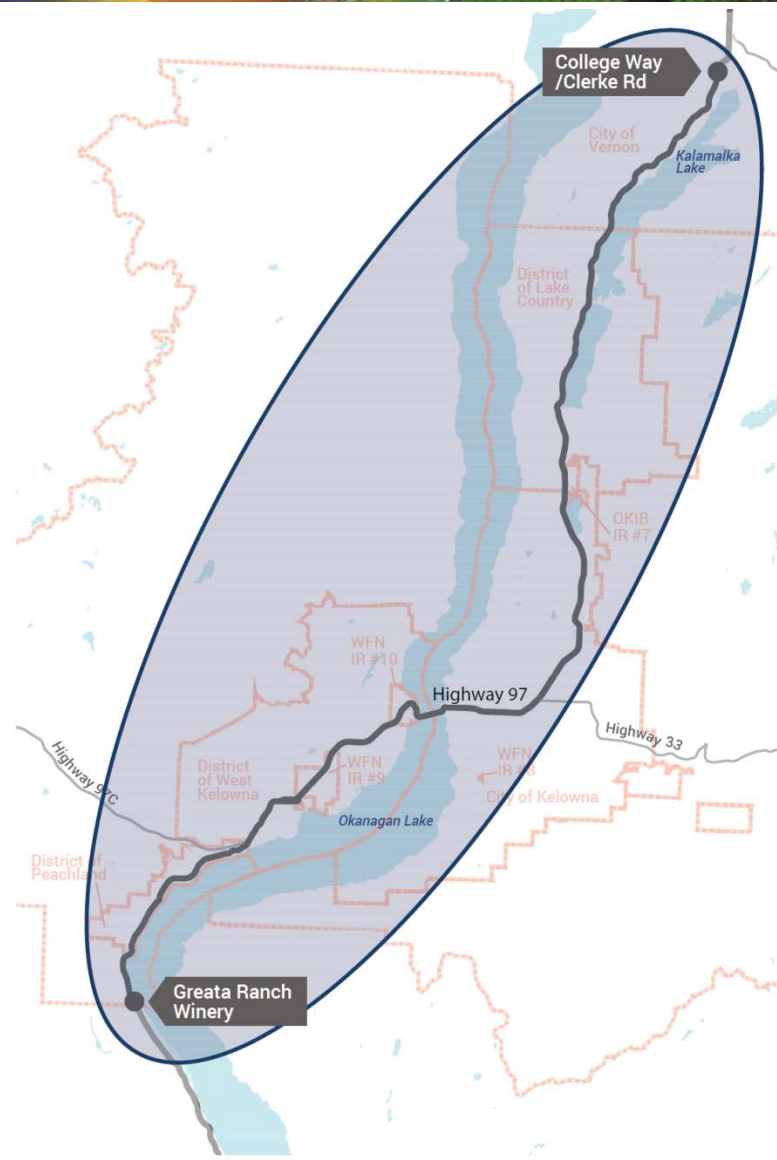
- History / Background
- Study Area
- The Study Process
- Key Findings To Date
- Context for Hwy 97 Options
- Considering the Role of Hwy 97
- Testing Ideas – a Sample
- Current Activity
- Looking Ahead
- Project Schedule



# History / Background

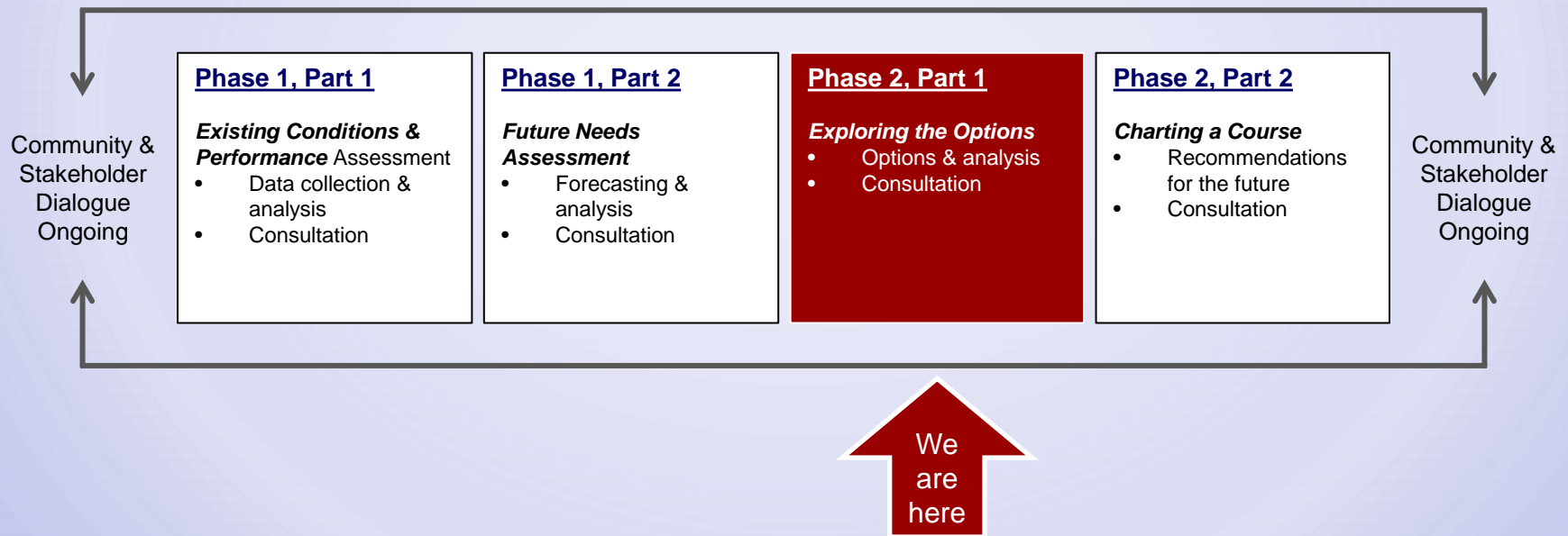
- Study initiated in late 2014 to assess future mobility needs in Central Okanagan
  - Building on previous work to develop potential route proposals considering:
    - Public needs
    - Community land use plans
    - Provincial transportation priorities
  - Include consideration of second crossing
  - Consideration of options in West Kelowna, including alternate route, part of scope
  - Examination of existing corridor & alternate route options for Peachland added in December 2015
  - Extensive stakeholder & public engagement throughout

# Study Area



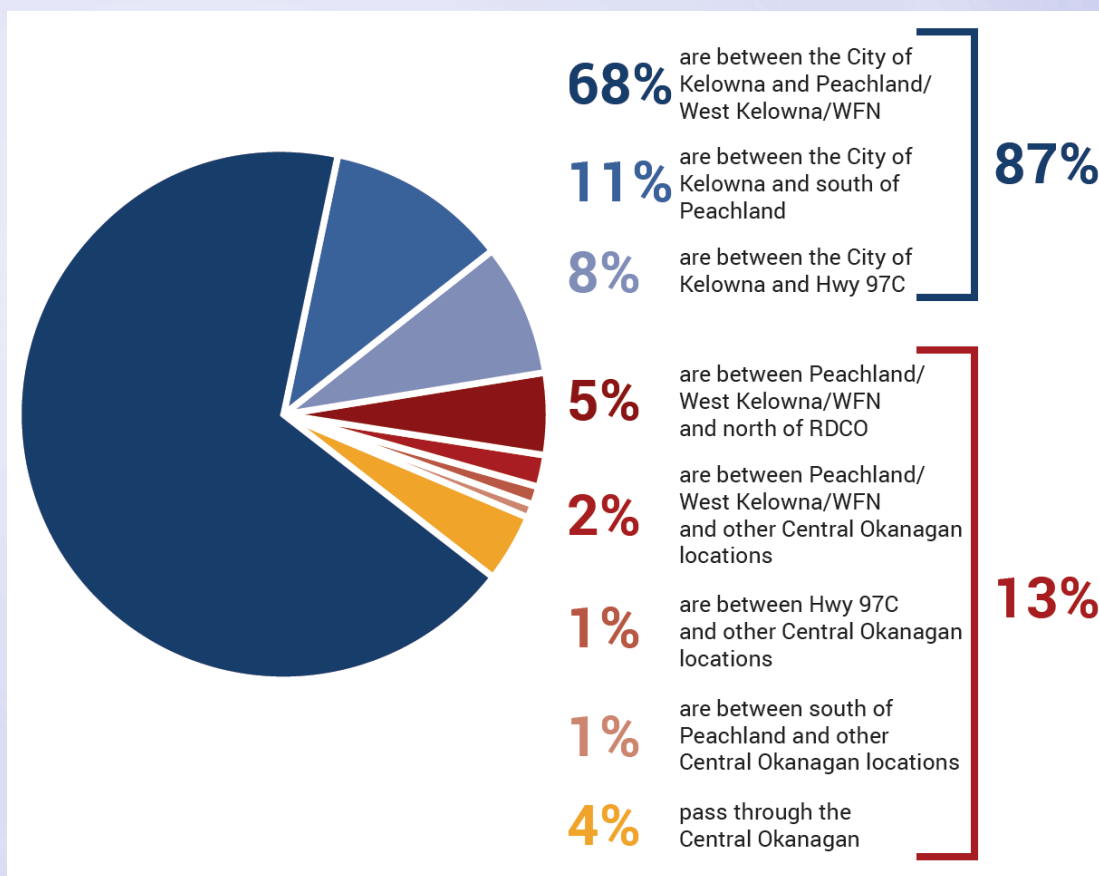


# The Study Process



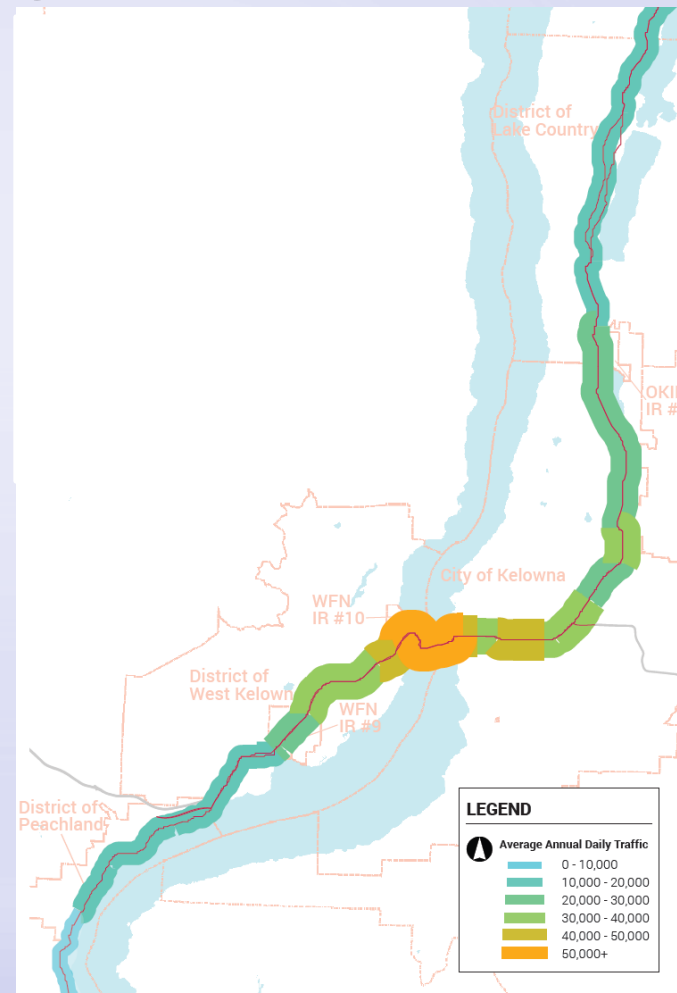
# Key Findings to Date

- 96% of trips on the W.R. Bennett Bridge start or end in the Central Okanagan, up from 85% in 1994
- More than 2/3 of the trips are between Kelowna and Peachland / West Kelowna / Westbank First Nation



# Key Findings to Date

- Traffic *volumes* are highest on the William R. Bennett Bridge.
- The greatest *congestion* lies in the urban portions of the corridor on either side of the bridge, which have less capacity than the bridge itself.
- Findings led to discussion: What is the appropriate future role of Highway 97?





# Context for Hwy 97 Options

## 2011 OVTS Symposium Vision for Okanagan Transportation System

- Be a safe, functional & efficient network
- Include fully accessible public & active transportation options within and between communities
- Be a coordinated approach to multi-modal and sustainable transportation
- Protect & preserve rail & other ROWs [rights of way] for the future
- Plan network improvements, assisting in community revitalization and provision of alternate routes





# Considering the Role of Hwy 97

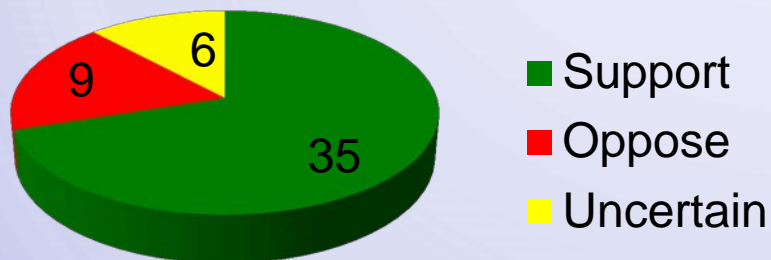
- There is a need to examine the role of the provincial highway
  - What should its characteristics be?
  - Should access points be restricted to allow longer-distance traffic to move unfettered?
  - Should the alignment of the provincial highway be moved?
  - Should the highway bypass the region?
  - What would happen to the existing facility?

... Discussion is ongoing through engagement process

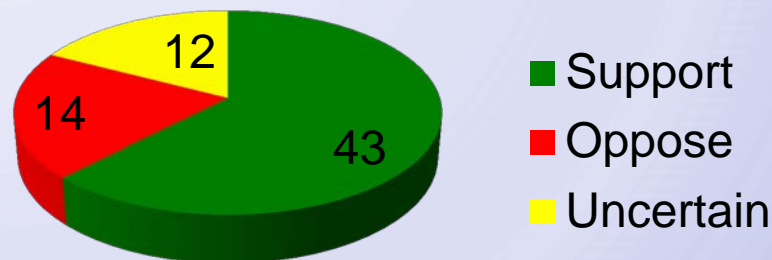
# Testing Ideas – a Sample

Fall 2015 open houses – respondent views on access measures:

**Kelowna**



**West Kelowna**





# Current Activity

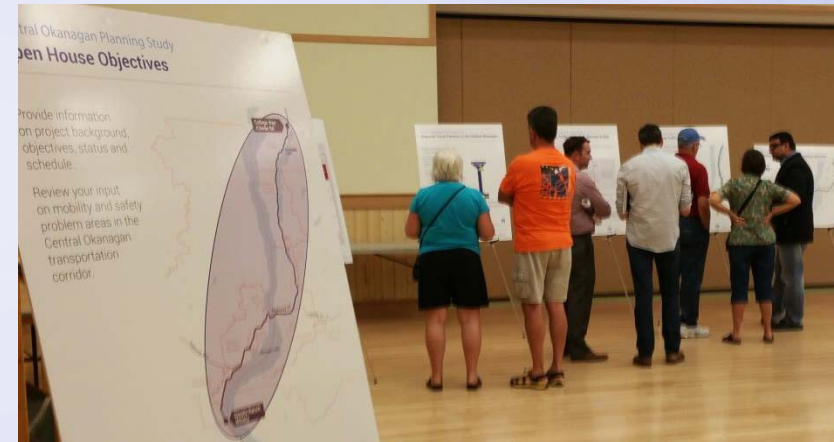
Options generation:

- Measures to improve the efficiency of the existing corridor (access measures)
- Realignment of the highway through/ around communities
- Potential second crossing alignments

...Applying feedback received in engagement to date

# Looking Ahead

- Further engagement with local municipalities & First Nations staff
- Additional engagement with Community Working Group and Technical Advisory Committee
- Periodically touch base with local Councils
- Public open house in fall 2016
- Ultimate deliverable in 2017: short, medium and long term solutions for the corridor with an associated migration strategy



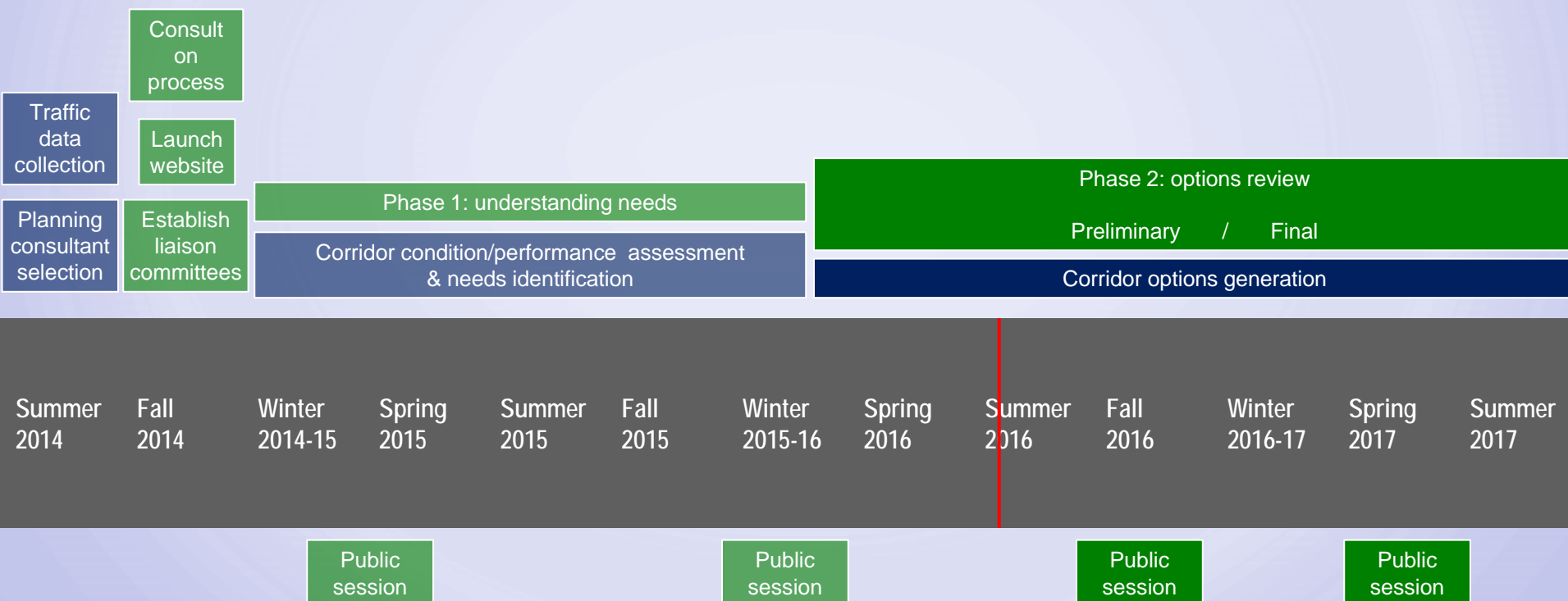


# Project Schedule

## Activities

*Technical*

*Engagement*



## Milestones



BRITISH  
COLUMBIA

---