



Our Kelowna as we Grow 2040

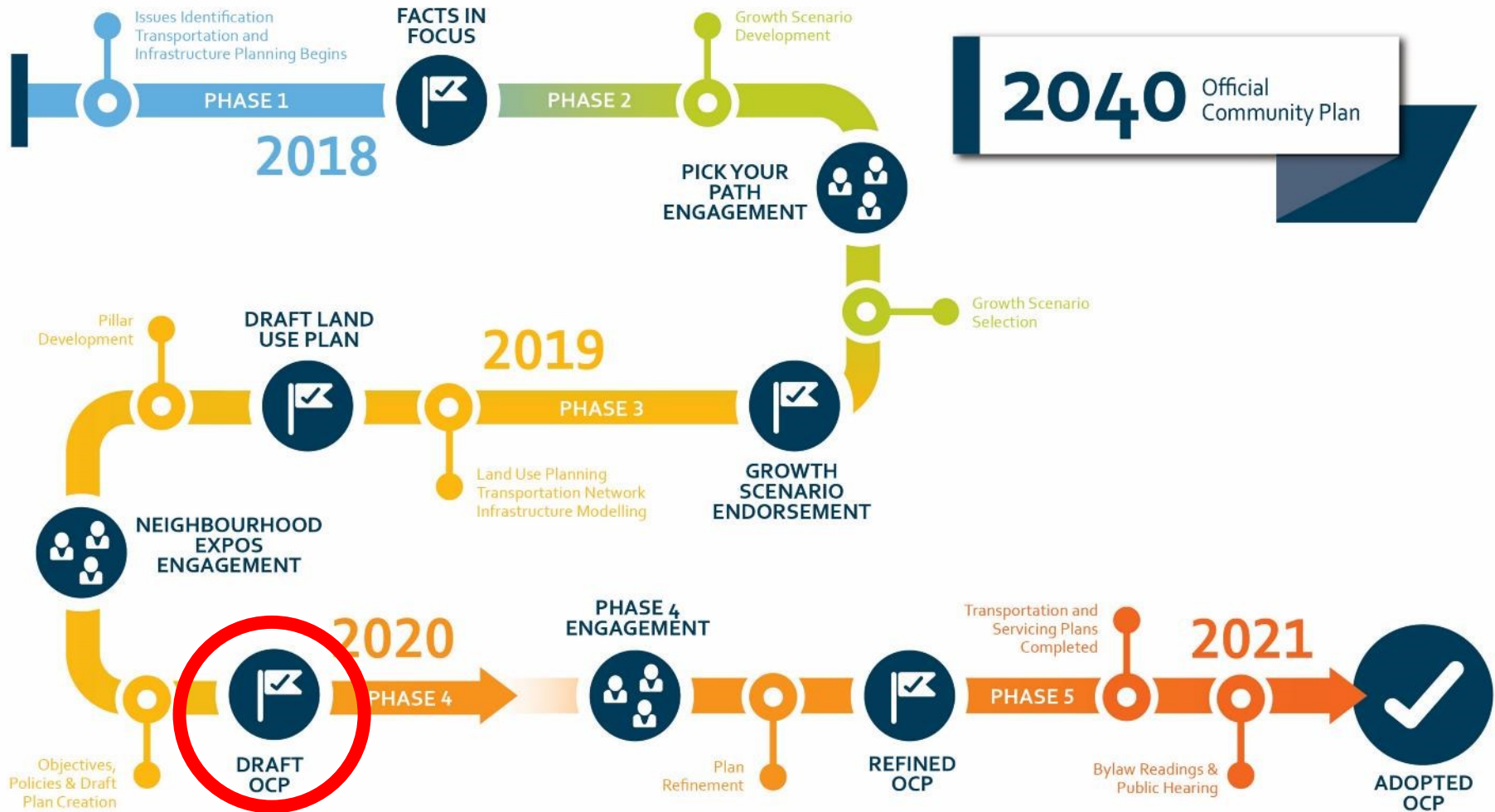




Purpose

- The Gateway
- Suburban Neighbourhoods and Rural Lands
 - Parks

OCP 2040 Process



Draft OCP Launch Schedule



December 7, 2020 (Morning):
Gateway, Suburban, Rural Districts
Parks

January 2021 (Afternoon):
Draft Plan Review
Community and Stakeholder Engagement

January 2021 (Morning):
Environment, Climate Change
Infrastructure

New Policy Directions



The Gateway



- ▶ 6.1: Support the evolution of the evolution of UBCO into a more complete community.
- ▶ 6.3: Support the strategic and planned growth of Kelowna International Airport as a regional economic generator.
- ▶ 6.4: Support the continued development of industrial lands.

Suburban Neighbourhoods



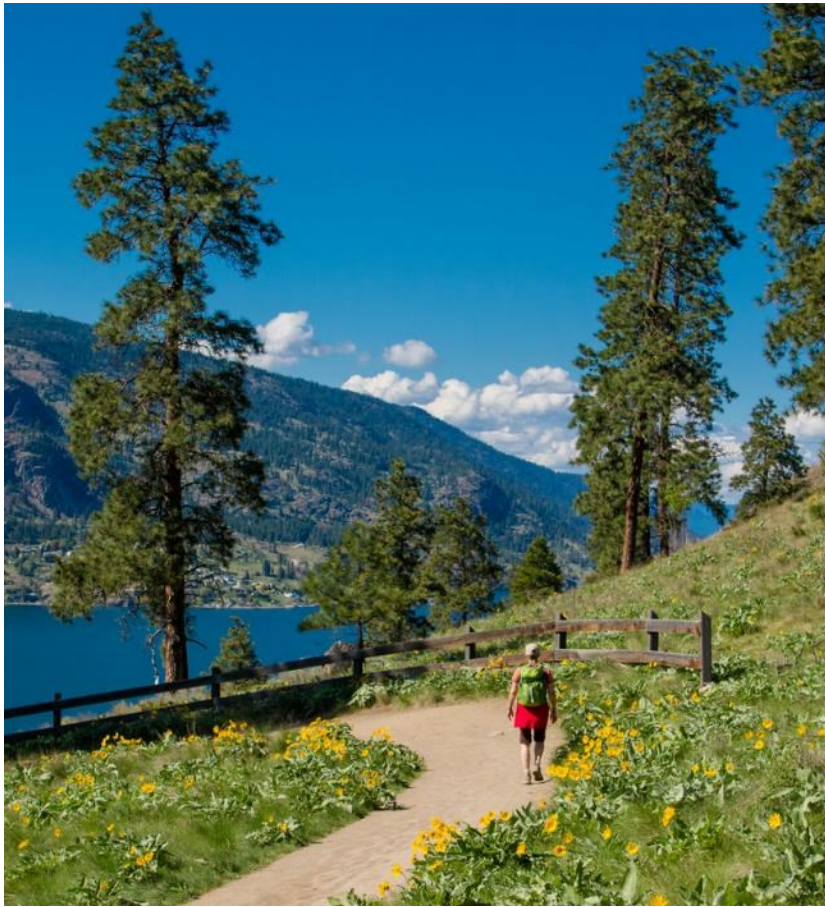
- ▶ 7.2: Design Suburban Neighbourhoods to be low impact, context sensitive and adaptable.
- ▶ 7.3: Create more complete communities in Suburban Neighbourhoods.
- ▶ 7.6: Support a variety of low-density housing.

Rural Lands



- ▶ 8.1: Protect and preserve agricultural land and its capability.
- ▶ 8.2: Ensure a compatible urban-rural interface that protects agricultural uses.
- ▶ 8.4: Stop urban sprawl into rural lands.

Parks Investments



- ▶ 10.1. Acquire new parks to enhance livability throughout the city.
- ▶ 10.2. Ensure parks and public spaces are connected to each other and accessible for all citizens.
- ▶ 10.3. Ensure parks reflect their unique natural and cultural context.

What's Next?





Discussion