



November 23, 2020

City Sign Public Art

Artist Presentation

- 89% agreed, or strongly agreed, artwork adds to the quality and diversity of collection;
- 55% agreed, or strongly agreed, artwork reflects the qualities and aspirations unique to Kelowna;
- 100% agreed, or strongly agreed, that the Artist has the experience and ability to implement the artwork.

Artist Selection

- High-profile location,
- Greater confidence and surety in the outcome;
- Experience with both the design and fabrication techniques;
- Scale and number of pieces.

Artist Statement

- Better communicate ideas and concept;
- Public art videos posted to the City's YouTube channel;
- Enhance public appreciation for artwork and understanding of City public art



City Entry Sign - Option A (Figures at 1.2x Life-size)



City Entry Sign - Option B (Figures at 1.5x Life-size)



City Entry Sign - Option C (Figures at 1.8x Life-size)



250m distance



125m distance

City Entry Sign Approach View - Option A



250m distance



125m distance

City Entry Sign Approach View - Option B

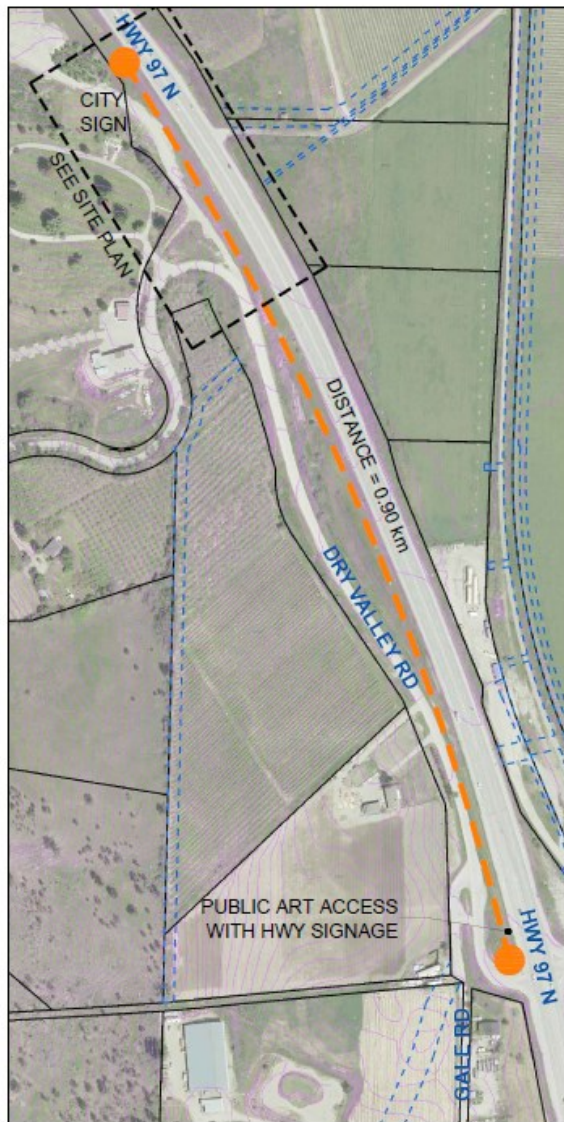


250m distance



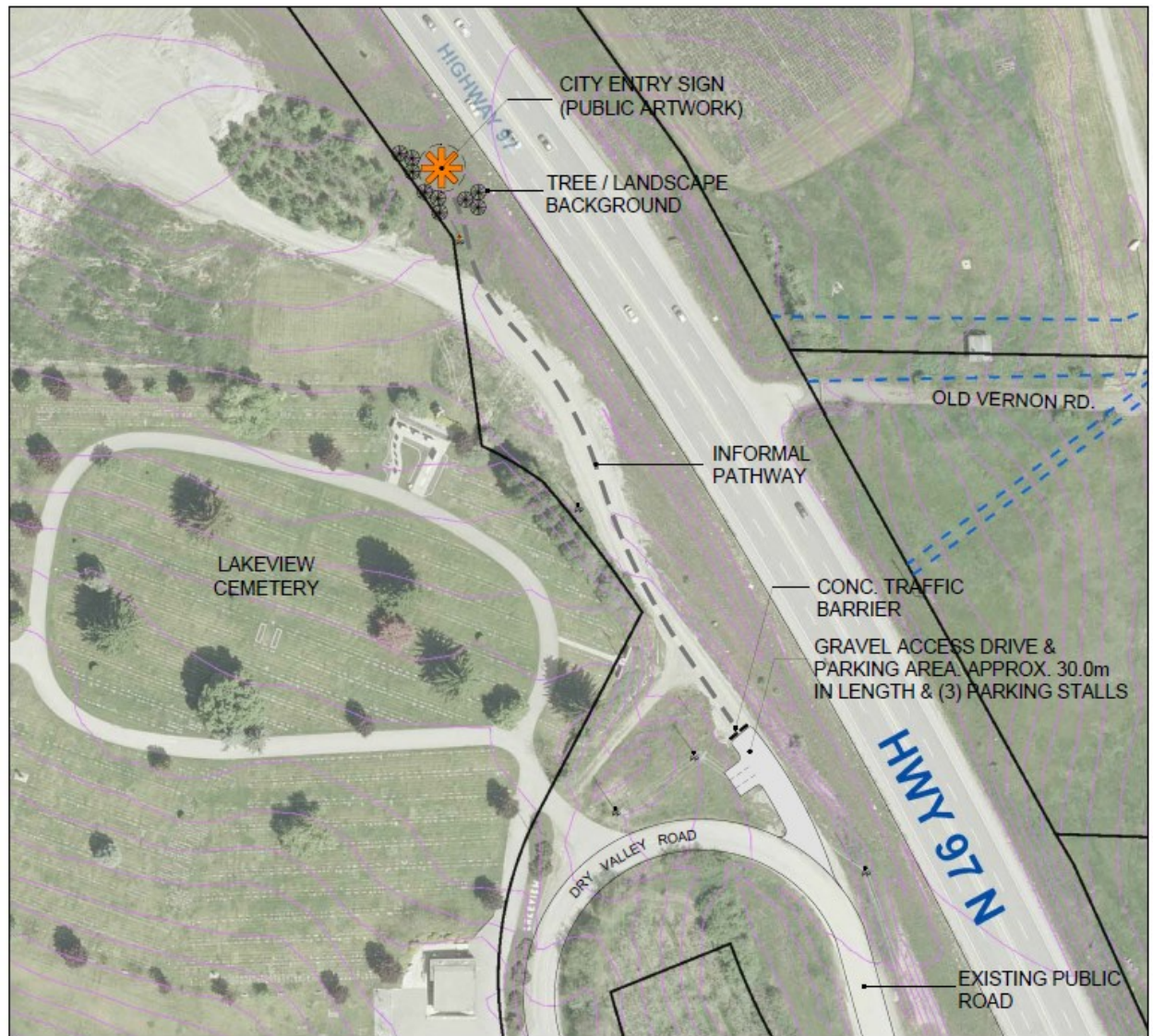
125m distance

City Entry Sign Approach View - Option C



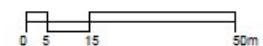
CONTEXT PLAN

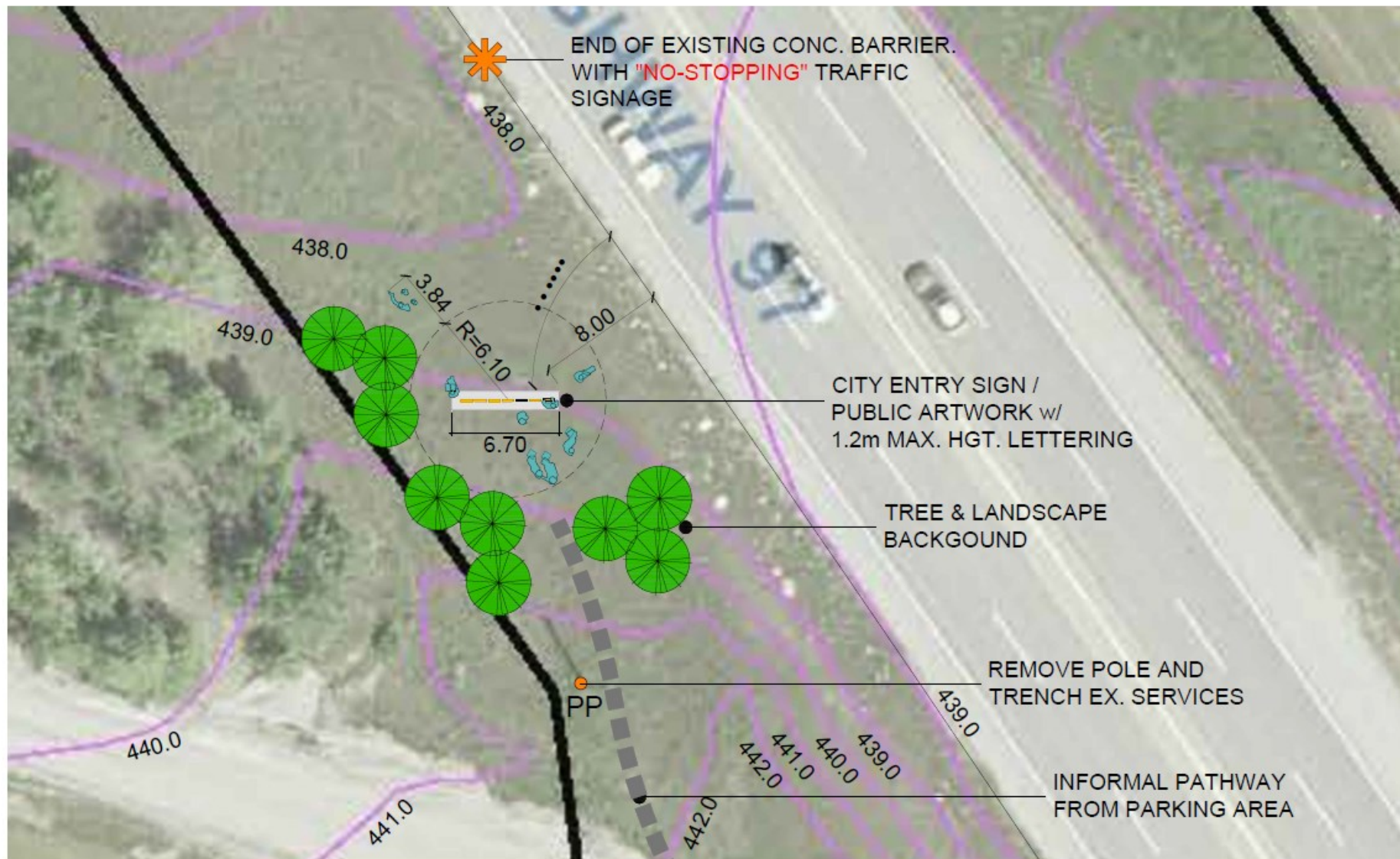
Drawing Title



CITY ENTRY SIGN - SITE PLAN

Drawing Title

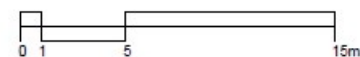




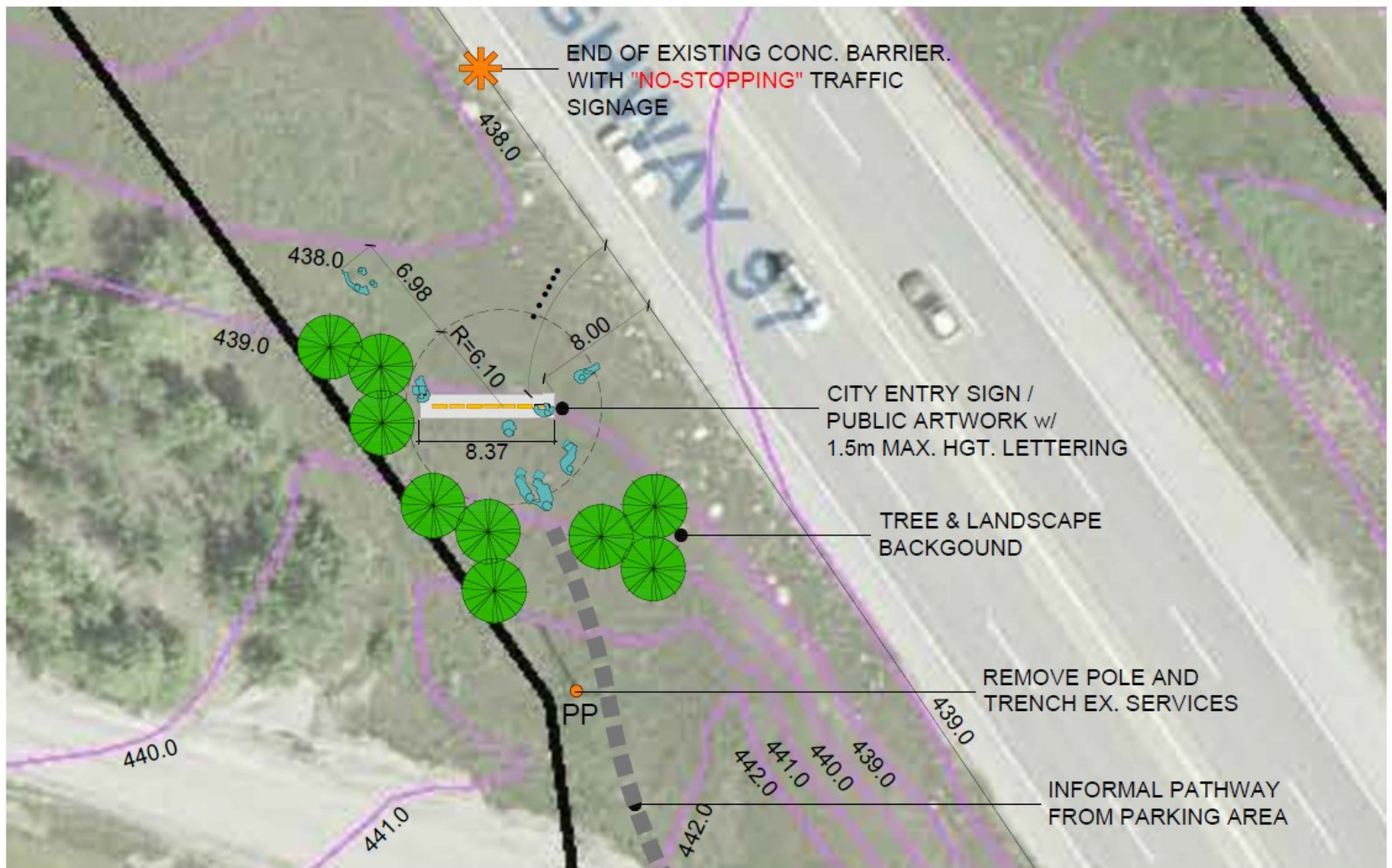
NORTH

CITY ENTRY SIGN - OPTION A

Drawing Title



City of
Kelowna

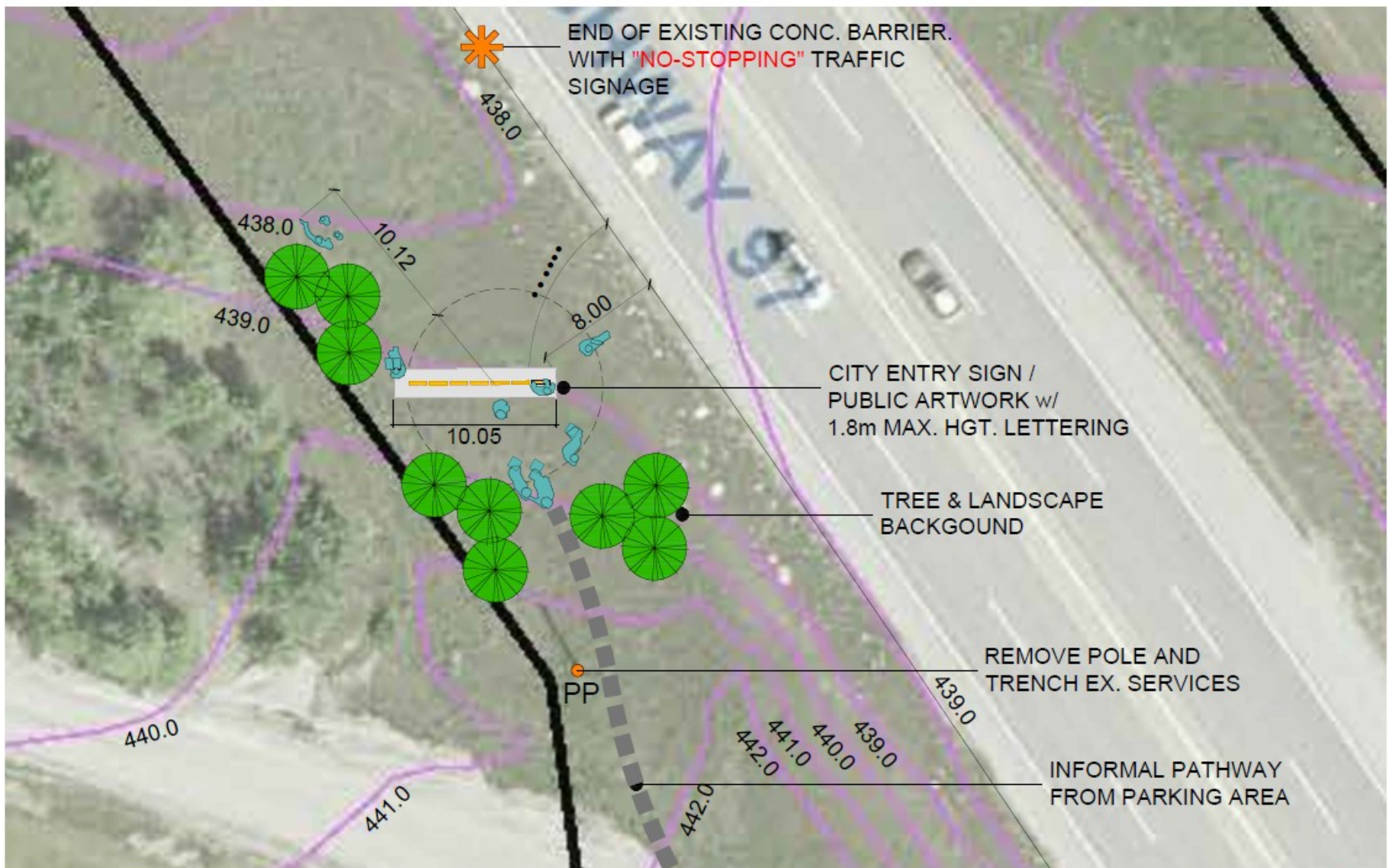


NORTH

CITY ENTRY SIGN - OPTION B

Drawing Title





NORTH

CITY ENTRY SIGN - OPTION C

Drawing Title





Questions?

For more information, visit kelowna.ca.