

286 Lake Avenue

Rezoning to allow a carriage house

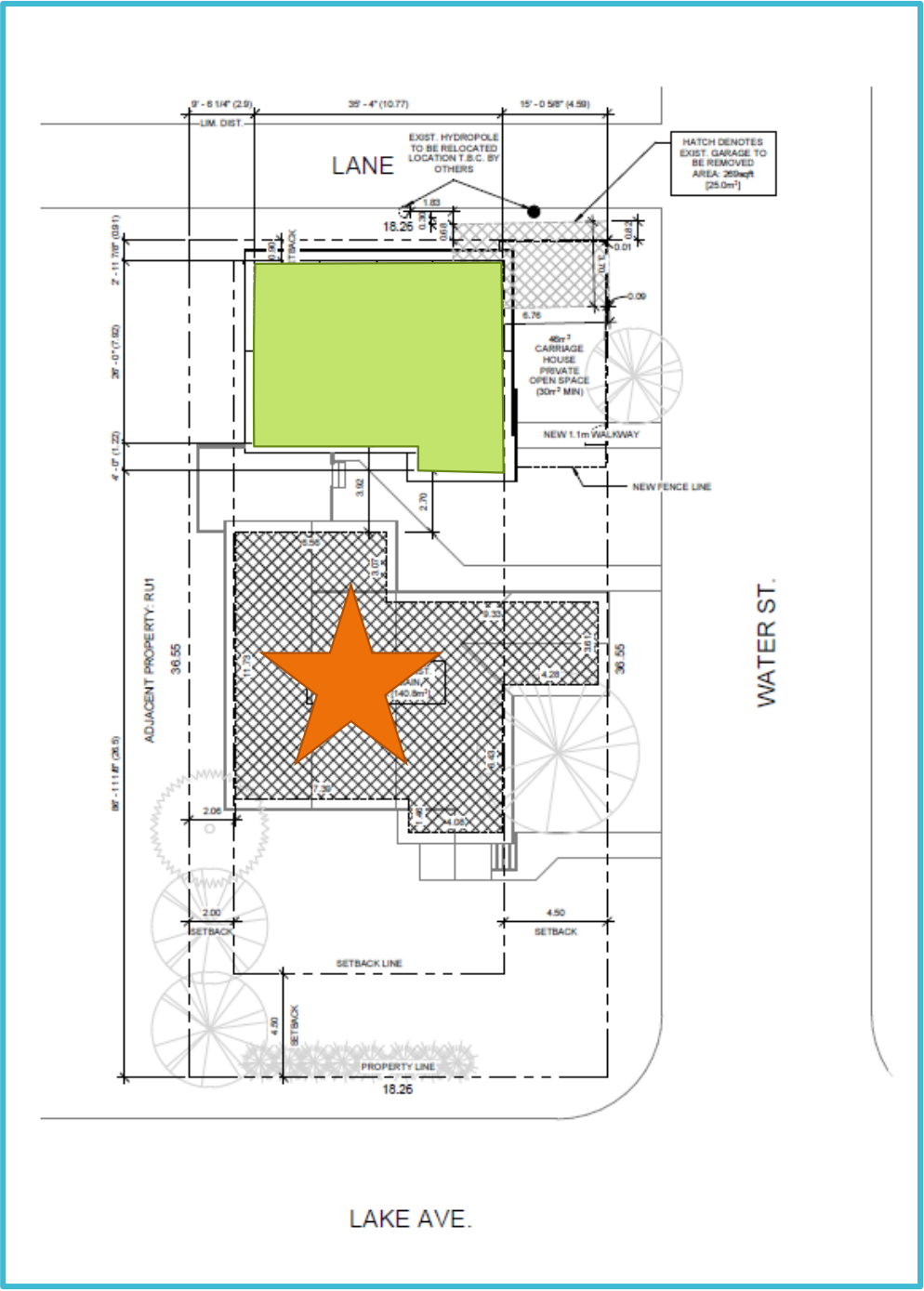


Carriage house attributes

- Corner site lends itself to carriage house development
- High walkable score of 74 which is considered “Very Walkable”
 - Most errands can be accomplished on foot.
 - 48 Transit Score
 - 99 Bike Score - Biker’s Paradise
 - Daily errands can be accomplished on a bike.
- Good infill and use of land
- Close to desirable amenities
- Proposed design meets all Zoning bylaw regulations

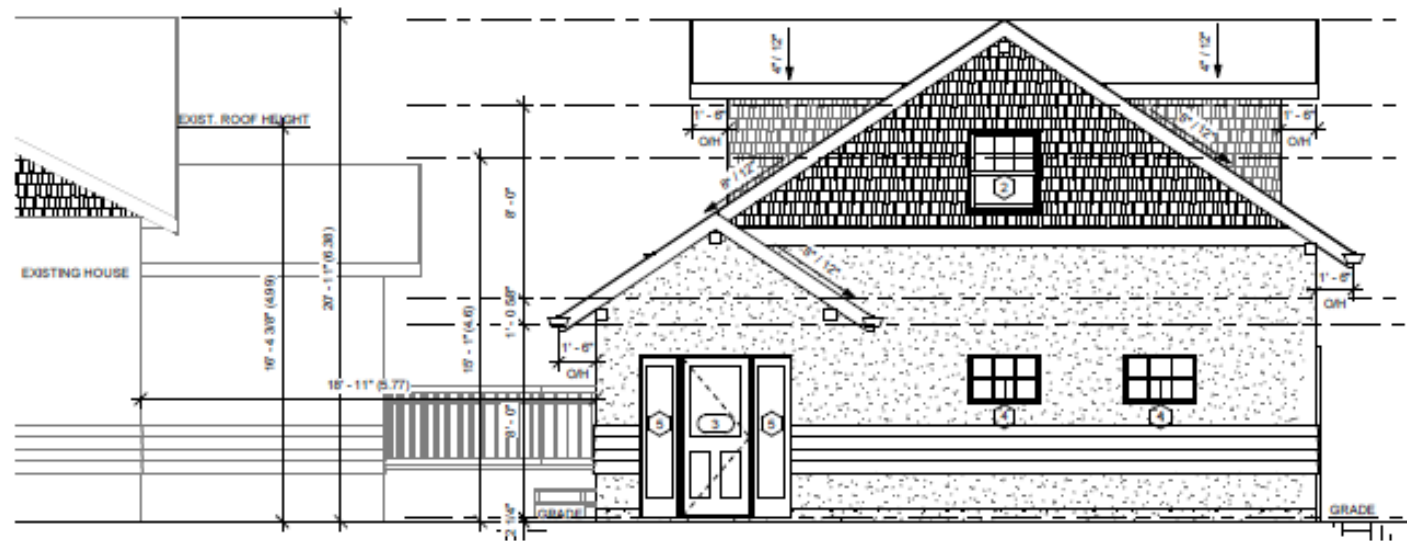


Proposed plan



North

- Neighbourhood comments



Proposed carriage house elevation facing Water Street.

Neighbourhood
context

Questions?

