



2020

# Active Transportation Corridors Update

August 24, 2020

# Outline

- ▶ Context
  - ▶ Goals - From City Vision to Projects
  - ▶ Recent Trends
- ▶ Projects Update
- ▶ Strategy (interim/temporary)

# Imagine Kelowna & Transportation Master Plan

## Transportation Master Plan

*"Kelowna will be a city with vibrant urban centres where people and places are conveniently connected by diverse transportation options that help us transition from our car-centric culture"*

## Ped Bike Master Plan

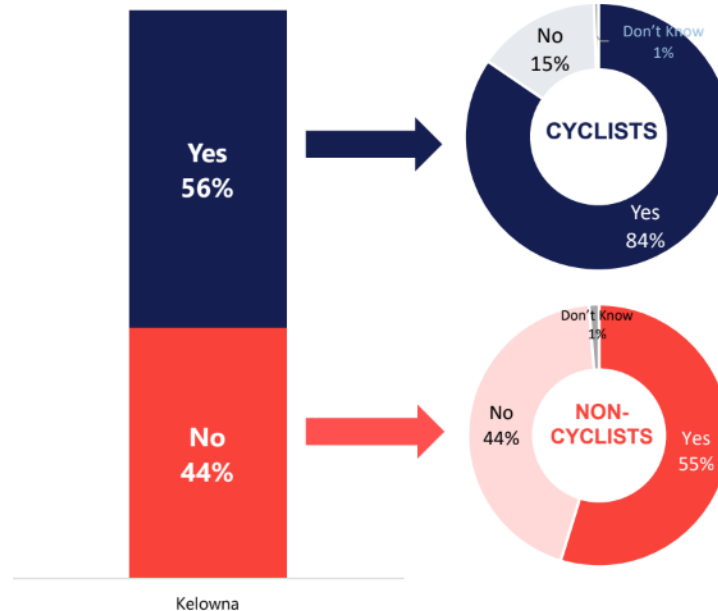
*"make walking and cycling safer, convenient, and practical modes of travel"*



# Kelowna Supports ATC

**Cycling infrastructure makes a difference for folks who cycle...and those who don't... yet.**

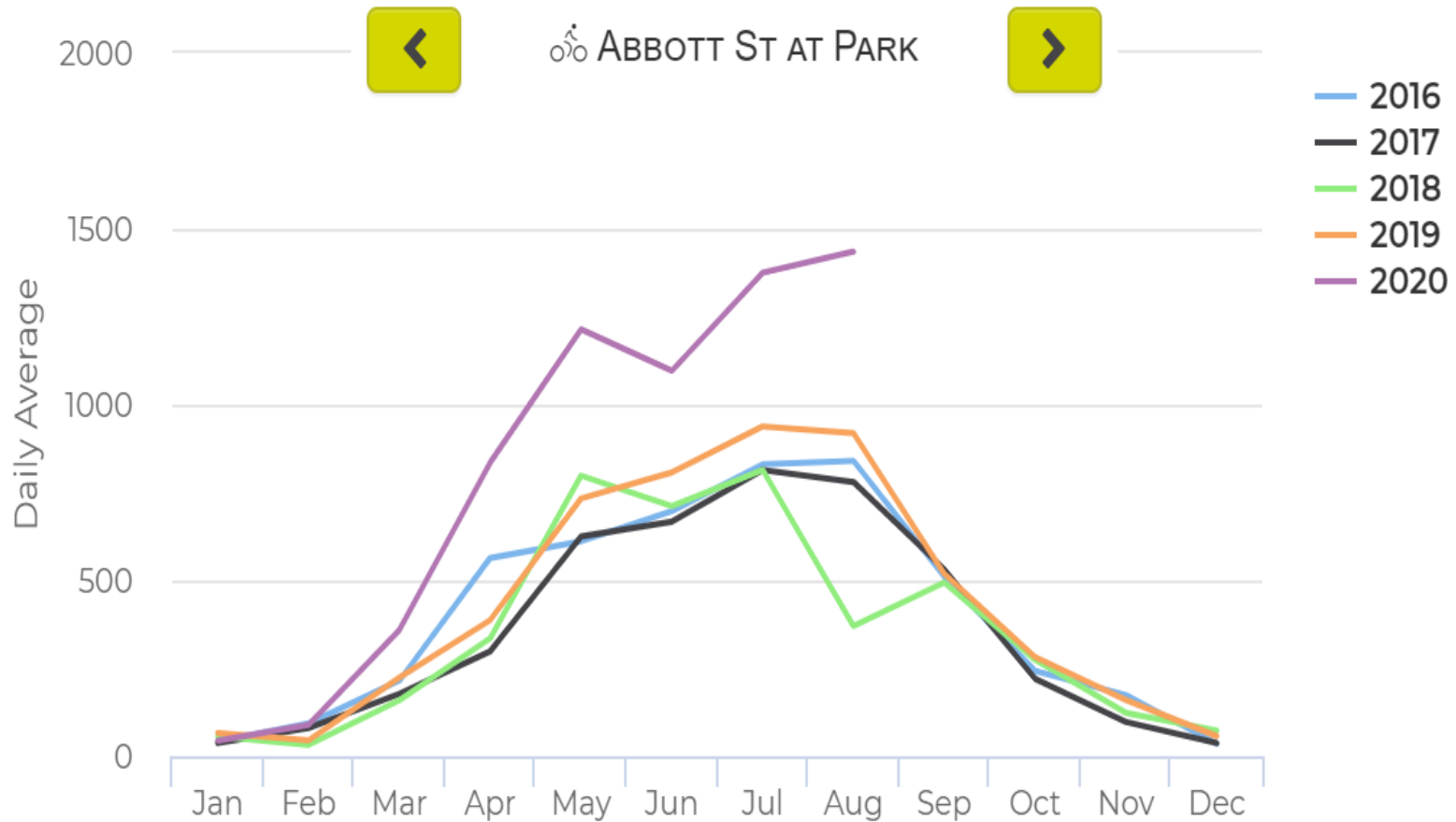
*In the previous 12 months, have you used a bicycle?*



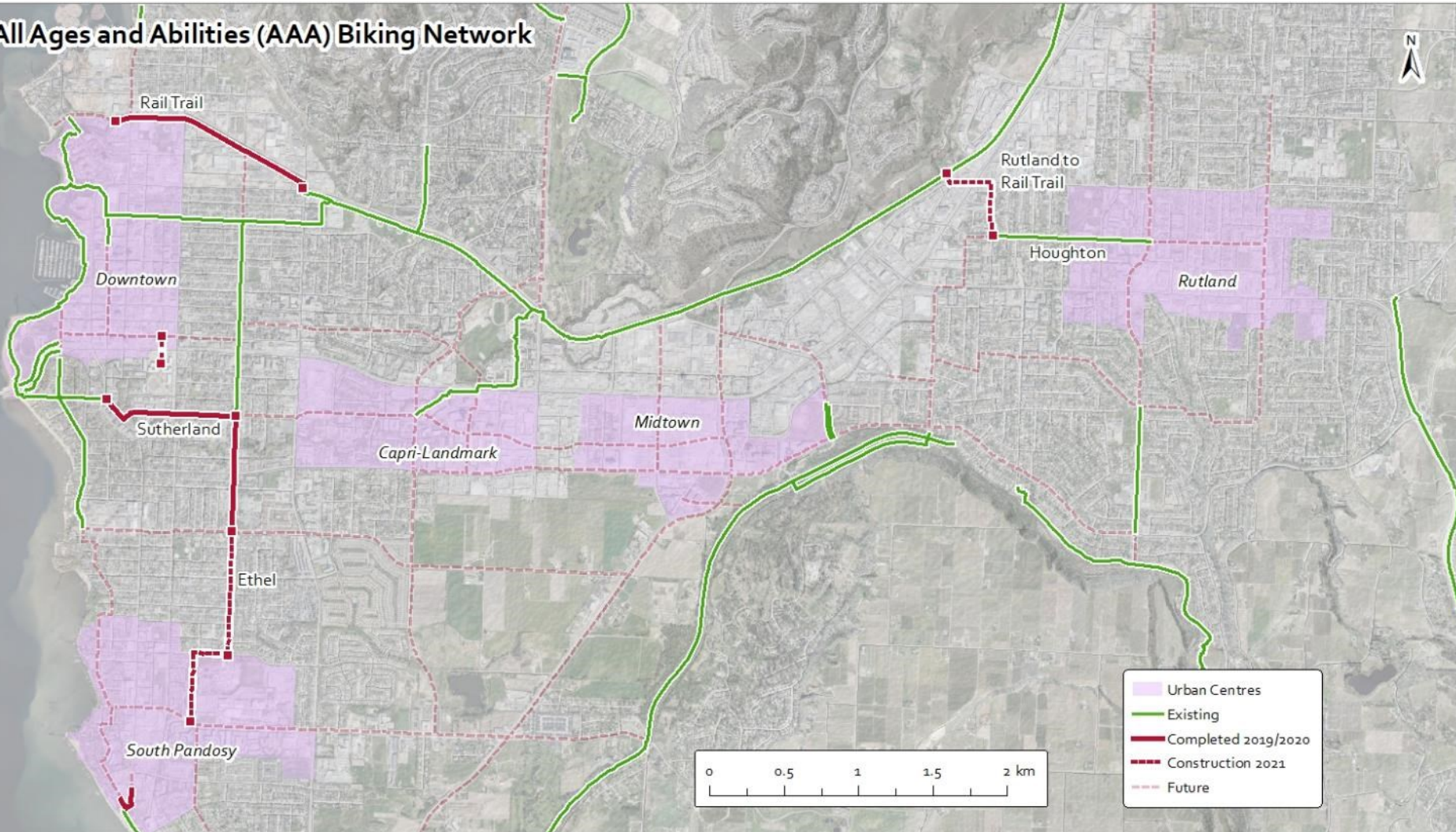
Will you be **likely to cycle more** in the future if more cycling infrastructure (e.g. separated bike lanes) is built in your city?

Will you be **more likely to cycle** in the future if more cycling infrastructure (e.g. separated bike lanes) is built in your city?

# Travel Trends



## All Ages and Abilities (AAA) Biking Network



# Current Projects

## Sutherland 1

Lake Ave to Ethel St

- Opened 2019
- ~950 m two way Protected Bike Lanes



# Current Projects

## Ethel 4

Sutherland Ave to Springfield Rd

- Opened 2019
- ~380 m of two way unidirectional protected bike lanes





# Current Projects

## Ethel 5

Springfield Rd to Rose  
Ave/Guisachan Rd

- Opening August 27, 2020
- ~380 m of two-way unidirectional protected bike lanes
- Remaining intersection works coordinated with Utility improvements



# Current Projects

## Ethel 6

Rose Ave/Guisachan Rd to Raymer Ave

- Planned to be completed early 2021
- ~820 m of two-way unidirectional protected bike lanes
- Coordination with Utility upgrades
- Uses existing infrastructure where possible

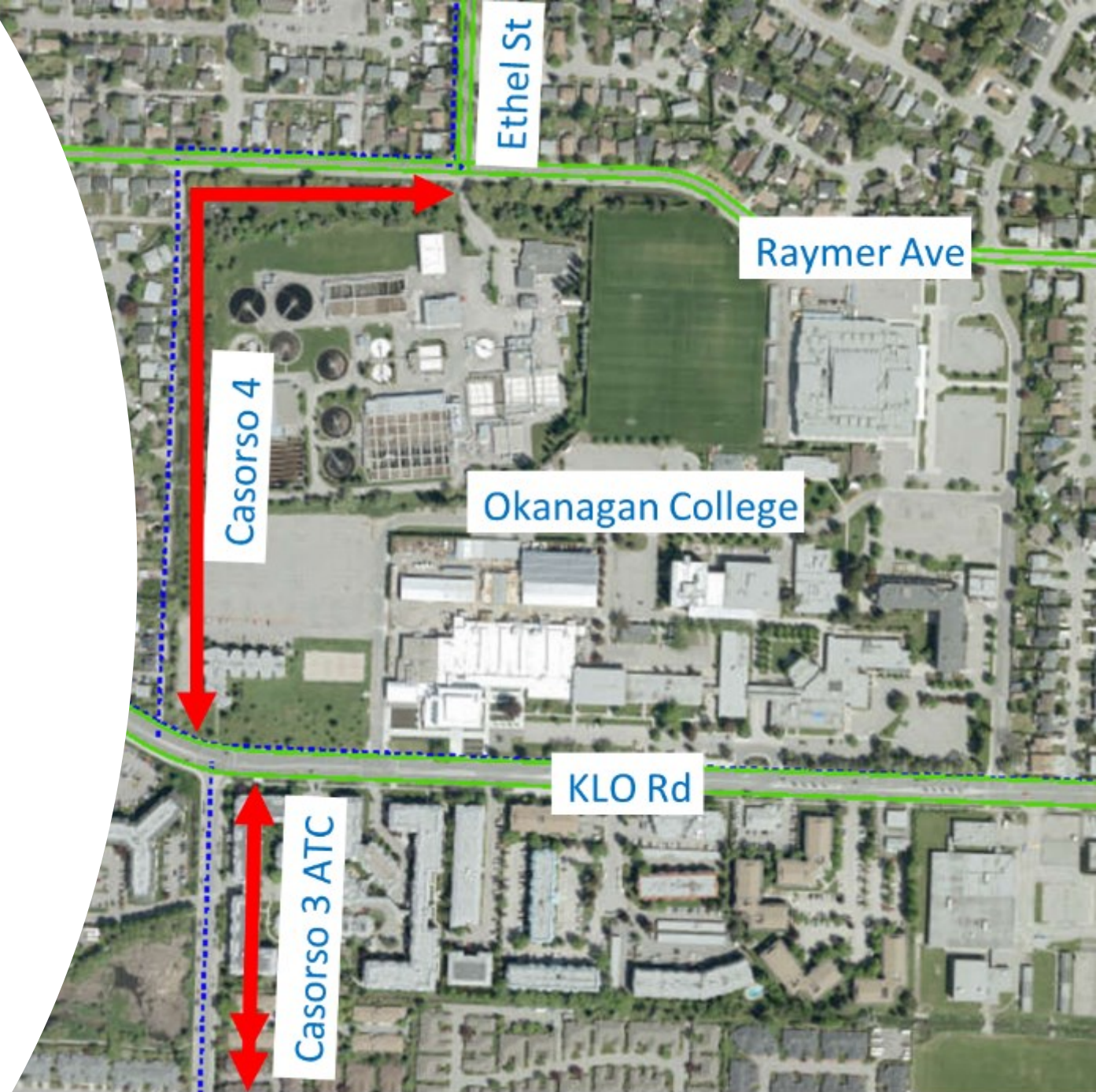


# What's Next

## Casorso 4

Ethel St to KLO Rd

- Conceptual Design complete 2020
- Planned construction in 2021
- Uses existing Lane to accommodate ATC connection



# What's Next

## Casorso 3

KLO Rd to Barrera Rd

---

- Planning & Design in 2020/2021
- Use existing infrastructure where possible
- Connection to the larger network and destinations to the south



# What's Next

## Houghton 1 Rutland to Okanagan Rail Trail

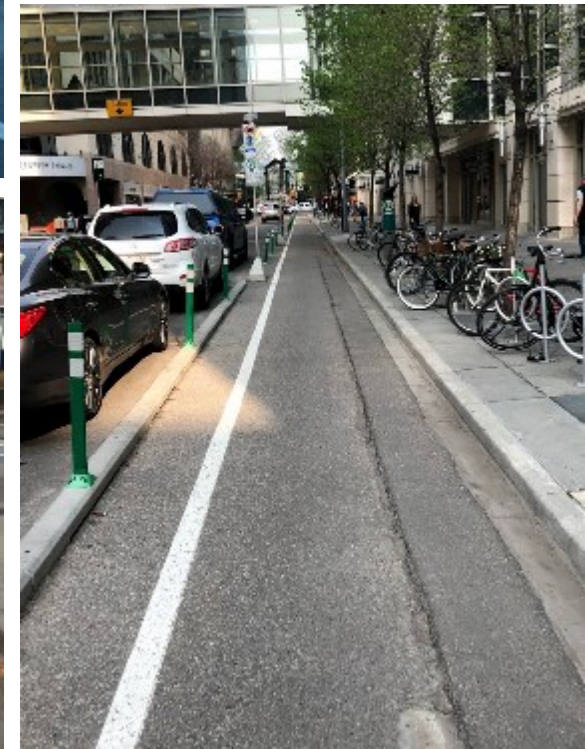
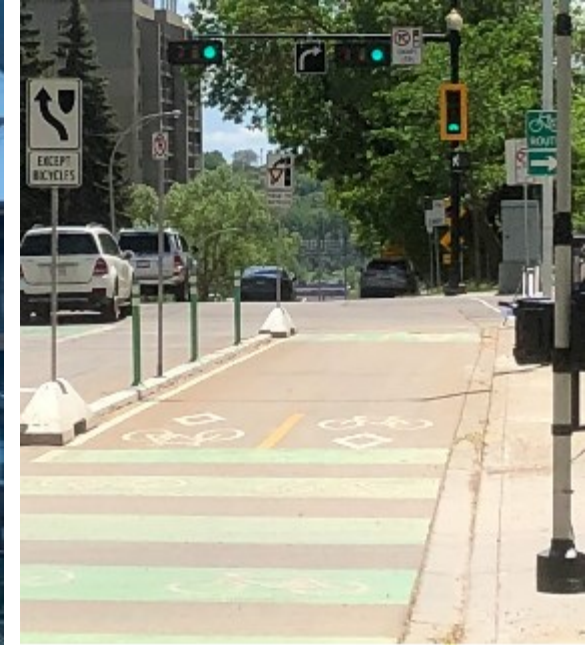
- Multi Use Pathway
- Connecting ORT to Houghton MUP
- Detailed Design Ongoing
- Proposed construction in 2021

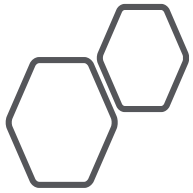


# Moving Forward

Interim and Pilot Projects

Closing Network Gaps

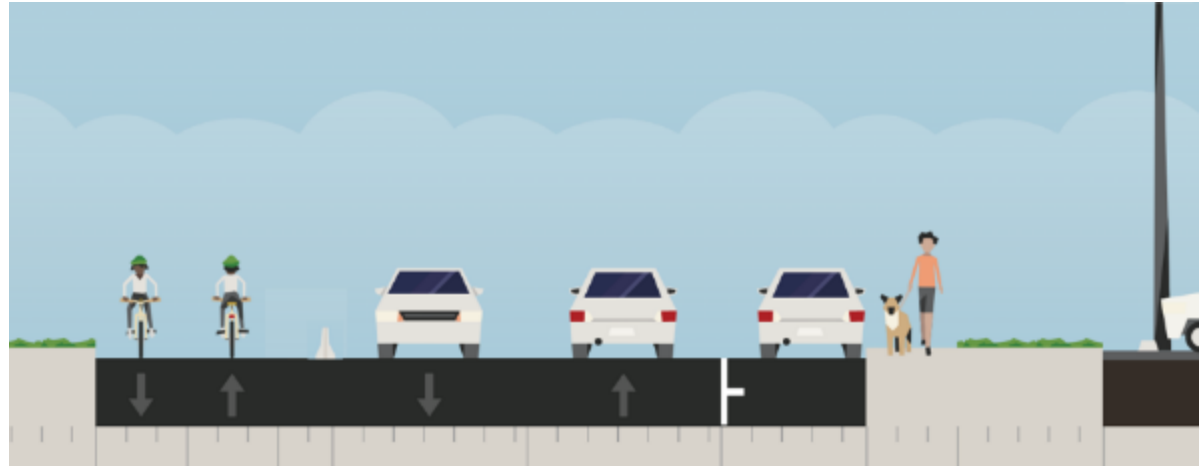


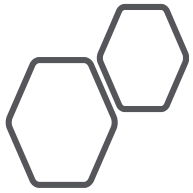


# Okanagan Rail Trail

West of Ellis to Waterfront

- Connection Okanagan Rail Trail to the waterfront
- Interim Barrier using existing infrastructure

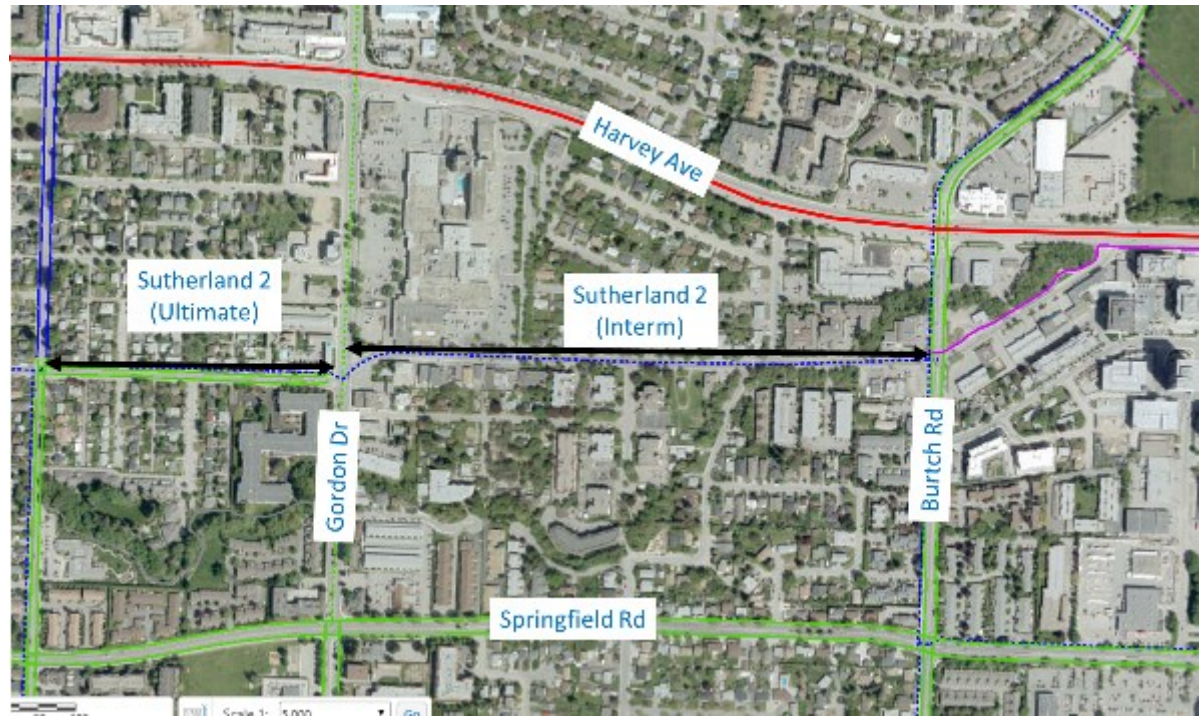
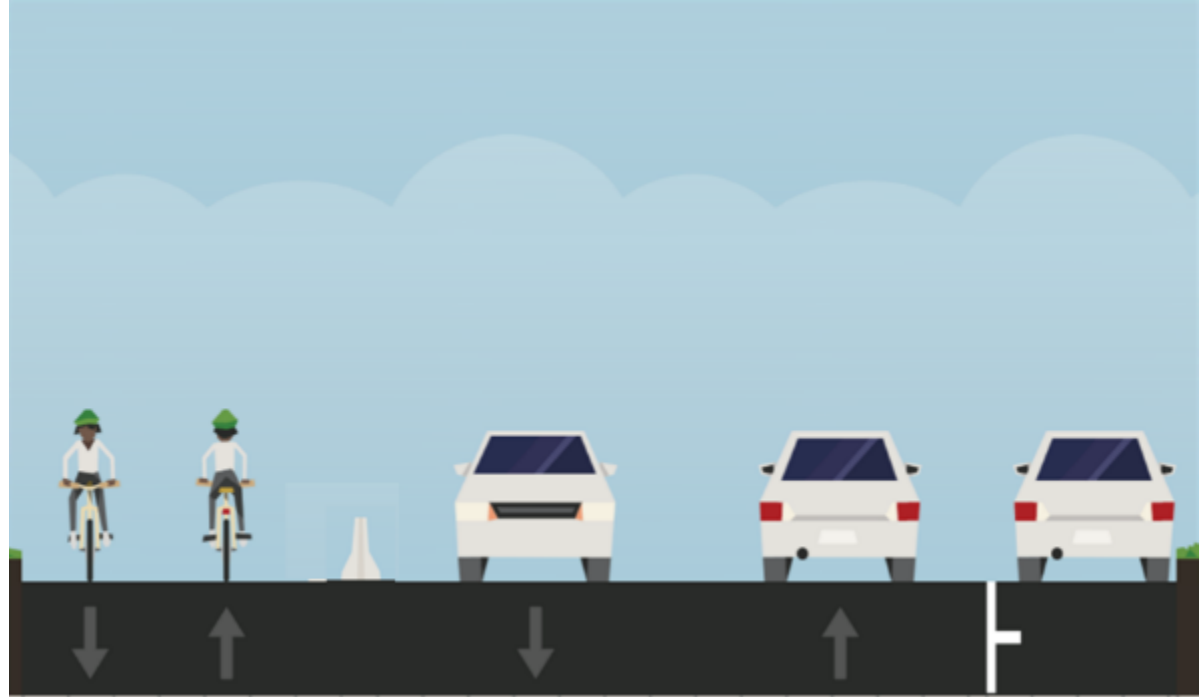




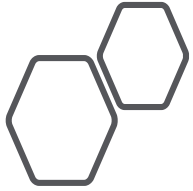
# Sutherland 2

## Ethel St to Burtch Rd

- Ultimate ATC Ethel to Lequime St
- Interim infrastructure Lequime St to Burtch Rd







# Abbott - Pilot

## Rose to Pandosy Urban Centre

- 2020 Planning & Design
  - Look at options
  - Public engagement
- 2021 implementation
- 2021/2022 evaluation & consideration to extend





*Questions?*

For more information, visit [kelowna.ca](http://kelowna.ca).