



**CARE FOR OUR KIDS**

A Collaborative Approach to Understanding Child Care  
in the Central Okanagan

# Community Child Care Planning

## Central Okanagan

Council Presentation

July 13, 2020

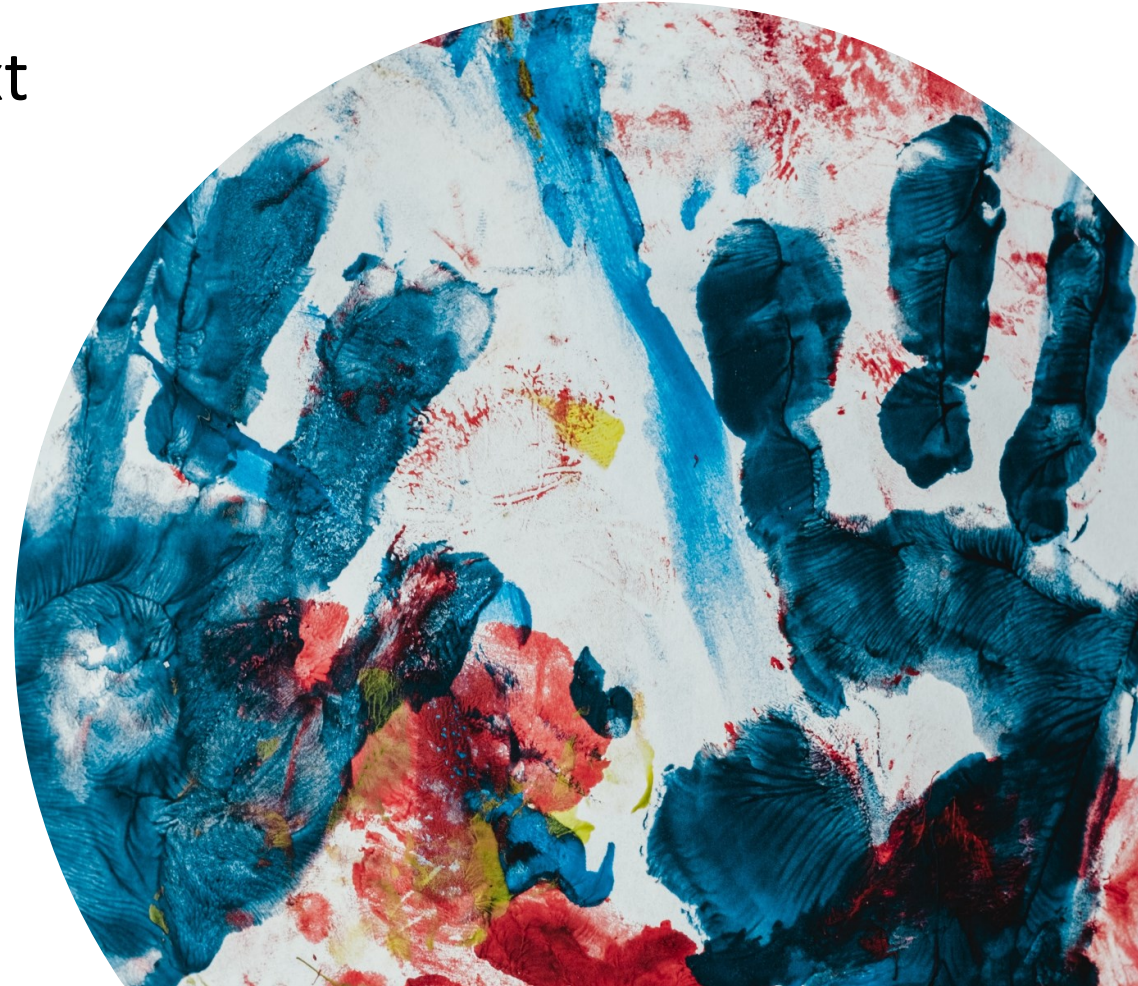




# Agenda

---

1. Project introduction & provincial context
2. Methodology
3. Results
4. Recommendations & Action Plan
5. Council Resolution



# Why should better access to child care matter?

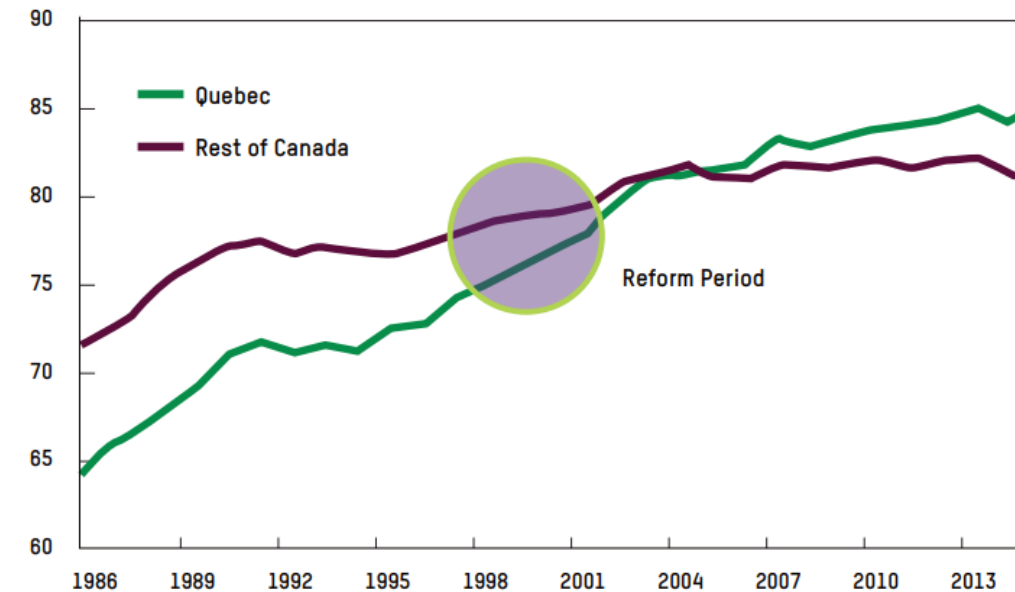
- Economic growth
- Child development
- Gender equality

International studies, program evaluations and quality measurements have repeatedly shown that participation in early childhood education and care programs has positive effects on children's cognitive and language development and their happiness, and has long-term impacts on their education, employment and earnings.<sup>18</sup>

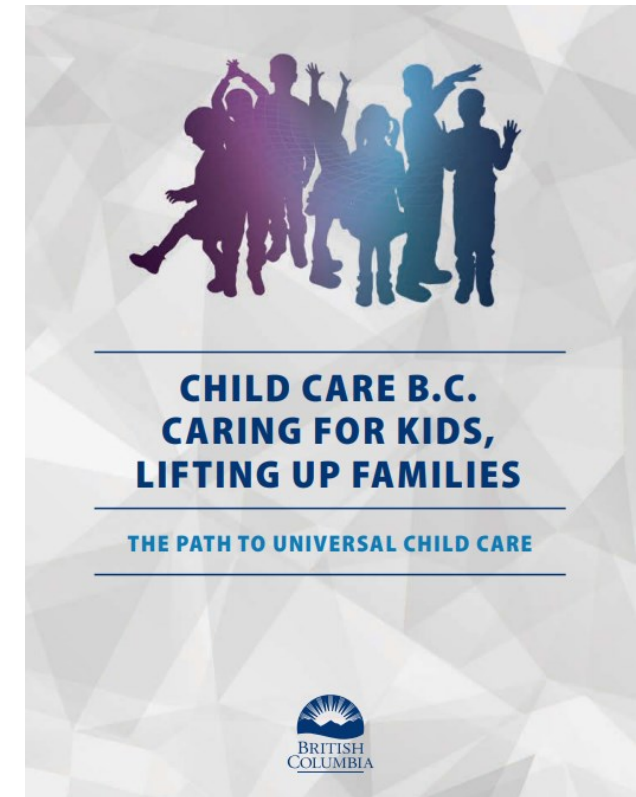
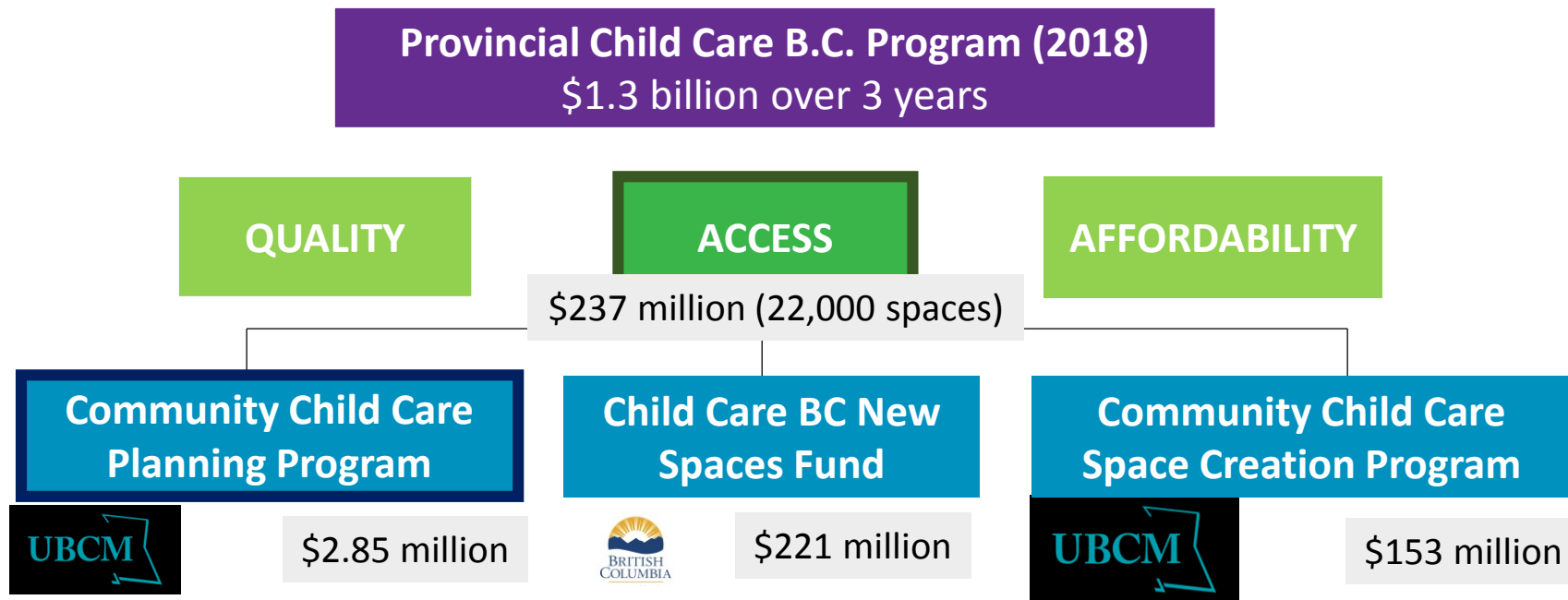
**\$19.2 BILLION**

IF THE 670,000 WOMEN WHO WERE WORKING PART-TIME IN 2016 WERE ABLE TO FIND FULL-TIME WORK THEY WANTED, THEY WOULD HAVE BROUGHT HOME AN ADDITIONAL \$19.2 BILLION IN WAGES.<sup>9</sup>

Figure 2: Women's Labour Force Participation Rates in Quebec and the Rest of Canada, Ages 25-54



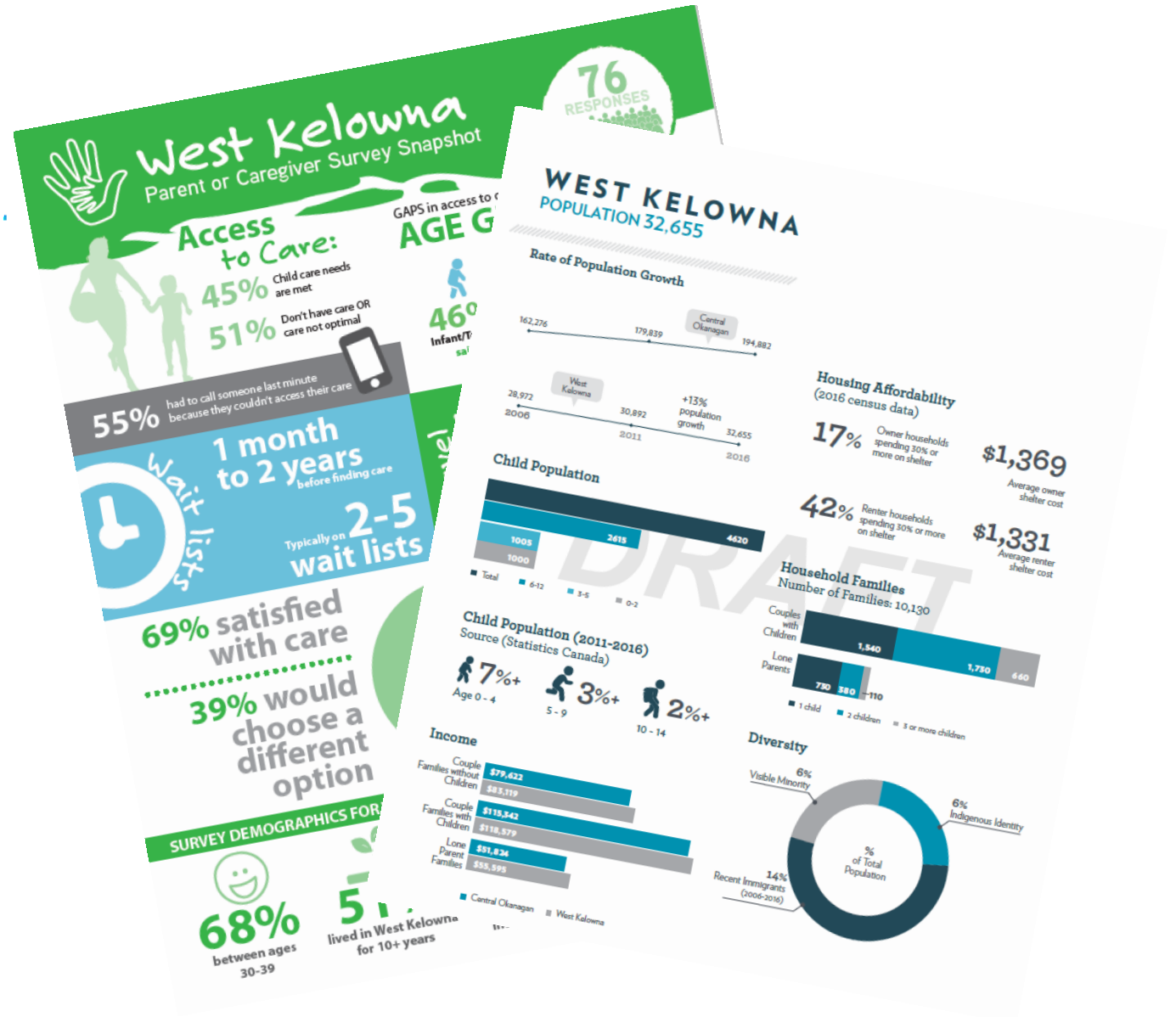
# Provincial Strategy - Child Care B.C. (Budget 2018)



Goal: Move towards Universal Child Care

# Methodology

- Community Engagement
- Child Care Inventory
- Community Profile
- Background Policy Research
- Space Creation Targets
- Recommendations & Actions





# Results • Community Engagement

---

427  
participants

PARENT & CAREGIVER SURVEY

40  
participants

POP-INS

58  
participants

PROVIDER SURVEY

18  
participants

ONE-ON-ONE INTERVIEWS

40+  
participants

FOCUS GROUPS

51  
participants

CHILD CARE PROVIDER WORKSHOP

# Results • Inventory

Table 1. Number of child care spaces and program locations for each municipality

Child care program locations within the Central Okanagan:

**Kelowna**

120

**Lake Country**

13

**Peachland**

4

**West Kelowna**

58

**Total**

195

	Group Child Care (birth - 36 months)	Group Child Care (30 months to school age)	Licensed Preschool	Group Child Care (school age)	Multi-Age Child Care	Family Child Care	In-Home Multi-Age Child Care	TOTAL Child Care Spaces
Kelowna	551	1088	495	1457	293	147	5	4036
Lake Country	24	89	84	125	0	21	8	351
Peachland	0	8	18	44	0	7	0	77
West Kelowna	72	223	266	527	64	105	31	1288
<b>TOTALS</b>	647	1408	863	2153	357	280	44	5752

# Results: Current Supply & Access Rate

Table 5. Child population, number of spaces and access rate:  
Ages 0 – 5

Community Child Population	Child Population (0 to 5 years)	Number of Spaces (2019)	Access Rate (spaces per 100 children)
Kelowna	6635	1862	28.1
Lake Country	755	128	16.9
Peachland	225	12	5.1
West Kelowna	2005	395	19.7
<b>TOTALS</b>	9620	2396	Average = 17.4

Table 6. Child population, number of spaces and access rate:  
Ages 6 – 12

Community Child Population	Child Population (6 to 12 years)	Number of Spaces (2019)	Access Rate (spaces per 100 children)
Kelowna	8600	1680	20
Lake Country	990	140	14
Peachland	275	48	17
West Kelowna	2615	627	24
<b>TOTALS</b>	12480	2494	Average = 18.1

\*Licensed preschool spaces were not used to determine access rates as programs are typically part-time and families may still require additional care to meet their needs.





## Results: Demand & Space Creation Targets

---

**Ages 0 to 5:**

**TARGET:**

**2163 total spaces in 10 years**

**~ 30 new spaces per year  
over the next 10 years.**

**Ages 6 to 12:**

**TARGET:**

**12,708 total spaces in 10 years**

**~ 1103 new spaces per year  
over the next 10 years.**



## Results • Recommendations & Actions

---

### **12 recommendations under 5 themes across the Central Okanagan:**

- Process
- Policy
- Partnerships
- Advocacy
- Education & Training



## Recommendations: Process

---

- **Streamline** local government regulatory **processes** (business licensing and zoning) and work with licensing to improve application and referral steps
- Promote and consider developing **municipal incentives** for child care providers (i.e. Free business licensing for startups, Permissive Tax Bylaw)



## Recommendations • Policy

---

- **Align policy documents** that are inclusive of child care



## Recommendations: Partnerships

---

- Consider **joint-use agreements** between public institutions to help facilitate the creation of additional child care spaces
- Identify, review and **assess under-utilized physical space** within the community suitable for child care through community partnerships



## Recommendations: Advocacy

---

- Advocate for child care to be **included in elementary** schools
- Advocate for the implementation of new licensed child care facilities in **new school builds**
- Advocate to the province for **fair wages, benefits, continuing education** and structured apprentice program for child care providers (ECEs) – (i.e. support for \$10 day child care)
- Support and **encourage employers** to share responsibility for child care within their communities



## Recommendations: Education & Training

---

- Explore the development of child care startup workshops to ease the process for new licensed child care providers
- Improve the experience for parents who require flexible care or are looking for different types of child care solutions that align with family care needs
- Raise awareness about the importance of Early Childhood Education and the role of Early Childhood Educators (ECEs)



## Council Resolution

---

That Council direct staff to work with the Central Okanagan Child Care Committee to **submit final UBCM grant report and the Child Care Community Planning Report to the UBCM and the Ministry of Child and Family Development** fulfilling the grant obligations of the Child Care Space Planning program.





Thank you.