



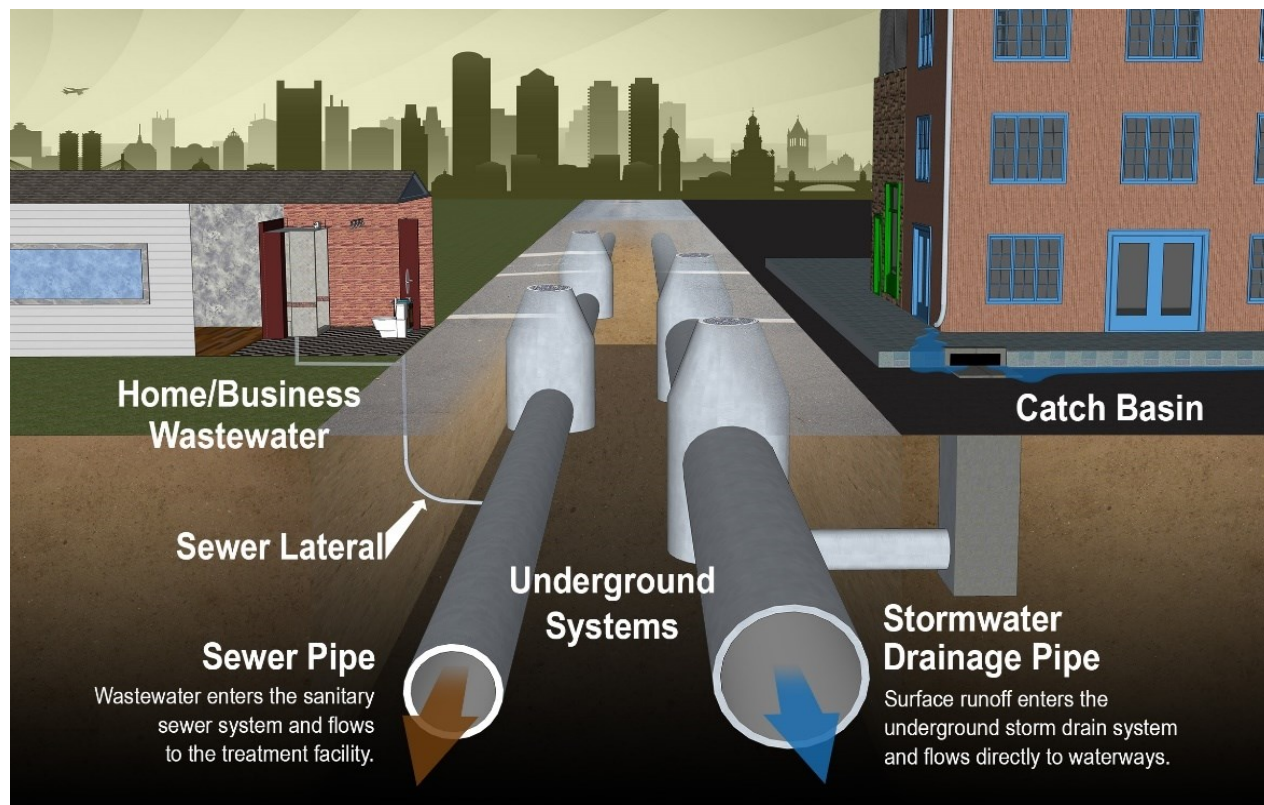
# WASTEWATER UTILITY UPDATE

June 2020



## BACKGROUND:

All collected wastewater is conveyed to and then treated at the state-of-the-art wastewater treatment facility



## **BACKGROUND:**

Utility manages more than \$750 million worth of assets

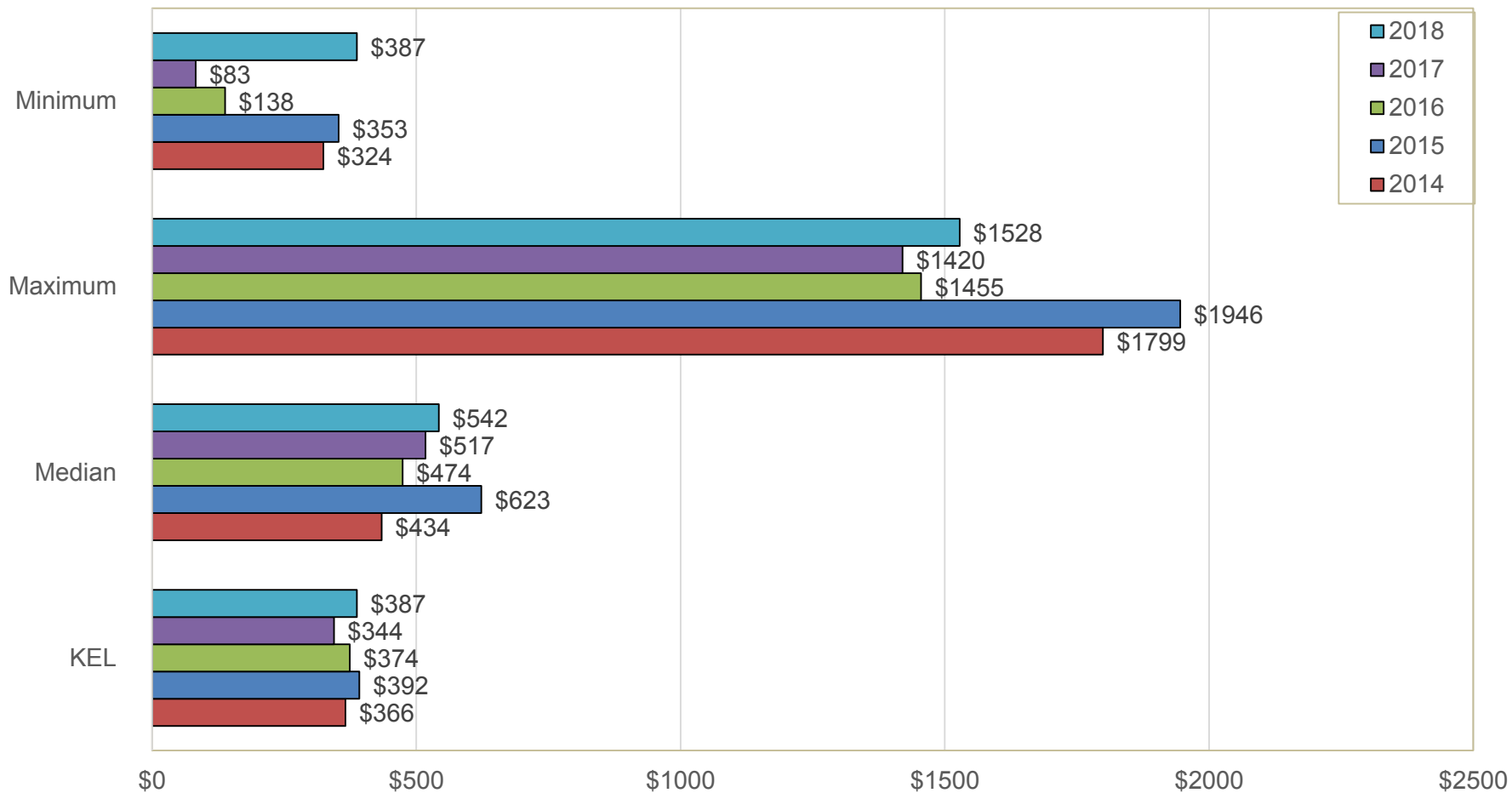
Assets include; 2 wastewater treatment facilities, 49 lift stations, over 590 kilometers of wastewater mains

## TREATMENT FACILITY:

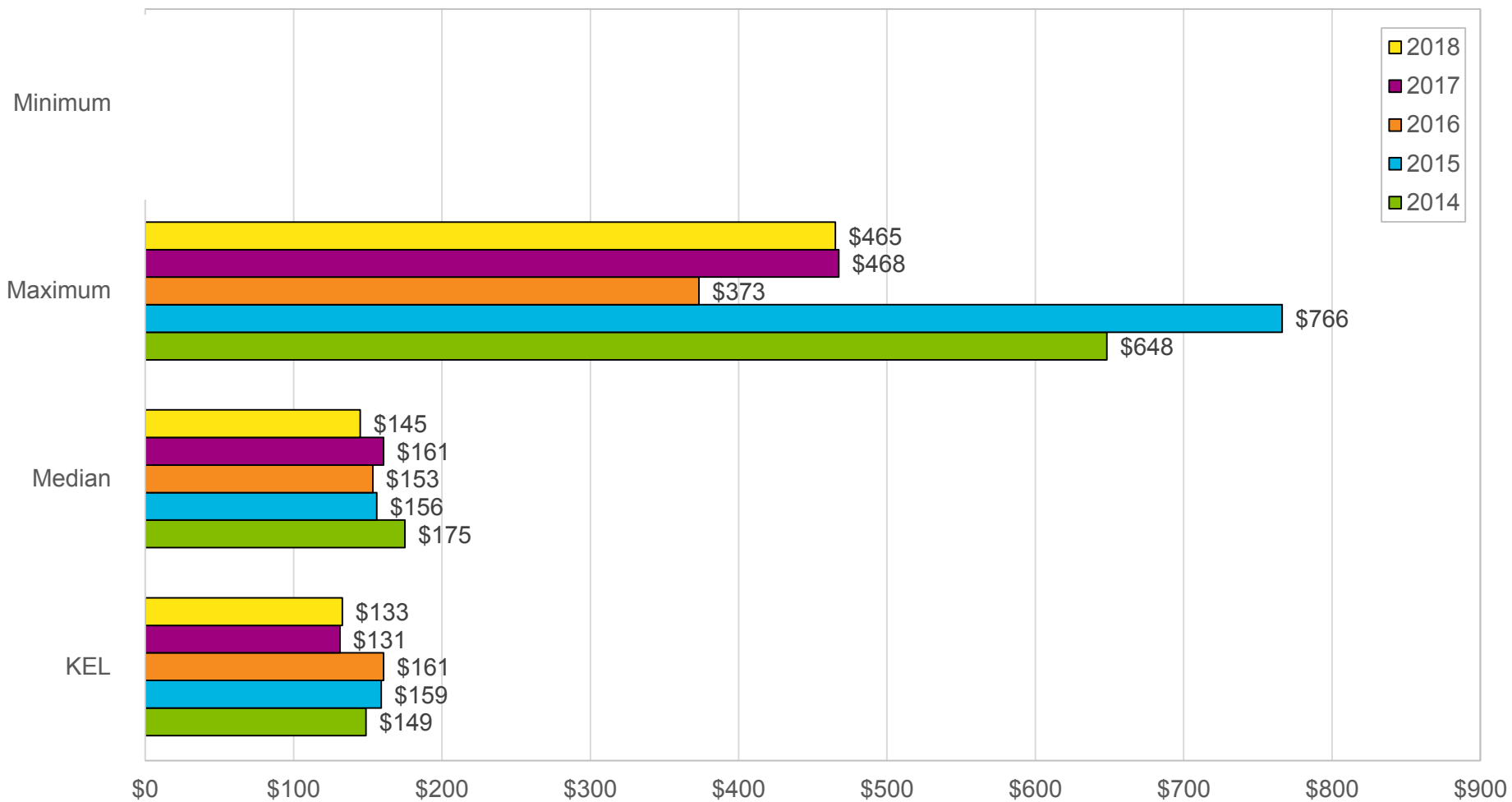
State of the art wastewater treatment facility, a leader in the industry



### O&M Costs Wastewater Treatment



### O&M Costs Wastewater Collection



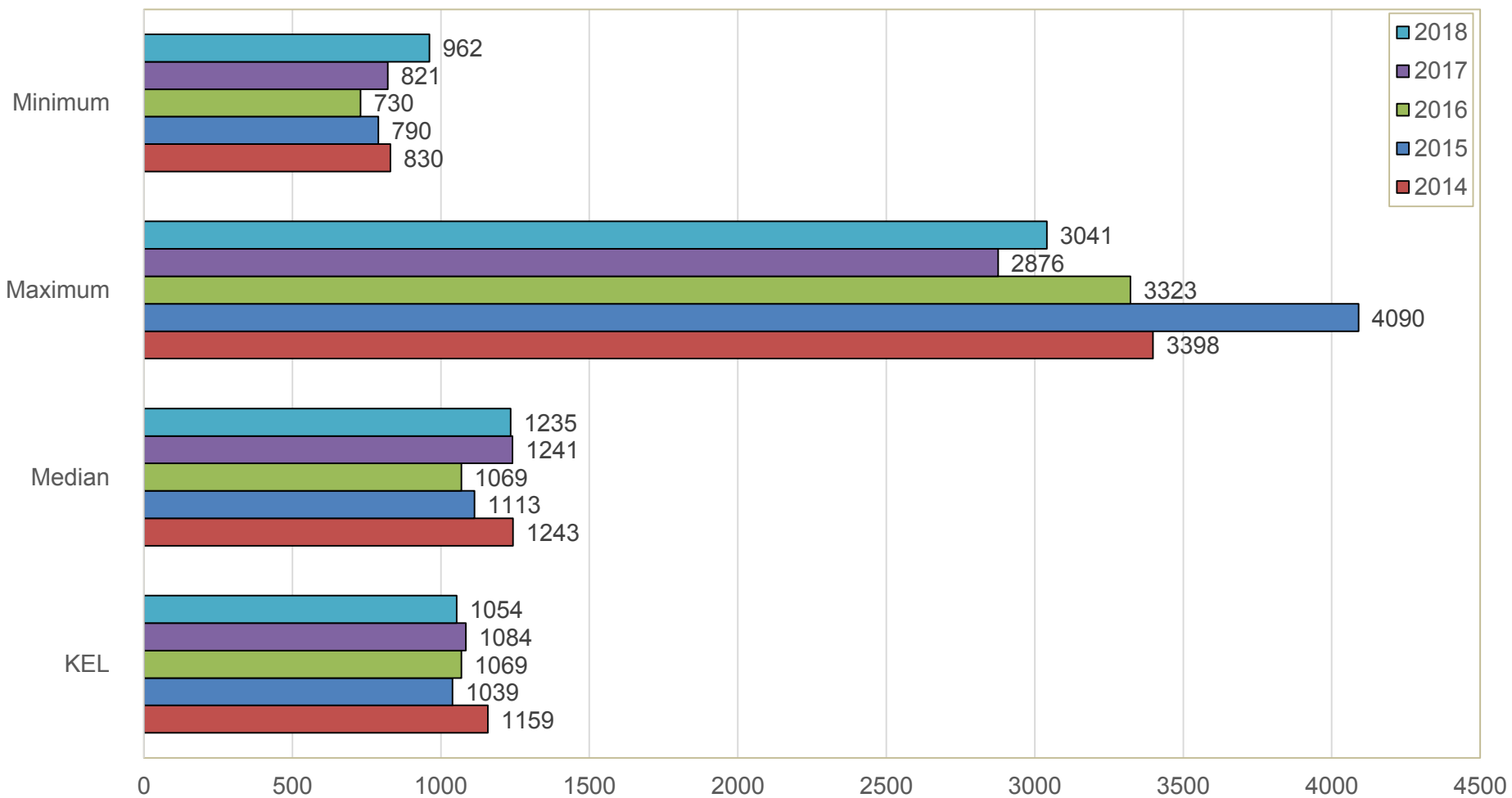
## ENERGY MANAGEMENT:

2018 - Energy audit completed

3 report suggestions were completed by staff in 2019



### Energy Consumed (kWh) / ML Treated Tertiary WWTPs





# LIFT STATION ASSESSMENT

Over the next 3 years 5 older stations are scheduled for renewal



## BIO SOLIDS MANAGEMENT

Capital planning of a digestion facility to supply a long-term plan to manage bio solids



# INNOVATION AND TECHNOLOGY

## Effluent reuse for irrigation





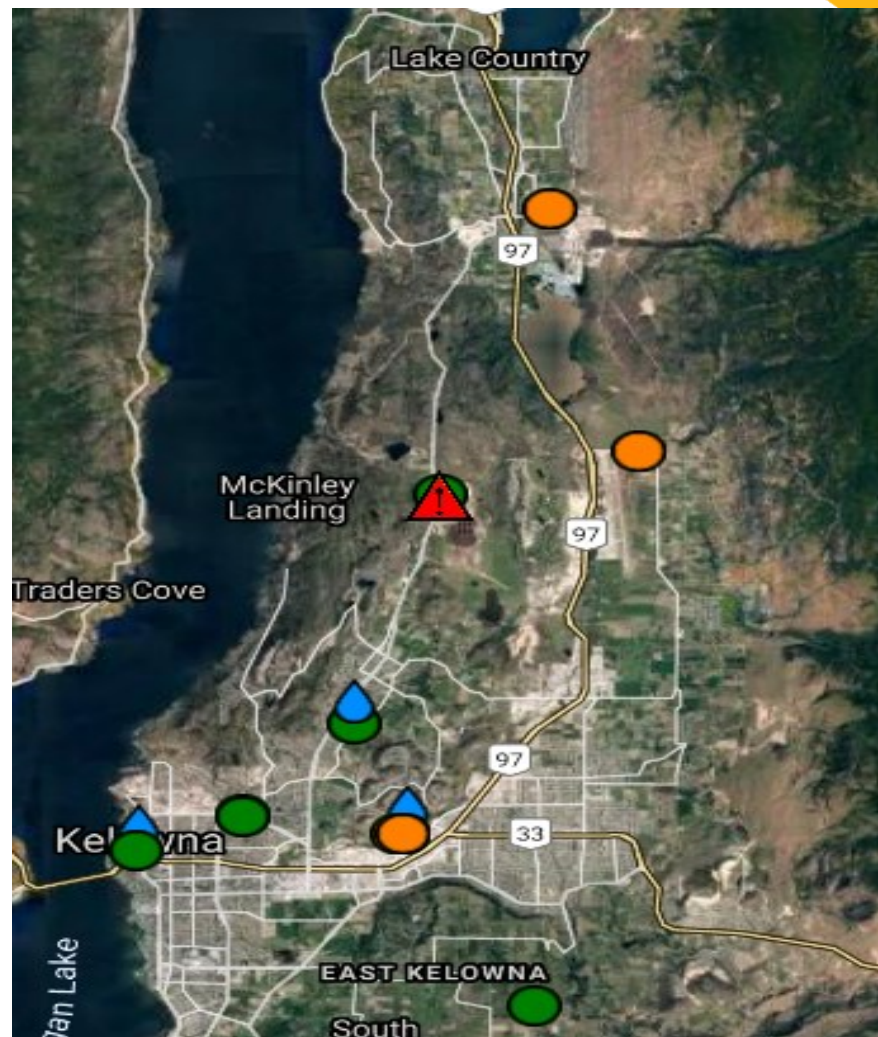
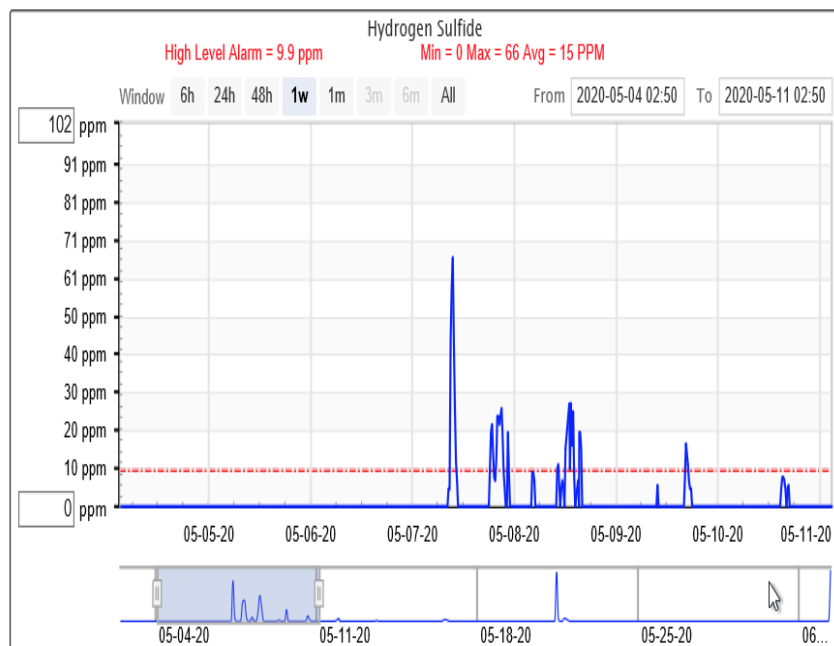
# INNOVATION AND TECHNOLOGY

## Smart Covers

accessible information, portable units



# INNOVATION AND TECHNOLOGY



# UTILITY RATES

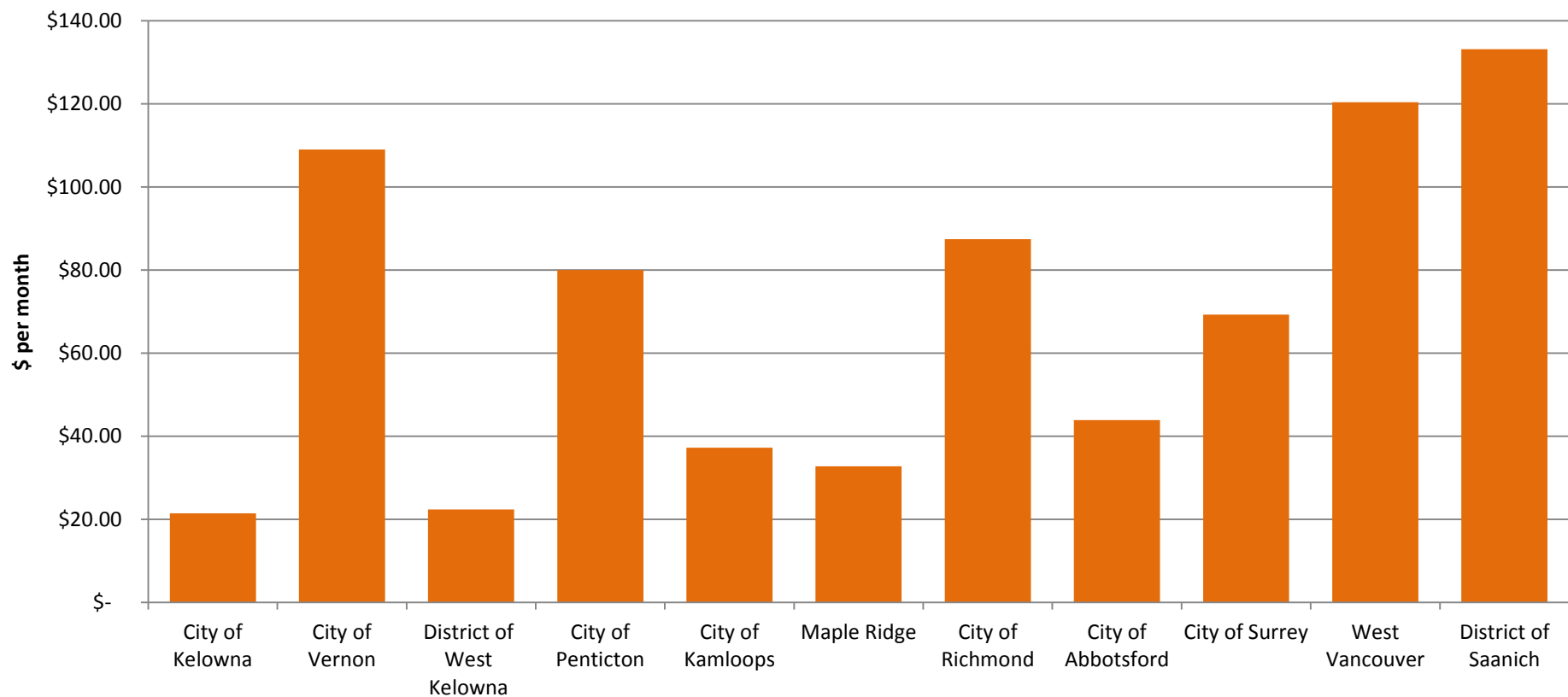
Wastewater utility financially healthy

3% annual increase proposed



# UTILITY RATES

## 2020 SFD Monthly Sewer Rates





# ***QUESTIONS?***

FOR MORE INFORMATION, VISIT [KELOWNA.CA.](http://kelowna.ca)