

LOST CREEK PARK



A Park for Lost Creek!



A Park for Lost Creek!

photo by taceyphotography@gmail.com

Lost Creek Park Initiative

A group of Lost Creek residents is working to get the Lost Creek Park space moved to Priority One with the City of Kelowna, ensuring that it will get built in 2017. To do that we need to secure a portion of the funding for the park by early

The Lost Creek Park Committee are a group of Lost Creek Residents who are volunteering our time and efforts to get our local park built. If you have any questions or comments about the park and the process please contact the Lost Creek Park Committee.

Vision for the Park:

Our vision for Lost Creek Park is to service the diverse needs of the community. The park will offer an attractive feature to service families and foster community development. Some features we aim for:

- ~ a multi-demographic and accessible park that targets the use for small children, youth, active adults and seniors.
- ~ a dynamic play environment that includes a playground, sport field, natural play features and fitness equipment.
- ~ to utilize the natural topography and environment, native vegetation and earth elements already present, and to encourage Natural Play

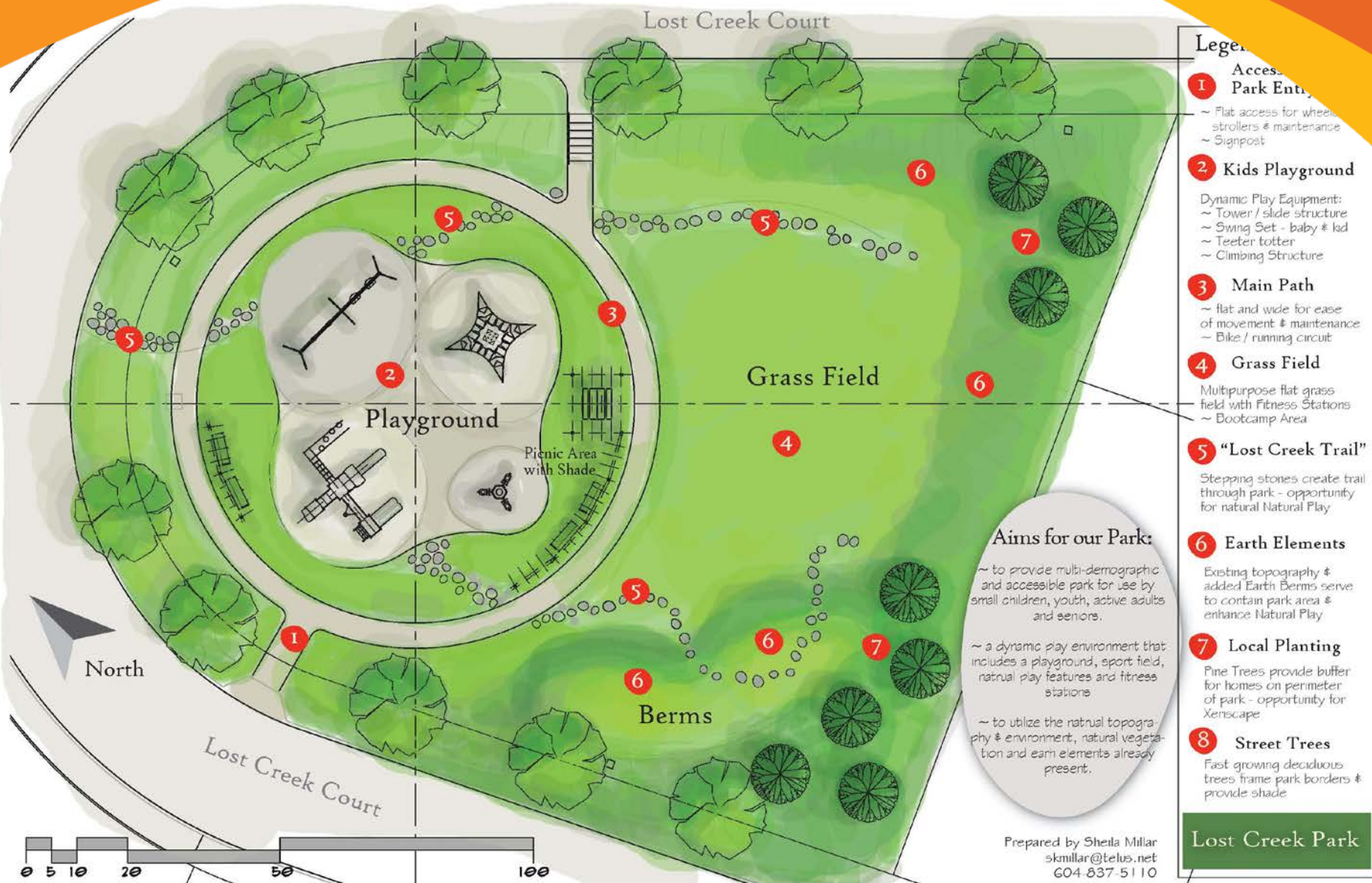
Contact Information:

If you have any questions or comments about the park and the process please contact the Lost Creek Park Committee.

by email: c/o Mananne Evashuk at mevashuk@shaw.ca

On Facebook please join the Lost Creek Neighbours Group for current information and updates!

Lost Creek Park





Innovative Design &
Elements of Natural Play



Xeriscaping



Lost Creek Park Key Features



Dynamic
Playground
Equipment
ages 0-12+



Accessibility



Flexible Usage



Use of Natural
Topography

Please note that the designs and ideas represented here are Conceptual only, and not intended for construction.

Lost Creek Park



I

Lost Creek Trail

Stepping Stones make fun path to tie together all the parts of the park & encourage NATURAL PLAY



3



Berms

Existing & added Grassy berms define the landscape & provide EARTH ELEMENTS for NATURAL PLAY

2

Xeriscape

Landscaping with the existing environment

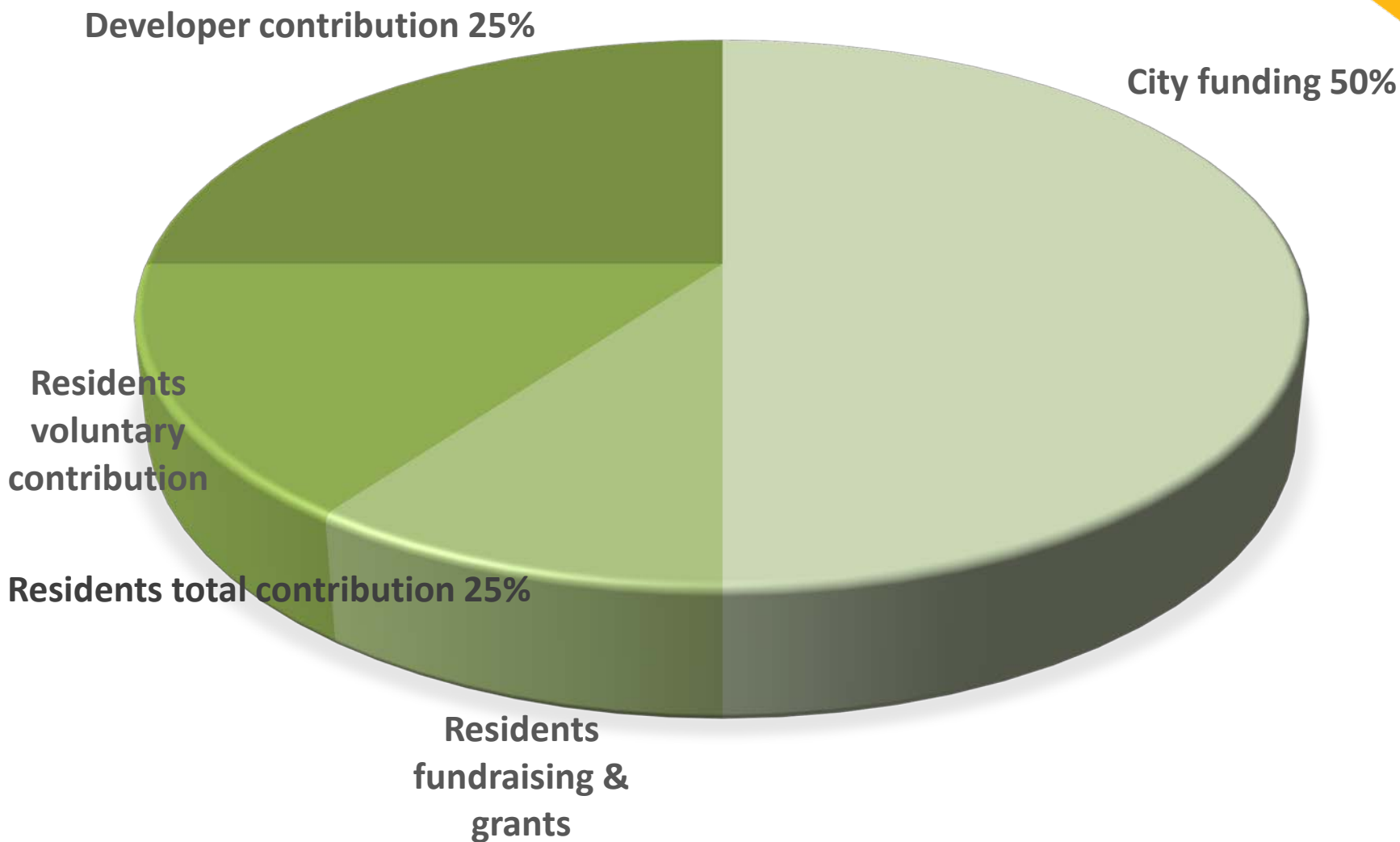


Lost Creek Trail

Earth Elements &
The Environment -
Natural Play Reference

Lost Creek Park

PARK DEVELOPMENT COSTS



- **Partnership details developed with neighbourhood group and developer**
- **Proposal assessed with other parks projects for priority in 2017 Capital Budget submission**
- **2017 Capital Budget approval**
- **Fundraising, grant applications and voluntary contributions pursued by neighbourhood group**
- **Concept design and public consultation completed by City staff**



Innovative Design &
Elements of Natural Play



Xeriscaping



Concept Plan



Dynamic
Playground
Equipment
ages 0-12+



Lost Creek Park Key Features



Accessibility



Flexible Usage



Use of Natural
Topography

Please note that the designs and ideas represented here are Conceptual only, and not intended for construction.

Lost Creek Park