



photo by taceyphotography@gmail.com

Lost Creek Park Initiative

A group of Lost Creek residents is working to get the Lost Creek Park space moved to Priority One with the City of Kelowna, ensuring that it will get built in 2017. To do that we need to secure a portion of the funding for the park by early

The Lost Creek Park Committee are a group of Lost Creek Residents who are volunteering our time and efforts to get our local park built. If you have any questions or comments about the park and the process please contact the Lost Creek Park Committee.

Vision for the Park:

Our vision for Lost Creek Park is to service the diverse needs of the community. The park will offer an attractive feature to service families and foster community development. Some features we aim for:

- ~ a multi-demographic and accessible park that targets the use for small children, youth, active adults and seniors.
- ~ a dynamic play environment that includes a playground, sport field, natural play features and fitness equipment.
- ~ to utilize the natural topography and environment, native vegetation and earth elements already present, and to encourage Natural Play

Contact Information:

If you have any questions or comments about the park and the process please contact the Lost Creek Park Committee.

by email: c/o Marianne Evashuk at mevashuk@shaw.ca

On Facebook please join the Lost Creek Neighbours Group for current information and updates!

Lost Creek Park



Legend:

- 1 Accessable Park Entry**
~ Flat access for wheelchairs, strollers & maintenance
~ Signpost
- 2 Kids Playground**
Dynamic Play Equipment:
~ Tower / slide structure
~ Swing Set - baby & kid
~ Teeter totter
~ Climbing Structure
- 3 Main Path**
~ flat and wide for ease of movement & maintenance
~ Bike / running circuit
- 4 Grass Field**
Multipurpose flat grass field with Fitness Stations
~ Bootcamp Area
- 5 "Lost Creek Trail"**
Stepping stones create trail through park - opportunity for natural Natural Play
- 6 Earth Elements**
Existing topography & added Earth Berms serve to contain park area & enhance Natural Play
- 7 Local Planting**
Pine Trees provide buffer for homes on perimeter of park - opportunity for Xeriscape
- 8 Street Trees**
Fast growing deciduous trees frame park borders & provide shade

Aims for our Park:

- ~ to provide multi-demographic and accessible park for use by small children, youth, active adults and seniors.
- ~ a dynamic play environment that includes a playground, sport field, natrual play features and fitness stations
- ~ to utilize the natrual topogra-phy & environment, natural vegeta-tion and eath elements already present.

Prepared by Sheila Millar
skmillar@telus.net
604-837-5110

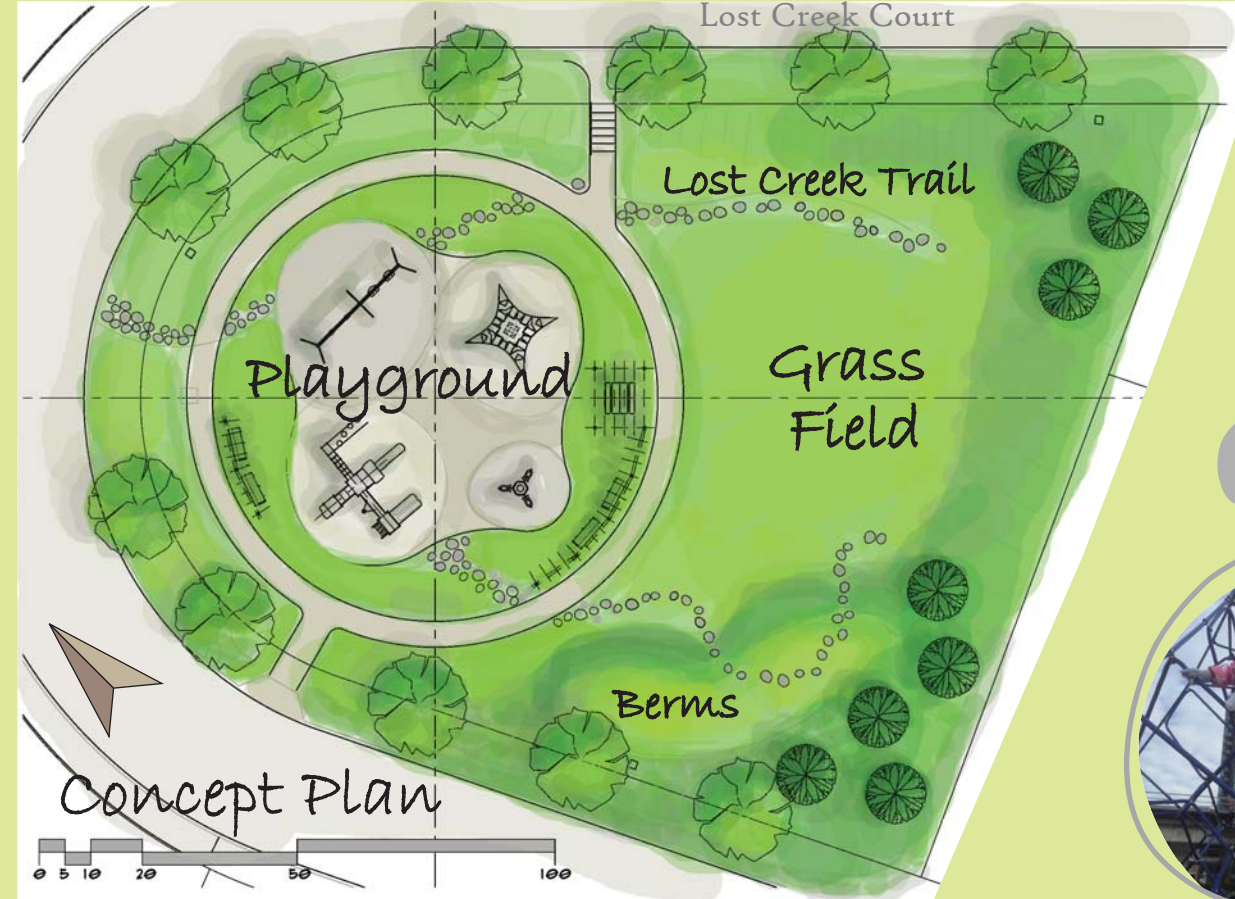
Lost Creek Park



Innovative Design & Elements of Natural Play



Xeriscaping



Lost Creek Park Key Features



Dynamic
Playground
Equipment
ages 0-12+



Accessibility



Flexible Usage



Use of Natural
Topography

Please note that the designs and ideas represented here are Conceptual only, and not intended for construction.



I

Lost Creek Trail

Stepping Stones make fun path to tie together all the parts of the park & encourage NATURAL PLAY



Berms

Existing & added Grassy berms define the landscape & provide EARTH ELEMENTS for NATURAL PLAY

2



Xeriscape

Landscaping with the existing environment



Lost Creek Trail

Earth Elements & The Environment - Natural Play Reference

Lost Creek Park



Multi-Play Structure with Slides

I

With elements for young kids
and for older kids



OR Awesome Saucer Swings

2

Swing Set

x2 Bucket Seat
Swings for little kids +
x2 Sling Seats for older kids



Forest Sava

4

Climbing Structure

Fun focus element for Park



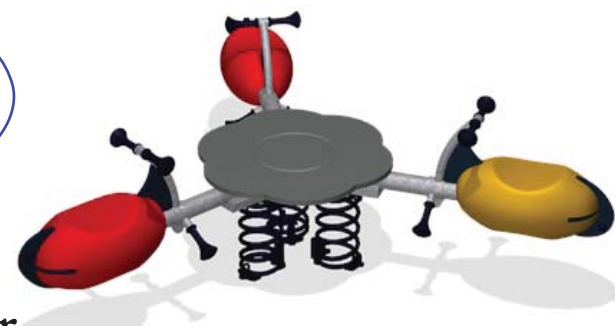
5

Fitness Stations
for all ages



Teeter Totter

3



*All equipment shown are suggested
categories of equipment only!
Strictly for budgeting purposes -
final choices will be made in future.

Kids Playground

Suggested Equipment

Lost Creek Park