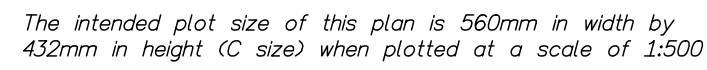


PLAN EPP100243

BCGS 82E.083



(All distances are in metres)

LEGEND

- Integrated Survey Area No. 4, City of Kelowna,
NAD83 (CSRS) 4.0.0.BC.1

Grid bearings are derived from GNSS observations and are referred to the central meridian of UTM Zone 11.

The UTM coordinates and estimated absolute accuracy are derived from Real-time GNSS survey ties to geodetic control monuments 75H2439 and 02H2365 from Leica Smartnet station ID 4005.

This plan shows horizontal ground-level distances unless otherwise specified. To compute grid distances, multiply ground-level distances by the average combined factor of 0.9999027 which has been derived from geodetic control monuments 75H2439 and 02H2365.

CIVD 28 (HTV2.0)

Note: The coordinates and estimated absolute accuracies shown on this plan are a result of an independent and accurate GNSS survey and do not represent official published coordinates.

GCM 75H2439
UTM Zone 11 coordinates
Datum: NAD83(CSR) 4.0.0.BC.1
UTM northing: 5525870.137
UTM easting: 325790.330
Estimated Absolute Accuracy: 0.02m.

GCM 02H2365
UTM Zone 11 coordinates
Datum: NAD83(CSR) 4.0.0.BC.1
UTM northing: 5525851.327
UTM easting: 326795.520
Estimated Absolute Accuracy: 0.02m.

This plan lies within the Regional District of Central Okanagan.

The field survey represented by this plan was completed on the 29th day of January, 2020.

Robert T. Macdonald, BCLS 873

RUNNALLS DENBY
british columbia land surveyors

259A Lawrence Avenue Phone: (250)763-7322
Kelowna, B.C. Fax: (250)763-4413
V1Y 6L2 Email: rob@runnallsdenby.com

DWG. No.: 14978 ROAD CLOSURE 2 FILE: 14978