

# CITY COUNCIL PRESENTATION

March 16, 2020



**Officer In Charge  
Supt. Brent Mundle  
Kelowna RCMP**

# Crime Reduction Strategy

## GOAL #1

PREVENT CRIME BEFORE IT OCCURS THROUGH A PROACTIVE APPROACH

## GOAL #2

TO WORK WITH PARTNER AGENCIES FOR MORE EFFECTIVE POLICING

## GOAL #3

TO MAXIMIZE THE EFFECTIVENESS OF RESOURCES USING AN  
INTELLIGENCE-LED MODEL

## GOAL #4

TO EFFECTIVELY COMMUNICATE PUBLIC SAFETY

# GOAL #1

## TAKING A PROACTIVE APPROACH TO CRIME

- ❖ Traffic Initiatives
- ❖ Community Policing Update
- ❖ Foot Patrol Team



# GOAL #1

## TAKING A PROACTIVE APPROACH TO CRIME (CONT'D)

### Significant Investigations

- Community Safety Unit;
- Street Enforcement Team / Target Team / Drug Unit;
- General Investigation Section;
- Serious Crime Unit

## GOAL #2

### TO WORK WITH PARTNER AGENCIES FOR MORE EFFECTIVE POLICING

- ❖ Child Advocacy Center (CAC)
- ❖ Kelowna Outreach & Support Table (KOaST)
- ❖ Police and Crisis Team (PACT)
- ❖ CCTV Camera Registry Pilot
- ❖ Central Okanagan Crime Stoppers

## GOAL #2

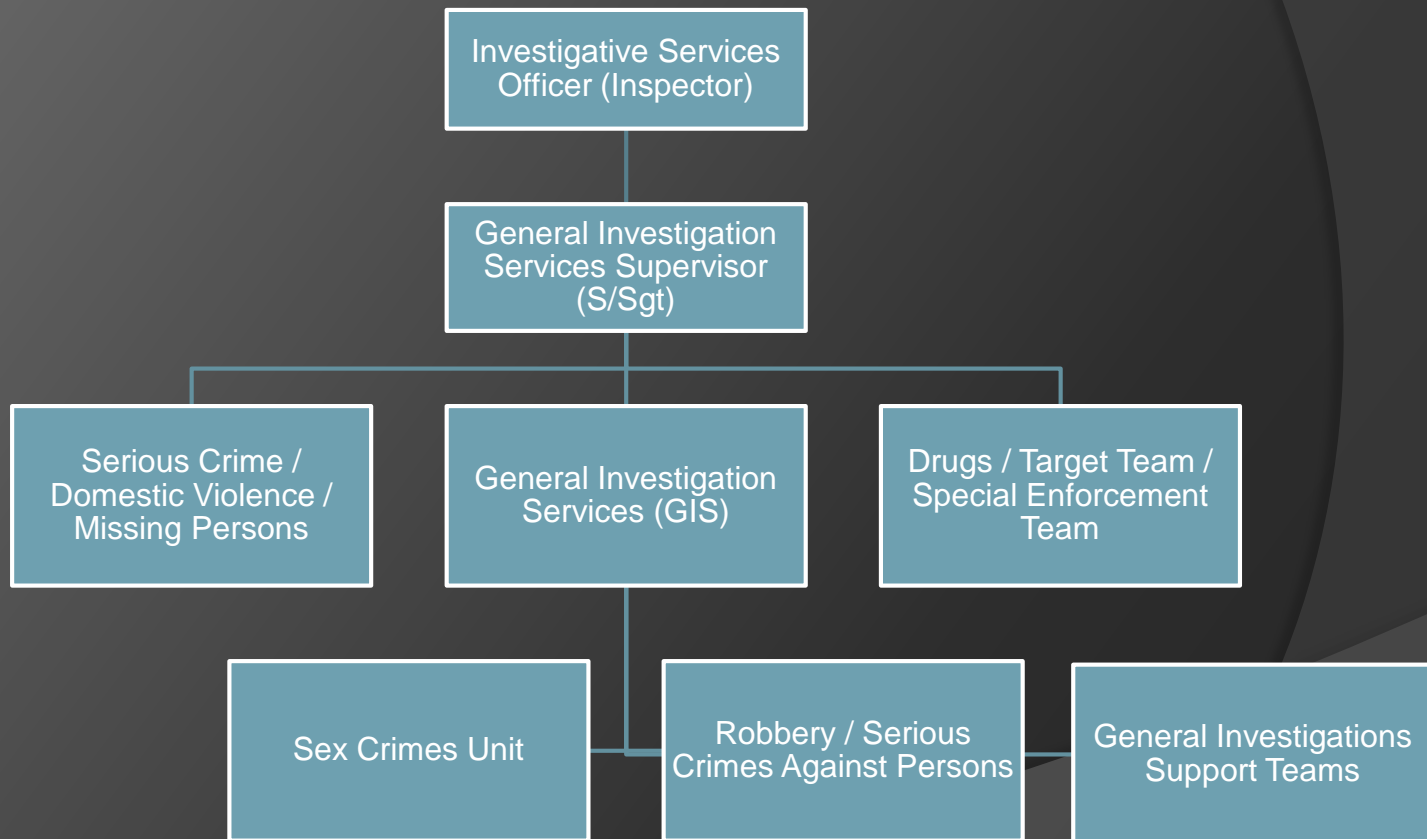
### TO WORK WITH PARTNER AGENCIES FOR MORE EFFECTIVE POLICING

- ❖ Prolific Offender Monitoring Program
- ❖ Restorative Justice
- ❖ Property Standard Compliance Team
- ❖ Temporary Overnight Sheltering

# GOAL #3

## TO MAXIMIZE THE EFFECTIVENESS OF RESOURCES USING AN INTELLIGENCE-LED MODEL

### ❖ Investigative Services Re-Organization



# GOAL #3

## TO MAXIMIZE THE EFFECTIVENESS OF RESOURCES USING AN INTELLIGENCE-LED MODEL

### ❖ New Resource Deployment

- 6 Community Safety Unit (incl. 2 additional foot patrol)
- 4 General Investigation Support Team (GIST)
- 1 School Resource Officer

### ❖ On-Line Crime Reporting Tool

### ❖ Critical Incident Stress Management Team



## GOAL #3

### TO MAXIMIZE THE EFFECTIVENESS OF RESOURCES USING AN INTELLIGENCE-LED MODEL (CONT'D)

#### ❖ COMPSTAT

- Monthly meetings with partners and stakeholders;
- Highlights criminally active offenders for targeted enforcement during specific periods;
- Identified offenders are assigned to specific units and /or general duty for enforcement;
- These efforts result in targeted individuals being apprehended at a higher rate.

# Offender Management

For the purposes of targeted enforcement, Kelowna detachment differentiates individuals who tend to drive crime statistics.

- **Priority Offender – targeted in Compstat periods**
  - individuals who may not show up statistically in a negative contact frequency count, who are identified by current intelligence to be criminally active.
- **Prolific Offenders - targeted by Target Team/ Community Safety Unit**
  - Individuals with an established pattern of persistent of Criminal Code or CDSA offences who are identified by current intelligence to be criminally active; and assessed by police and partner agencies as medium to high risk to re-offend.
- **Chronic Offenders – targeted by Community Safety Unit**
  - individuals are heavy consumers of police time (e.g. vagrancy, public intoxication, cause disturbance), but not typically due to criminal behaviour. They may be dealing with addiction or mental health issues and are best dealt with in a multi-agency case management approach.

# GOAL #4

## LEVERAGING EFFECTIVE COMMUNICATIONS

### ❖ New Media Relations Officer

### ❖ Community Relations

- Bring Your Kids to Work Day;
- Christmas Cheer Campaign;
- Salvation Army Christmas Donations;
- Charity Volleyball Game with OKM;
- Cram the Cruiser...





# GOAL #4

## LEVERAGING EFFECTIVE COMMUNICATIONS (CONT'D)

Community Relations



Salvation Army Donations

Christmas Cheer Crew



# GOAL #4

## LEVERAGING EFFECTIVE COMMUNICATIONS (CONT'D)

Community Relations



Remembrance Day  
Celebrations - Rutland

Pink Shirt Day





# GOAL #4

## LEVERAGING EFFECTIVE COMMUNICATIONS CONT'D)

Community Relations

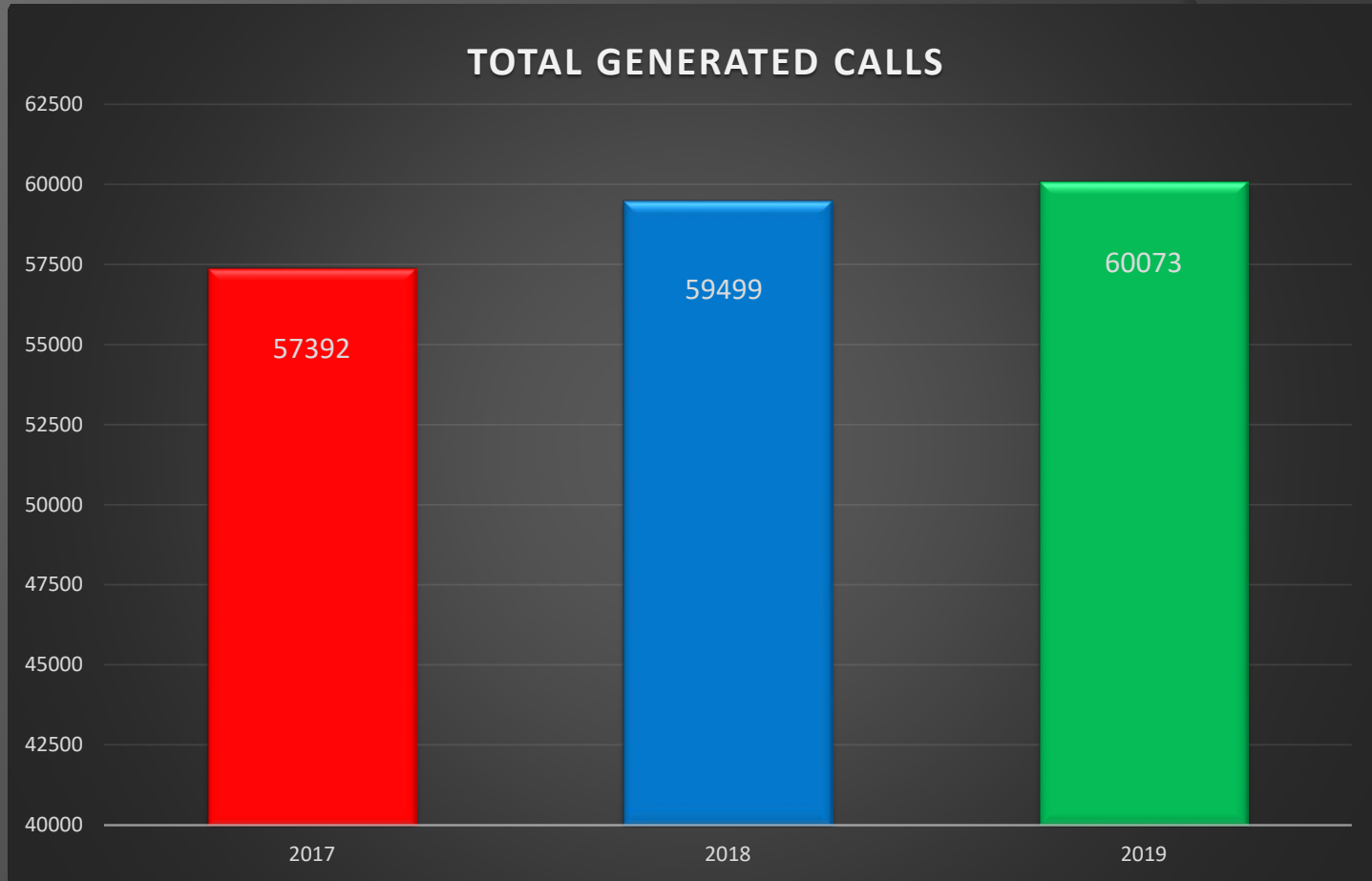
### ❖ Upcoming Events

- Police Motorcycle User Course June 1-12;
- Slow Down Move Over Campaign;
- RCMP Jean Minguy Memorial Youth Academy May 3-9;
- Canadian Police Canine Association Competition
  - September 10-13
  - “Cop Dogs for Kids”

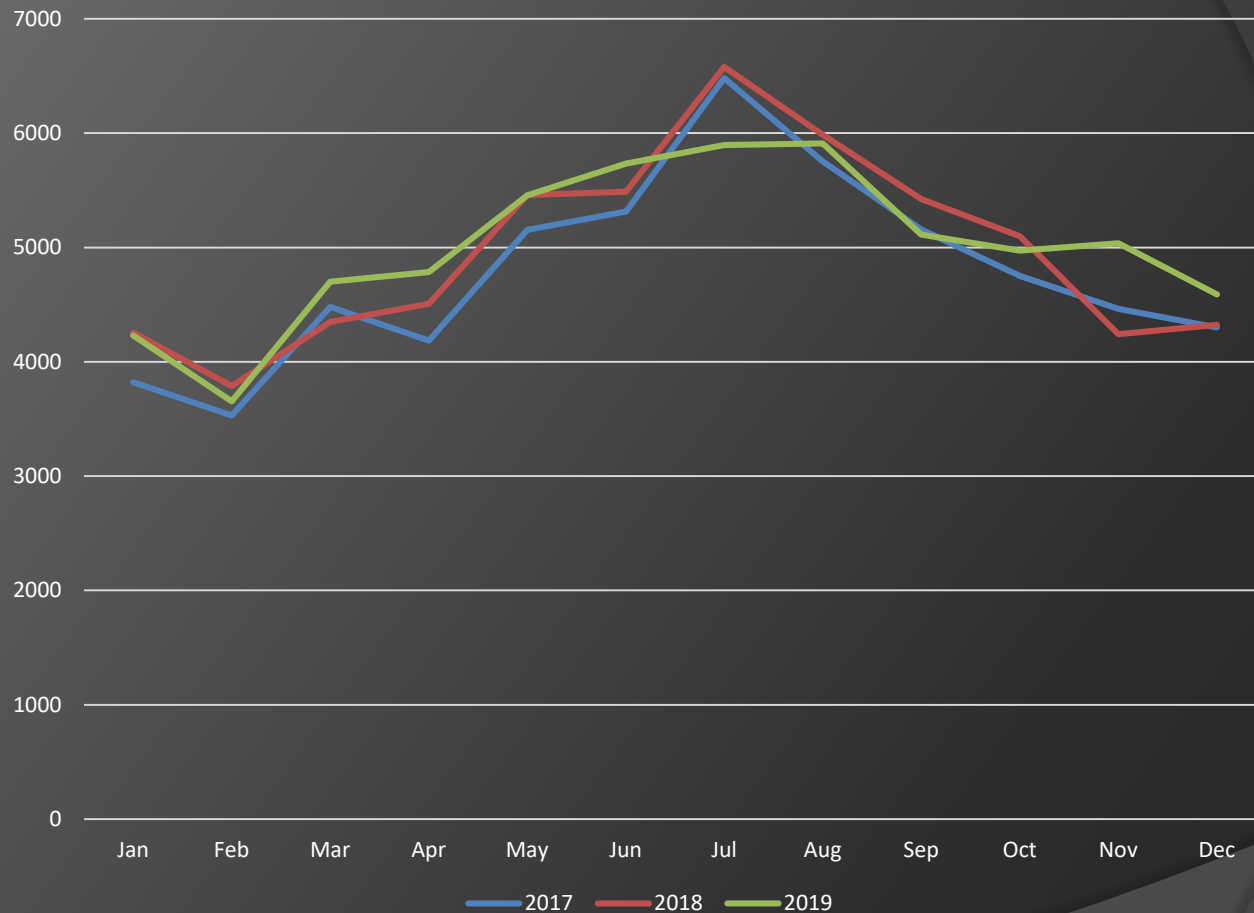


# ANNUAL RCMP CALLS FOR SERVICE

## CITY OF KELOWNA

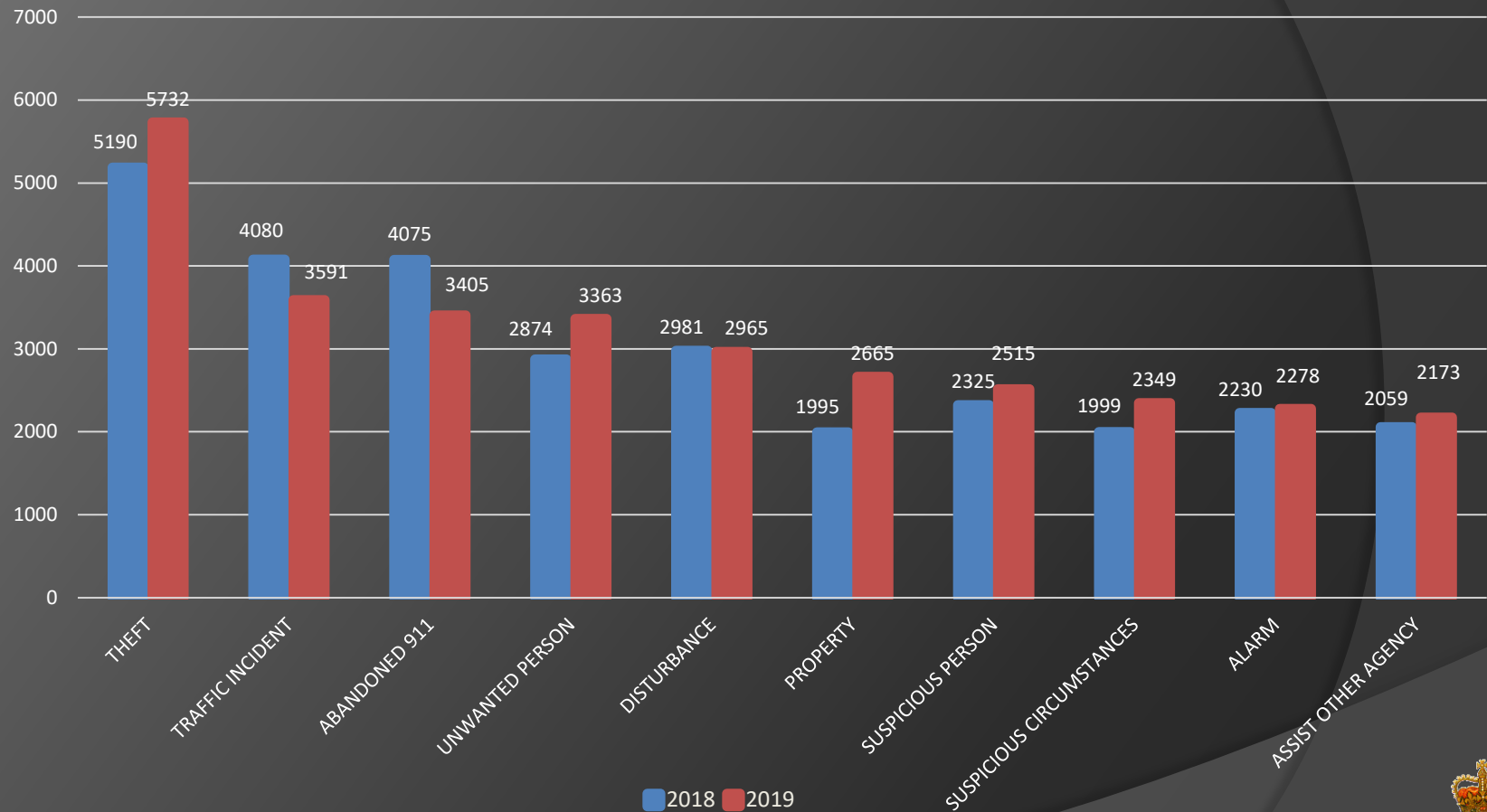


# CITY OF KELOWNA - 3 YEAR COMPARISON OF CALLS FOR SERVICE BY MONTH





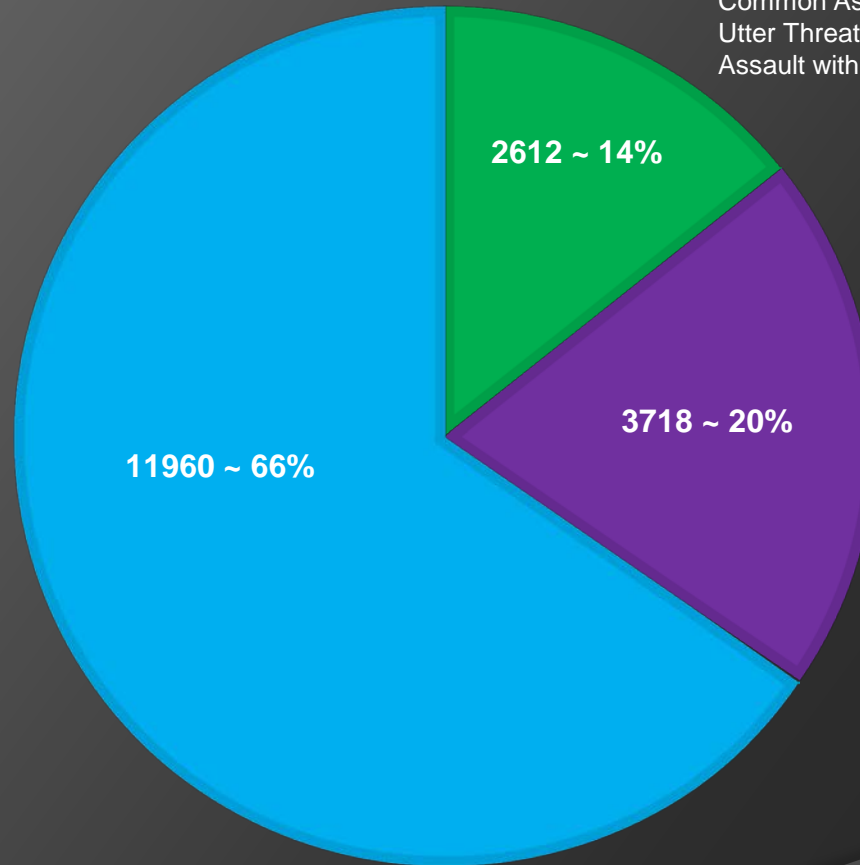
# CITY OF KELOWNA – TOP TEN CAD CALLS FOR SERVICE 2018 AND 2019 COMPARISON



# CITY OF KELOWNA

## 2019 CRIMINAL CODE OFFENCES

**TOP 3 PROPERTY CRIME TYPES:**  
Theft from MV Under \$5,000– 2,720  
Mischief Under \$5,000– 1,756  
Shoplifting Under \$5,000– 1,398



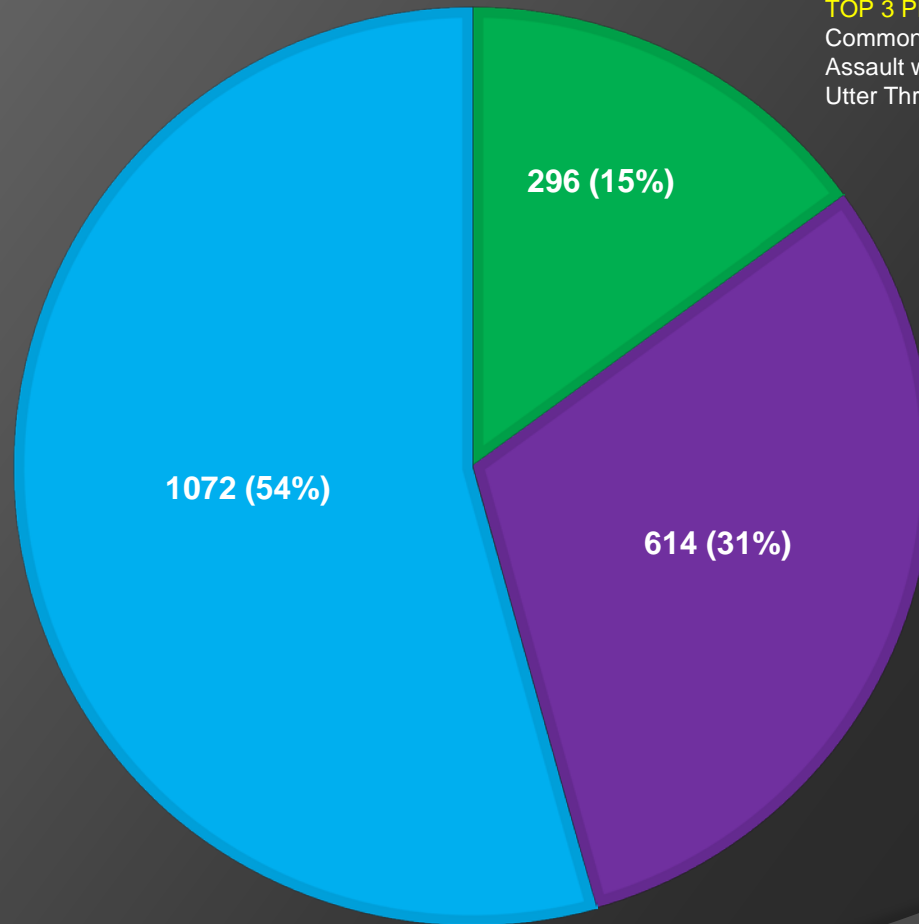
**TOP 3 PERSON CRIME TYPES:**  
Common Assault – 1,065  
Utter Threats – 521  
Assault with Weapon CBH - 264

**TOP 3 OTHER CC CRIME TYPES:**  
Cause Disturbance – 2,171  
Fail to Appear – 327  
Breach/Bail Violation – 274

■ PERSONS OFFENCES   ■ OTHER CC   ■ PROPERTY OFFENCES

# DOWNTOWN KELOWNA

## 2019 CRIMINAL CODE OFFENCES BY TYPE



### TOP 3 PROPERTY CRIME TYPES:

Mischief Under \$5,000– 275  
Theft from MV Under \$5,000– 175  
Shoplifting Under \$5,000– 103

### TOP 3 PERSON CRIME TYPES:

Common Assault – 142  
Assault with Weapon CBH - 53  
Utter Threats – 44

### TOP 3 OTHER CC CRIME TYPES:

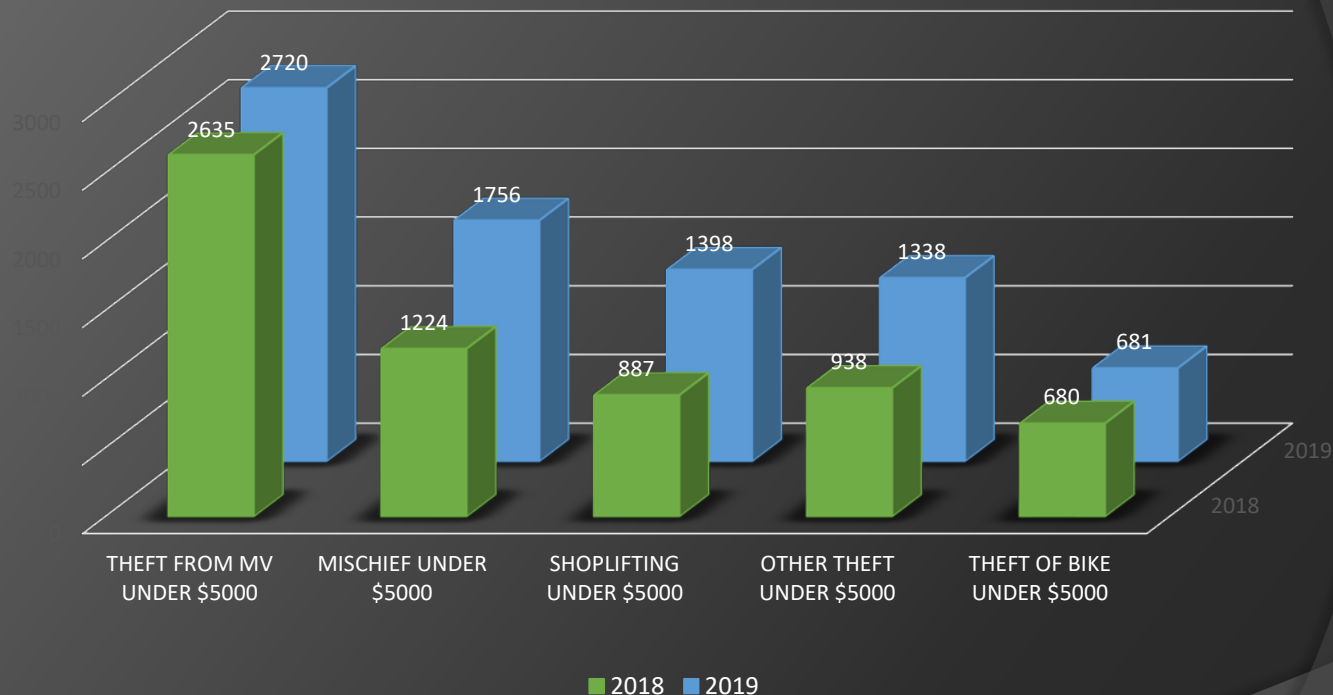
Cause Disturbance – 455  
Breach/Bail Violation – 46  
Breach OF Adult Probation – 27

■ PERSONS OFFENCES ■ OTHER CC ■ PROPERTY OFFENCES

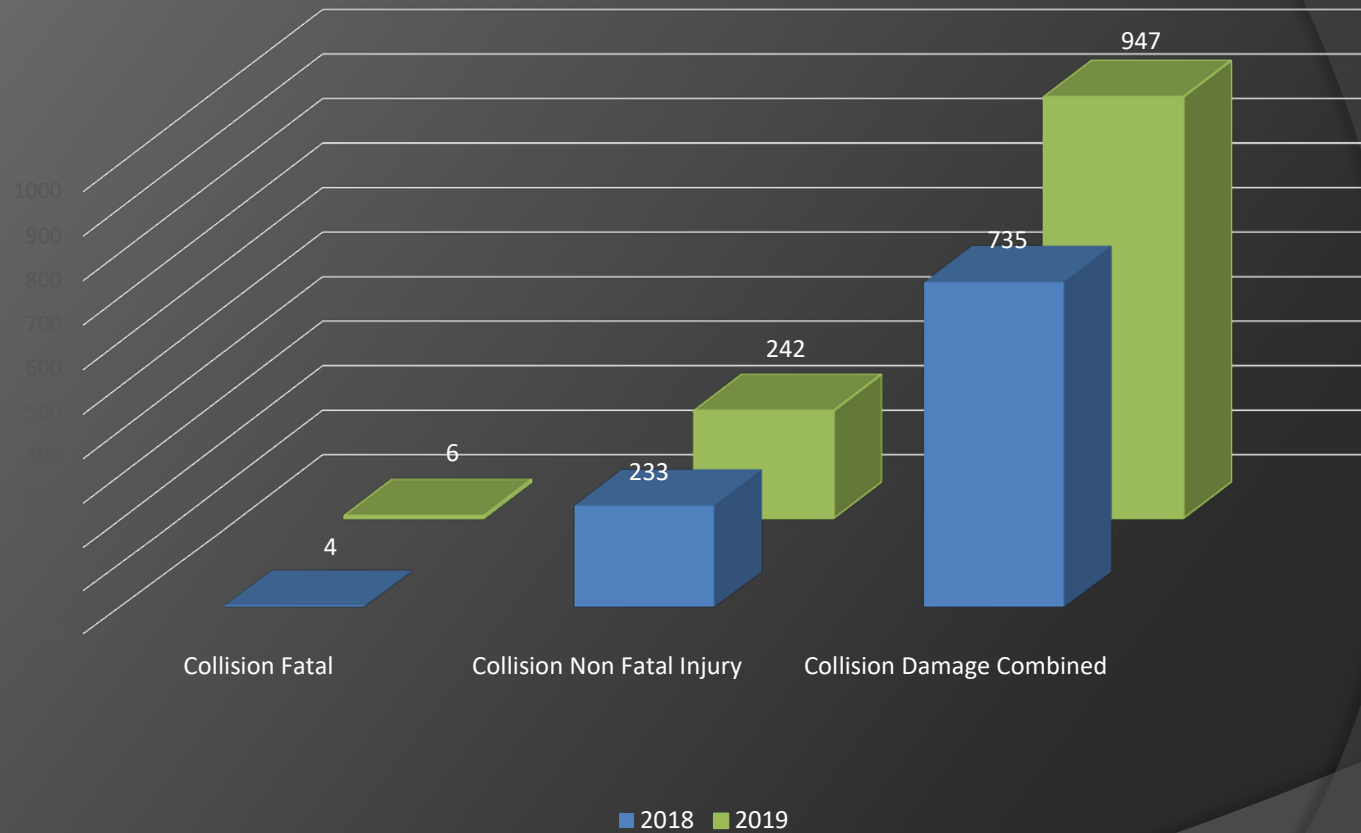
# CITY OF KELOWNA

## TOP 5 PROPERTY CRIME TYPES

### 2018 TO 2019 COMPARISON

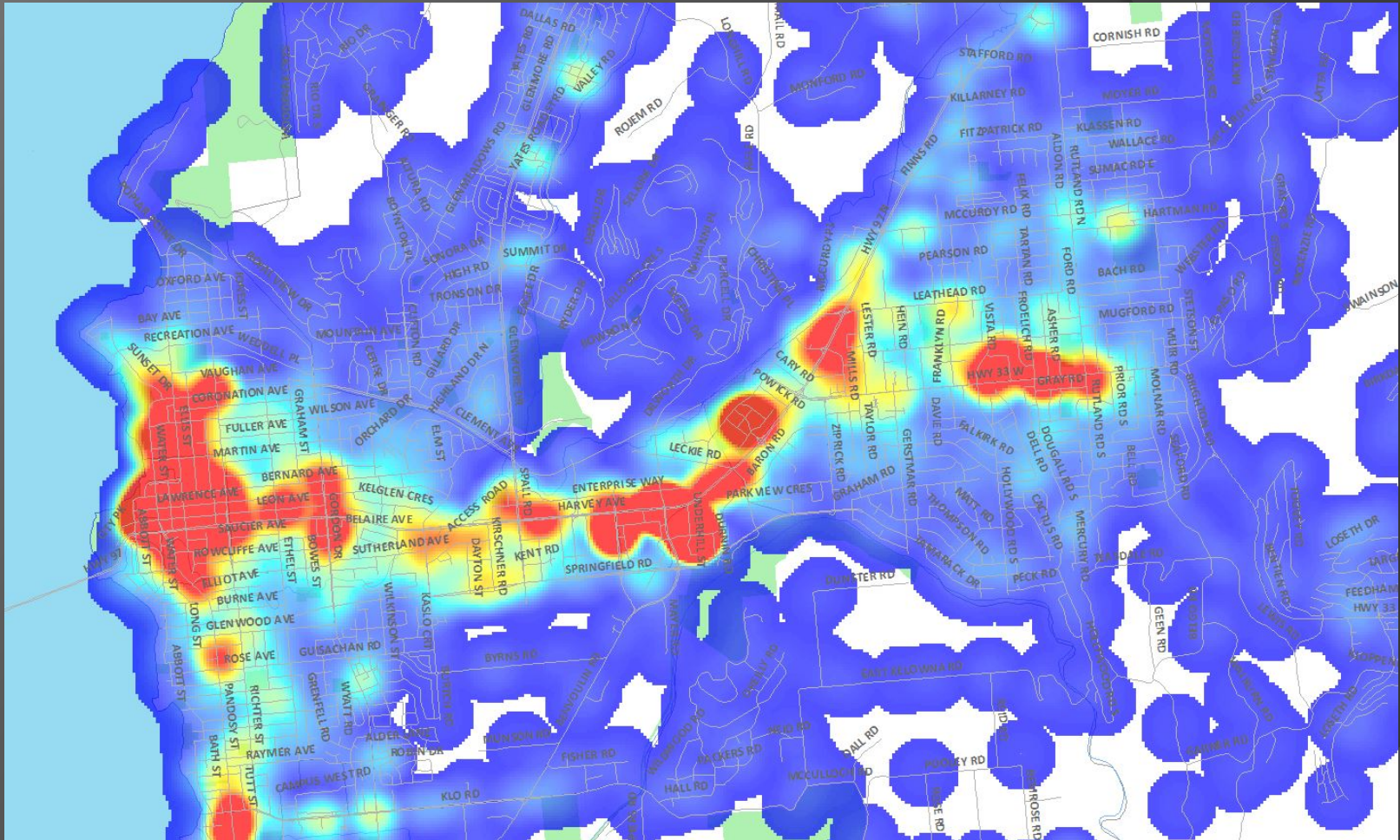


# CITY OF KELOWNA 2019 TRAFFIC COLLISIONS





# Property Crime Density Map 2019



# Early 2020 Crime Trends

## Significant increase in Break & Enters:

- multiple business smash & grabs throughout the city targeting electronics which are then used to commit frauds - several occurring per night in late December/ early January .
- increase in parkade break & enters targeting vehicles and quick grab items.
- break & enters into compounds – targeting generators and other smaller items.

# QUESTIONS?