

general notes

- total area of the space is 1177 sq.ft.
- maximum allowed travel distance is 30m; 15.8 m maximum travel achieved.

legend

	new door
	existing base building wall to remain
	existing base building door to remain
	downlight
	feature pendant light fixture
	general LED suspended light fixture
	security camera - system professionally designed and installed
	LED strip lighting
s.r.d	secure retail display
p.o.s	point of sales
pnc	24 hour panic button

1 floor plan
id 1.1 scale: 1/4" = 1'-0"

ATTACHMENT A

This forms part of application
Z19-0140

Planner Initials **HR**

City of Kelowna
DEVELOPMENT PLANNING



mojo
#101 583 yates rd
kelowna, bc

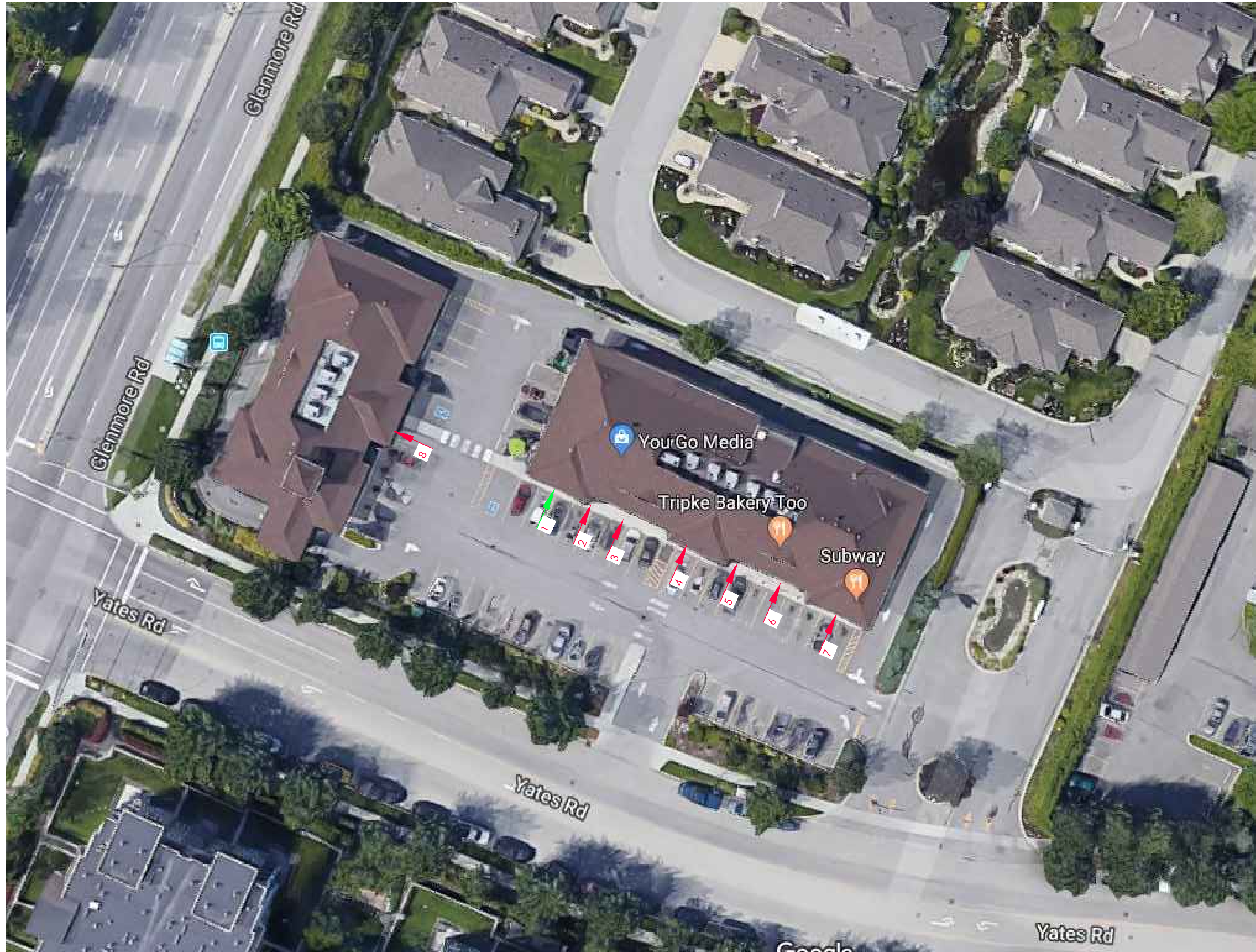
provincial application
floor plan

date nov. 25, 2019
scale 1/4" = 1'-0"
drawn by aj

2. issued for provincial application nov. 26, 2019
1. issued for client review nov. 05, 2019

- do not scale from drawings
- site verify all dimensions and information
- report any errors or discrepancies
- all work to conform to applicable codes & regulations
- drawings are published by hatch interior design - all rights reserved including rights of reproduction

id 1.1
sheet no.



legend	
	proposed entrance to 'Flora Recreational Cannabis'
	entrances to surrounding businesses
#	reference to neighbouring business' name

- neighbouring business names:
1. Mojo
 2. The Parlour Beauty + Shave
 3. Highlands Dentistry
 4. Pakwaan Restaurant
 5. Glenmore Optometry
 6. Tripke Bakery Too
 7. Subway
 8. Vacant

1 site plan
id 2.1 scale: nts



mojo
#101 583 yates rd
kelowna, bc

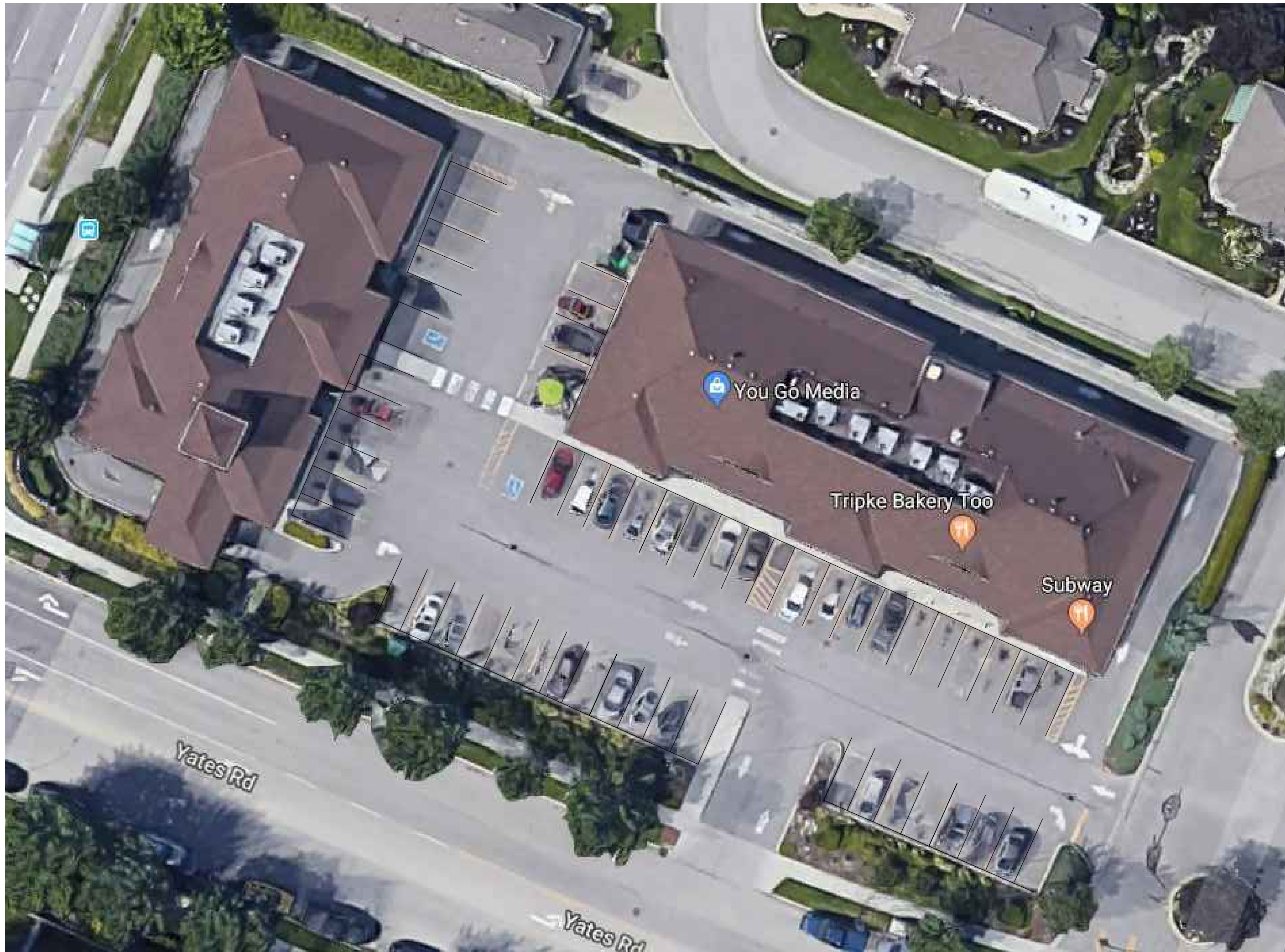
provincial application
site plan

date nov. 25, 2019
scale nts
drawn by aj

2. issued for provincial application nov. 26, 2019
1. issued for client review nov. 05, 2019

- do not scale from drawings
- site verify all dimensions and information
- report any errors or discrepancies
- all work to conform to applicable codes & regulations
- drawings are published by hatch interior design - all rights reserved including rights of reproduction

id 2.1
sheet no.



building area = 109.35 sq.m.
 parking = 2.2 spaces / 100 sq.m = 109.35 / 100 * 2.2 = 3 spaces
 53 parking spaces provided, shared among surrounding businesses.

1 parking plan
 id 3.1 scale: nts



mojo
 #101 583 yates rd
 kelowna, bc

provincial application
 parking plan

date nov. 25, 2019
 scale nts
 drawn by aj

2. issued for provincial application nov. 26, 2019
 1. issued for client review nov. 05, 2019

- do not scale from drawings
- site verify all dimensions and information
- report any errors or discrepancies
- all work to conform to applicable codes & regulations
- drawings are published by hatch interior design - all rights reserved including rights of reproduction

id 3.1
 sheet no.



can sign with black background.

MOJO name and address printed in contrasting colour on front for public view.

opaque white window vinyl

MOJO logo and age restriction.

no smoking sign

visible hours of operation

1 signage view
id 4.1 scale: nts



mojo
#101 583 yates rd
kelowna, bc

provincial application
signage

date nov. 25, 2019
scale nts
drawn by aj

2. issued for provincial application nov. 26, 2019
1. issued for client review nov. 05, 2019

- do not scale from drawings
- site verify all dimensions and information
- report any errors or discrepancies
- all work to conform to applicable codes & regulations
- drawings are published by hatch interior design - all rights reserved including rights of reproduction

id 4.1
sheet no.



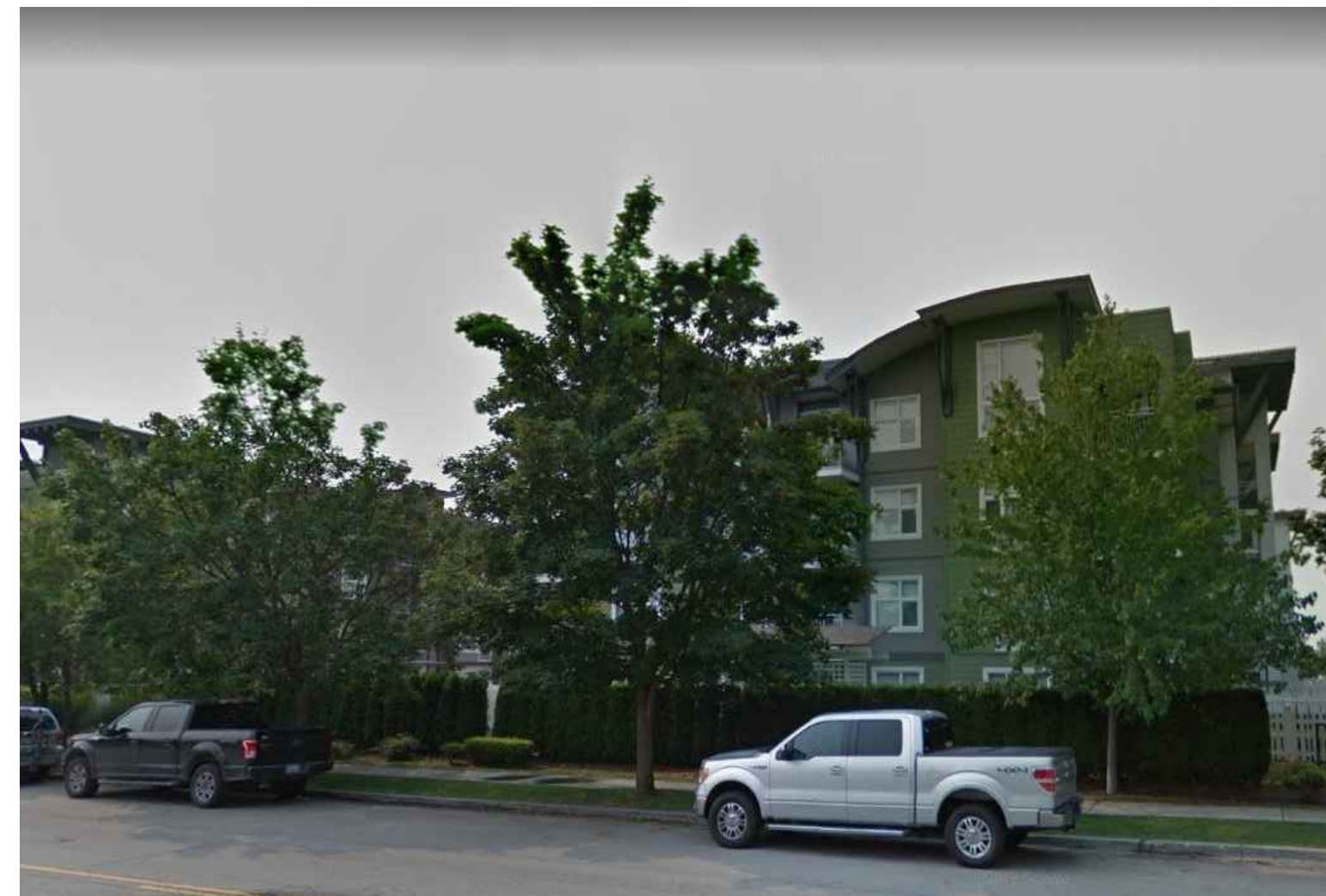
1 front facade
id 5.1 scale: nts



2 view to north west
id 5.1 scale: nts



3 back facade
id 5.1 scale: nts



4 view to south
id 5.1 scale: nts



mojo
#101 583 yates rd
kelowna, bc

provincial application
site photos

date nov. 25, 2019
scale nts
drawn by aj

2. issued for provincial application nov. 26, 2019
1. issued for client review nov. 05, 2019

- do not scale from drawings
- site verify all dimensions and information
- report any errors or discrepancies
- all work to conform to applicable codes & regulations
- drawings are published by hatch interior design - all rights reserved including rights of reproduction

id 5.1
sheet no.



1 view to the west
id 6.1 scale: nts



2 view to east
id 6.1 scale: nts



mojo
#101 583 yates rd
kelowna, bc

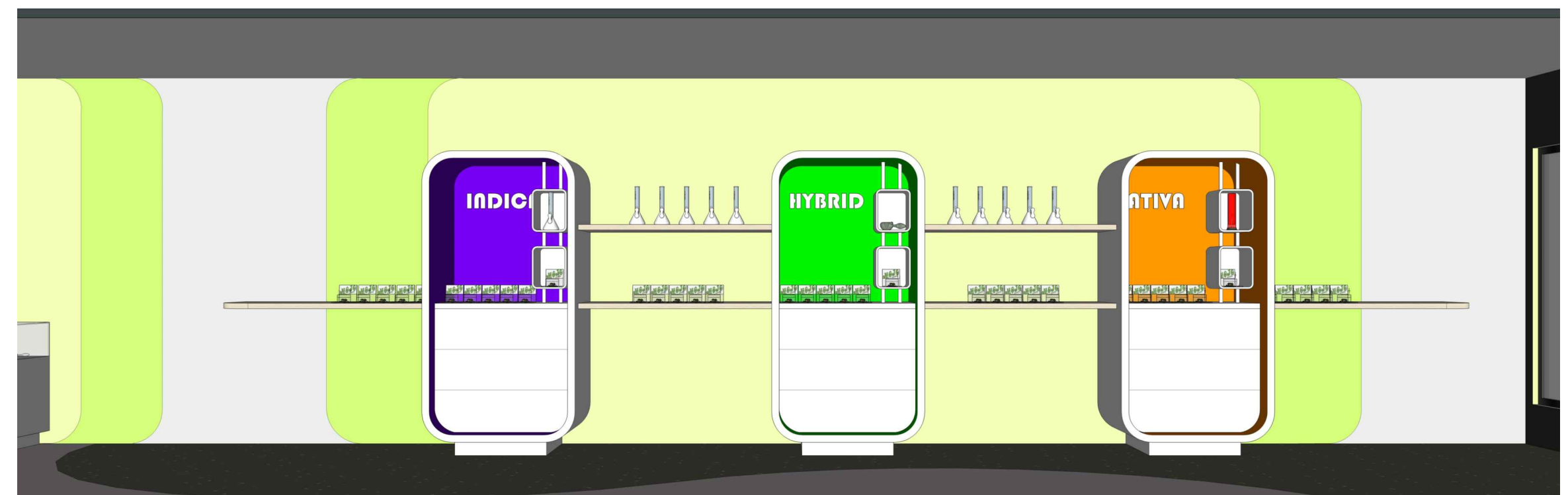
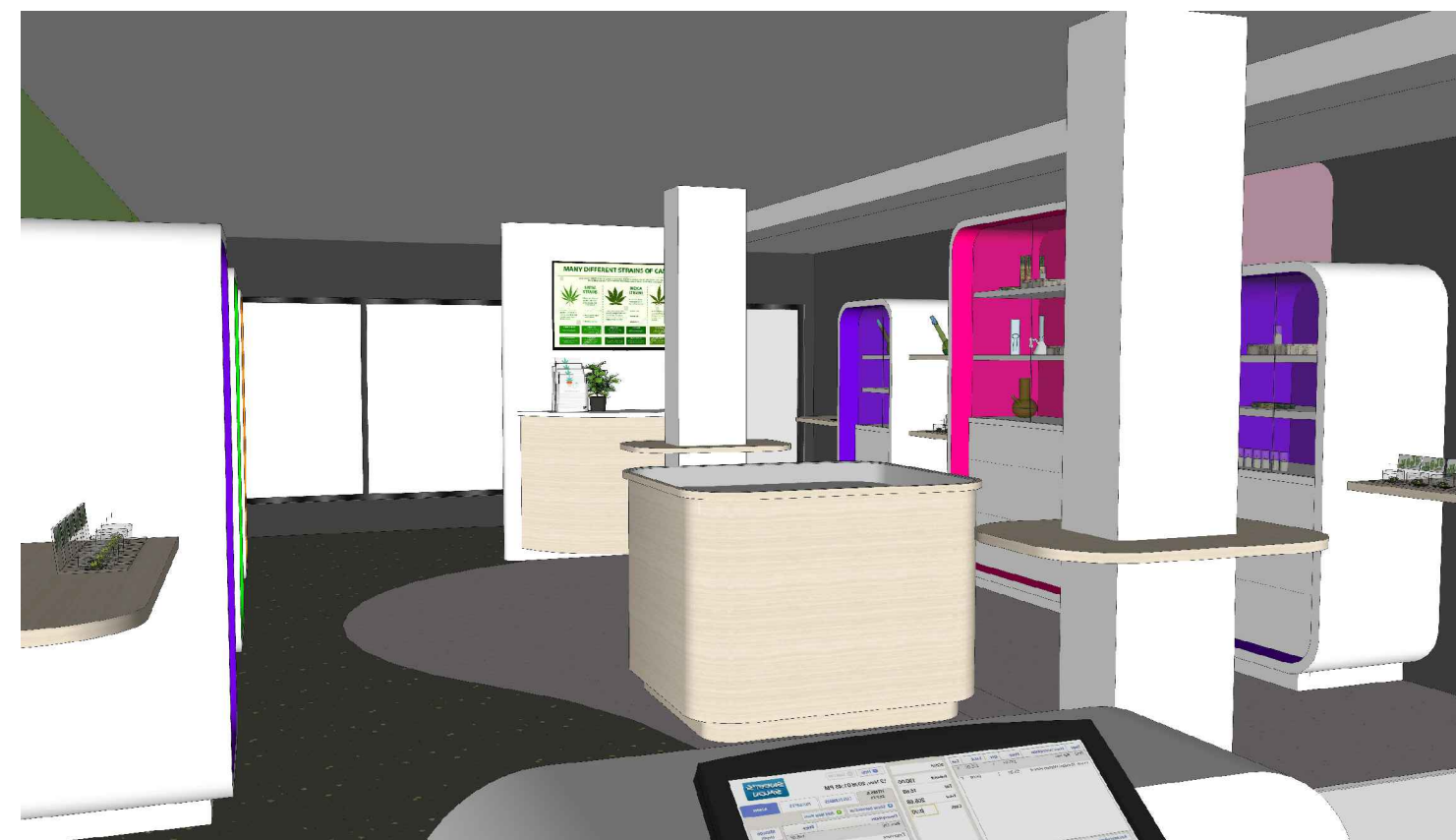
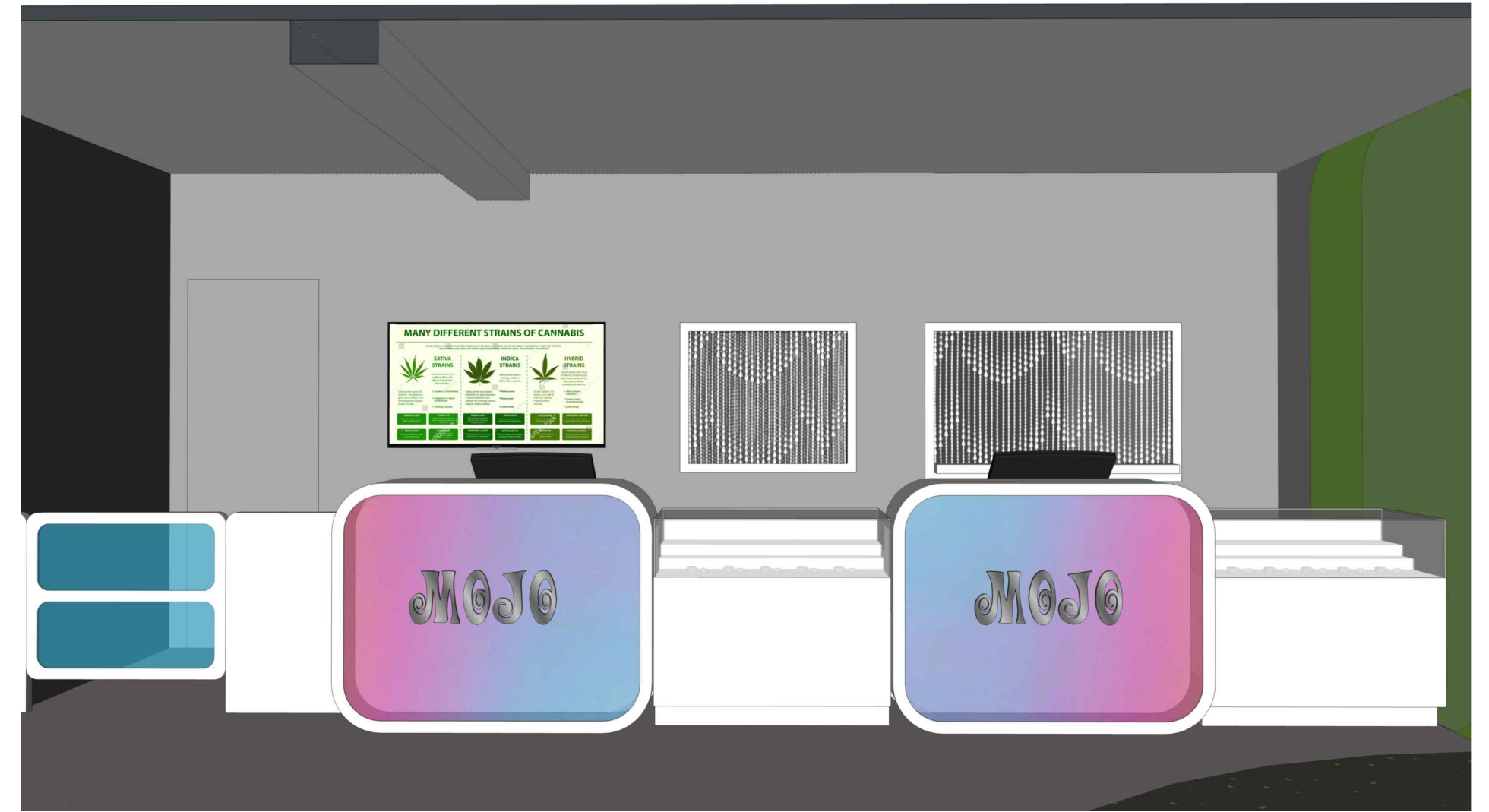
provincial application
site photos

date nov. 25, 2019
scale nts
drawn by aj

2. issued for provincial application nov. 26, 2019
1. issued for client review nov. 05, 2019

- do not scale from drawings
- site verify all dimensions and information
- report any errors or discrepancies
- all work to conform to applicable codes & regulations
- drawings are published by hatch interior design - all rights reserved including rights of reproduction

id 6.1
sheet no.



NOTE:

renderings depict design concept,
however may not reflect exact location.



mojo
#101 583 yates rd
kelowna, bc

provincial application
3D renderings

date nov. 25, 2019
scale nts
drawn by aj

1. issued for client review nov. 05, 2019
2. issued for provincial application nov. 26, 2019

- do not scale from drawings
- site verify all dimensions and information
- report any errors or discrepancies
- all work to conform to applicable codes & regulations
- drawings are published by hatch interior design - all rights reserved including rights of reproduction

id 7.1
sheet no.