

# MANAGEMENT PLAN

**FILE #** 3407115

**DID #:** 925148

**PURPOSE:** Commercial Moorage

**LEGAL DESCRIPTION:** Osoyoos div of Yale land district, all that unsurveyed Crown foreshore being part of the bed of Okanagan Lake and fronting on Lot 1 of District Lots 139, 4041, 4082 and 5199, Osoyoos Division of Yale District, Plan KAP46717 shown outlined on sketch containing 0.2945 hectares, more or less

The infrastructure at this location includes 65 m long dock with 4 fingers and pilings, as illustrated on Page 2 of this Management Plan.

Any future alterations or additions to the improvements will require our prior written consent.

You must not restrict or impede access over or on this site.

This document supersedes any earlier Management Plans. The signature of the Province's authorized representative is solely for the purpose of acknowledging the Province's acceptance of this document as the Management Plan for community and institutional purposes and does not represent a certification by the Province or its signatory of any factual content or acceptance of professional responsibility by the Province's signatory for any advice or analysis contained in this document.

ACCEPTED and SIGNED by City of Kelowna

This Management Plan has been approved by the Ministry of Forest, Lands, Natural Resource Operations and Rural Development :

\_\_\_\_\_  
Authorized Signatory

\_\_\_\_\_  
Authorized Signatory

PRINT NAME:

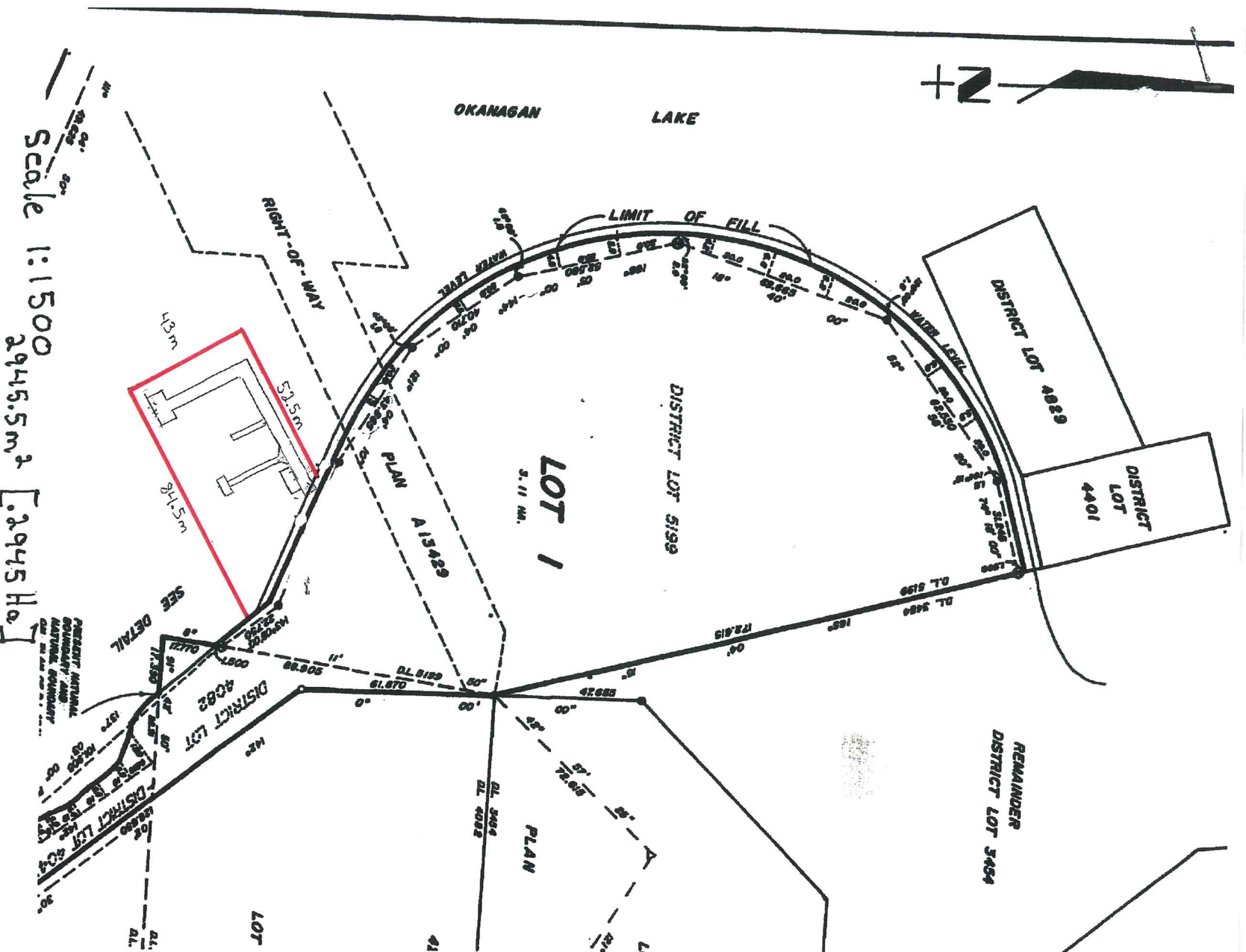
DATE:

DATE:

# MANAGEMENT PLAN

File: 3407115

Osoyoos div of Yale land district, all that unsurveyed Crown foreshore being part of the bed of Okanagan Lake and fronting on Lot 1 of District Lots 139, 4041, 4082 and 5199, Osoyoos Division of Yale District, Plan KAP46717 shown outlined on sketch containing 0.2945 hectares, more or less



Signed on behalf of  
City of Kelowna  
by a duly authorized signatory

HER MAJESTY THE QUEEN IN RIGHT  
OF THE PROVINCE OF BRITISH  
COLUMBIA,  
by its authorized representative

Date \_\_\_\_\_

Date \_\_\_\_\_