

URBAN CENTRES ROADMAP

Interim Report

Ross Soward, Planner Specialist



TRANSFORMING KELOWNA'S URBAN CENTRES



EXISTING

EARLY-STAGE URBAN CENTRE



FUTURE

ESTABLISHED URBAN CENTRE

A FRAMEWORK FOR CENTRE PLANNING

Urban Centres Roadmap

- Community Profiles
- Principles and Target for Urban Centre Plans
 - Urban centre best practices
- Land inventory and incentive strategy
- Prioritization matrix

Capri /
Landmark
Development
Plan

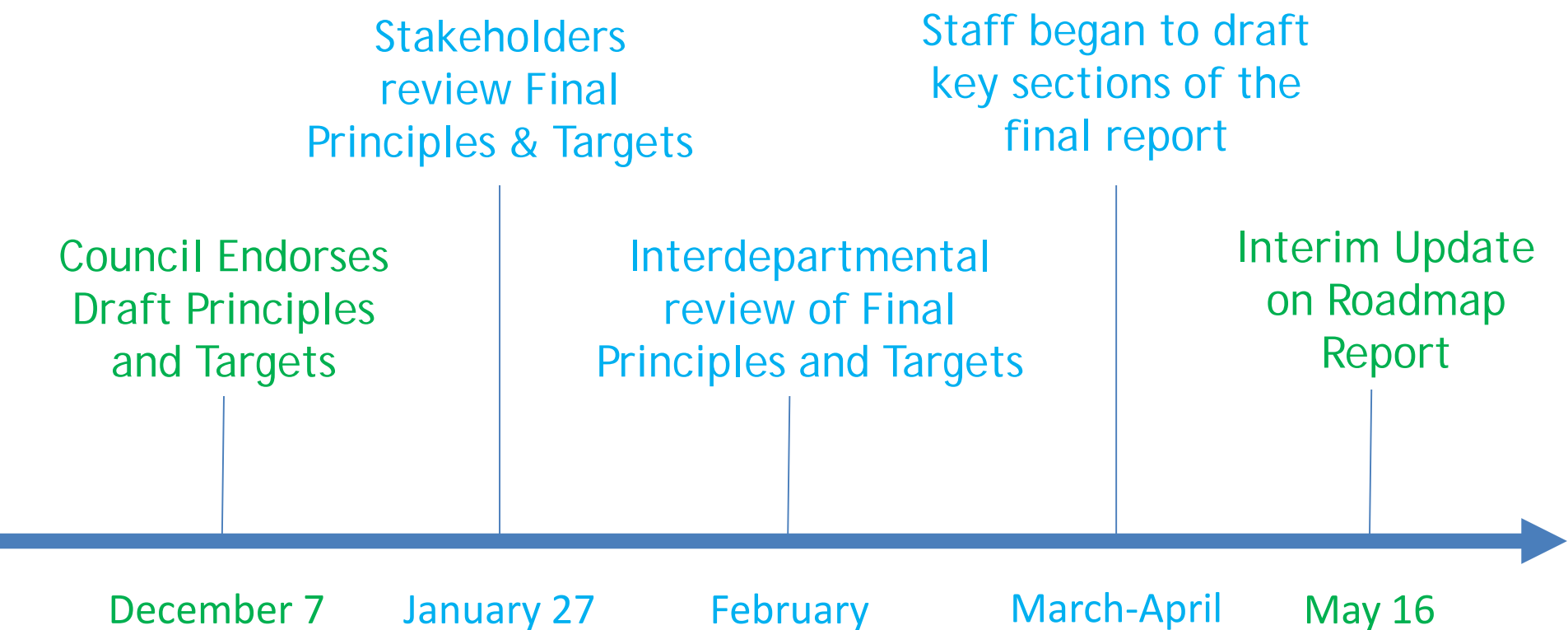
City Centre
(Downtown)
Development
Plan

Midtown
Development
Plan

Rutland
Development
Plan

South Pandosy
Development
Plan

RECENT PROJECT ACTIVITIES



URBAN CENTRES ROADMAP KEY ELEMENTS

1. The Theory of Urban Centre Change
2. Urban Centre Planning Prioritization Matrix

URBAN CENTRE THEORY OF CHANGE

- ▶ Urban Centres are always changing
- ▶ Three categories to define transformation

Early



Developing



Mature



EARLY STAGE URBAN CENTRE

- ▶ Not recognizable
- ▶ Low-density
- ▶ Concentration of employment



DEVELOPING URBAN CENTRE

- ▶ Becoming a distinct place
- ▶ Low to medium density
- ▶ Investment is occurring



MATURE URBAN CENTRE

- ▶ Distinct identity
- ▶ Medium to high density
- ▶ Range of services



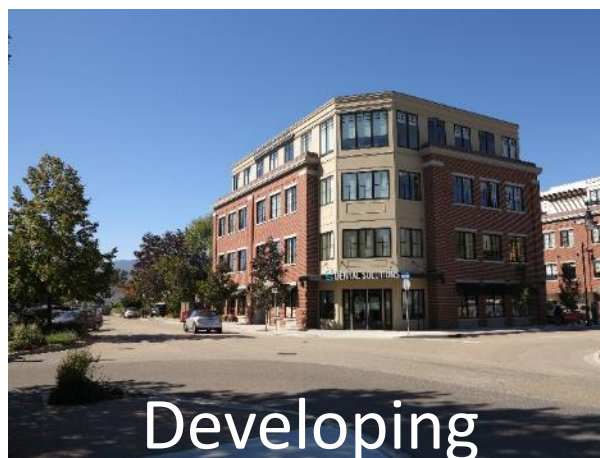
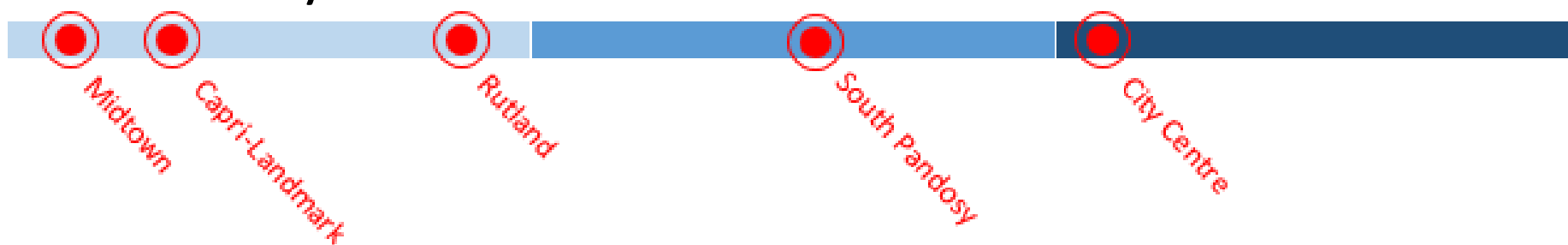
URBAN CENTRE THEORY OF CHANGE

► Kelowna's Urban Centres Stage of Development

Early

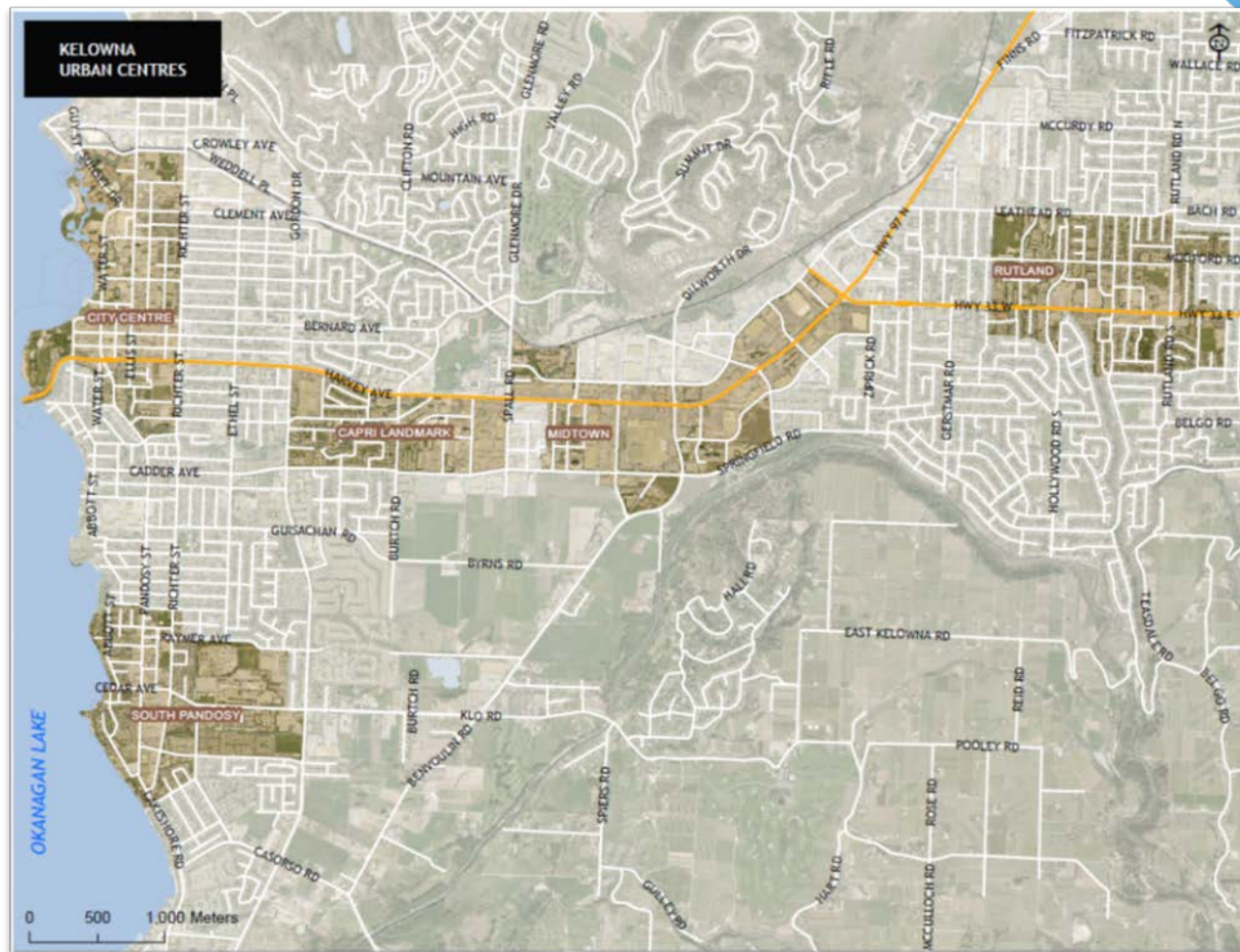
Developing

Mature



URBAN CENTRE PLANNING

- ▶ Key step to implement *UCR*
- ▶ Requires significant resources
- ▶ Ensure greatest impact



URBAN CENTRE PLANNING PRIORITIZATION

Urban Centre	Degree of Change & Development Pressure Expected	Need for Community Amenities	Need to Define Civic Investment Priorities	Age of Existing Planning
City Centre	High	Low	Low	2012, 2016
Capri-Landmark	High	High	High	No Plan*
Midtown	High	High	High	1997
South Pandosy	Medium	Low	Low	1995, 1997, 2013
Rutland	Medium	Medium	Medium	2005, 2009

* No area redevelopment plan is in place, but Capri Centre Plan adopted in 2016

NEXT STEPS

- ▶ Final refinement of principles & targets
- ▶ Refinement of UCR key elements
- ▶ Prepare final report for Council Adoption

FINAL THOUGHTS

- ▶ Urban Centres are engine of cities
- ▶ Planning is critical to transformation of centres
- ▶ Roadmap is key tool to encourage livable urban centres

