

Overview and update of Interior Health services

Deborah Preston, *Community Health Service Administrator*

Danielle Cameron, *MHSU Health Service Administrator*



Interior Health
Every person matters

Agenda

- * Interior Health Overview
- * Population Health Approach & Understanding Needs
- * Interior Health: Primary and Community Care Transformation
- * Interior Health's connection to current work
- * Substance Use Services Continuum
- * Discussion and Questions

Interior Health



IH key strategies



Population Health Approach

Aims to improve the health of the entire population and to reduce health inequities among population groups.

Looks at and acts upon the broad range of factors and conditions that have a strong influence on our health.

Population Health Approach & Understanding Needs of Population

- * Needs Assessment

- * Information Gathering (facts, assets, resources, gaps)
 - * Provides baseline data
- * Determines Priorities
- * Strengthens Partnerships & Encourages Collaboration
- * Informs Resource Allocation

Primary and Community Care Transformation: Why Transform?



Fragmented
care delivery

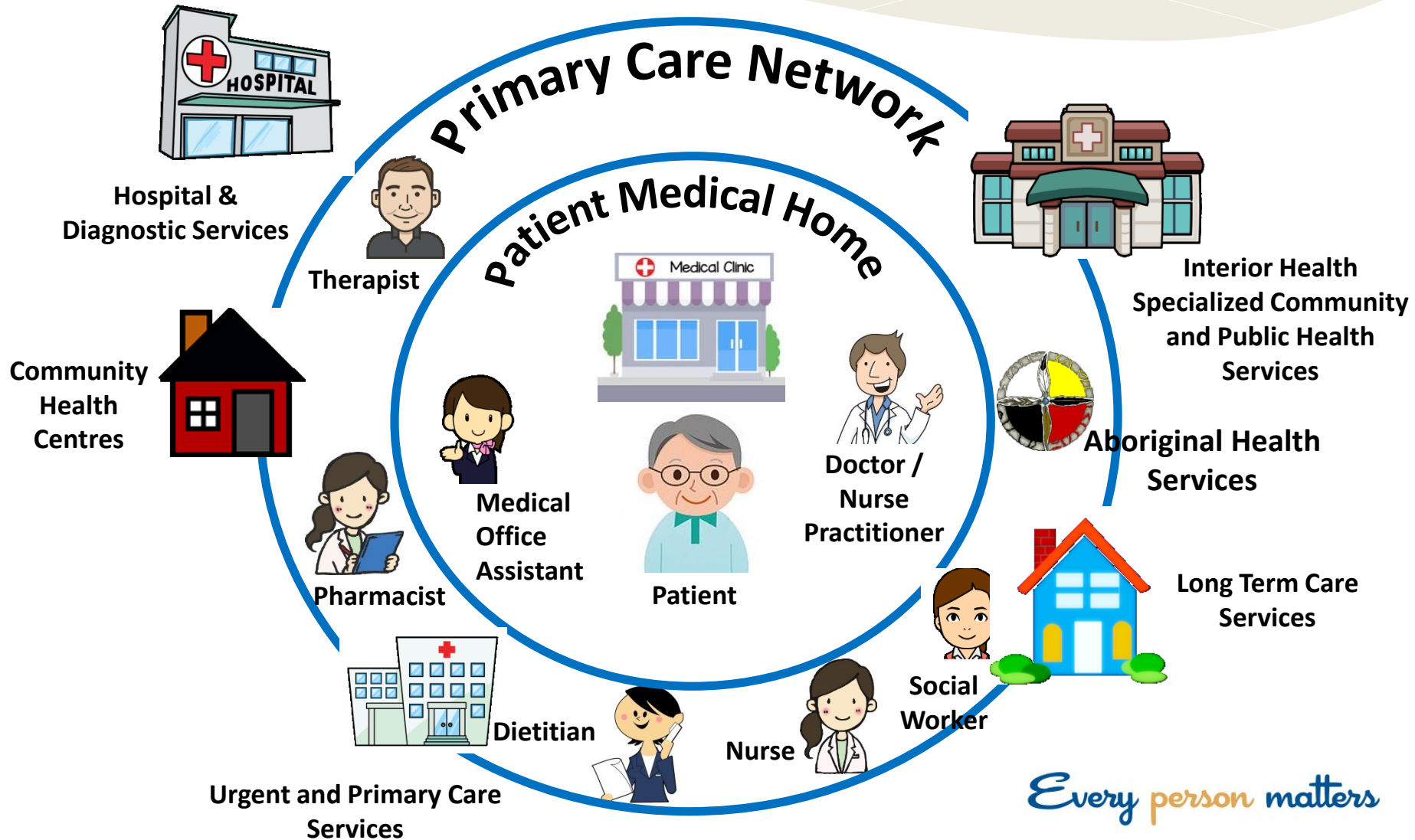


Changing
workforce

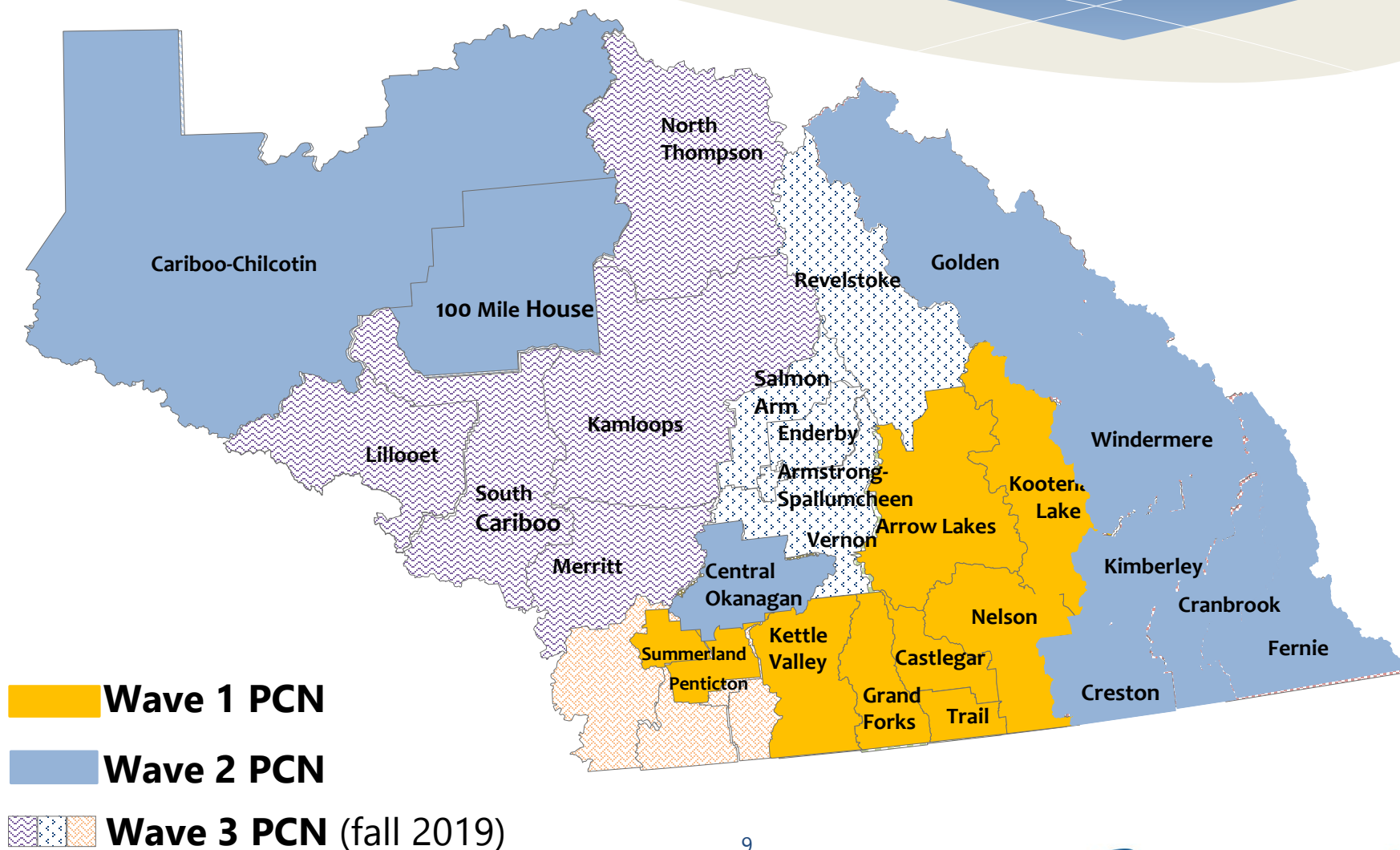


Increasing volume and
complexity of patient
care needs

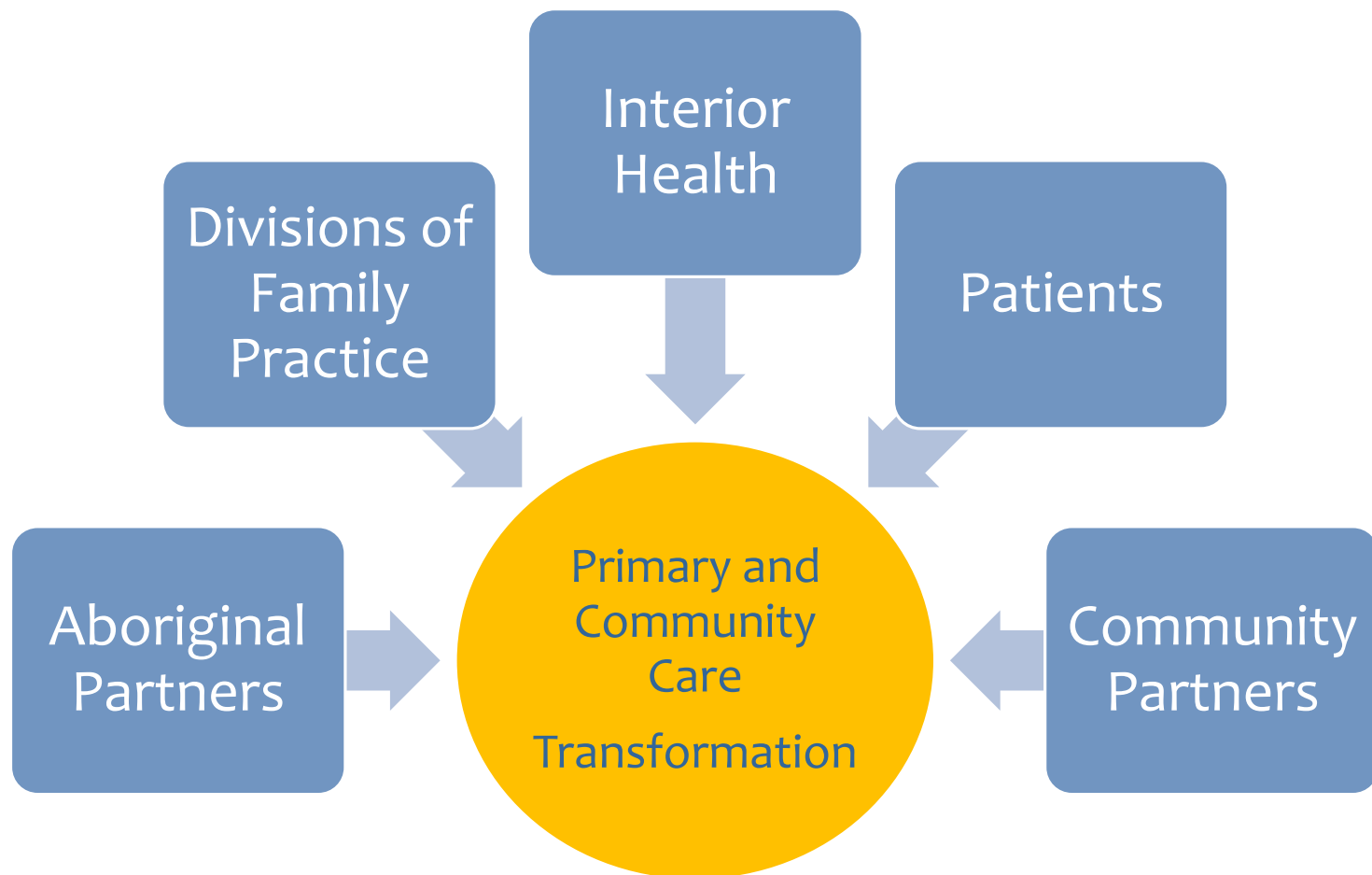
Integrated System of Care



Primary Care Networks



Partnership



Central Okanagan

- * Primary Care Network plan submitted to Ministry of Health. June 15, 2019
- * Urgent Primary Care Center: announced in September, to open in December 2019 (Capri)
- * Specialized Community Services Programs with initial focus on:
 - * Chronic Medical Frail
 - * Mental Health and Substance Use
- * NEXT areas of Focus – Cancer Care, Surgery



Where is Health connected?

- * Interior Health has been involved with Journey Home since the inception of the Task force.
- * Spring 2018, we shifted the way we approached Journey Home and Community Wellbeing issues, we came together with:
 - * Population Health – Medical Health Officer
 - * Healthy Communities
 - * Community Clinical Operations
 - * MSHU Clinical Operations
- * We all had to be at the table – the problems were complex and solutions require a collective, cross portfolio response

Where is Health with the ongoing work?

- * Active contributors to the Journey Home Strategy and with the board.
- * Participants and contributors to Journey Home activities:
 - * Shelter Design Labs
 - * Winter Mat Planning
 - * Systems Mapping
 - * Housing first 101
 - * Built For Zero
 - * Coordinated Access
 - * Ending “Us and Them” Nov 2018; October 2019
 - * Agassiz, McIntosh and McCurdy (BC Housing sites) community engagement awareness building open houses
- * Participants at Partnership tables with Journey Home H and the City of Kelowna:
 - * Community Action Team (CAT – Opioid Response)
 - * KoAST/HUB table – seats at situation table and senior leadership group
 - * System Leaders Table (City lead)
 - * Community Inclusion Team (City lead)

Where are the Risks?

- * While they are inextricably linked, the role of Health in the Housing is not clearly defined.
 - * Ministry of Municipal Affairs and Housing
 - * Ministry of Social Development and Poverty reduction
 - * Ministry of Health
 - * Ministry of Mental Health and Addictions
- * Wrap around services – what does this really mean? Is this Health?
 - * Involves Case Coordination and Individualized Service Planning to create, implement and monitor a plan of support for each individual
- * Provincial investments in Housing and higher level Housing with Supports.
 - * How does health align with new builds?

Substance use continuum



Interior Health Substance Use Service Continuum

Interior Health provides a wide range of substance use services, from prevention to intensive treatment for all ages.

We strive to ensure all services are welcoming and inclusive of all peoples, of any gender identities, cultures, ethnicities and backgrounds.

Access to Substance Use Services

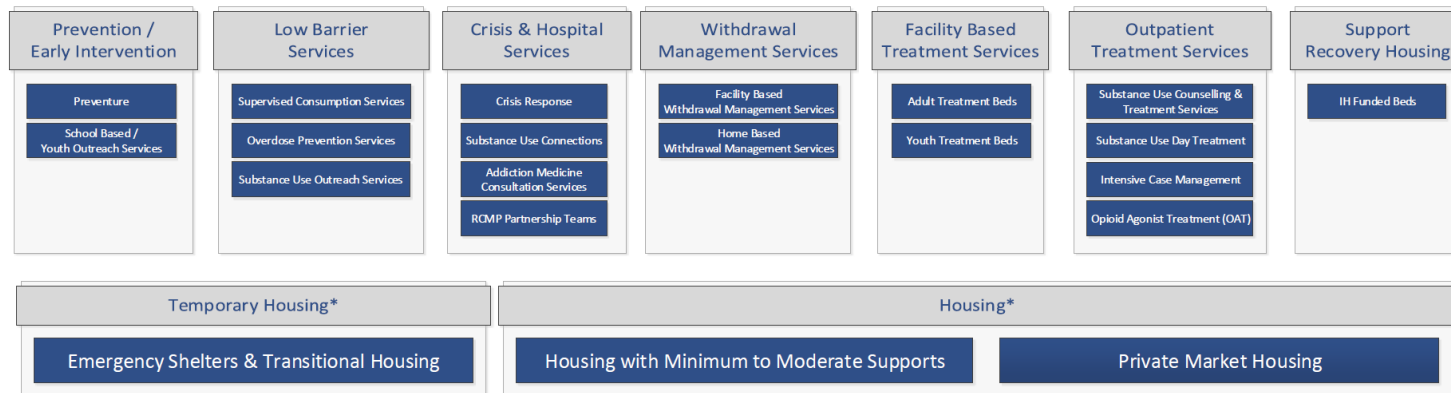
Person Centered | Recovery Oriented | Harm Reduction | Trauma Informed

Not all services are available in all centres

Low Barrier Services

Moderate to High Intensity Services

Long Term Recovery Support



*Interior Health does not provide housing but may provide in-reach services to these sites



Substance Use Team | Mental Health & Substance Use Network

Developed by: Sheri Keetch, Project Support Coordinator | Corinne Dolman, Director
Developed: 04/10/19 | Revised: N/A



Questions & Discussion

Contacts

- * Deborah Preston, *Community Health Service Administrator*
deborah.preston@interiorhealth.ca
- * Danielle Cameron, *MHSU Health Service Administrator*
danielle.cameron@interiorhealth.ca