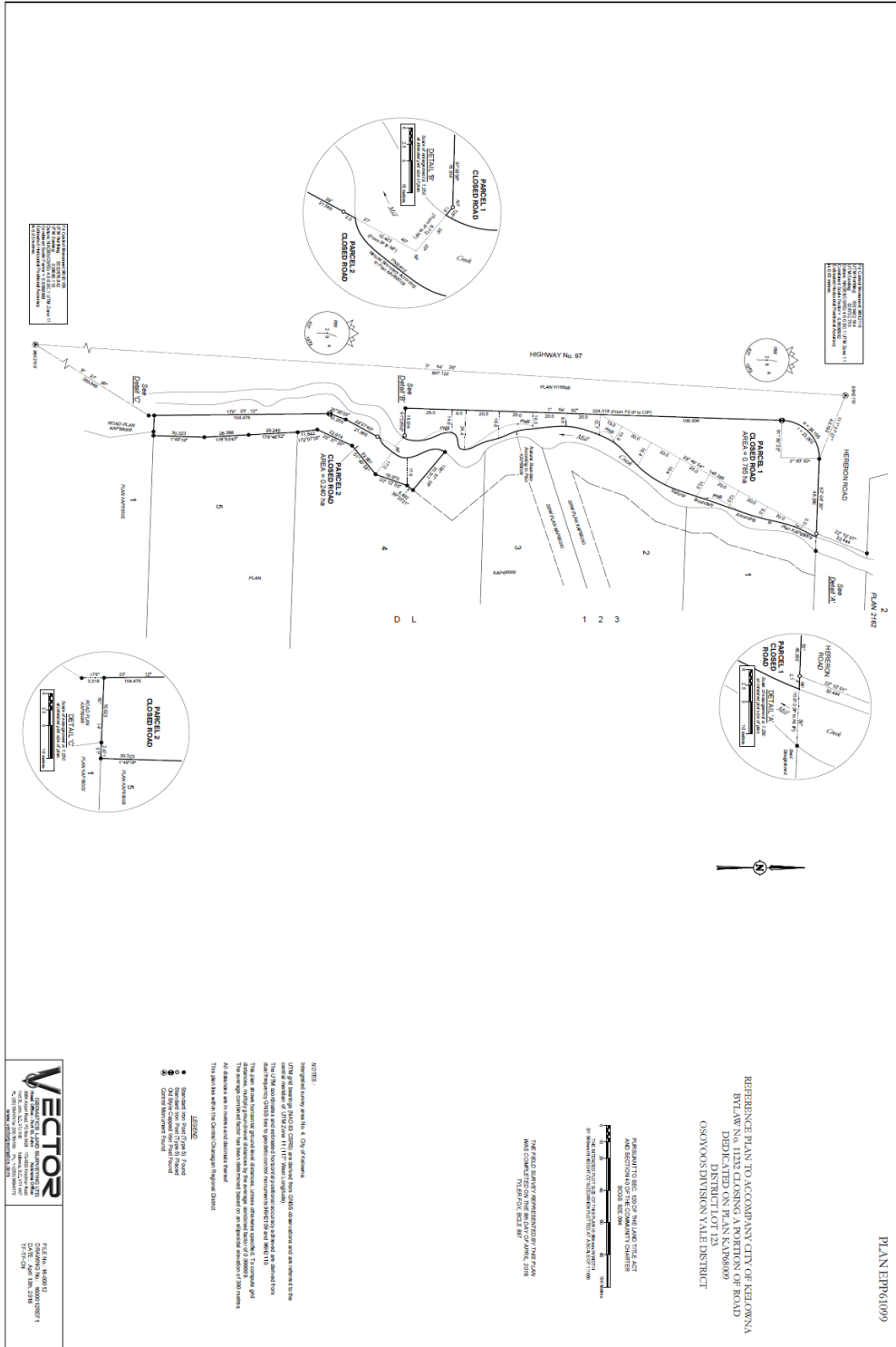


Schedule A



REFERENCE PLAN TO ACCOMPANY CITY OF KELOWNA
 BYLAW NO. 11212 CLOSING A PORTION OF ROAD
 DEPARTMENT OF PLANNING (K2106609)
 OSOYOOS DIVISION VALE DISTRICT

PLANER0610099

VECTOR
 CONSULTING AND SURVEYING LTD.
 2000 VALLEY VIEW AVENUE
 SUITE 200
 KELOWNA BC V1Y 9E8
 TEL: 250-861-1200
 FAX: 250-861-1201
 WWW.VECTORCONSULTING.COM

DATE: 04/10/2017
 DRAWING NO.: 000421017
 PROJECT NO.: 17714-04