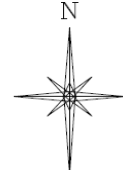
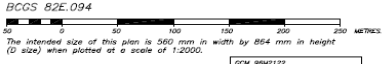
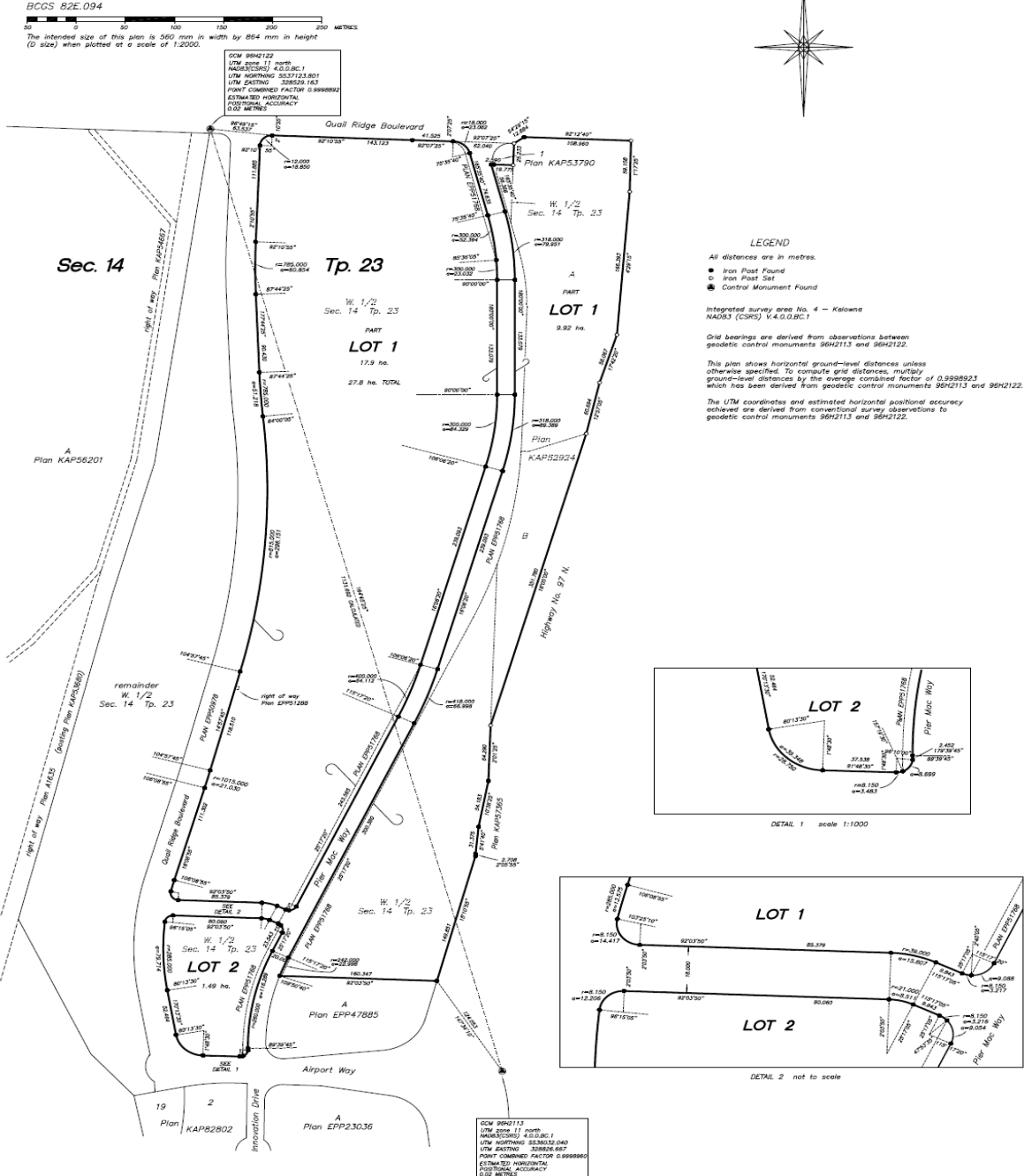


Schedule "C"

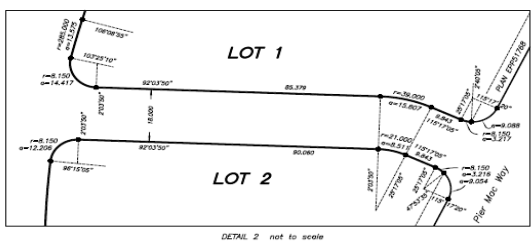
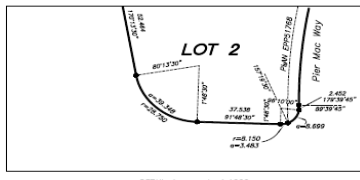
SUBDIVISION PLAN OF PART OF THE WEST 1/2 OF SEC. 14 TP. 23 ODYD EXCEPT PLANS H16596, KAP47192, KAP51877, KAP53641, KAP53790, KAP57365, KAP73608, KAP82802, EPP50978, EPP47885 AND EPP51876, LOTS A AND B D.L. 32 AND SEC. 14 TP. 23 ODYD PLAN KAP52924 AND OF CLOSED ROAD SEC. 14 TP. 23 ODYD SHOWN ON PLAN EPP51768

PLAN EPP55881



LEGEND
 All distances are in metres.
 ● Iron Post Found
 ○ Iron Post Set
 ⊙ Central Monument Found

Integrated survey area No. 4 - Kelowna
 NAD83 (CSRS) 14.0.0.0C.1
 Grid bearings are derived from observations between geodetic control monuments 98H2113 and 98H2122.
 This plan shows horizontal ground-level distances unless otherwise specified. To compute grid distances, multiply ground-level distances by the average combined factor of 0.9999923 which has been derived from geodetic control monuments 98H2113 and 98H2122.
 The UTM coordinates and estimated horizontal positional accuracy achieved are derived from conventional survey observations to geodetic control monuments 98H2113 and 98H2122.



CGM 98H2113
 UTM zone 17 north
 MAGNETIC COR. 4.0.0.0C.1
 UTM NORTHING 5336332.040
 UTM EASTING 338629.163
 POINT COMBINED FACTOR 0.9999992
 ESTIMATED HORIZONTAL POSITIONAL ACCURACY 0.02 METRES

This plan lies within the Central Okanagan Regional District.
 The field survey represented by this plan was completed on the day of 2015, by Douglas A. Goddard, B.C.S. 2688.
 No 1665.3 to 376 1665.3 CONSO.

D.A. Goddard Land Surveying Inc.
 103-1208 ST. PAUL STREET KILLOWNA PHONE 250-763-3733