

Schedule "B"

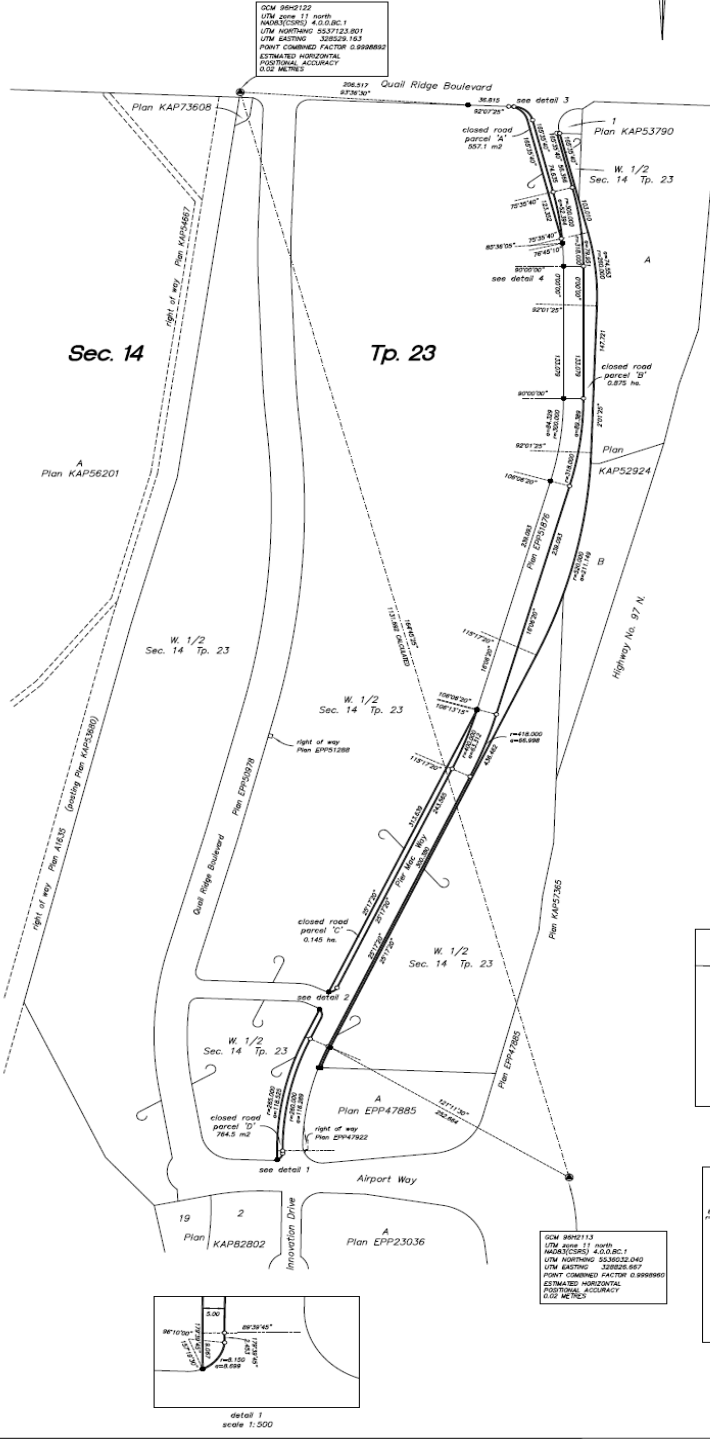
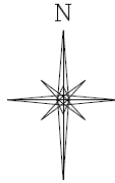
PLAN EPP51768

REFERENCE PLAN TO ACCOMPANY CITY OF KELOWNA ROAD CLOSURE AND REMOVAL OF HIGHWAY DEDICATION BYLAW #11154 OF PART OF ROAD SHOWN DEDICATED ON PLAN KAP51877 SEC. 14 TP. 23 O.D.Y.D.

PURSUANT TO SECTION 120 OF THE LAND TITLE ACT AND SECTION 40 OF THE COMMUNITY CHARTER.

BCGS 82E.094

The intended size of this plan is 550 mm in width by 664 mm in height (D size) when plotted at a scale of 1:2000.



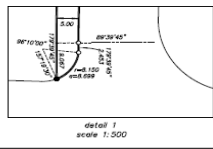
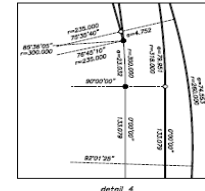
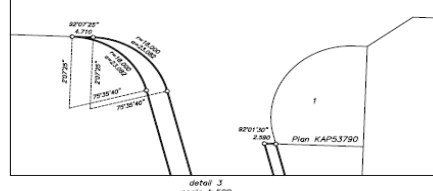
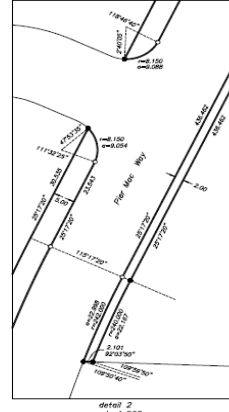
LEGEND
 All distances are in metres.
 ● Iron Post Found
 ○ Iron Post Set
 ⊙ Control Monument Found

Integrated survey area No. 4 - Kelowna
 NAD83 (CORS) V4.0.0.0.0.1

Grid bearings are derived from observations between geodetic control monuments 96N2113 and 96N2122.

This plan shows horizontal ground-level distances unless otherwise specified. To compute grid distances, multiply ground-level distances by the average combined factor of 0.99989923 which has been derived from geodetic control monuments 96N2113 and 96N2122.

The UTM coordinates and estimated horizontal positional accuracy achieved are derived from conventional survey observations to geodetic control monuments 96N2113 and 96N2122.



CGM 96N2113
 UTM Zone 11 North
 NAD83(CORS) 4.0.0.0.1
 UTM EASTING 532723.001
 UTM NORTHING 52029.163
 POINT COMBINED FACTOR 0.99989923
 ESTIMATED HORIZONTAL POSITIONAL ACCURACY 0.02 METRES

This plan lies within the Central Okanagan Regional District.
 This plan lies within the jurisdiction of the approving officer for the City of Kelowna.
 The field survey represented by this plan was completed on the 10th day of August, 2015, by Douglas A. Costard, ECLS 588.

Rte 16653 Rte 378 16653 RD CLS2
 D.A. Costard Land Surveying Inc.
 103-1508 ST. PAUL STREET KELOWNA PHONE 250-763-3733