



# Electric Vehicle Charging Station Update

May 2019



# Why EV?

- ▶ Transportation biggest source of Kelowna's GHG Emissions
- ▶ Switching to EV reduces GHG Emissions
- ▶ BC one of the leading provinces for EV Sales
- ▶ All new vehicle sales in BC zero-emission by 2040





# Types of EV Chargers

- ▶ Level 1
  - ▶ Slow trickle charge
  - ▶ Best for long-term / overnight
- ▶ Level 2
  - ▶ Takes 4 – 6 hours for full charge
- ▶ DC Fast Charge (Level 3)
  - ▶ 80% charge in 30 minutes



# Expanding EV charging network

## ► 4 DC Fast Chargers:

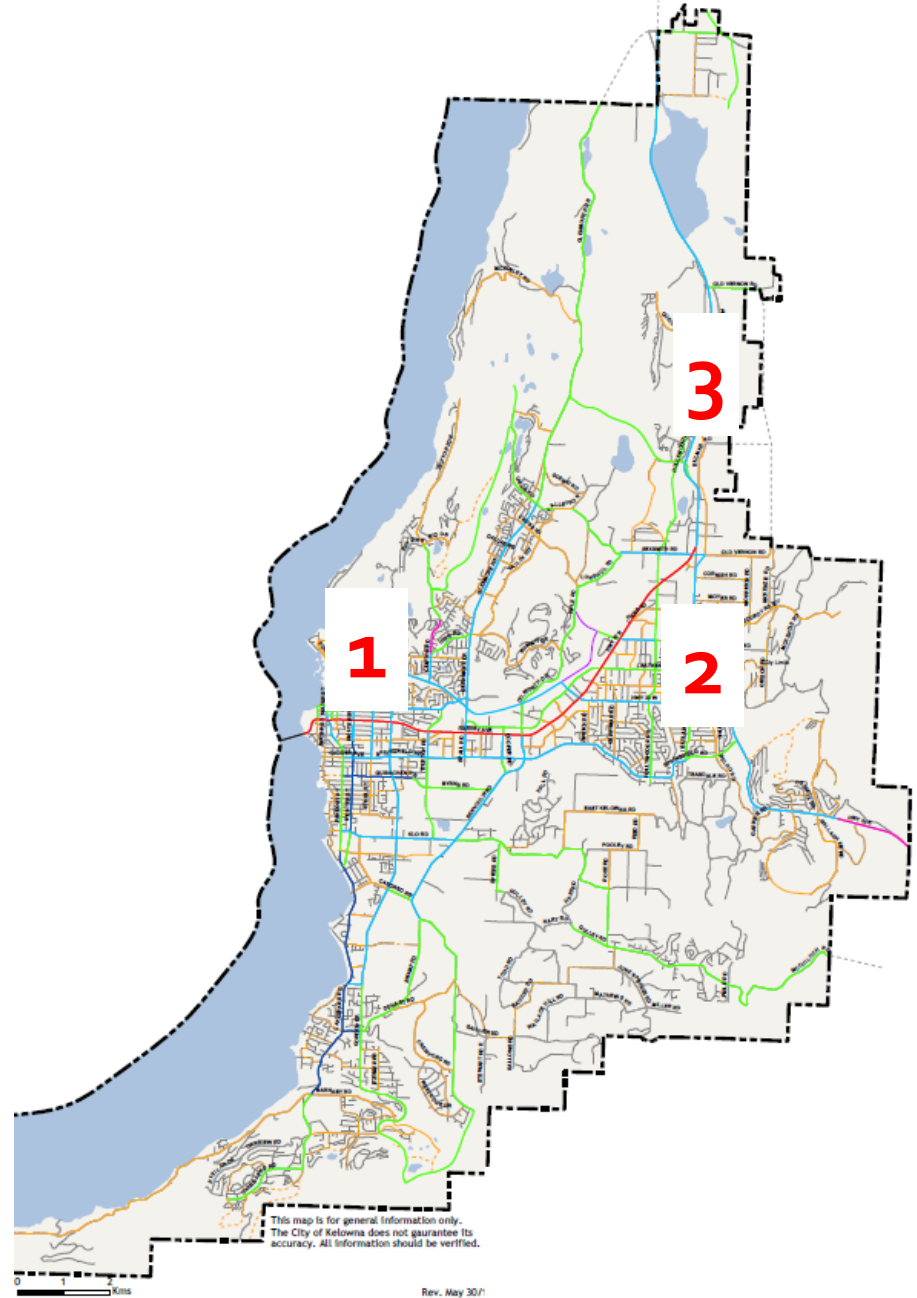
NRCan	\$150,000
Province of BC	\$ 75,000
FortisBC	\$ 75,000
<u>YVR (Airport)</u>	<u>\$ 50,000</u>
<b>TOTAL</b>	<b>\$350,000</b>

- City provides the land for the charging stations.



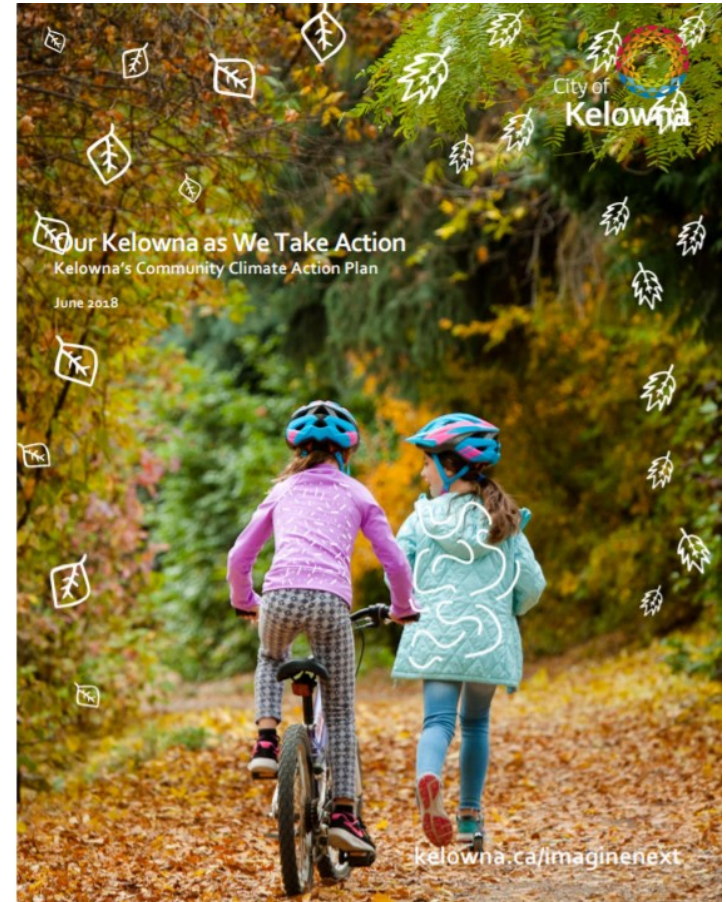
# DC Fast Chargers Locations

- ▶ DC fast chargers at 3 entry/exits to the City:
  1. Museum Parking Lot (Ellis Street)
  2. Centennial Park
  3. Airport (2 stations)
- ▶ Rate \$9 per 30 minute charge.



# Delivering on our plans

- ▶ Kelowna's Community Climate Action Plan
  - ▶ Develop a community wide EV strategy



# Delivering on Council Priorities

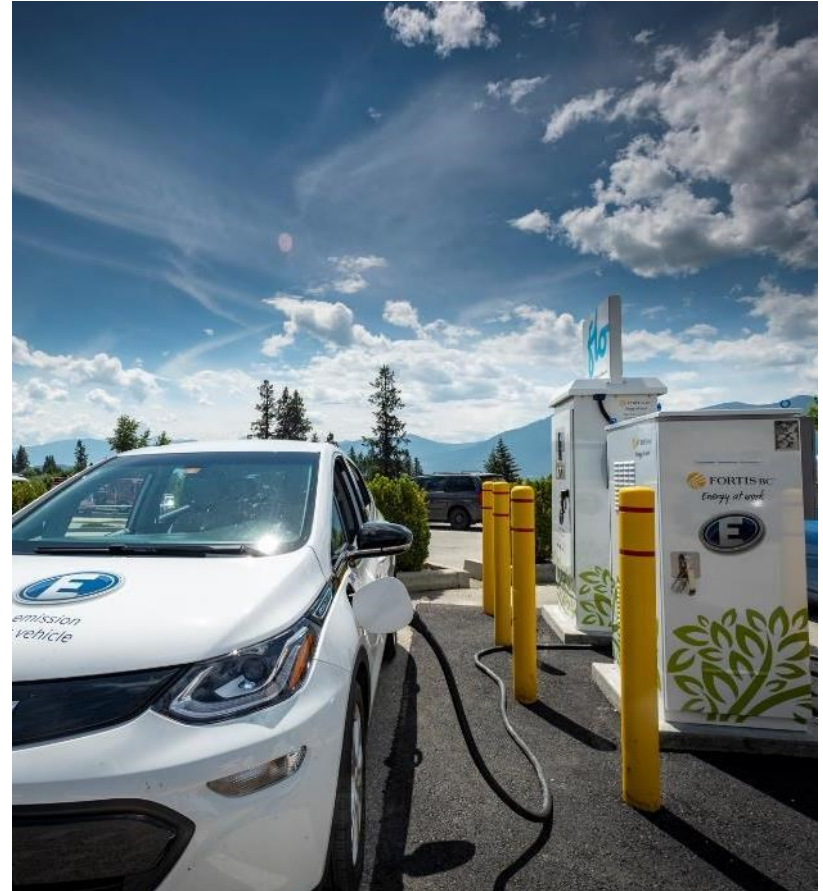
- ▶ Environmental Protection:
  - ▶ Greenhouse gas emissions are decreasing
- ▶ Transportation & Mobility
  - ▶ Emerging technologies make it easier to get around.





# Next Steps

- ▶ Applying for 2 more DC Fast Chargers
  - ▶ 1 each for Museum / Centennial Park
  - ▶ \$150,000 covered by NRCan and FortisBC
- ▶ Investigate Level 2 chargers for downtown parkades / parking lots
- ▶ Develop EV Strategy







*Questions?*