

Kirschner Mountain: Proposed Land Use Shifts



Proposed growth node - Kirschner Mtn

Proposed growth node - Black Mtn

Remove residential land use

Retain residential land use

OCP 2030 Future Land Use Designations

Commercial

Education / Institutional

First Nations Reserve

Multiple Unit Residential (Cluster Housing)

Multiple Unit Residential (Low Density)

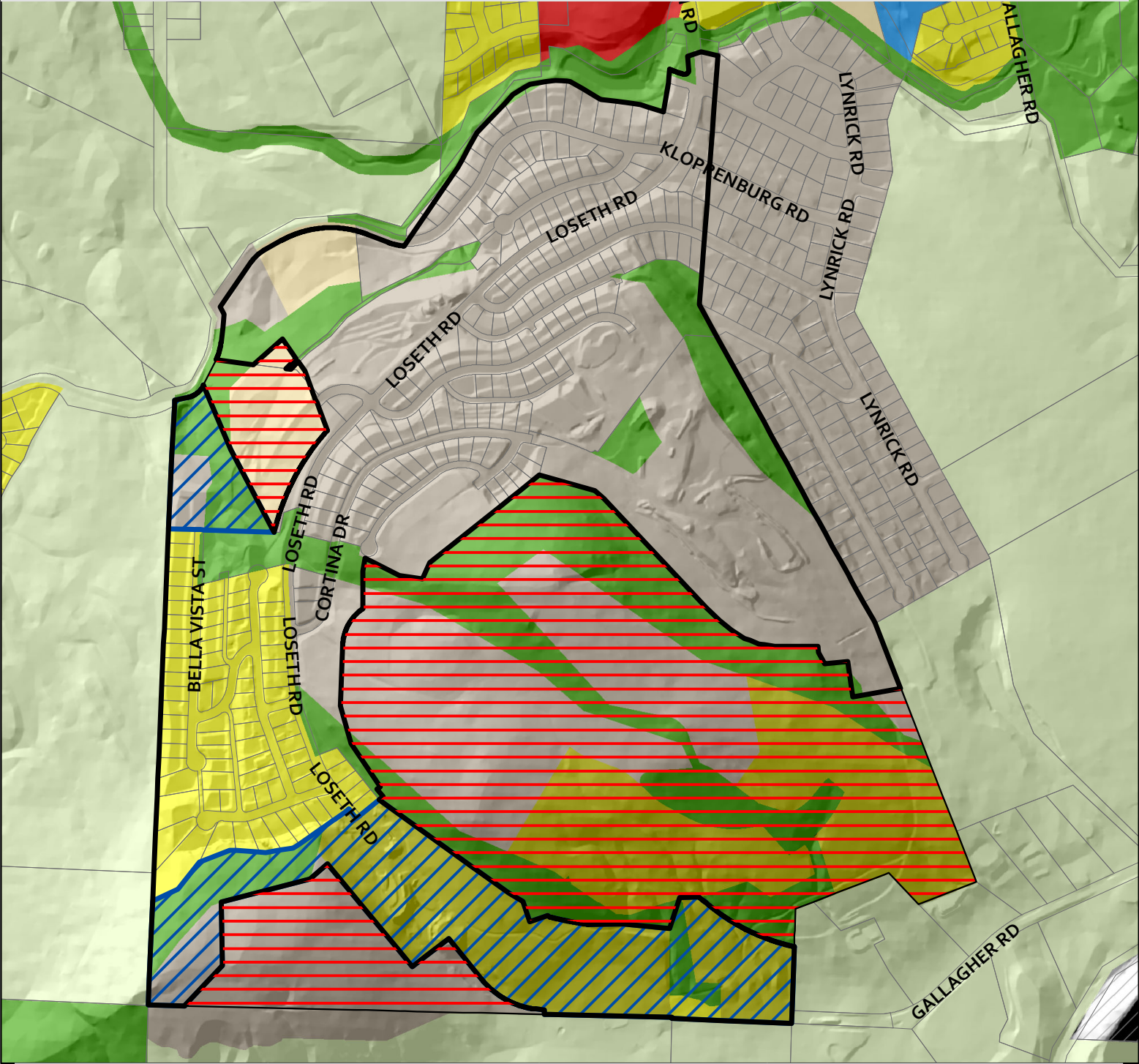
Major Park and Open Space

Public Service Utilities

Resource Protection

Single / Two Unit Residential

Single / Two Unit Residential - Hillside



Kirschner Mountain Land Use Considerations Summary

Units Built Today (Estimate)	Future Growth (per Growth Scenario)	Total Projected Capacity	Estimated Number of Units Removed
264 units	250-300 units	500-600 units	350-450 units