

TRAIL DEVELOPMENT PLAN

Okanagan Rail Trail Corridor



CONTENT

- ▶ Vision
- ▶ Approach
- ▶ The Trail
- ▶ Environment
- ▶ Archaeology
- ▶ Consultation
- ▶ Design
- ▶ Construction
- ▶ Cost Estimate
- ▶ Next Steps
- ▶ Recommendations
- ▶ Q&A

VISION

- ▶ A continuous public trail
from Coldstream to Kelowna

VISION

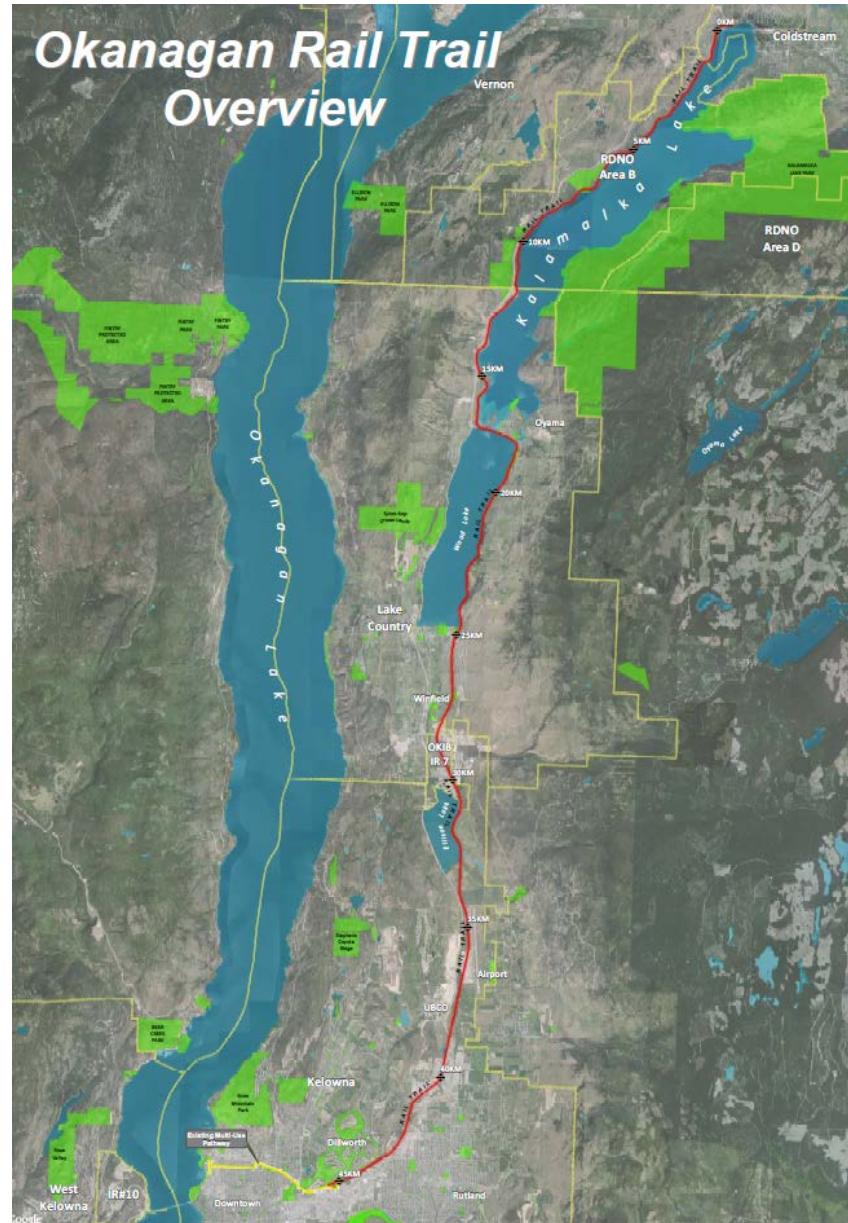
- ▶ A continuous public trail from Coldstream to Kelowna
- ▶ In the future ... multi-modal transportation

APPROACH

- ▶ Objective: a basic trail
- ▶ Understand the site and issues
- ▶ Partnership model
- ▶ Community consultation
- ▶ Integration with fundraising

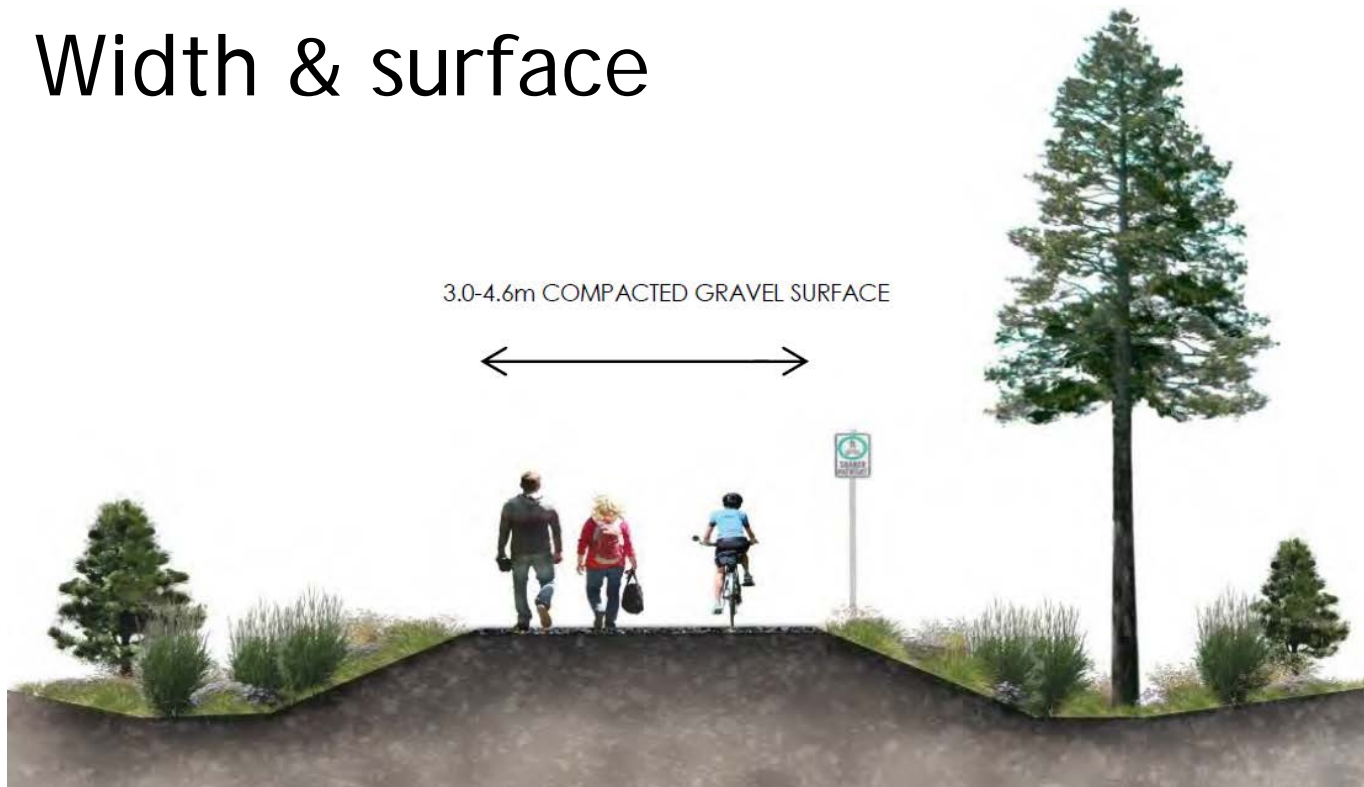
TRAIL

- ▶ Extent
 - ▶ 48km



TRAIL

- ▶ Extent
- ▶ Width & surface



TRAIL

- ▶ Extent
- ▶ Width & surface
- ▶ Site sections
 - ▶ Agricultural



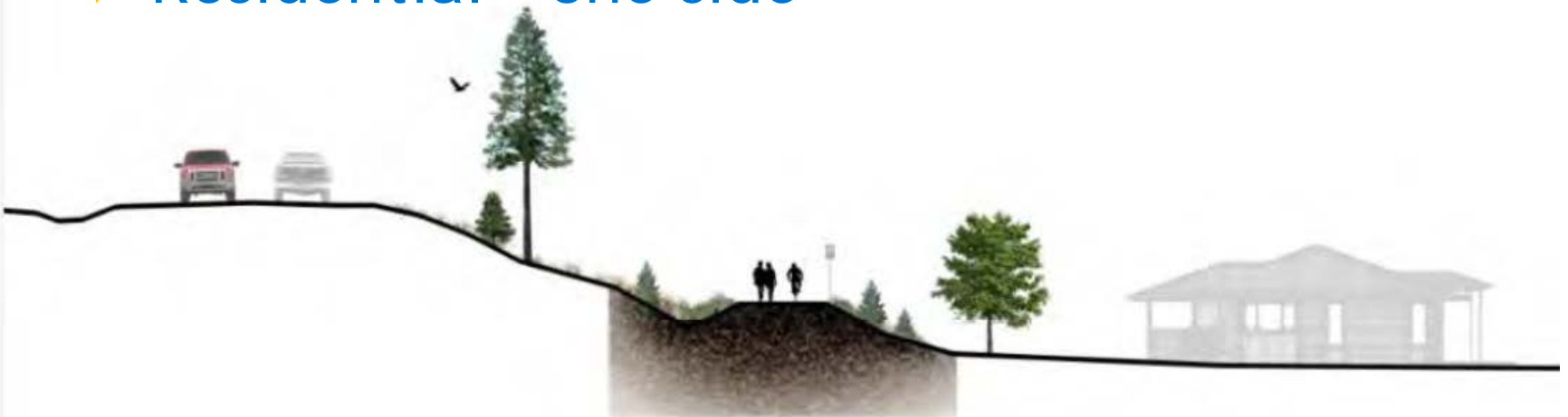
TRAIL

- ▶ Extent
- ▶ Width & surface
- ▶ Site sections
 - ▶ Residential – both sides



TRAIL

- ▶ Extent
- ▶ Width & surface
- ▶ Site sections
 - ▶ Residential – one side



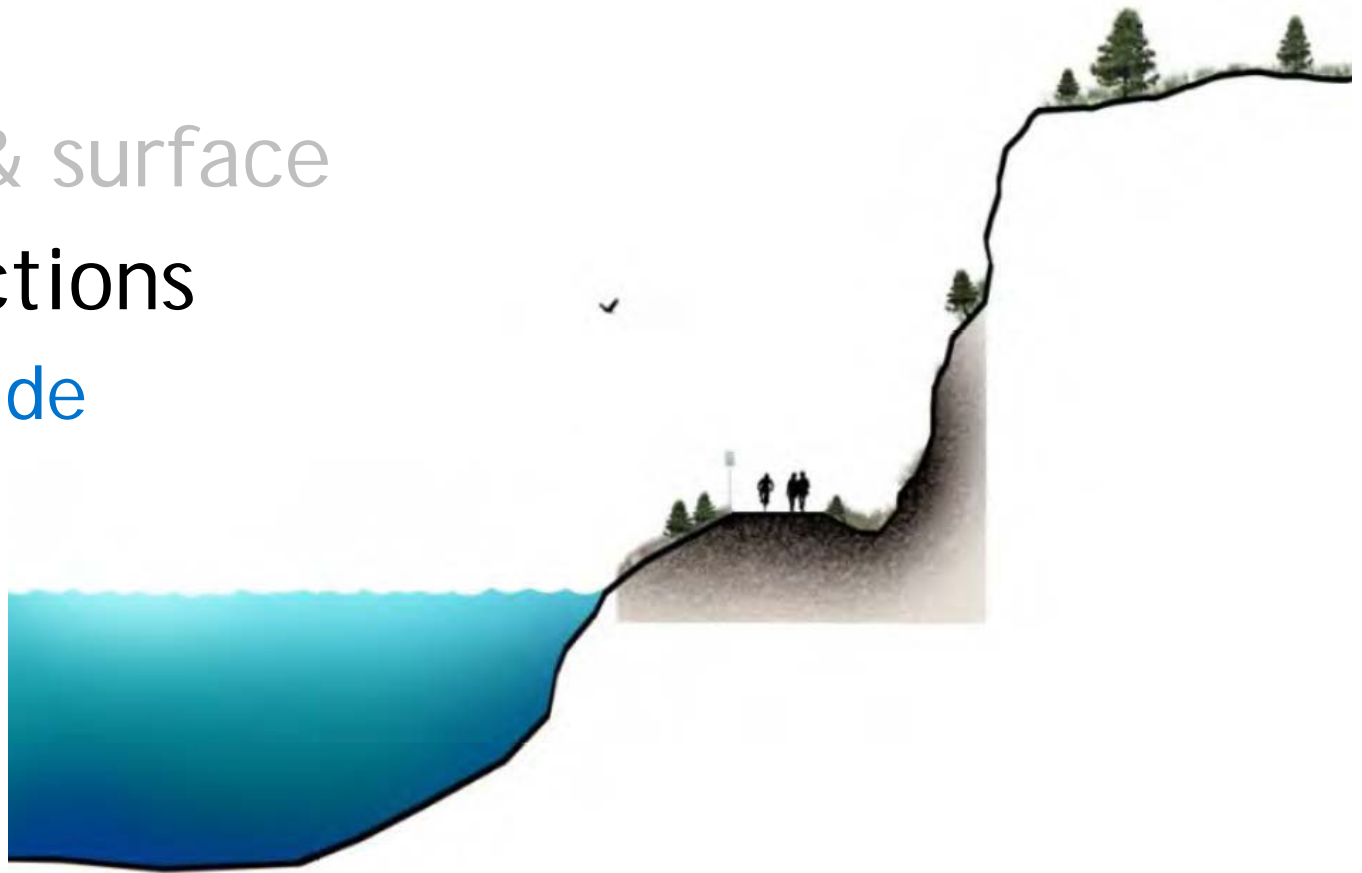
TRAIL

- ▶ Extent
- ▶ Width & surface
- ▶ Site sections
 - ▶ Industrial



TRAIL

- ▶ Extent
- ▶ Width & surface
- ▶ Site sections
 - ▶ Lakeside



TRAIL

- ▶ Extent
- ▶ Width & surface
- ▶ Site sections
- ▶ Access control & safety
 - ▶ Barricades/gates for access control
 - ▶ Site safety
 - ▶ Road crossings

ENVIRONMENT

- ▶ Site remediation
 - ▶ CN responsible for remediation of contaminated sites
 - ▶ CN currently working on remediation plan and schedule

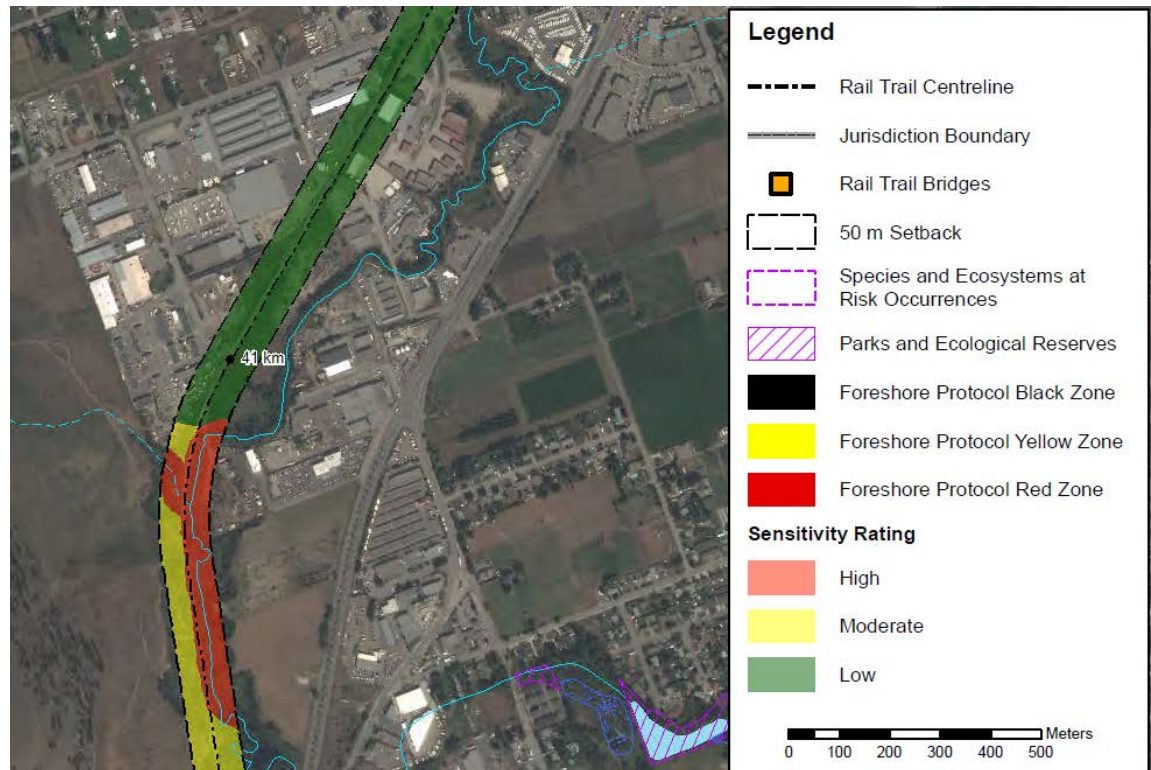
ENVIRONMENT

- ▶ Site remediation

- ▶ Assessment
 - ▶ Overview assessment completed
 - ▶ Terrestrial and aquatic red-blue-yellow zones identified
 - ▶ Regulatory requirements identified

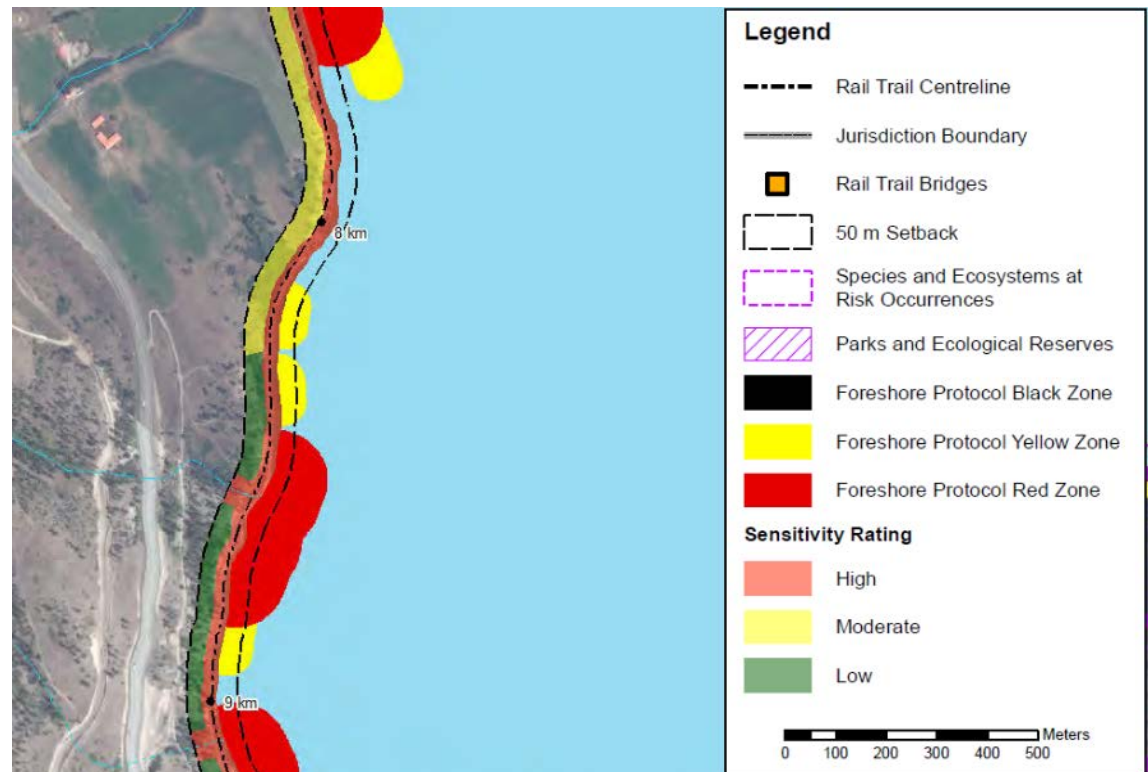
ENVIRONMENT

- ▶ Site remediation
- ▶ Assessment



ENVIRONMENT

- ▶ Site remediation
- ▶ Assessment



ARCHAEOLOGY

- ▶ Traditional territory of Sqilxw
- ▶ Known sites, & potential for other sites
- ▶ Archaeological overview to be undertaken
- ▶ Protocol to be set up for construction

CONSULTATION - METHODS

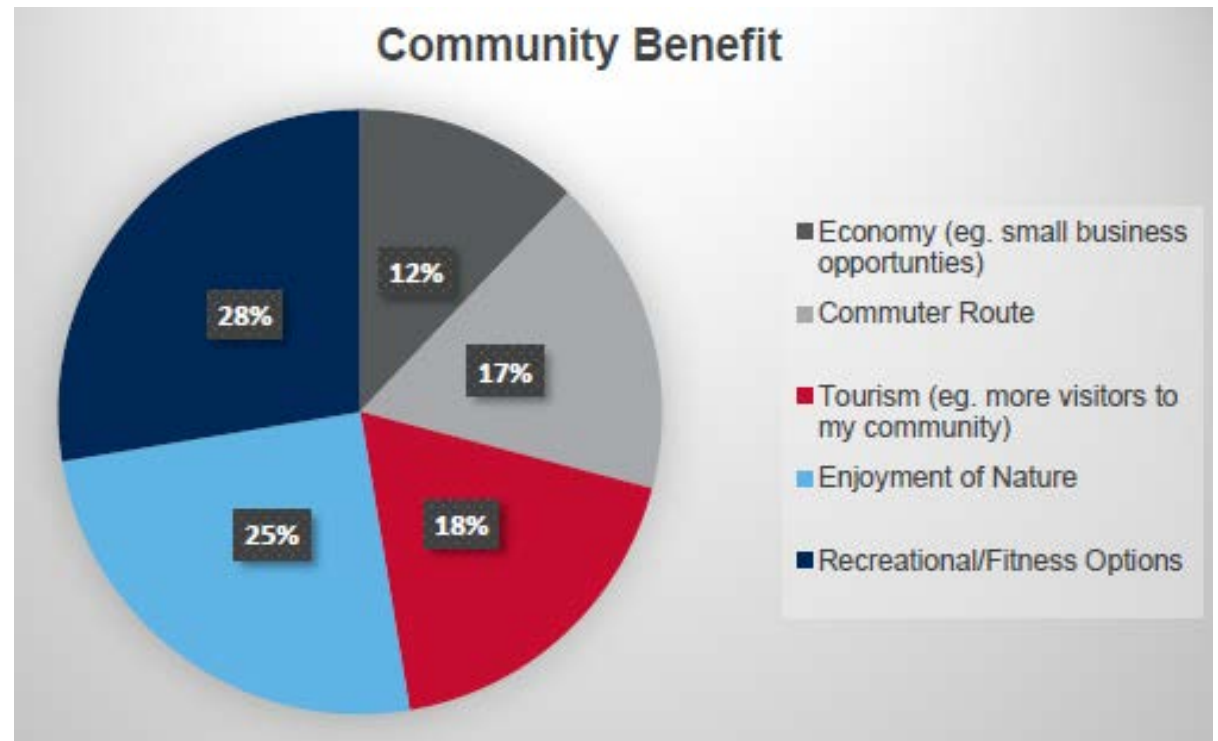
- ▶ Open Houses
 - ▶ On-line survey & interactive map
- ▶ 940 attendees
 - ▶ 10,000 views
 - ▶ 687 completed surveys
 - ▶ 160 opportunities
 - ▶ 2,300 interactions

CONSULTATION - RESULTS

- ▶ 96% support for development of trail

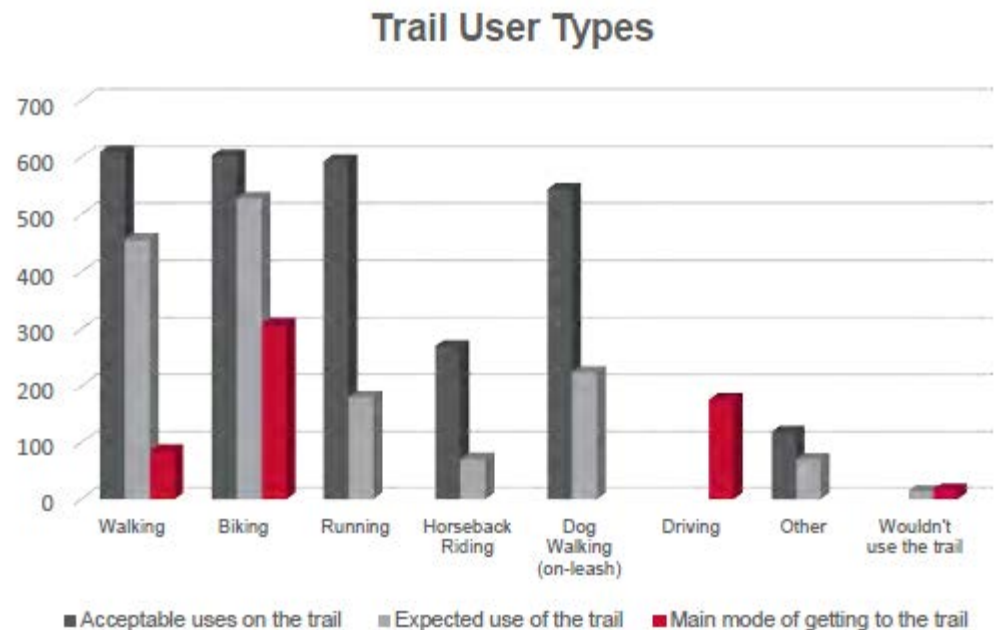
CONSULTATION - RESULTS

- ▶ 96% support
- ▶ Benefits



CONSULTATION - RESULTS

- ▶ 96% support
- ▶ Benefits
- ▶ Expected use
 - ▶ ~600 walking/running
 - ▶ ~500 cycling
 - ▶ ~200 dog walking
 - ▶ ~50 equestrian



CONSULTATION - RESULTS

- ▶ 96% support
- ▶ Benefits
- ▶ Expected use
- ▶ Common themes
 - ▶ Connectivity to existing trails
 - ▶ Adjacent property concerns
 - ▶ Issues re specific uses
 - ▶ Parking, access, maintenance
 - ▶ Natural areas & wildlife
 - ▶ Tourism, economic development & commuting

DESIGN

- ▶ Alignment
 - ▶ Follow existing rail bed
 - ▶ Adjust for:
 - ▶ Archaeology
 - ▶ Environment
 - ▶ Site conditions

DESIGN

- ▶ Alignment
- ▶ Coldstream / RDNO

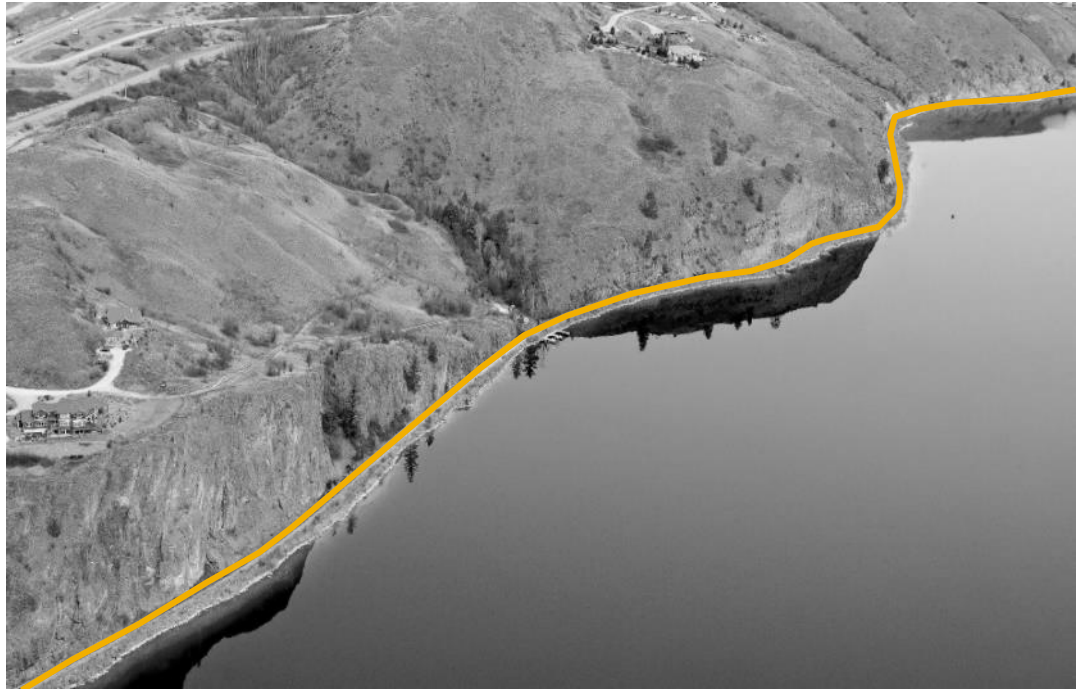


image compliments of Okanagan Rail Trail Initiative

DESIGN

► Alignment

► Lake Country



image compliments of Okanagan Rail Trail Initiative

DESIGN

► Alignment

► Duck Lake Reserve



image compliments of Okanagan Rail Trail Initiative

DESIGN

► Alignment

► Kelowna

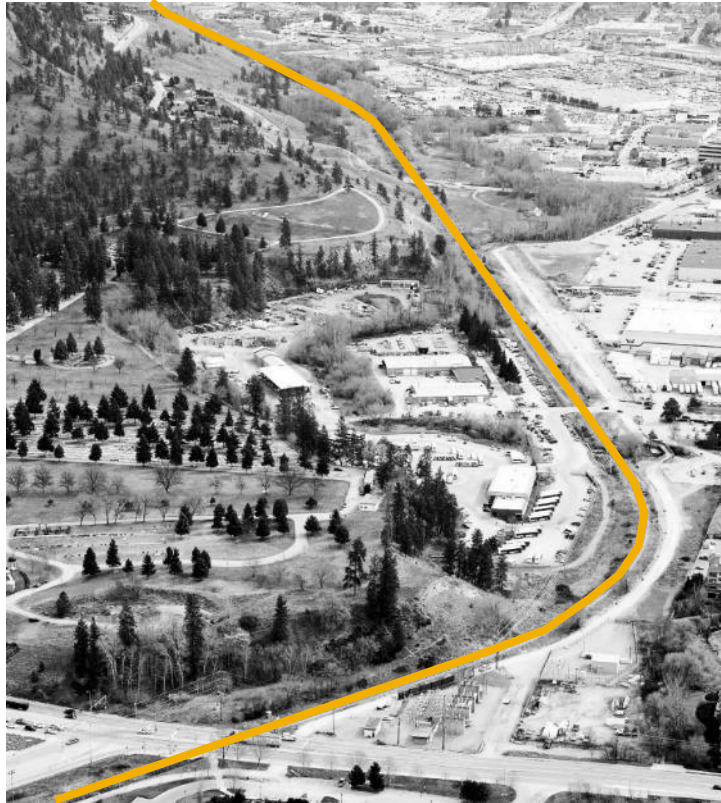
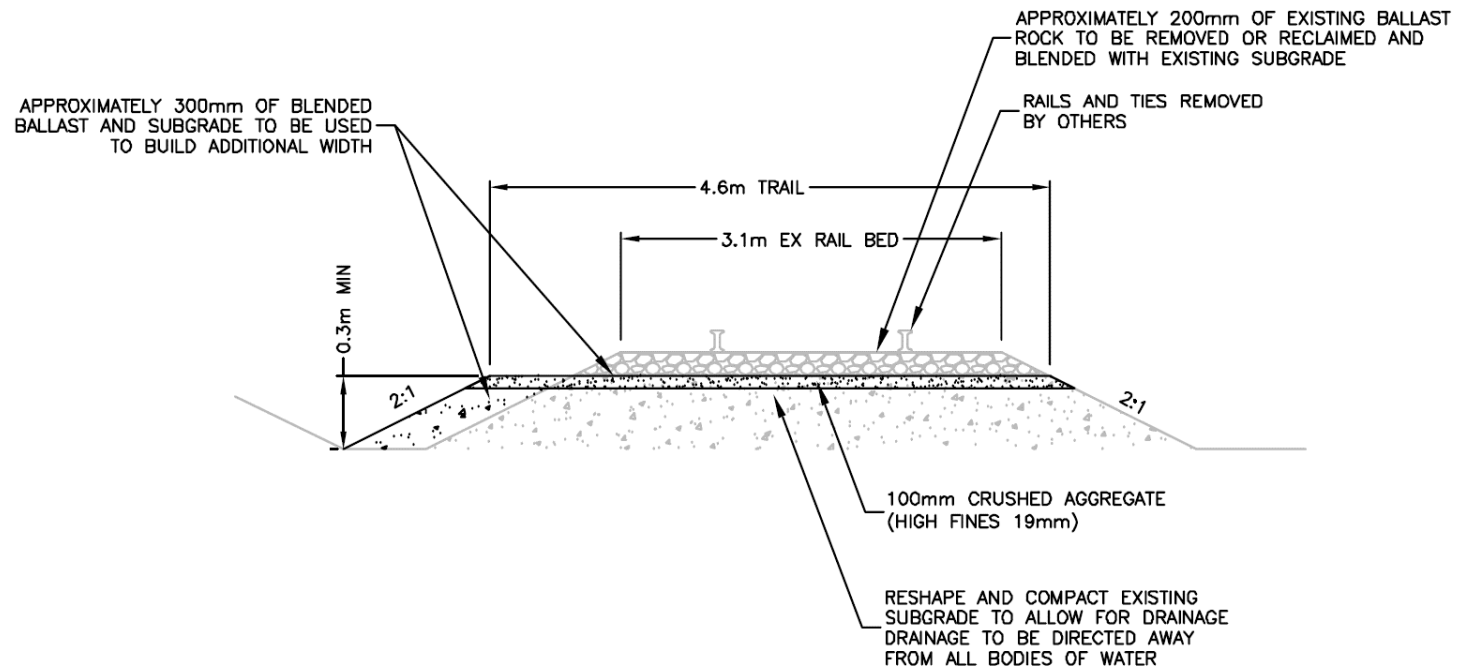


image compliments of Okanagan Rail Trail Initiative

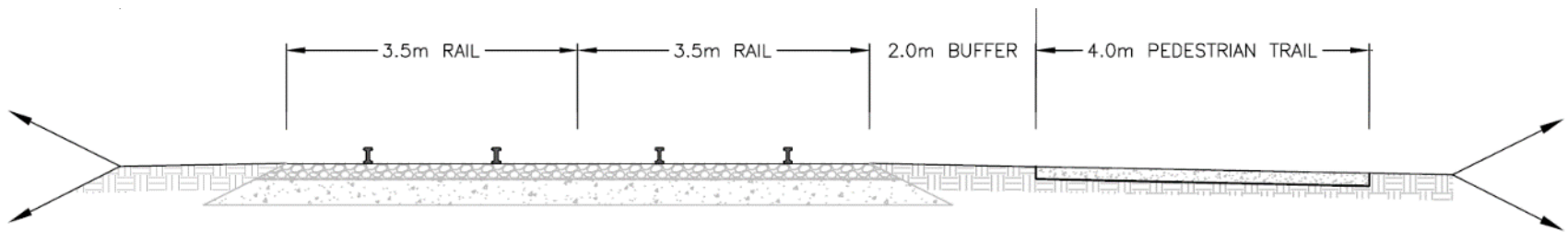
DESIGN

- ▶ Alignment
- ▶ Trail section



DESIGN

- ▶ Alignment
- ▶ Trail section
- ▶ Future multi-modal



DESIGN

- ▶ Alignment
- ▶ Trail section
- ▶ Future multi-modal
- ▶ Base
 - ▶ Crushed & compacted aggregate
 - ▶ Accessible surface
 - ▶ Sturdy, engineered base
 - ▶ Long lasting
 - ▶ Capability for asphalt topping

CONSTRUCTION

- ▶ Alignment
- ▶ Trail section
- ▶ Future multi-modal
- ▶ Base
- ▶ Construction
 - ▶ Use existing materials
 - ▶ Minimize hauling
 - ▶ Scheduling windows
 - ▶ Prioritized phasing (multi-year)
 - ▶ Access controls
 - ▶ Rock scaling
 - ▶ Environment, drainage
 - ▶ Road crossings
 - ▶ Trail, bridges & signage

COST ESTIMATE

▶ Environment, bridges, rock scaling	\$ 1,063,000
▶ Drainage	350,000
▶ Access controls and road crossings	1,129,000
▶ Trail construction	2,950,000
▶ Contingency & engineering allowance	2,196,800

TOTAL* \$ 7,688,800

*plus fundraising fees

NEXT STEPS

TRACK 1

Development

- ▶ Fundraising *
- ▶ Env'l/arch'y/geotech'l
- ▶ Design
- ▶ Permits
- ▶ Consultation
- ▶ Construction
- ▶ Operation & maintenance

NEXT STEPS

TRACK 1

Development

- ▶ Fundraising *
- ▶ Env'l/arch'y/geotech'l
- ▶ Design
- ▶ Permits
- ▶ Consultation
- ▶ Construction
- ▶ Operation & maintenance

TRACK 2

Planning

- ▶ Corridor protection
- ▶ Network integration
- ▶ Infrastructure
 - ▶ parking, washrooms, lights
- ▶ Amenities
 - ▶ furniture, signage, heritage

RECOMMENDATIONS

- ▶ Receive this report for information
- ▶ Endorse the *Trail Development Plan*
- ▶ Staff to work with IDT to develop detailed plans for construction

Q & A



image compliments of Okanagan Rail Trail Initiative