



# Area Water Management Planning

Ron Westlake, P. Eng. & Rod MacLean, P. Eng. | January 2019

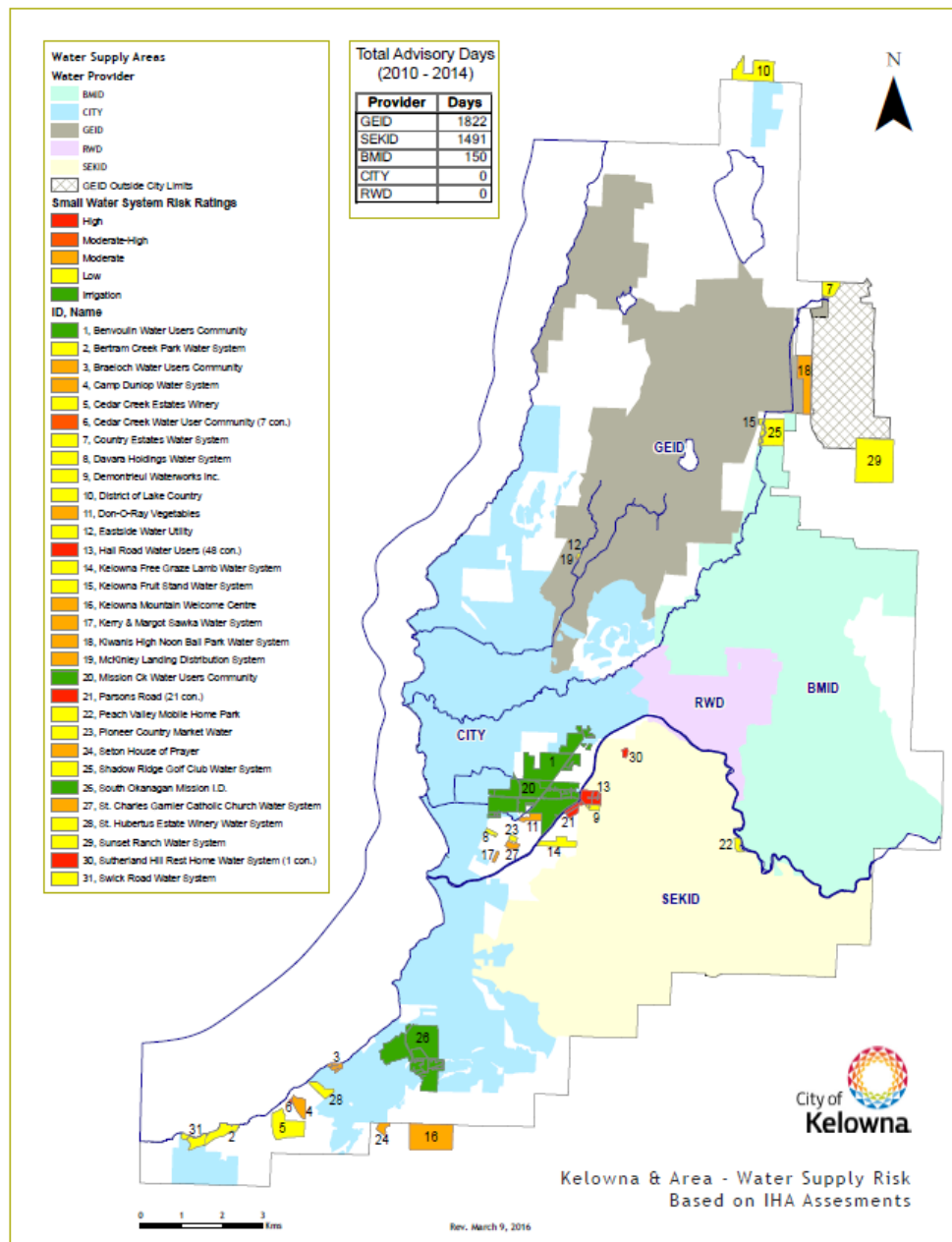
# Agenda

- ▶ Introduction & background
  - ▶ Kelowna Integrated Water Supply Plan
  - ▶ SEKID/SOMID Integration Project
- ▶ Area-based water management planning
  - ▶ Values/Principles
  - ▶ Balancing our collective needs
  - ▶ What is 'area-based water management'?
- ▶ Current work plan – scoping & high level engagement



# Kelowna Integrated Water Supply Plan

- ▶ Multiple independent water supply providers
- ▶ Collaboration with the four largest
  - ▶ challenges meeting Canadian Drinking Water Standards
  - ▶ high cost of infrastructure upgrades
  - ▶ need for least cost, best solutions
- ▶ Senior Government funding opportunity
  - ▶ SEKID & SOMID
  - ▶ Preliminary Engineering
  - ▶ Funding application in 2016



# Water Integration Project - Update

## ▶ SEKID

- ▶ Domestic water separation
- ▶ Construction underway
- ▶ Completion scheduled for 2020

## ▶ SOMID

- ▶ Agricultural water supply
- ▶ LAS planned in 2019
  - ▶ Process underway
  - ▶ Council report soon

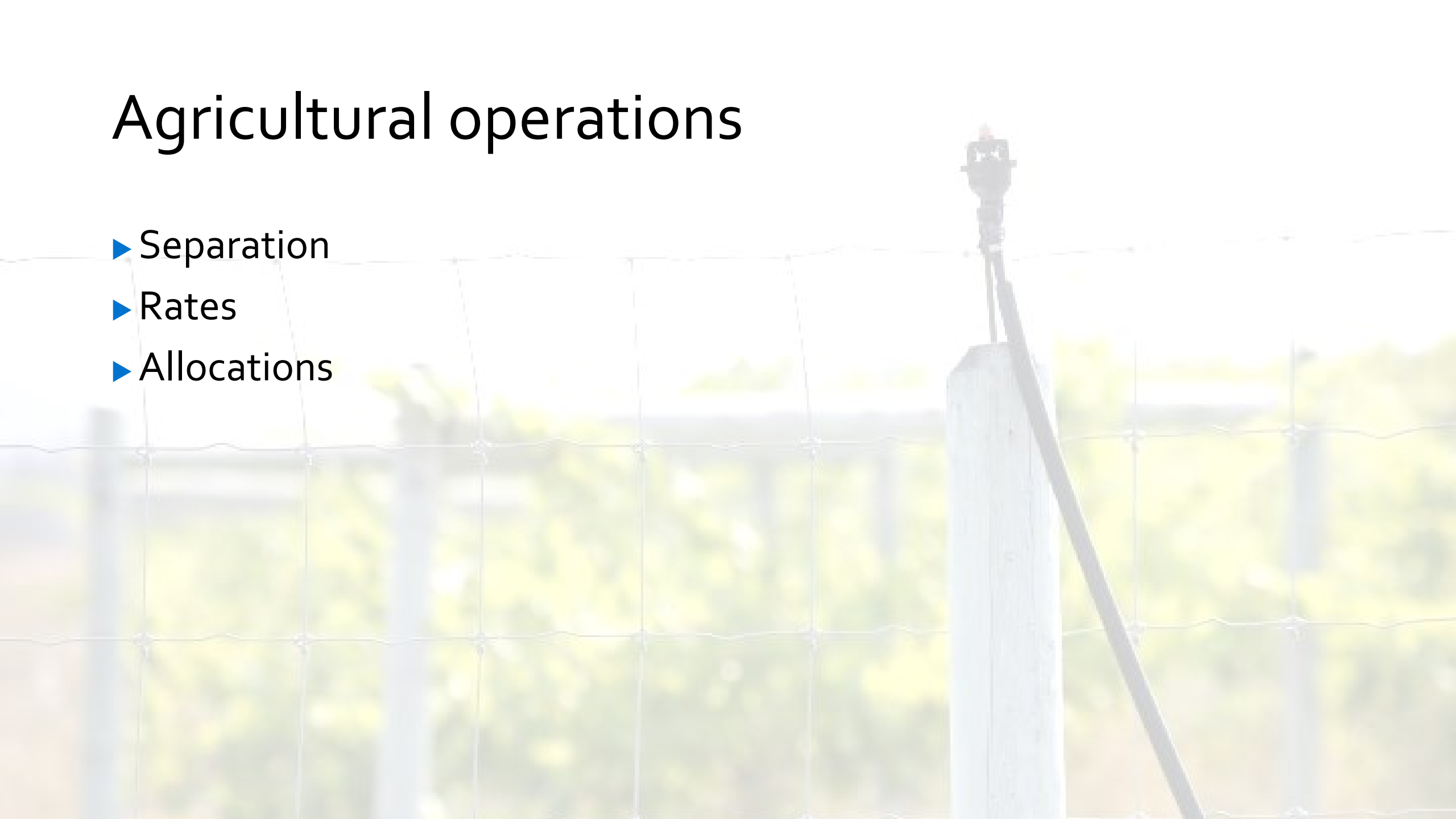
Canada





# Agricultural operations

- ▶ Separation
- ▶ Rates
- ▶ Allocations



# Need for broader water management

- ▶ Water management is complex
  - ▶ Many interests & stakeholders
  - ▶ Overlapping jurisdictions
- ▶ Conditions are changing
- ▶ Pragmatic & sustainable water management is critical
- ▶ Area-based Water Management – Rod MacLean





shared value : our lake



A serene landscape photograph showing a sunset over a body of water. The sun is positioned low on the horizon, partially obscured by a dark, silhouetted mountain range. The sun's light creates a bright, shimmering reflection on the water's surface, which is covered in gentle ripples. The sky is a clear, pale blue, and the overall mood is peaceful and calm.

1. quantity



A young girl with blonde hair, wearing a colorful, patterned one-piece swimsuit, is running through shallow water. She is smiling and has her arms outstretched. Water is splashing around her legs and feet. The background shows a body of water and a sandy beach with some greenery in the distance.

2. quality





### 3. connection

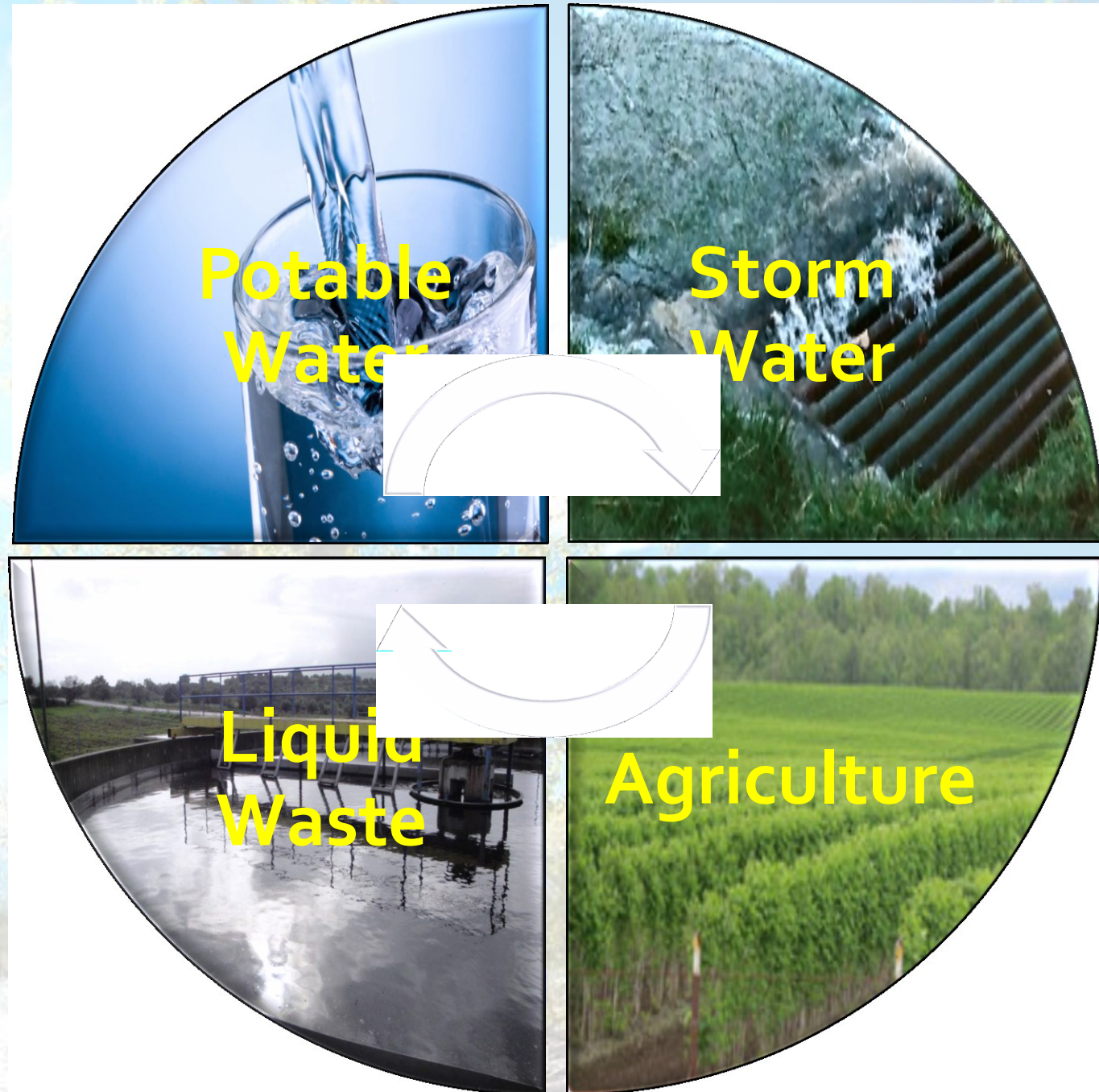




water shapes us

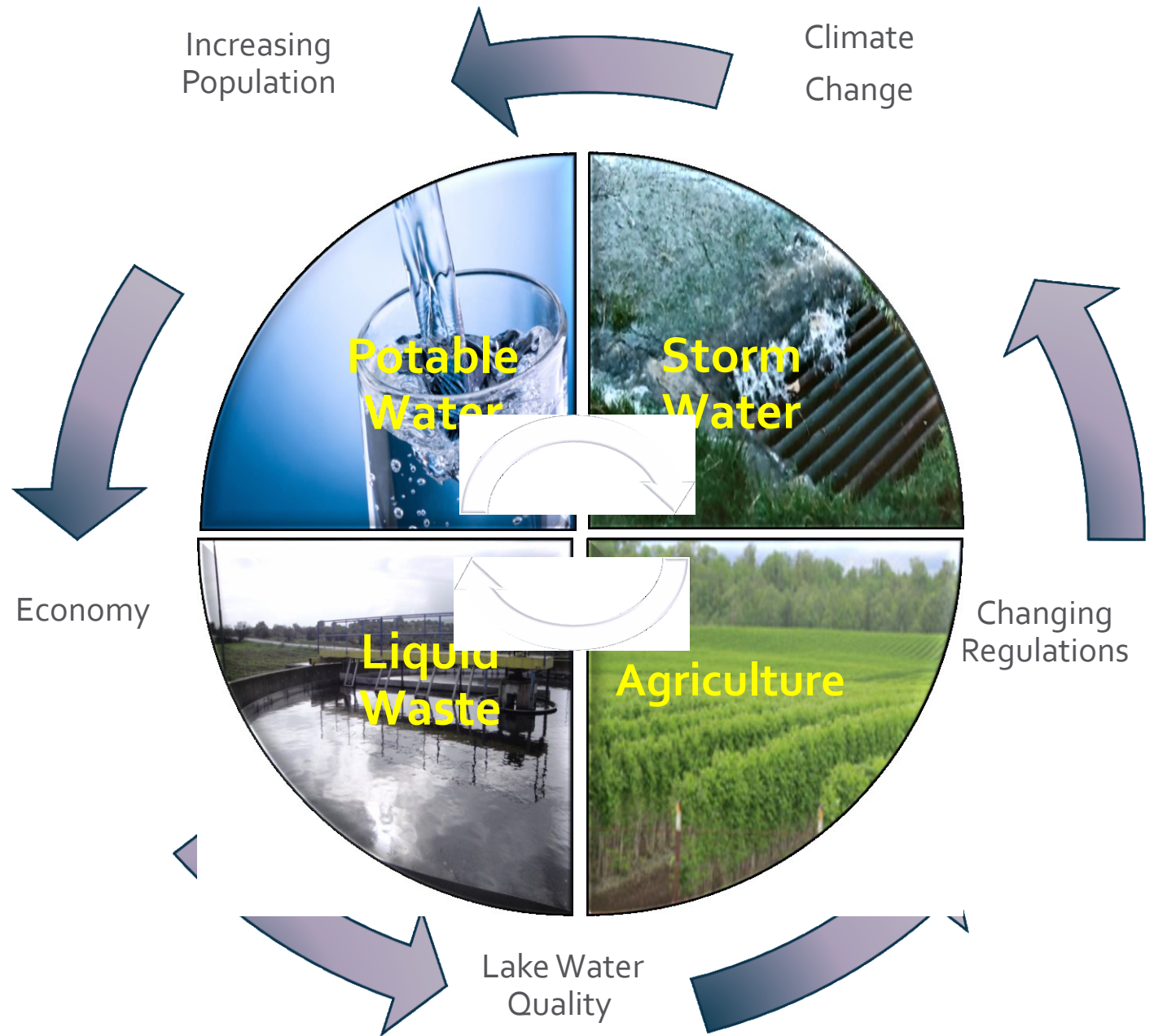


balancing needs





# Sustainability







floods







landslides





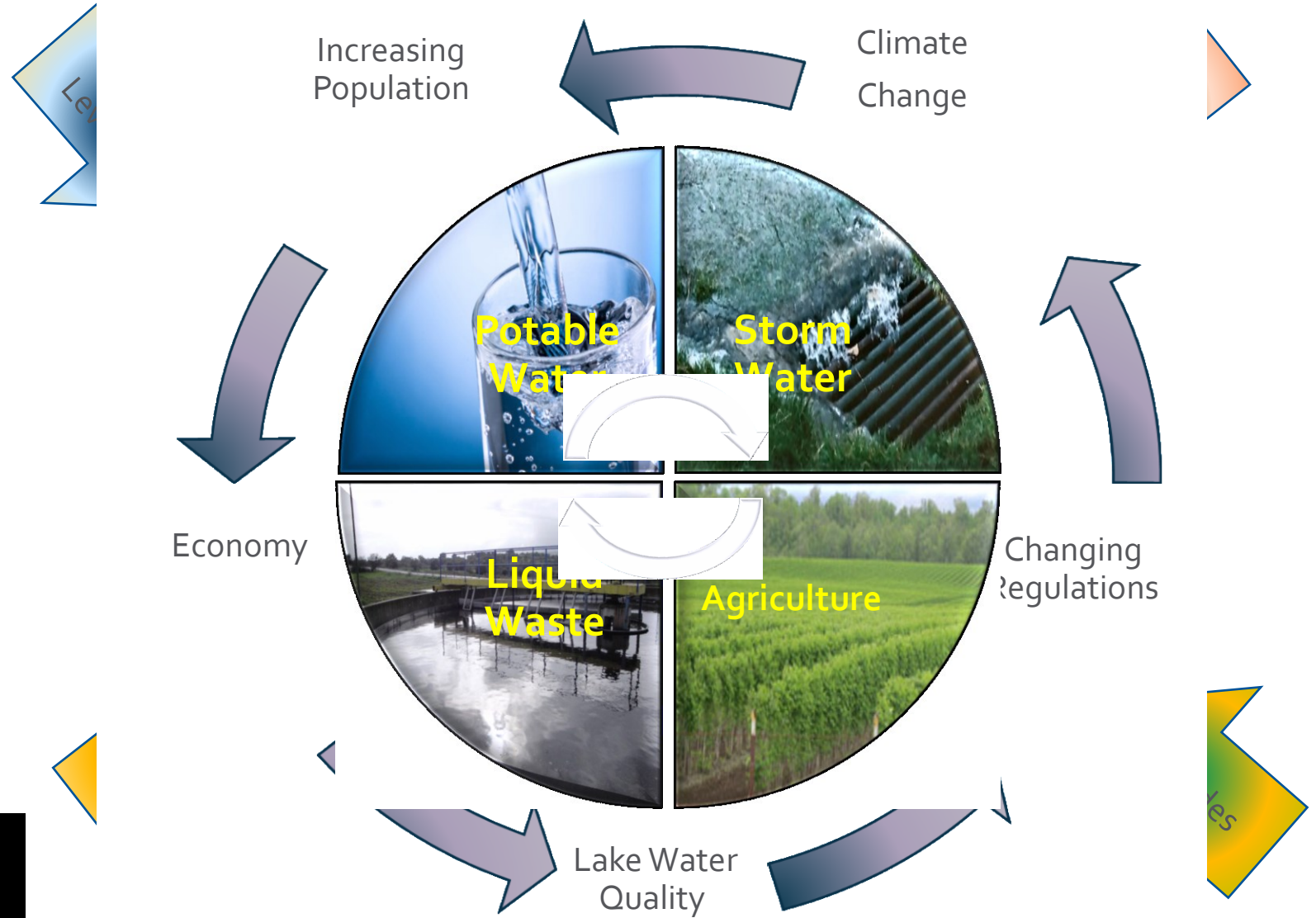
drought



fire







Sustainability?

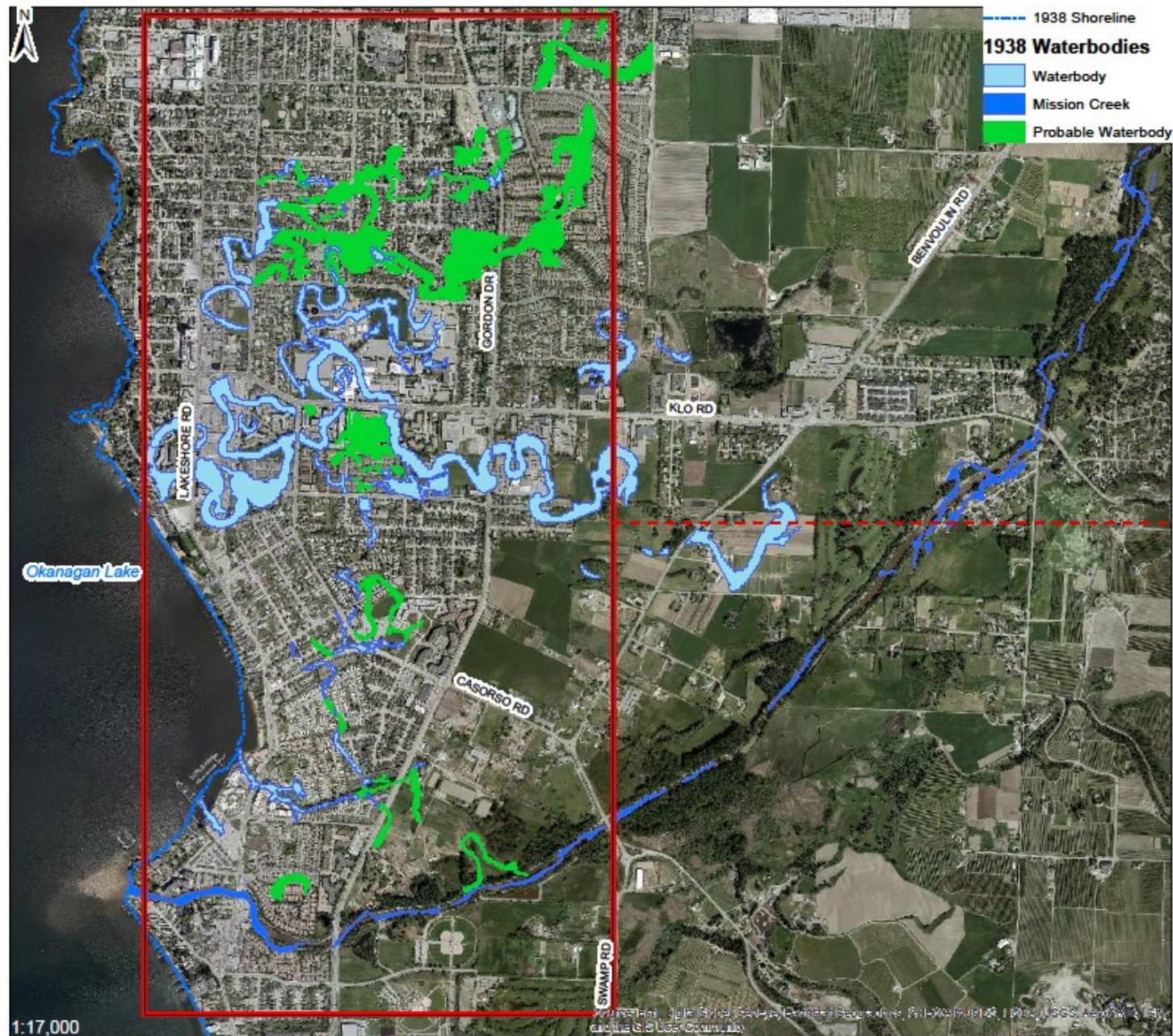


*"Mind what you have learned!  
...Save you it can."*





# Presence of 1938 Oxbow Lakes and Surface Water in Comparison to Modern Day Kelowna







# Kelowna Integrated Water





agriculture





flood protection



A narrow stream flows through a dense thicket of tall reeds and bare branches. The water is dark and reflects the surrounding vegetation. The scene is captured in a cinematic style with soft lighting.

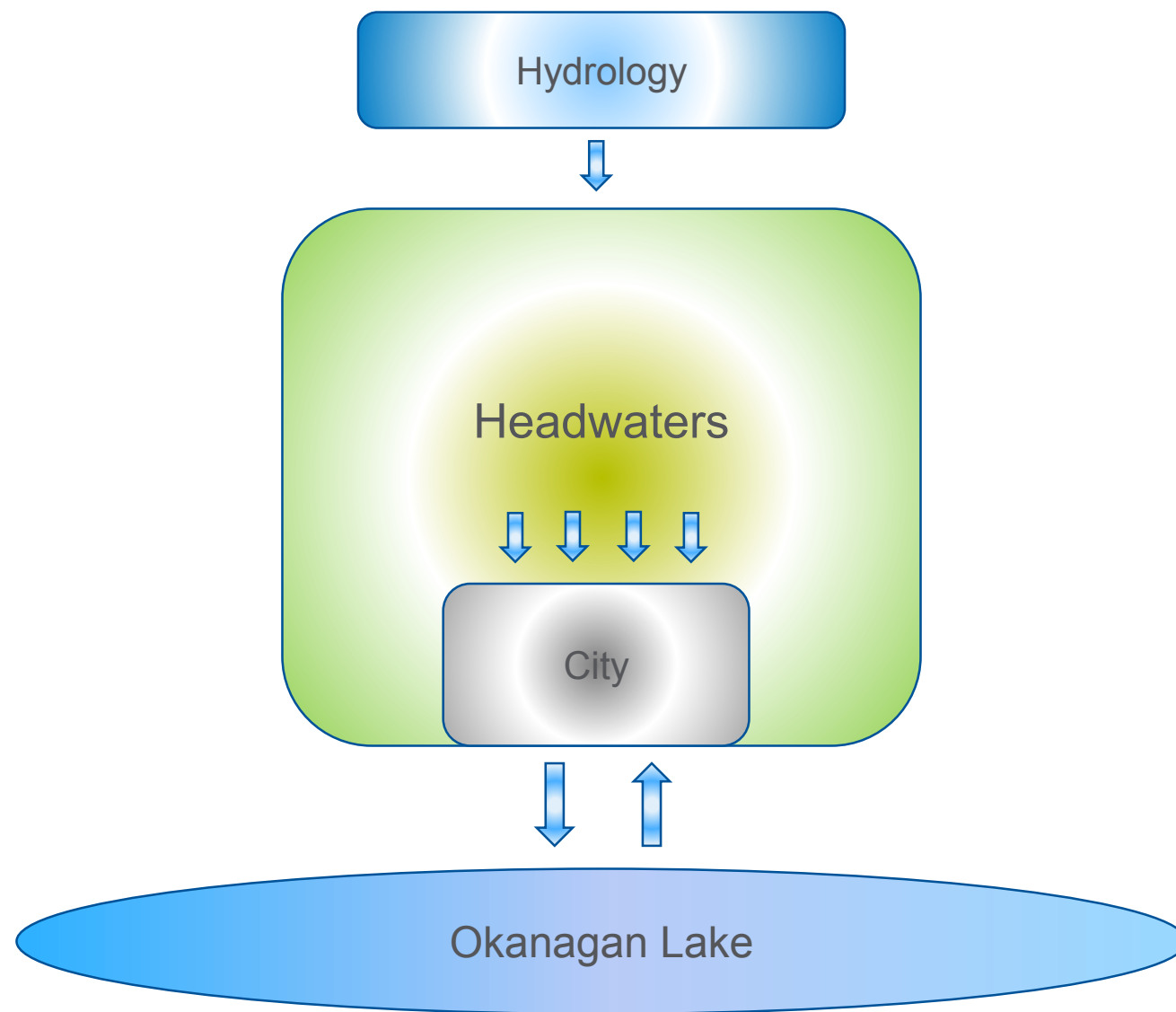
environmental flows



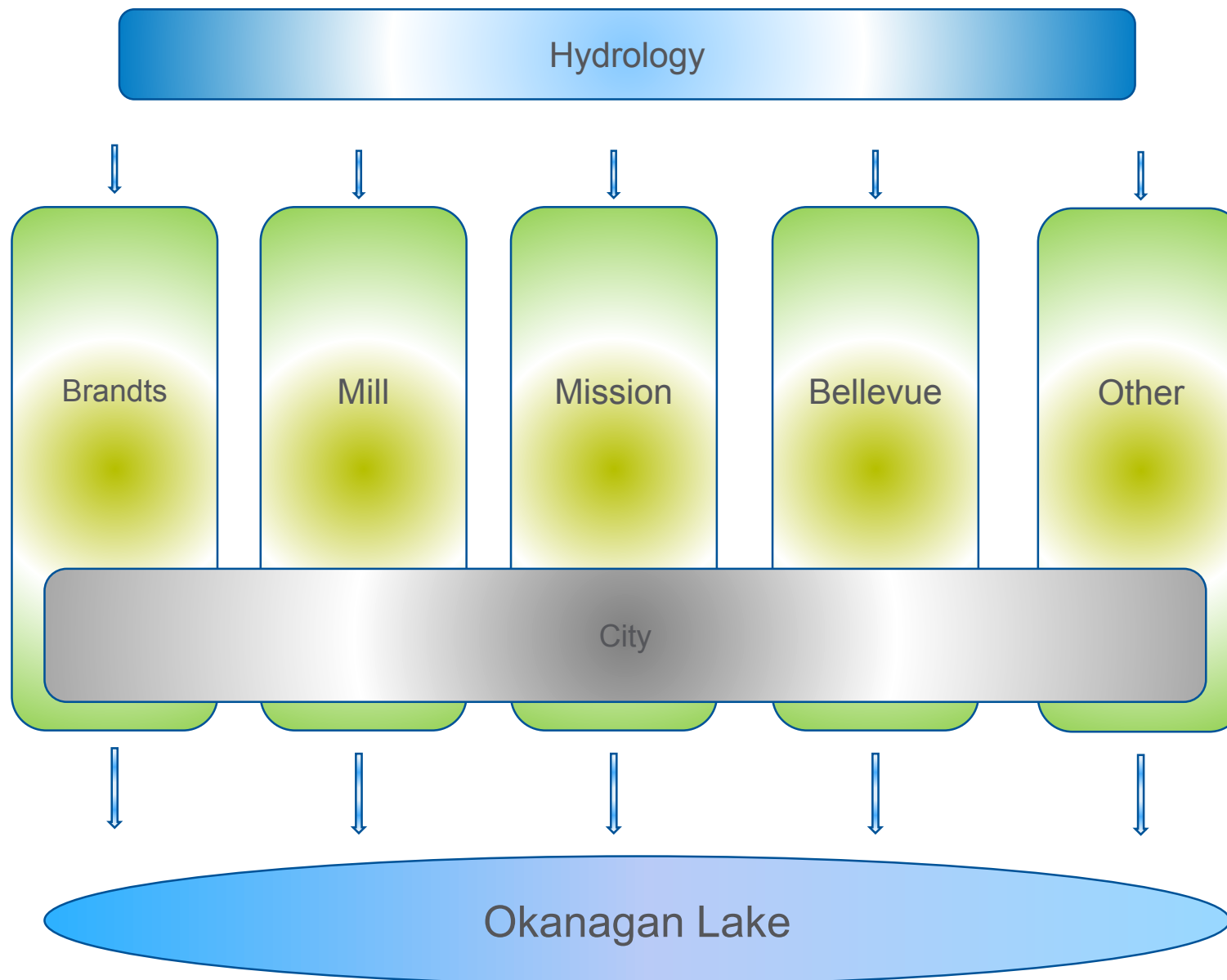
An aerial photograph of a large, winding reservoir, likely a dammed river or lake, surrounded by dense forest and rolling hills. The water is a deep blue, and the surrounding land is covered in green trees with some autumnal yellowing. The reservoir has several islands and peninsulas. In the background, more hills and mountains are visible under a clear sky.

area-wide water management











# Current Work – Partner Collaboration

- ▶ Develop purpose, goals & assumptions
- ▶ Area-based water planning
  - ▶ Mapping & GIS
  - ▶ Data Collection
  - ▶ Flood Mitigation Planning
- ▶ Integrated water planning
- ▶ Communications & engagement
- ▶ Resource planning



# Summary – Water Management Future

- ▶ Need to build our partnerships
- ▶ Need to engage/consult with others
- ▶ Need to undertake strategic management planning
  - ▶ Assess current situation
  - ▶ Develop vision and goals
  - ▶ Recognize the 'gaps' to achieve our vision
  - ▶ Undertake best practice reviews
  - ▶ Develop a multi-agency management approach to area water management for Kelowna



# Discussion & Questions

