
CITY OF KELOWNA

MEMORANDUM

Date: August 28, 2018
File No.: Z18-0096
To: Suburban and Rural Planning (BC)
From: Development Engineering Manager (JK)
Subject: 435 Molnar Rd. RU1 to RU1c

Development Engineering has the following comments and requirements associated with this application to rezone from RU1 to RU1c to facilitate the development of a carriage house. The servicing requirements outlined in this report will be a requirement of this development.

1. Domestic Water and Fire Protection

The property is located within the Rutland Water District (RWD) service area. The water system must be capable of supplying domestic and fire flow demands of the project in accordance with the Subdivision, Development & Servicing Bylaw. The developer is responsible, if necessary, to arrange with RWD staff for any service improvements.

2. Sanitary Sewer


- a) Our records indicate that this property is currently serviced with a 100mm-diameter sanitary sewer service with an inspection chamber which is adequate for this application. A brooks box will be required to be placed on the inspection chamber.

3. Development Permit and Site Related Issues

- a) Direct the roof drains onto splash pads.
b) Original driveway width is acceptable for this application.

4. Electric Power and Telecommunication Services

It is the applicant's responsibility to make a servicing application with the respective electric power, telephone and cable transmission companies to arrange for service upgrades to these services which would be at the applicant's cost.

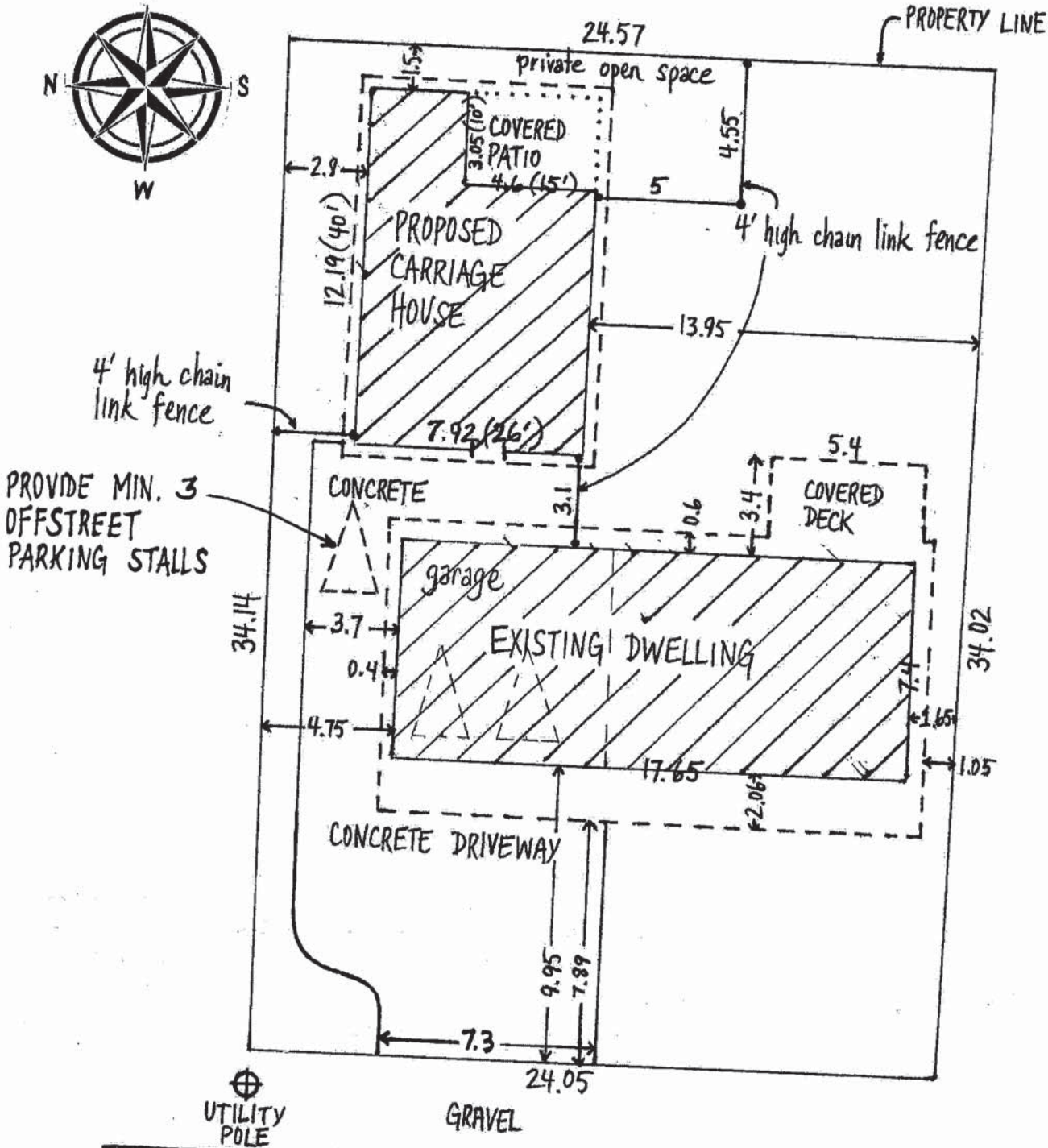


James Kay, P. Eng.
Development Engineering Manager

agm

435 Molnar Rd.

SCALE: 1 cm = 2 m



MOLNAR ROAD

GRAVEL

SIDEWALK

SCHEDULE A

This forms part of application
Z18-0096

Planner Initials **BC**

City of Kelowna
COMMUNITY PLANNING