

# CITY OF KELOWNA

## BYLAW NO. 11697

### Road Closure and Removal of Highway Dedication Bylaw (Portion of Raymer Road)

**A bylaw pursuant to Section 40 of the Community Charter to authorize the City to permanently close and remove the highway dedication of a portion of highway on Raymer Road**

---

NOW THEREFORE, the Municipal Council of the City of Kelowna, in open meeting assembled, hereby enacts as follows:

1. That portion of highway attached as Schedule "A" comprising 419.1m<sup>2</sup> shown in bold black as Road to be Closed on the Reference Plan prepared by Simone Porcellato, B.C.L.S., is hereby stopped up and closed to traffic and the highway dedication removed.
2. The Mayor and City Clerk of the City of Kelowna are hereby authorized to execute such conveyances, titles, survey plans, forms and other documents on behalf of the said City as may be necessary for the purposes aforesaid.

Read a first, second and third time by the Municipal Council this 19<sup>th</sup> day of November, 2018.

Adopted by the Municipal Council of the City of Kelowna this

---

Mayor

---

City Clerk

Schedule "A"

REFERENCE PLAN TO ACCOMPANY BYLAW NUMBER  
 BL11697 (CITY OF KELOWNA) TO CLOSE PART OF ROAD  
 DEDICATED ON PLAN KAP54746, DL 580A, SDYD.  
 PURSUANT TO SECTION 120 OF THE LAND TITLE ACT AND SECTION 40 OF THE  
 COMMUNITY CHARTER.

PLAN EPP87458

BCGS 82E.083  
 SCALE 1:500



THE INTENDED PLAT SIZE OF THIS PLAN IS 432 mm IN WIDTH  
 BY 560 mm IN HEIGHT (11-1/2" x 22") WHEN PLOTTED AT A SCALE  
 OF 1:500 METRIC.

LEGEND

- Control Monument
- Standard Iron Post Found
- Standard Iron Post Set

Distances shown are horizontal, ground-level distances, in  
 metres and decimals thereof.

Integrated Survey Area No.4, City of Kelowna, NAD83 (CSRS)  
 4.0.0.BC.1.

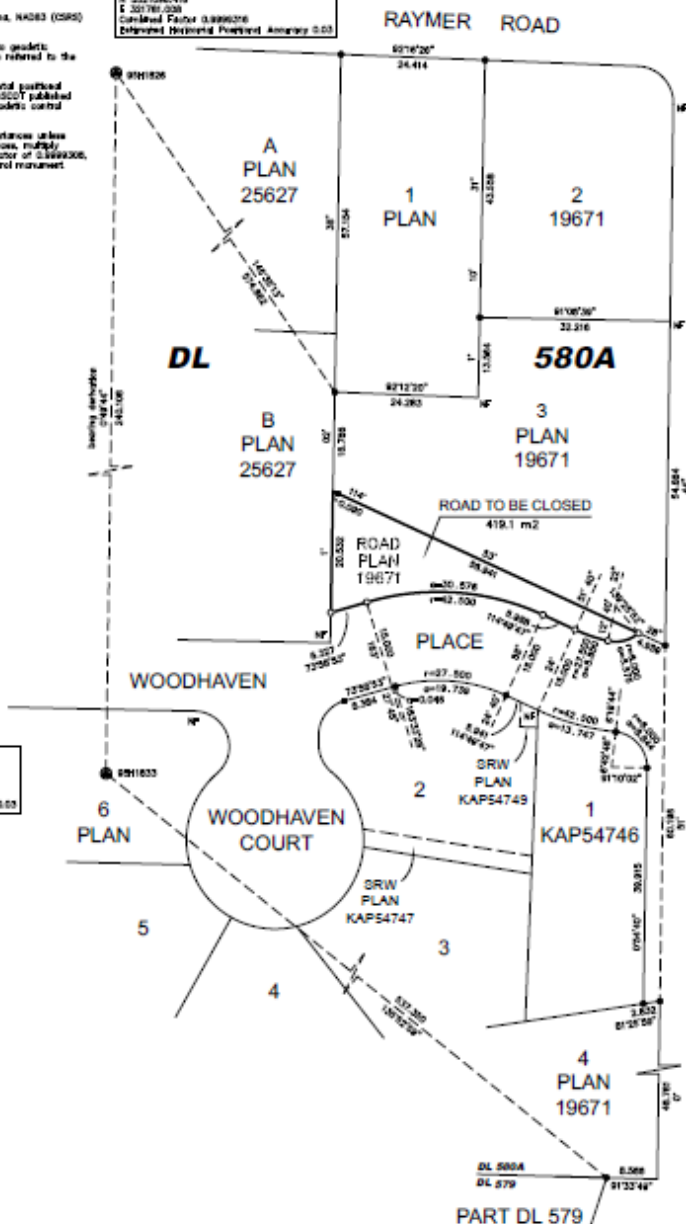
Grid bearings are derived from GNSS ties to geodetic  
 monuments GSN026 and GSN033 and are referred to the  
 central meridian of UTM zone 11.

The UTM coordinates and estimated horizontal positional  
 accuracy achieved are derived from the MASCO published  
 coordinates and standard deviation for geodetic control  
 monuments GSN026 and GSN033.

This plan shows horizontal, ground-level distances unless  
 otherwise specified. To compute grid distances, multiply  
 ground-level distances by the combined factor of 0.999926,  
 which has been derived from geodetic control monument  
 GSN033.

Control Monument GSN026  
 NAD83(CSRS) 4.0.0.BC.1 - Zone 11  
 E 502706.419  
 N 507780.020  
 Combined Factor 0.999926  
 Enhanced Horizontal Positional Accuracy 0.03

Control Monument GSN033  
 NAD83(CSRS) 4.0.0.BC.1 - Zone 11  
 E 507777.538  
 N 502683.329  
 Combined Factor 0.999926  
 Enhanced Horizontal Positional Accuracy 0.03



**AllTerra**  
 Land Surveying Ltd.  
 www.allterra.ca  
 250-752-0722 Fax 250-752-0729

This plan lies with the Regional District of  
 Central Okanagan.  
 The field survey represented by this plan was  
 completed on the 3rd day of October, 2016.  
 Bruce Partridge, BCLS, PLS