

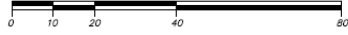
Schedule A

**REFERENCE PLAN TO ACCOMPANY BYLAW NO. 11680  
(City of Kelowna) TO CLOSE PART OF ROAD DEDICATED  
ON PLAN 4375, SECTION 35, TOWNSHIP 26,  
OSOYOOS DIVISION YALE DISTRICT**

PLAN EPP87493

PURSUANT TO SECTION 120 OF THE LAND TITLE ACT  
AND SECTION 40 OF THE COMMUNITY CHARTER

BCGS 82E.094



The intended plot size of this plan is 432mm in width by 560mm in height (C size) when plotted at a scale of 1:750  
(All distances are in metres)

**LEGEND**

- Denotes Standard Iron post (Type 5) found
- Denotes Standard Iron post (Type 5) placed
- ⊙ Denotes Control Monument found
- NF Denotes nothing found

Integrated Survey Area No. 4, City of Kelowna,  
NA063 (CSRS) 4.0.0.BC.1

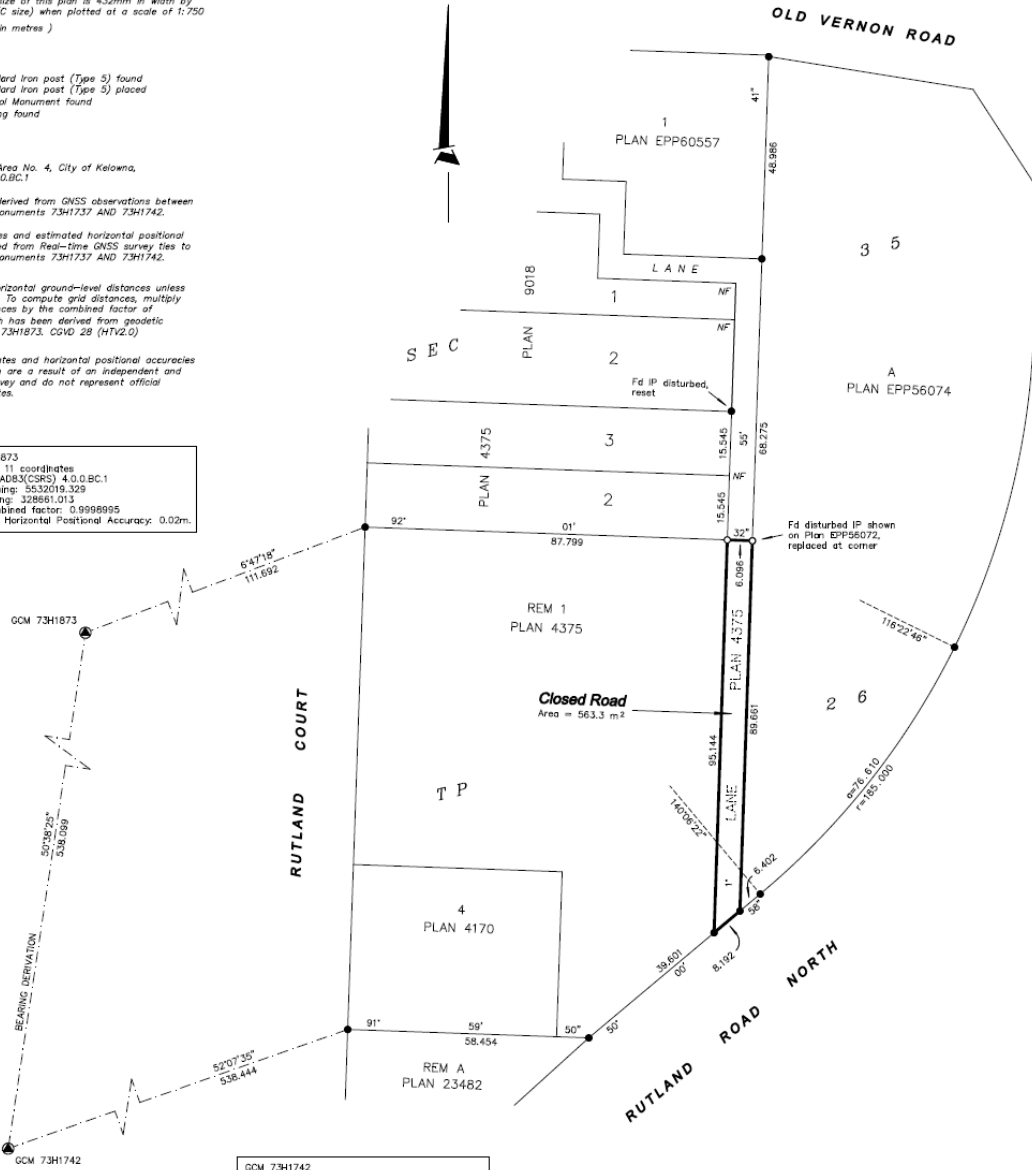
Grid bearings are derived from GNSS observations between  
geodetic control monuments 73H1737 AND 73H1742.

The UTM coordinates and estimated horizontal positional  
accuracy are derived from Real-time GNSS survey ties to  
geodetic control monuments 73H1737 AND 73H1742.

This plan shows horizontal ground-level distances unless  
otherwise specified. To compute grid distances, multiply  
ground-level distances by the combined factor of  
of 0.9998985 which has been derived from geodetic  
control monument 73H1873. CGVD 28 (HTV2.0)

Note: The coordinates and horizontal positional accuracies  
shown on this plan are a result of an independent and  
accurate GNSS survey and do not represent official  
published coordinates.

GCM 73H1873  
UTM Zone 11 coordinates  
Datum: NAD83(CSRS) 4.0.0.BC.1  
UTM northing: 5532015.329  
UTM easting: 328661.013  
Point combined factor: 0.9998995  
Estimated Horizontal Positional Accuracy: 0.02m.



GCM 73H1742  
UTM Zone 11 coordinates  
Datum: NAD83(CSRS) 4.0.0.BC.1  
UTM northing: 5531678.108  
UTM easting: 328245.309  
Point combined factor: 0.9999016  
Estimated Horizontal Positional Accuracy: 0.02m.

**RUNNALLS DENBY**  
british columbia land surveyors  
259A Lawrence Avenue Phone: (250)763-7322  
Kelowna, B.C. Fax: (250)763-4413  
V1Y 6L2 Email: rob@runnallsdenby.com

DWG. No.: 15074 CLOSED ROAD FILE: 15074

This plan lies within the Regional District of Central Okanagan.

The field survey represented by this plan was completed on  
the 16th day of October, 2018.  
Robert T. Macdonald, BCLS 873