

CITY OF KELOWNA

BYLAW NO. 11697

Road Closure and Removal of Highway Dedication Bylaw (Portion of Raymer Road)

A bylaw pursuant to Section 40 of the Community Charter to authorize the City to permanently close and remove the highway dedication of a portion of highway on Raymer Road

NOW THEREFORE, the Municipal Council of the City of Kelowna, in open meeting assembled, hereby enacts as follows:

1. That portion of highway attached as Schedule "A" comprising 419.1m² shown in bold black as Road to be Closed on the Reference Plan prepared by Simone Porcellato, B.C.L.S., is hereby stopped up and closed to traffic and the highway dedication removed.
2. The Mayor and City Clerk of the City of Kelowna are hereby authorized to execute such conveyances, titles, survey plans, forms and other documents on behalf of the said City as may be necessary for the purposes aforesaid.

Read a first, second and third time by the Municipal Council this

Adopted by the Municipal Council of the City of Kelowna this

Mayor

City Clerk

Schedule "A"

REFERENCE PLAN TO ACCOMPANY BYLAW NUMBER
 BL11697 (CITY OF KELOWNA) TO CLOSE PART OF ROAD
 DEDICATED ON PLAN KAP54746, DL 580A, SDYD.
 PURSUANT TO SECTION 120 OF THE LAND TITLE ACT AND SECTION 40 OF THE
 COMMUNITY CHARTER.

PLAN EPP87458

BCGS 82E.083
 SCALE 1:500



THE INTENDED PLAT SIZE OF THIS PLAN IS 432 mm IN WIDTH
 BY 560 mm IN HEIGHT (5'-10 1/2") WHEN PLOTTED AT A SCALE
 OF 1:500 METRE.

LEGEND

- Control Monument
- Standard Iron Post Found
- Standard Iron Post Set

Distances shown are horizontal, ground-level distances, in
 metres and decimals thereof.

Integrated Survey Area No.4, City of Kelowna, NAD83 (CSRS)
 4.0.0.BC.1.

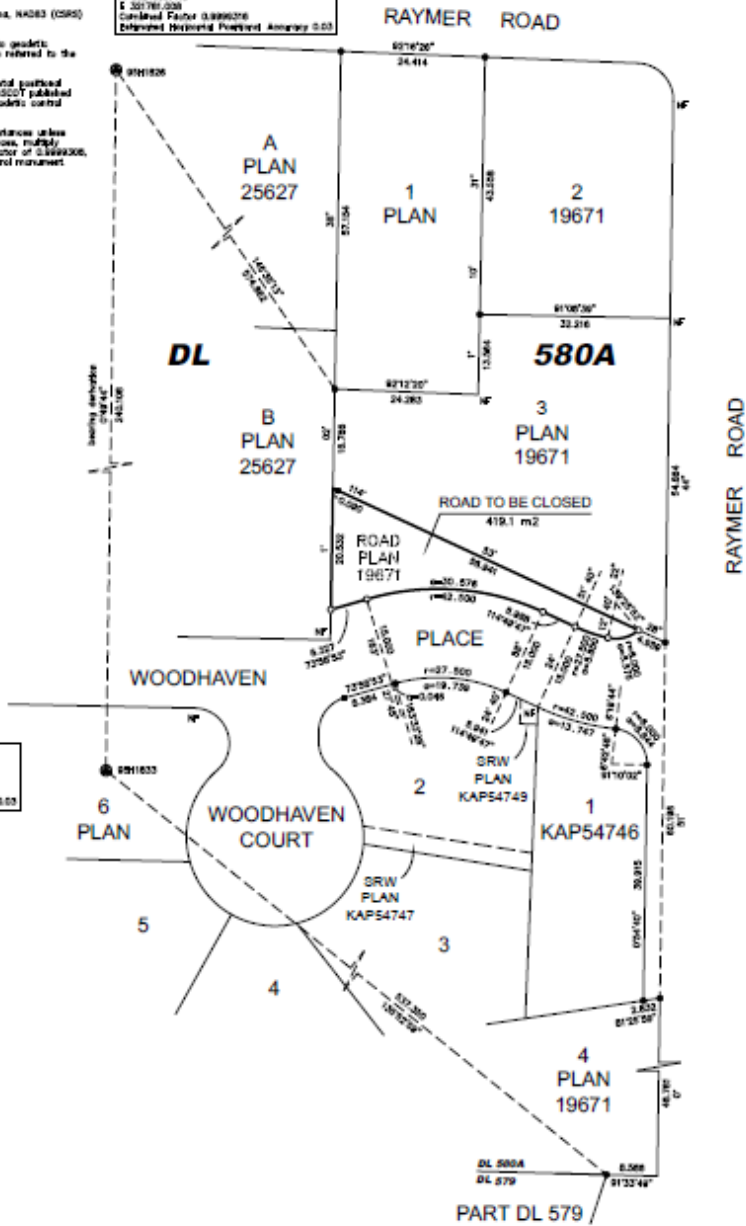
Grid bearings are derived from GNSS ties to geodetic
 monuments GSN026 and GSN033 and are referred to the
 central meridian of UTM zone 11.

The UTM coordinates and estimated horizontal positional
 accuracy achieved are derived from the MASCO published
 coordinates and standard deviation for geodetic control
 monuments GSN026 and GSN033.

This plan shows horizontal, ground-level distances unless
 otherwise specified. To compute grid distances, multiply
 ground-level distances by the combined factor of 0.999926,
 which has been derived from geodetic control monument
 GSN033.

Control Monument GSN026
 NAD83(CSRS) 4.0.0.BC.1 - Zone 11
 E 502706.419
 N 507780.020
 Combined Factor 0.999926
 Enhanced Horizontal Positional Accuracy 0.03

Control Monument GSN033
 NAD83(CSRS) 4.0.0.BC.1 - Zone 11
 E 502706.419
 N 507780.020
 Combined Factor 0.999926
 Enhanced Horizontal Positional Accuracy 0.03



AllTerra
 Land Surveying Ltd.
 www.allterra.ca
 250-752-0722 Fax 250-752-0721

This plan lies with the Regional District of
 Central Okanagan.
 The field survey represented by this plan was
 completed on the 31st day of October, 2016.
 Bruce Partridge, BCLS, PLSI