

Title here

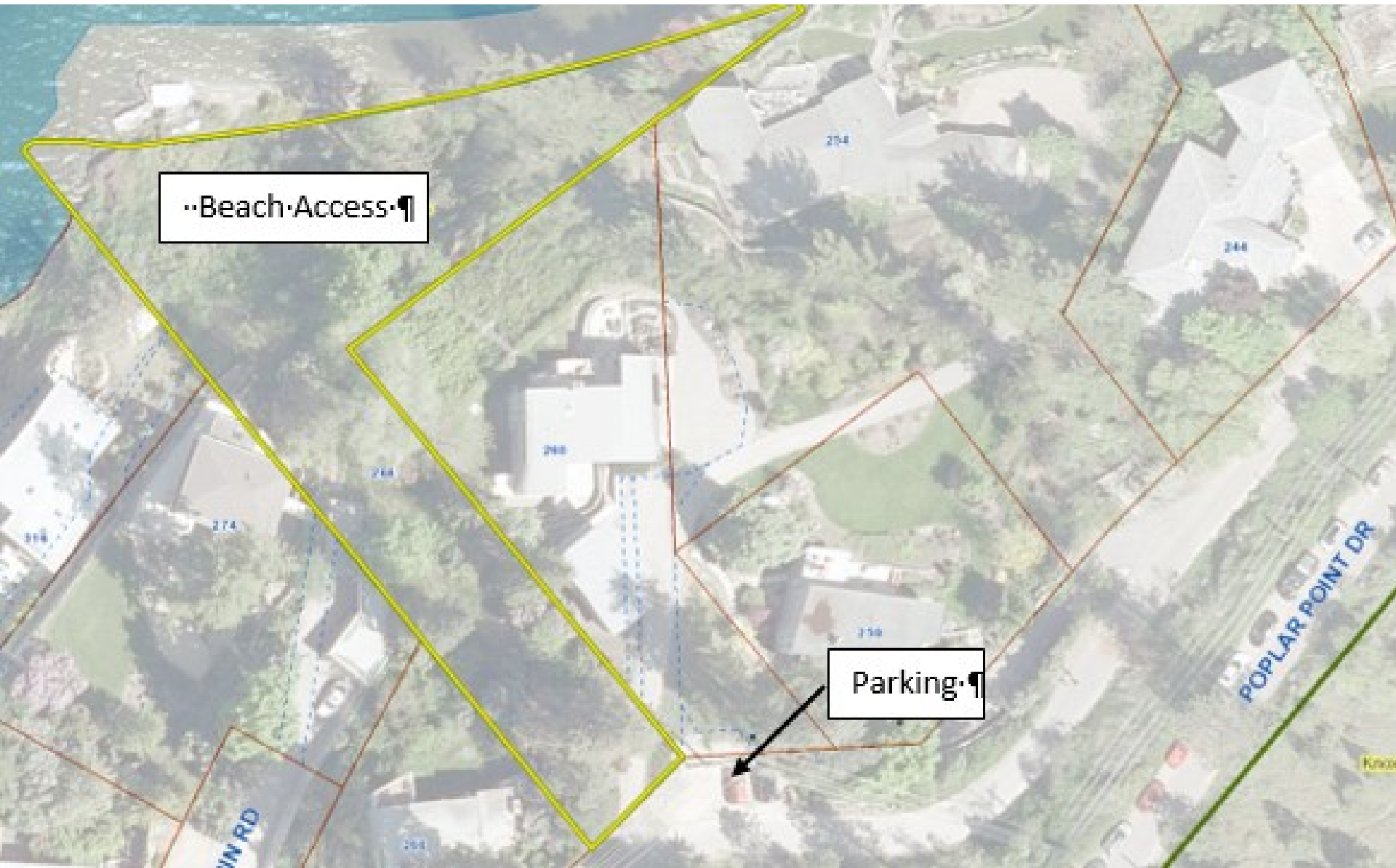


Interim Parks Access – Poplar Point

October 1, 2018









Parking area on Poplar Point Drive



Frontage on Poplar Point Drive



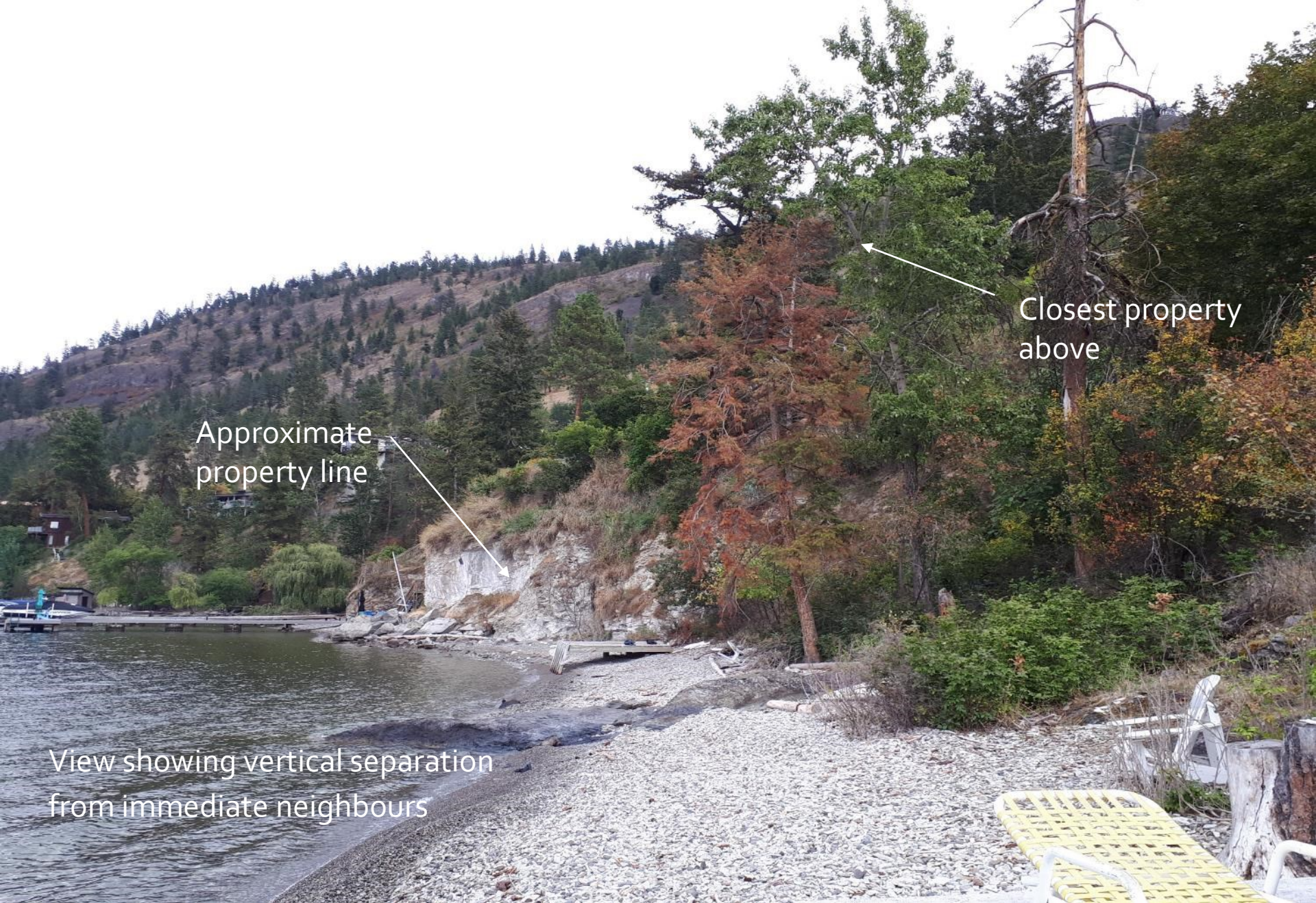
First glimpse of the lake



View looking east



View looking west



Approximate
property line

Closest property
above

View showing vertical separation
from immediate neighbours



Approximate
property line

View to the southwest
from rocky point



View looking up the trail from the beach



Existing steps



View looking north



Questions?

For more information, visit kelowna.ca.

