



City of
Kelowna

KELOWNA WATER UTILITY

Consumption Update



KELOWNA WATER UTILITY

- ▶ Approximately 17,000 service connections
- ▶ Serving just over half the population
- ▶ Rest served by Improvement Districts, the 4 largest are:
 - ▶ Black Mountain Irrigation District
 - ▶ Glenmore Ellison Improvement District
 - ▶ Rutland Waterworks
 - ▶ South East Kelowna Irrigation District

KELOWNA WATER CONSERVATION

- ▶ Over last 20 years per capita consumption from single family homes dropped >20%
 - ▶ Universal water metering
 - ▶ Increasing block rate structure
 - ▶ Community conserving water
 - ▶ Lower flow fixtures

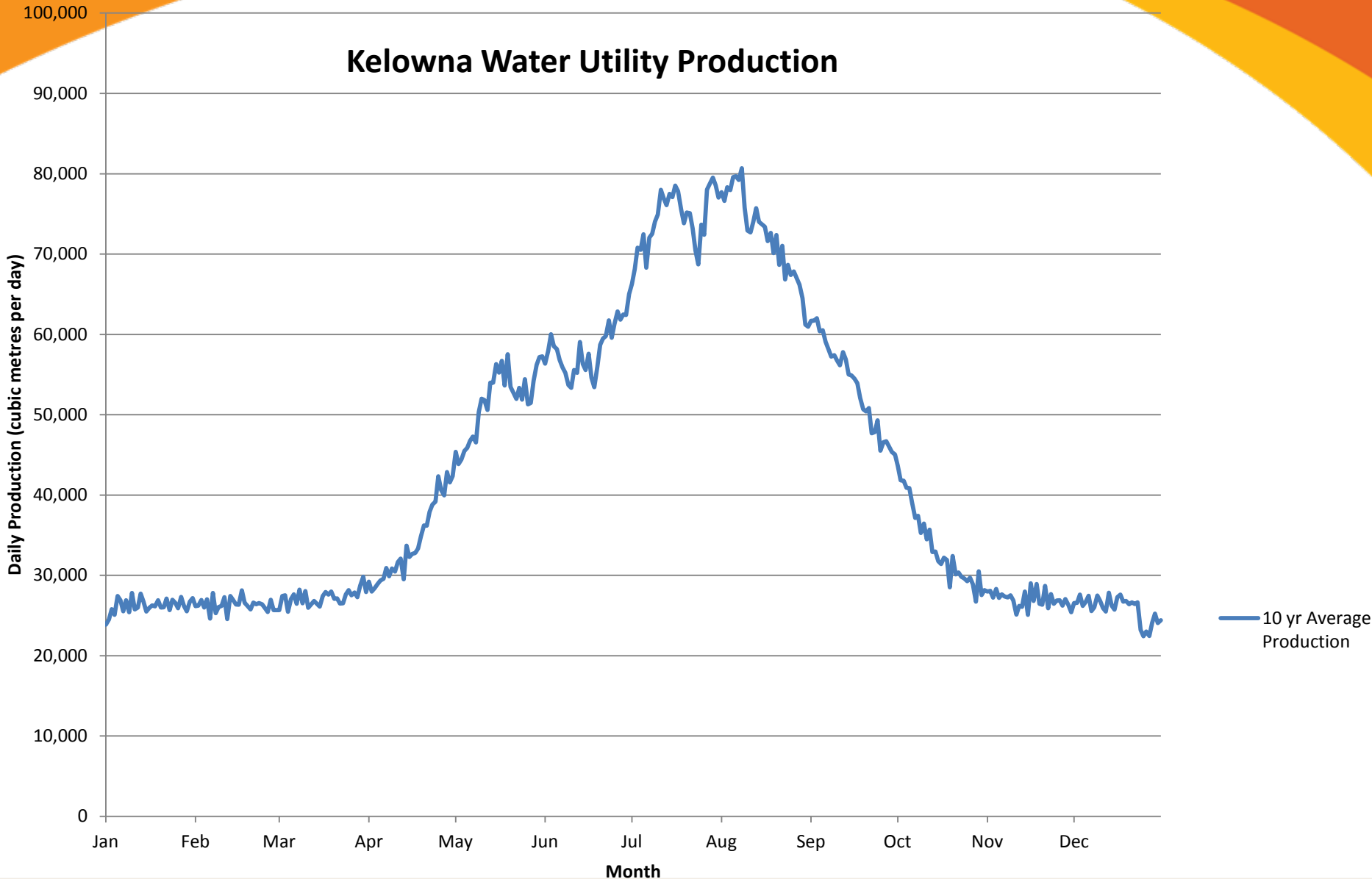
DROUGHT...

- ▶ July 17 Province declared Okanagan Valley at Level 3 Drought
- ▶ July 27, increased to Level 4
- ▶ Both request 30% voluntary water use reduction

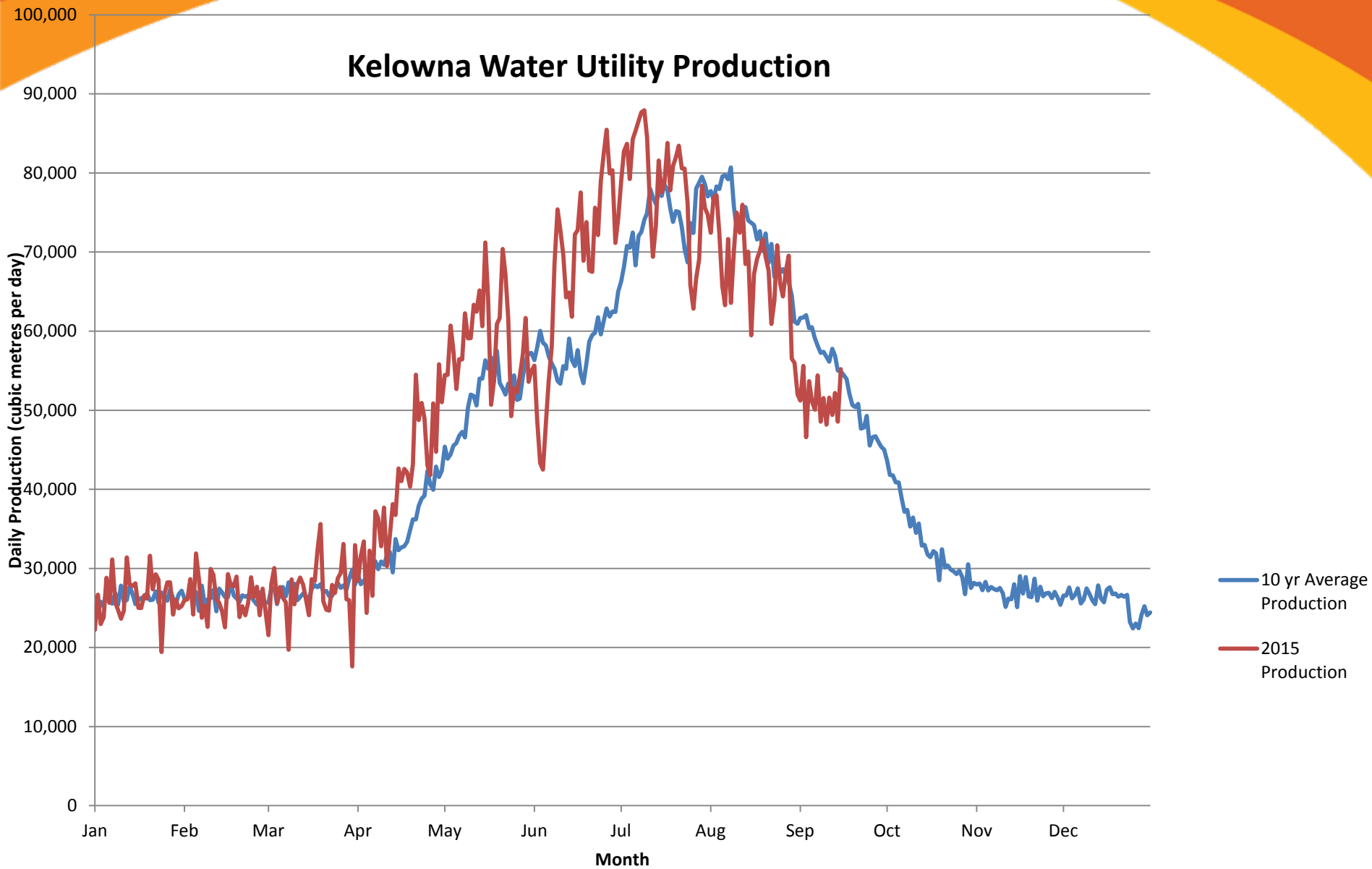
...DROUGHT

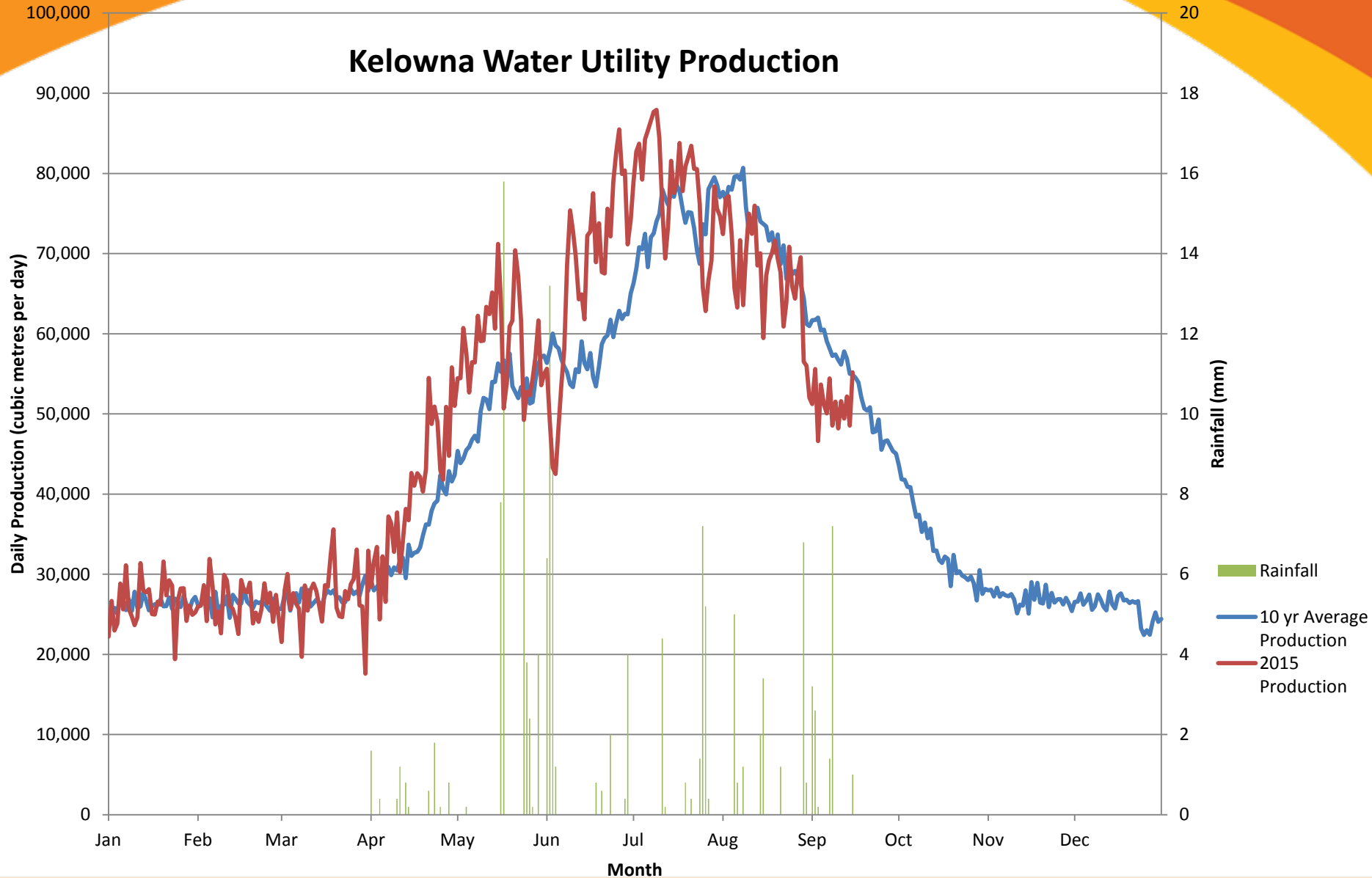
- ▶ August 4 City Implemented Stage 1:
 - ▶ Odd/even irrigation
 - ▶ Parks reduced water consumption
 - ▶ Public Communications
 - ▶ Print and radio ads
 - ▶ Billing reminder
 - ▶ Road sign
 - ▶ Website / Social media

Kelowna Water Utility Production

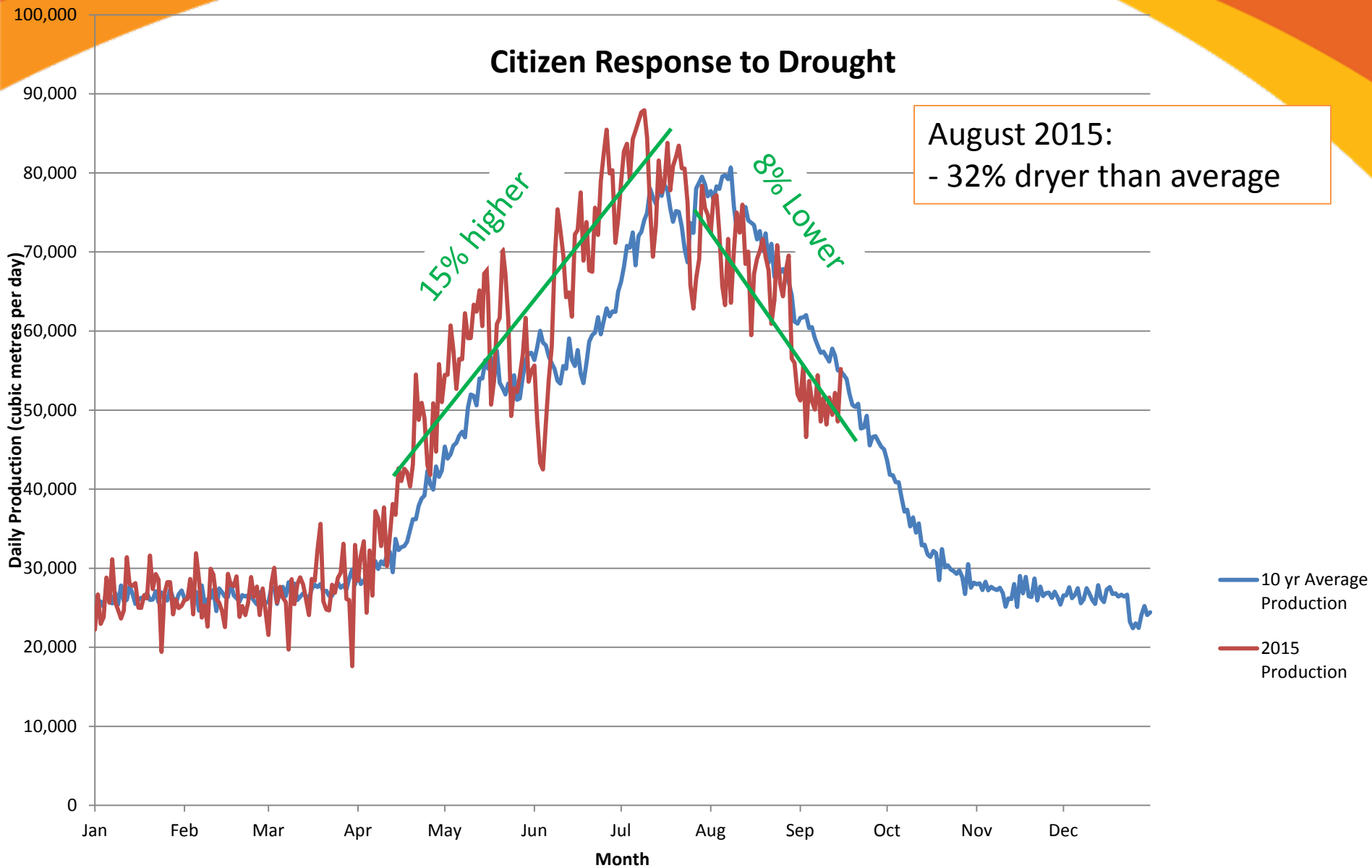


Kelowna Water Utility Production





Citizen Response to Drought



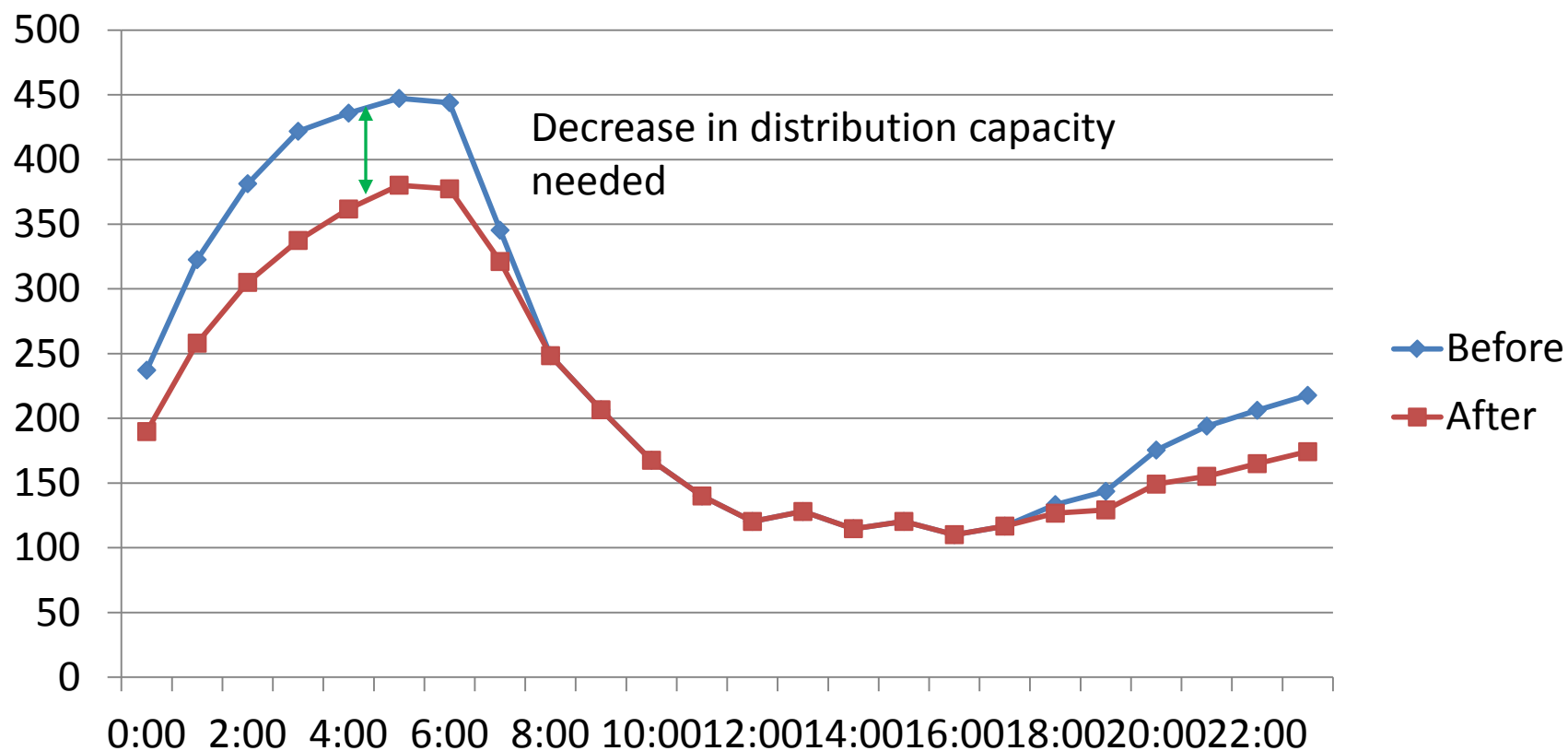
RESPONSE TO DROUGHT

- ▶ Kelowna user response to drought was significant
 - ▶ Daily use dropped from 15% above average to 8% below average
 - ▶ Drought awareness and irrigation restrictions

IRRIGATION RESTRICTIONS - BENEFITS...

- ▶ Main benefit is reducing peak to distribution system
 - ▶ Only half users can irrigate on any one day
 - ▶ Extend life of distribution infrastructure, or allow smaller infrastructure
- ▶ Estimated 0-10% water reduction long term

SAMPLE IMPACT OF RESTRICTIONS ON PEAK



...IRRIGATION RESTRICTIONS BENEFITS

- ▶ More consistent rules and process for all Kelowna and Okanagan Value users
 - ▶ Kelowna only major city without irrigation restrictions
- ▶ Enhance culture of conservation
- ▶ Promotes healthier, resilient lawn

IRRIGATION RESTRICTIONS - CHALLENGES

- ▶ User effort
 - ▶ Program controllers
 - ▶ Be attentive to day of week
 - ▶ Some large lot challenges (exemptions if meeting intent)
 - ▶ Public expectation / impact on parks

RECOMMENDATIONS

- ▶ Receive report for information
- ▶ Council direct staff to implement permanent odd/even water restrictions
- ▶ Bylaws be amended to implement restrictions and allow for effective enforcement options