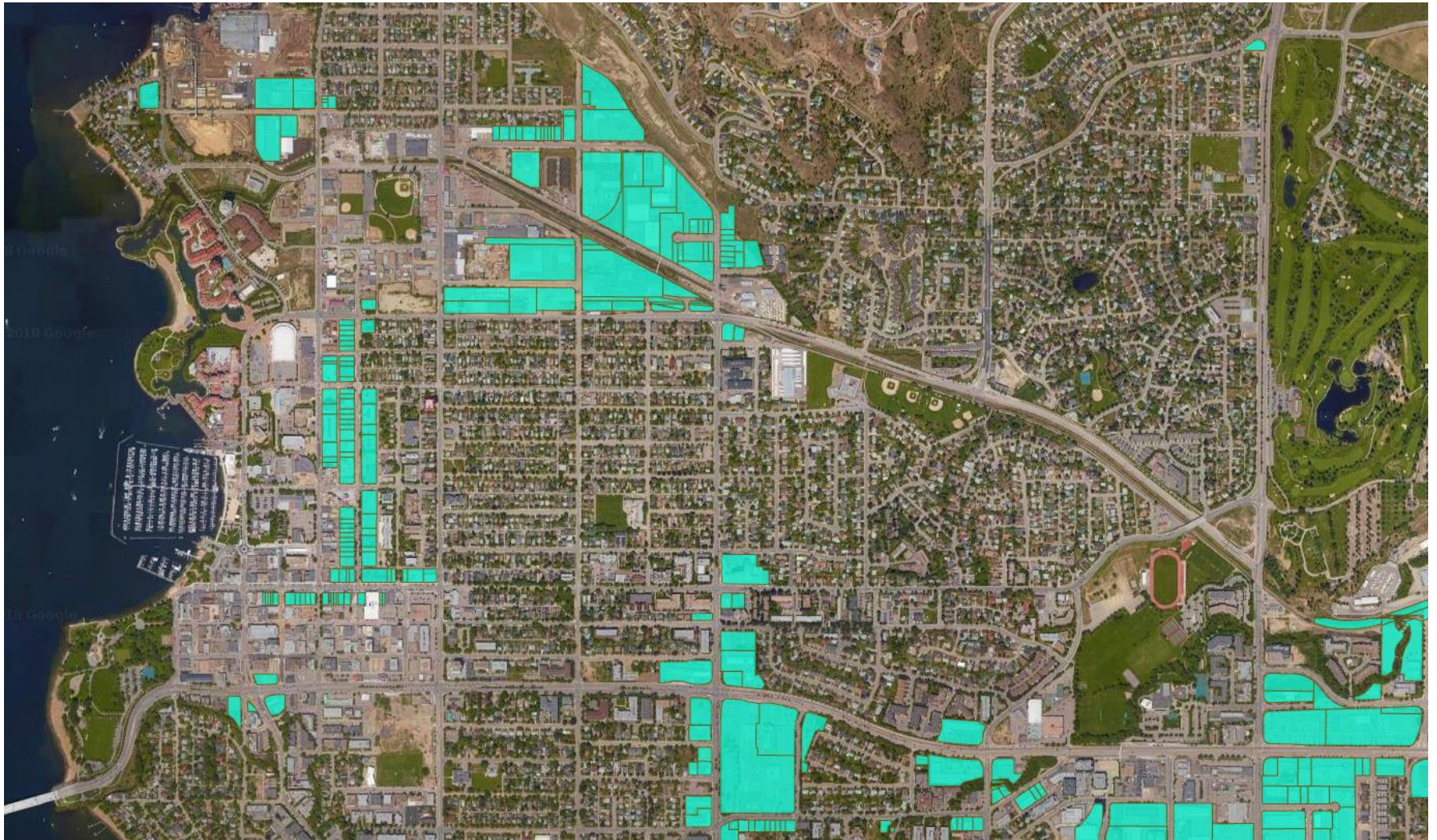


Attachment "B" – Draft Areas Where Retail Cannabis Sales May Be Permitted

Areas shown are those with higher concentrations of properties which may allow a retail cannabis sales establishment under the proposed TA18-0008

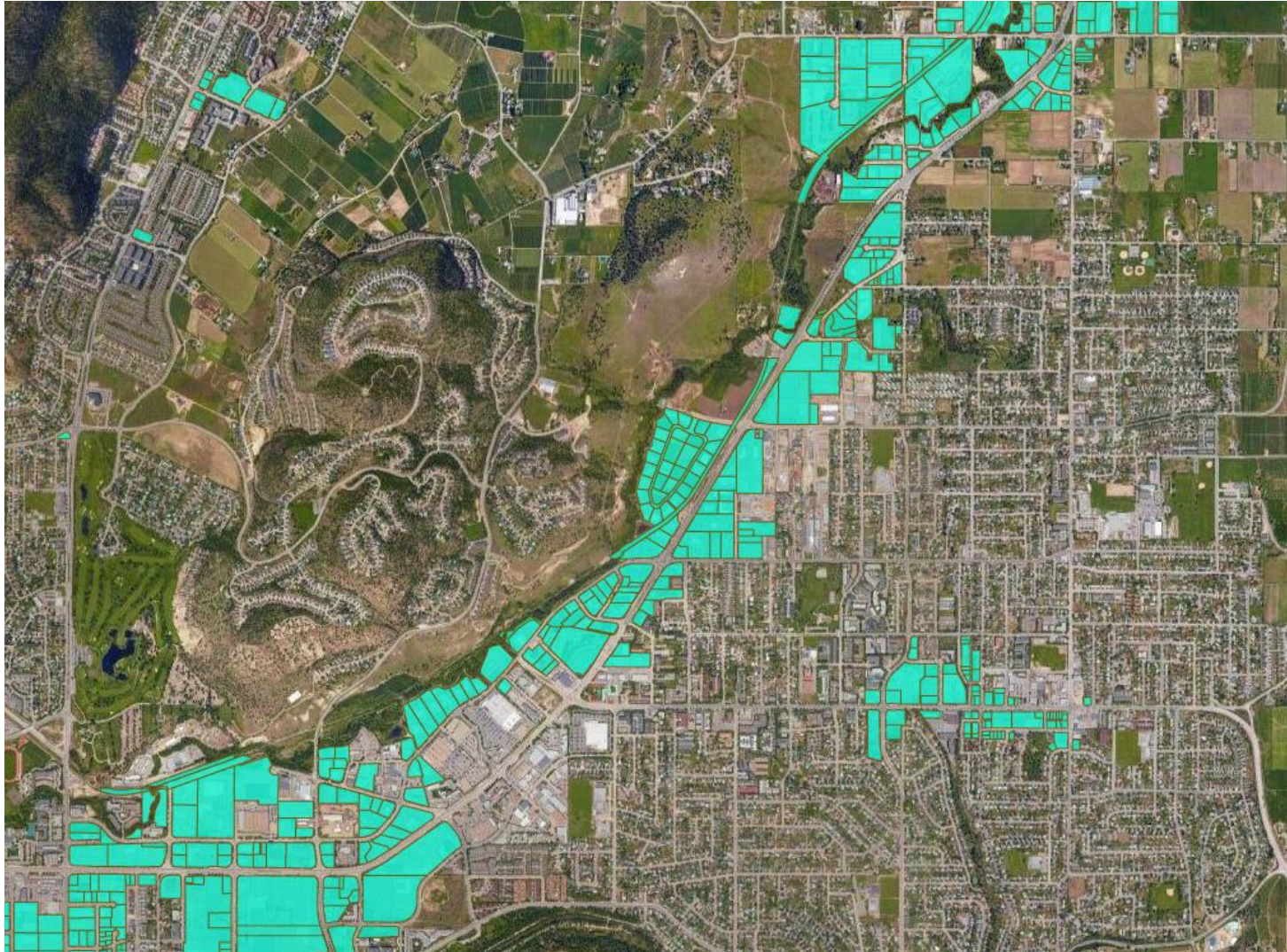
Downtown and Central Highway 97



Attachment "B" – Draft Areas Where Retail Cannabis Sales May Be Permitted

Areas shown are those with higher concentrations of properties which may allow a retail cannabis sales establishment under the proposed TA18-0008

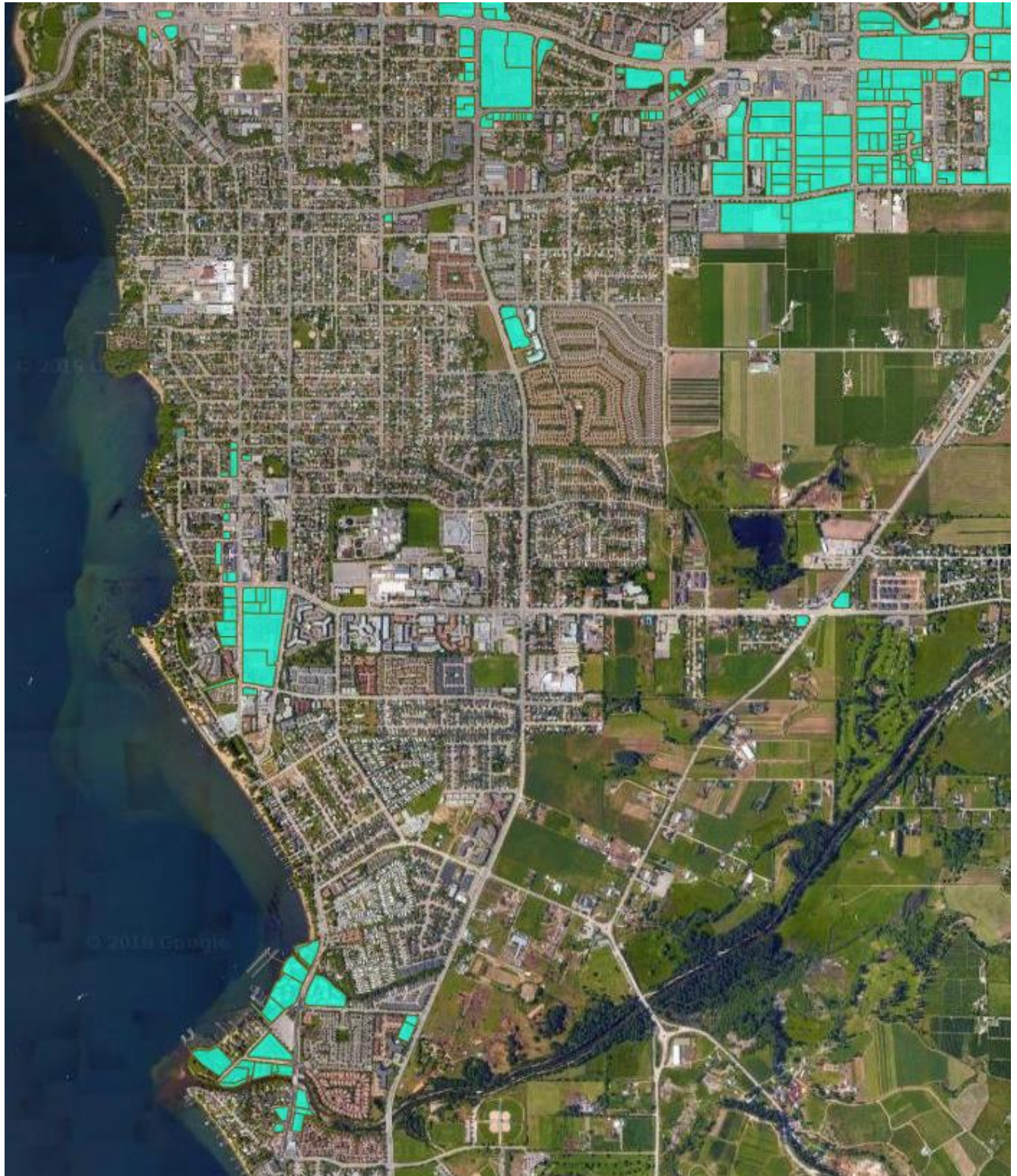
Glenmore, Rutland and Highway 97 (from Spall Rd to Sexsmith Rd)



Attachment "B" – Draft Areas Where Retail Cannabis Sales May Be Permitted

Areas shown are those with higher concentrations of properties which may allow a retail cannabis sales establishment under the proposed TA18-0008

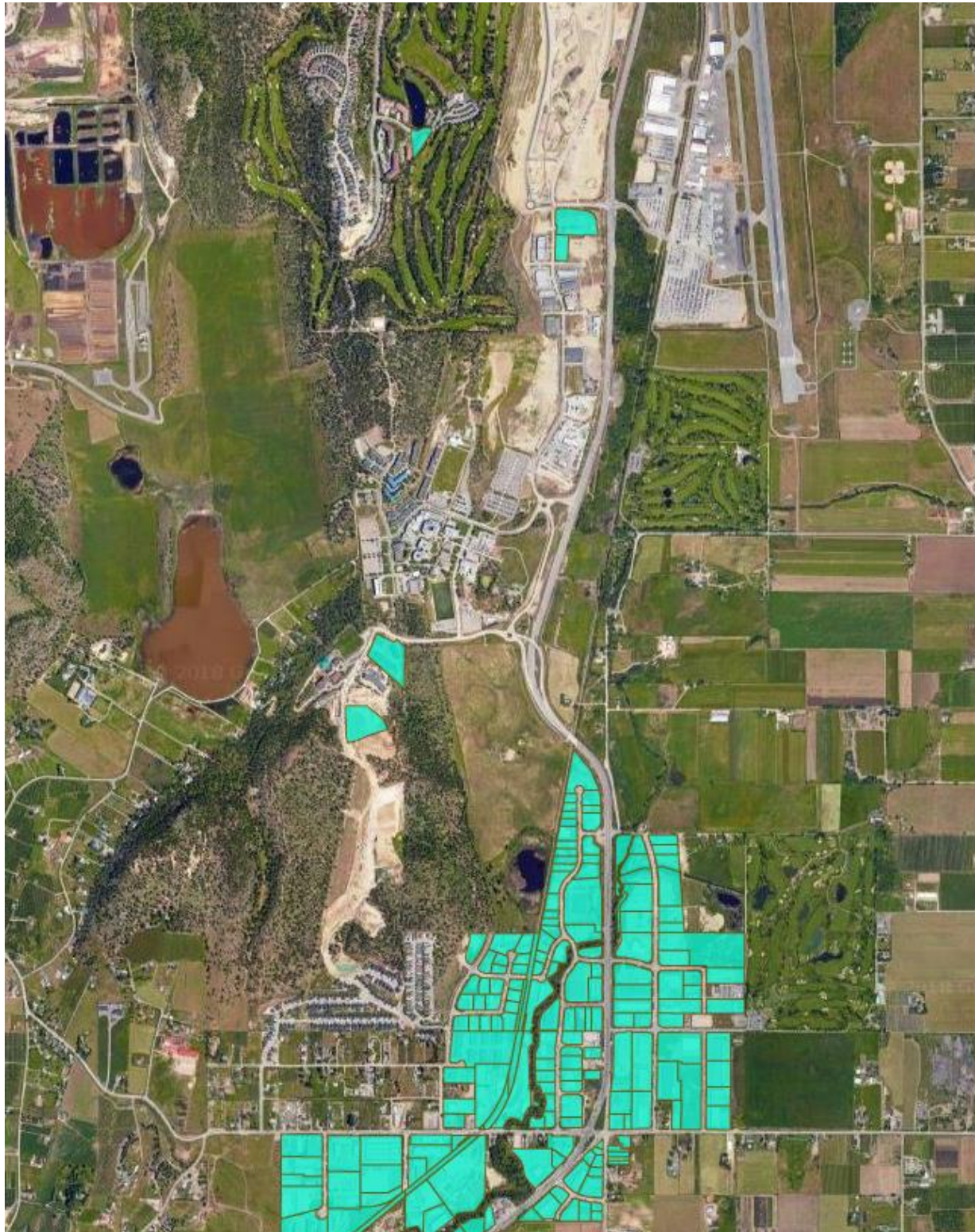
Central Kelowna and North Mission



Attachment "B" – Draft Areas Where Retail Cannabis Sales May Be Permitted

Areas shown are those with higher concentrations of properties which may allow a retail cannabis sales establishment under the proposed TA18-0008

Highway 97 Corridor North of Sexsmith Rd



Attachment "B" – Draft Areas Where Retail Cannabis Sales May Be Permitted

Areas shown are those with higher concentrations of properties which may allow a retail cannabis sales establishment under the proposed TA18-0008

Lake Country / Kelowna Boundary

