

Plaza License & Maint. Agreement Proposed Westcorp Building

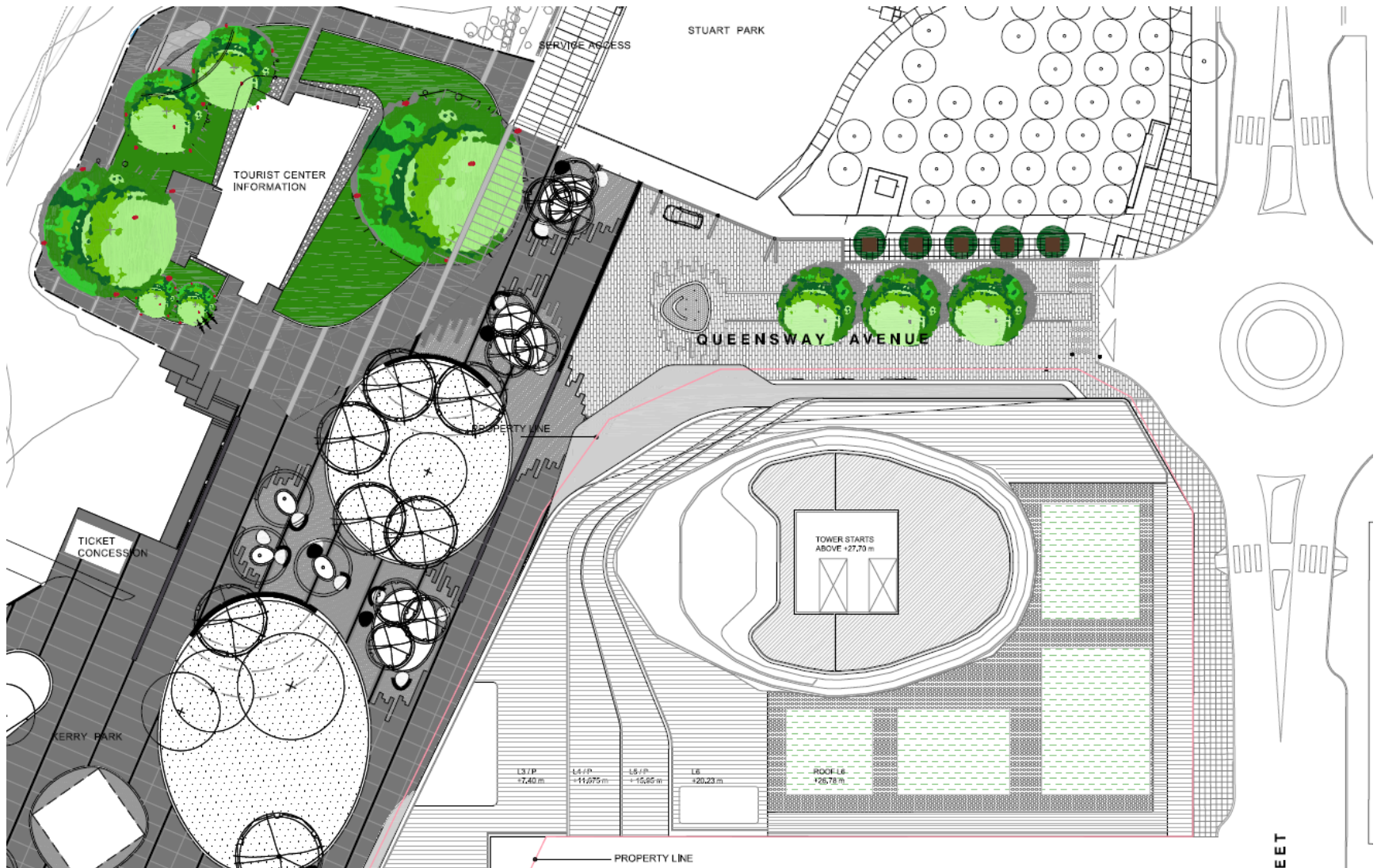
August 27, 2018



Background

- ▶ Staff outlined the potential for a unique plaza collaboration on Feb. 20, 2018
- ▶ Designed to enhance pedestrian experience at entrance to Kerry Park
- ▶ Governs the area beside Visitor Information Centre and proposed Westcorp building

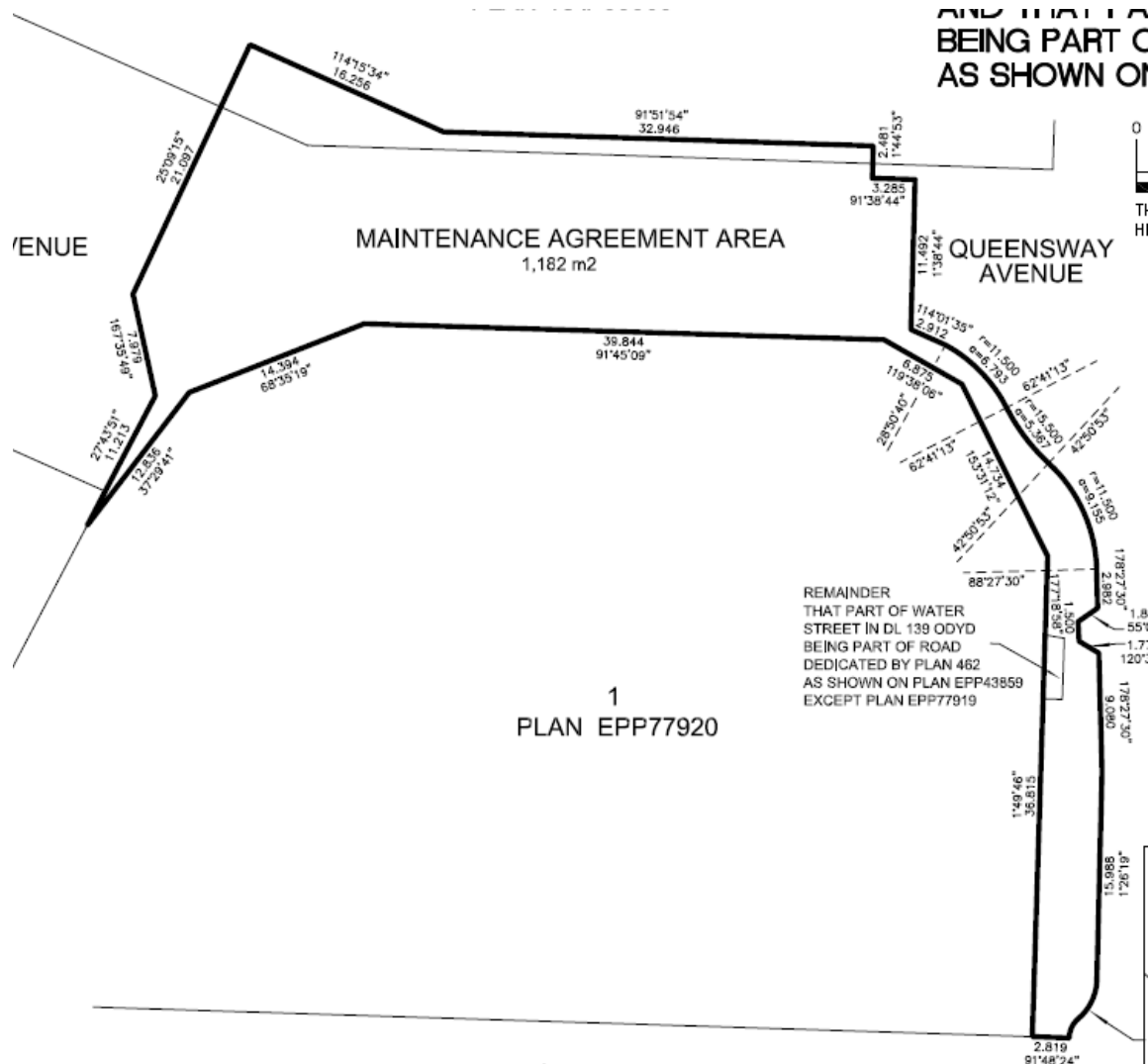
Context Map



Background

- ▶ High quality materials - intent of stimulating year-round use and creating a vibrant streetscape;
- ▶ Full cost and construction of plaza to be borne by Westcorp;
- ▶ Agreements to govern ongoing maintenance and upkeep;
- ▶ Due to higher Construction standards than typical for public roads;

Maintenance Area



Key Agreement Considerations

- ▶ Snow removal;
- ▶ Landscaping maintenance;
- ▶ Supply and maintenance of landscape irrigation;
- ▶ Brickwork maintenance standards;
- ▶ Utility repair standards;
- ▶ Indemnities and insurance requirements;
- ▶ Ensures the plaza area remains public;
- ▶ Consideration for valet activities;
- ▶ Fountain and/or public art maintenance;
- ▶ Performance/Security Bond of \$32,000; and,
- ▶ Street light and furniture maintenance.



Questions?

For more information, visit kelowna.ca.