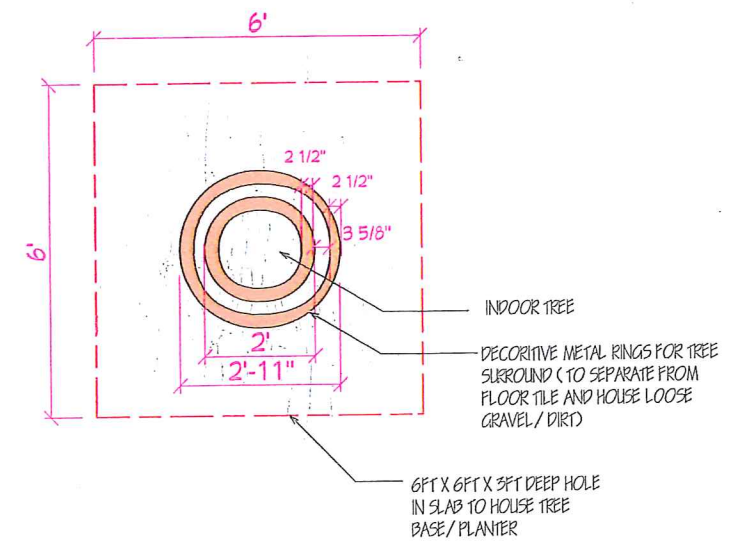
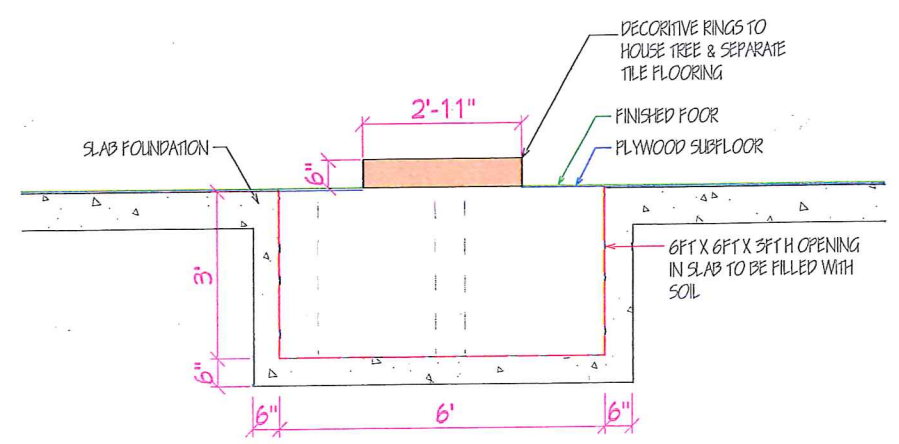


1 SALON FLOOR PLAN
ID1 1/2" = 1'-0"



2 INDOOR TREE FLOOR PLAN
ID2 5/8" = 1'-0"



3 INDOOR TREE DETAIL
ID2 5/8" = 1'-0"

Reviewed
by City of Kelowna
Inspection Service
MAY 17/18
J.W.

The HAIR SALON
has a net floor area of
35.67 m². The maximum
occupant load shall be
29 persons, based on
1.2 m²/person

ID1

CONSTRUCTION PLAN

Scale: See Drawing Labels Date: 2018-05-10
Sheet: 1 OF 1 Drawn By: Hannah McNee, DIAD

MOD SALON INC. & style bar
4649 LAKESHORE ROAD
KELOWNA, BC

GENERAL NOTES:

1. Do not scale from drawings.
2. All work to conform to the applicable building code.
3. Report any errors or discrepancies to designer prior to construction.
4. Verify all dimensions on site and information prior to construction.
5. These drawings are published and owned by Creative Touch Interiors Inc., all rights are reserved including but not limited to rights of reproduction.

