

**Healthy City
Strategy**



Community for All Action Plan Implementation Progress Update

Healthy City Strategy
kelowna.ca/planningprojects



Healthy City Strategy

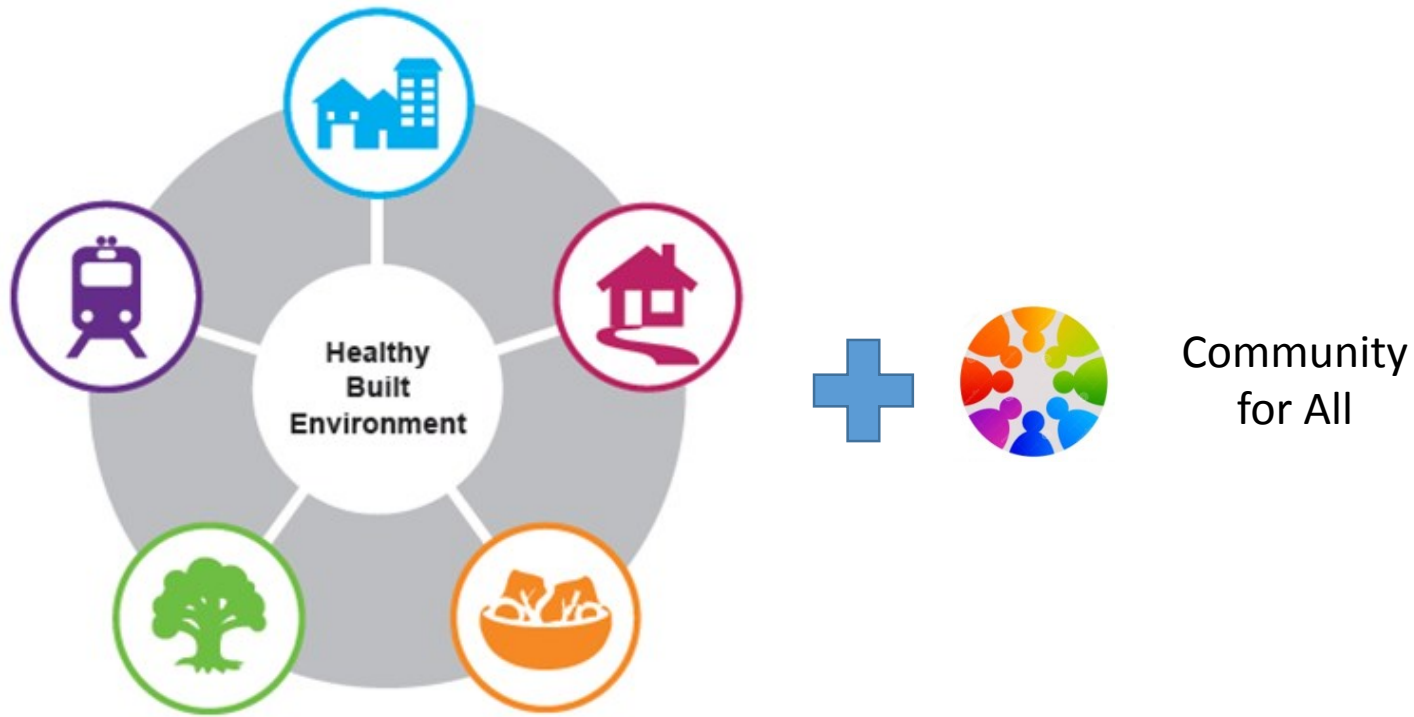
The Healthy City Strategy will be a long-term, integrative plan that will focus on healthy built environment, community health and quality of life for all Kelowna residents.

Vision:

- *Working together to create built environments in which people and places thrive.*



Healthy City Strategy Theme areas



Community for All

Vision: A city that is healthy, safe, active & inclusive for seniors, children and those with diverse abilities



Actions

- 31 actions created;
- 21 actions led by the City;
- 10 actions led by community stakeholders;
- Actions either implemented or explored in 2017 – 2018.



Summary of 2017 Actions

Status of Actions	Number of Actions
Complete	8
Ongoing	7
In progress	6
Not proceeding	3

Key Highlights: Community for All Assessments

- Infrastructure assessed 157 City parks and 76 City buildings with a focus on accessibility;
- Rick Hansen Foundation Accessibility Certification;
- Accessibility Guide.




Accessibility Guide



People In Motion has compiled a comprehensive **Online Accessibility Guide** for the Central Okanagan. Whether you are a resident, or just visiting the area, and you or family member have a physical disability or mobility concern, this guide will assist you in finding accessible resources in our community. Please select the category you would like to view, or search in the box below:

ACCESSIBILITY INVENTORY FOR KELOWNA & DISTRICT

 SEARCH

 SUBMIT A BUSINESS

[Home](#) / [Find a Business](#)



Disability
Services



Dining



Kelowna Parks
& Buildings



Hotels



Shopping



Things to Do



Other Services

Other Key Highlights



- Healthy Housing Strategy, second theme area;
- “Sport for Life” incorporated into the City’s Community Sport Plan;
- Ongoing accessibility retrofit budget.

New Actions for 2018

- Create a Neighbourhood Champion volunteer program;
- Promote Parks and Building Assessments to other organizations and businesses;
- Enhance communication for the pedestrian and bicycle network;
- Expand wayfinding signage network; and
- Conduct an accessibility parking program review.

Questions?