

Connecting Our Region

Our first region-wide transportation plan



The Regional Transportation Plan will help shape the future of the Central Okanagan Region by identifying the transportation investments that will be needed over the next 20 years.

Strengthening economic competitiveness and quality of life

Transportation across the region provides a vital connection to jobs, markets, health care, education, recreation, shopping, emergency services and family and friends.

By 2040, population in the Central Okanagan is expected to increase by nearly 40% — that's almost 77,000 new residents.

Currently, 24% of all trips in the Central Okanagan cross municipal boundaries, as people travel from one community to another to access services and employment.

Approximately 42% of trips taken by Lake Country, West Kelowna, Westbank First Nation and Peachland residents cross municipal boundaries.



Working collaboratively to ensure all communities have a voice

The regional planning process builds on work started in 2014. At that time, transportation planners asked residents and elected officials to identify their collective vision and goals for regional transportation.

These investments will help keep our region moving – and help strengthen our economy and quality of life.



Connecting Our Region

Our first region-wide transportation plan



MORE THAN 250 PEOPLE ATTENDED FOUR POP-UP OPEN HOUSES

From April 14 to May 7, 2018, residents were invited to have their say about the vision and goals for the Regional Transportation Plan, and to identify the regional destinations that are important.

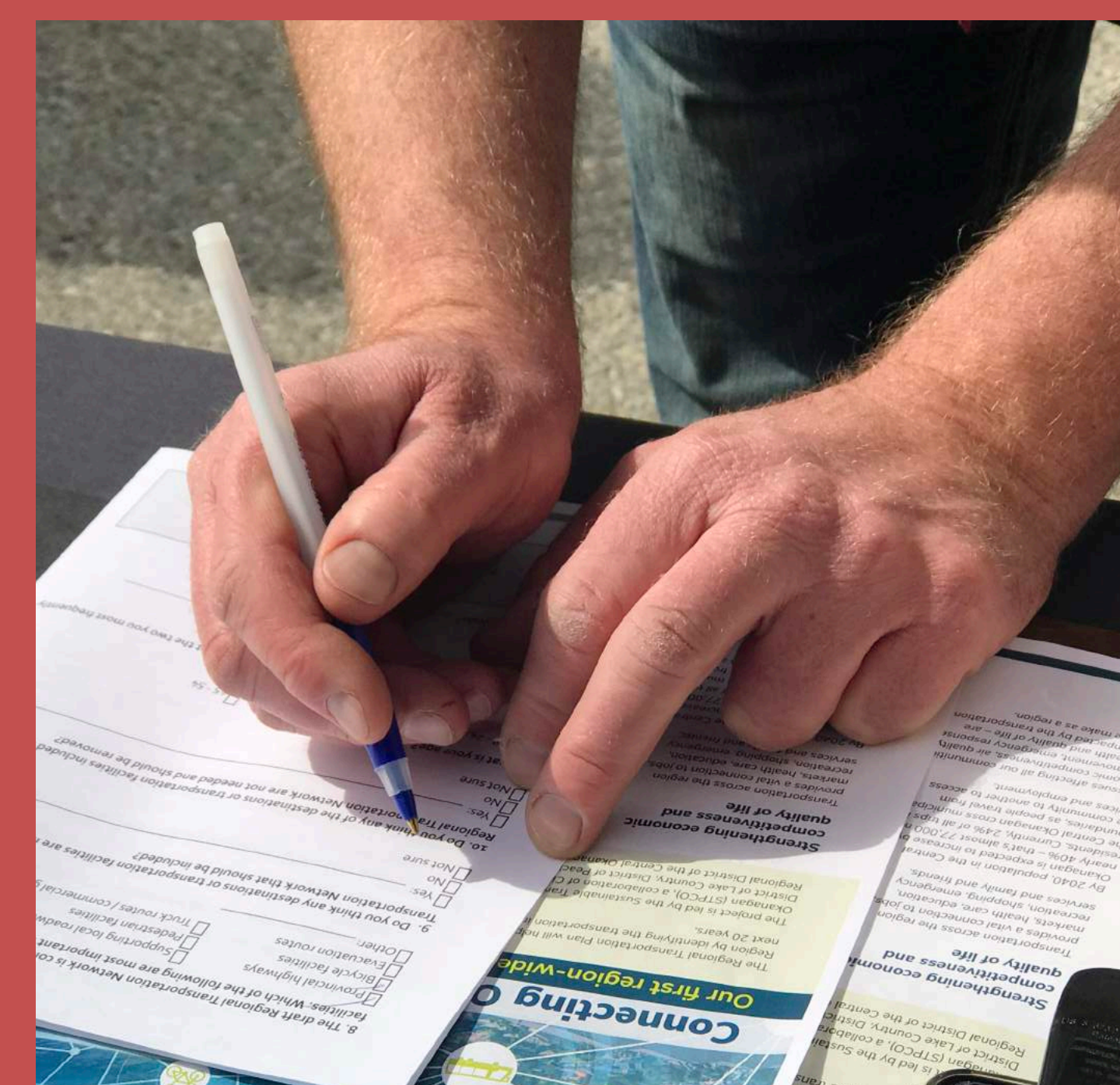
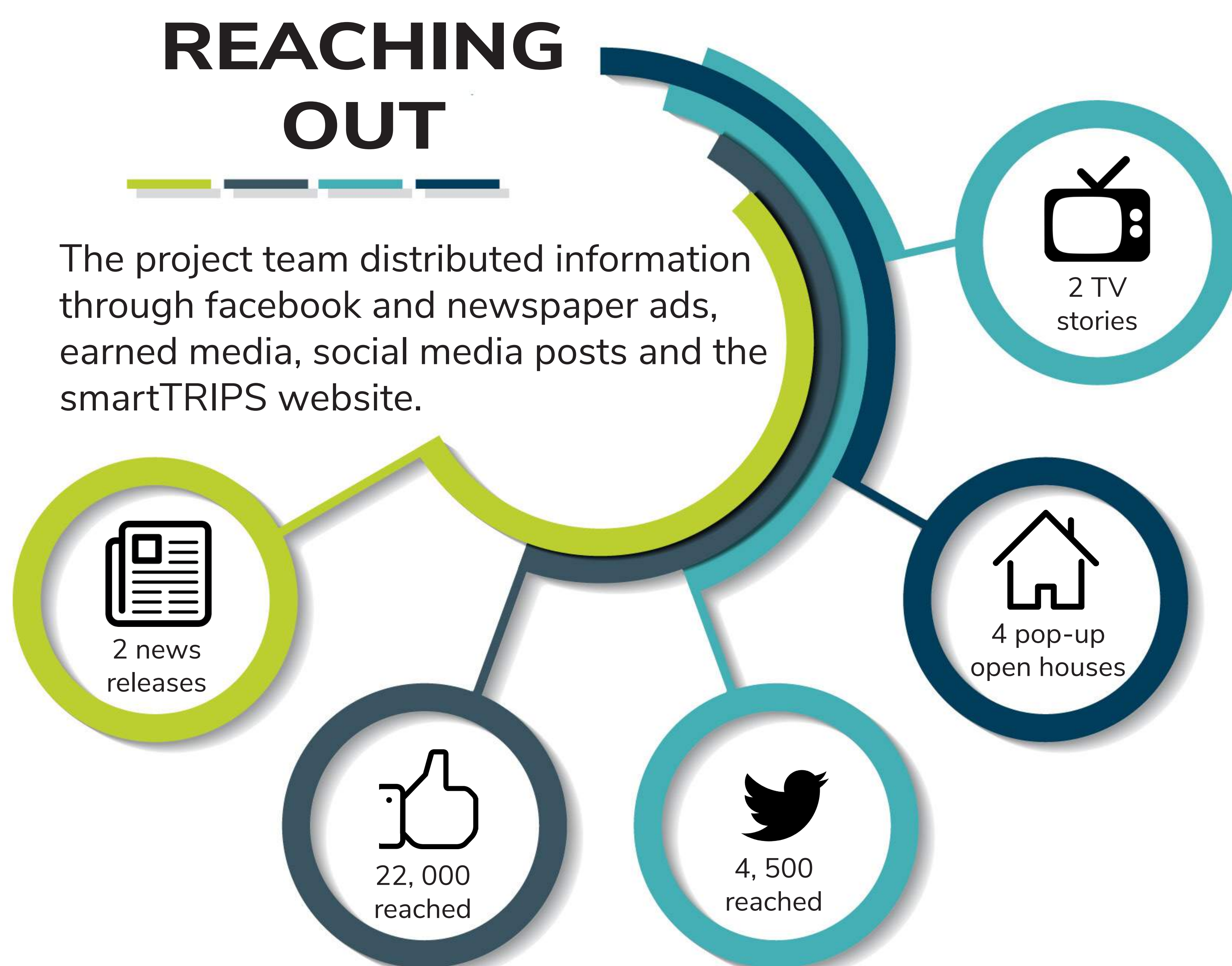
More than 250 people dropped by pop-up open houses in Peachland, Lake Country, Kelowna, and West Kelowna and Westbank First Nation. Five large storyboards described the draft vision and goals and identified regional destinations.

Community	Date	Location	# of attendees
Peachland	April 14, 2018	Peachland Rubber Ducky Race	60 people
Lake Country	April 16, 2018	George Elliot Secondary School	70 people
Kelowna	April 17, 2018	Parkinson Recreation Centre	63 people
West Kelowna/Westbank First Nation	April 19, 2018	Real Canadian Superstore	60 people



633 PEOPLE COMPLETED A SURVEY

More than 550 people filled out an online survey and about 80 people filled out a hardcopy survey at locations and events throughout the region.



This survey is a mechanism for people to share their interests and opinions. The results of the survey are qualitative and not statistically significant. The results are not meant to represent the views of all residents. The survey provides a useful indication of the views and perspectives of the people who completed it.

Connecting Our Region

Our first region-wide transportation plan



WHAT WE HEARD

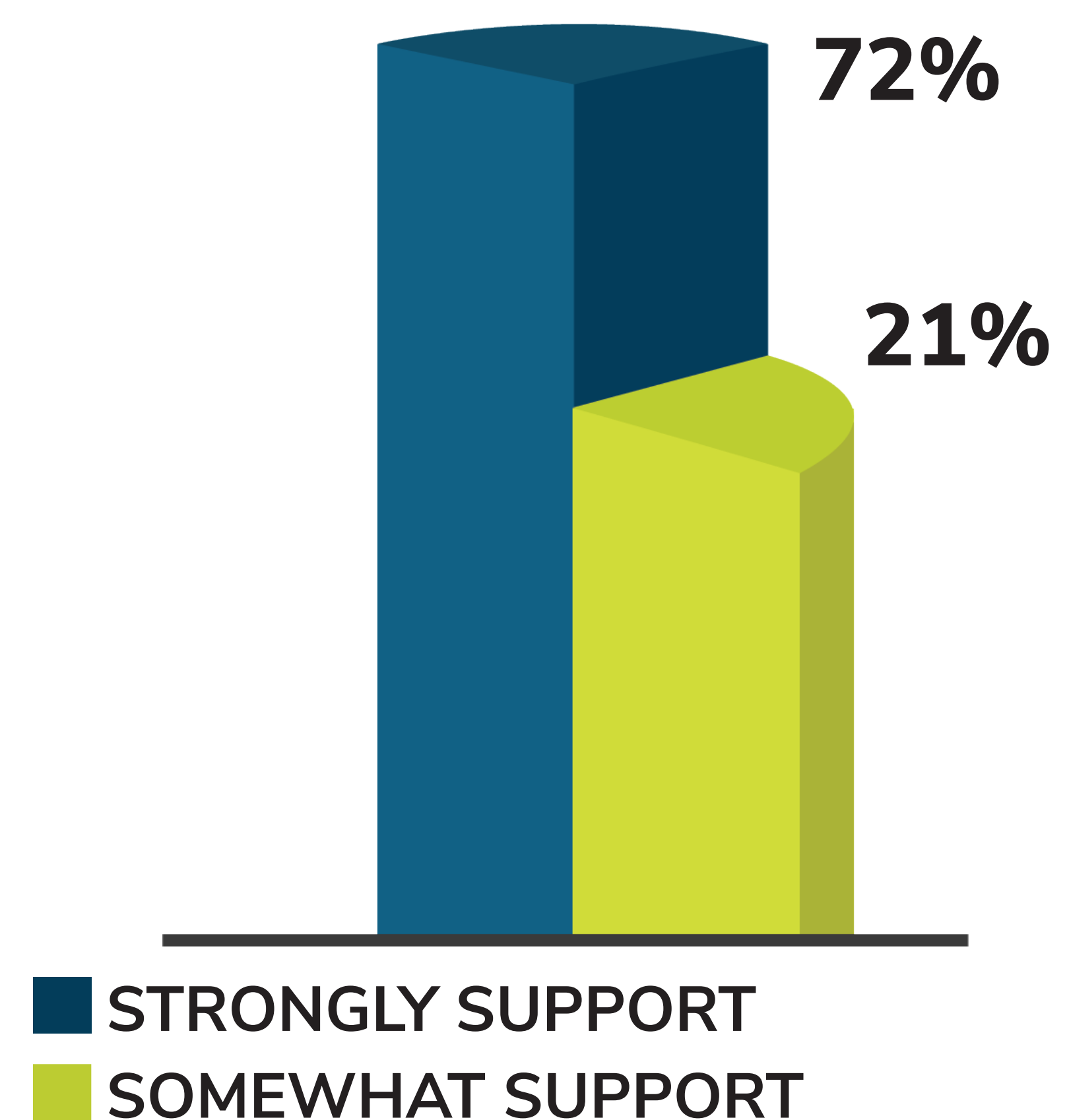
Connecting our Region – Survey Responses

Nearly 80% of survey respondents said accessing work, school or services in the Central Okanagan outside their home community is very important or moderately important. About 20% said it is of low importance, not at all important, or they don't know.

93% STRONGLY OR SOMEWHAT SUPPORT THE DRAFT VISION

The Draft Vision

“A balanced and resilient transportation system for the Central Okanagan that moves people and goods in a safe, efficient, accessible and affordable manner, while supporting and enhancing the region’s economy, social network, and natural ecosystem”



Regional Destinations

The three most important regional destinations identified by respondents are:



Major Transportation Facilities

e.g. airport, BC Transit, Greyhound



Hospitals and Major Medical Facilities



Town Centres

Modes of Transportation

The two most frequently used modes of transportation are:



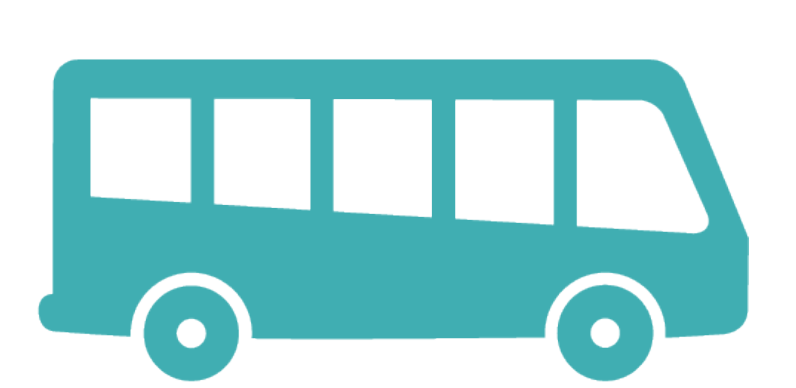
86%



43%



33%



18%

Percentage of respondents who indicated this mode is one of their two most frequently used modes of transport

Survey respondents were asked - “Is there anything you would change about the vision statement?”

The following themes emerged:

- » Make it more specific and less broad
- » Clarify what balanced and resilient mean
- » Emphasize environmentally friendly, low carbon transportation
- » Emphasize transportation choice and a multi-modal system that includes walk, bike, transit, and vehicle options
- » Consider people of all abilities and incomes, including seniors

“It is important that seniors, those with health/disability issues, and low incomes have access to reasonably priced transportation that gets them to the places they must go.” – survey respondent

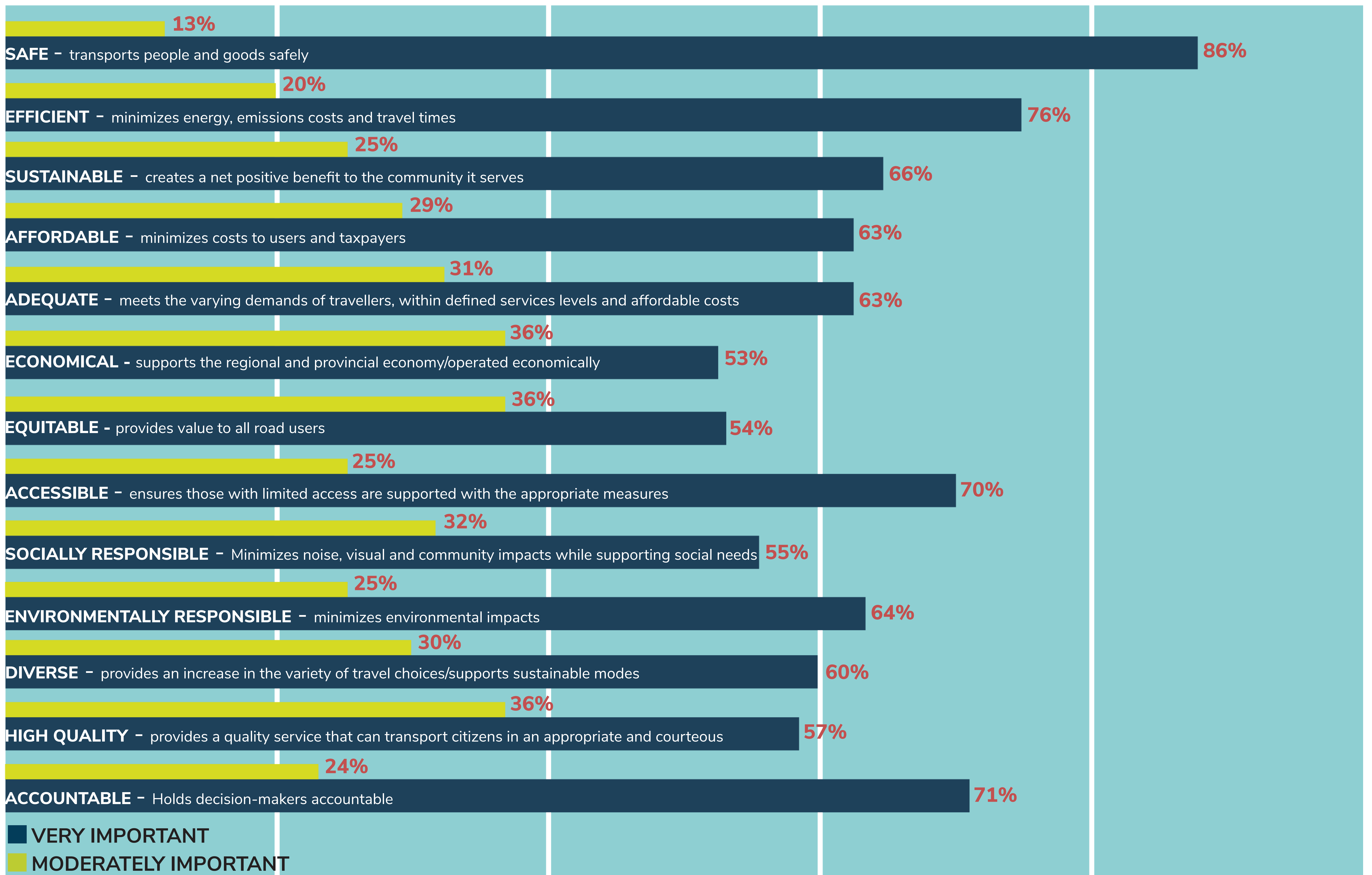
Connecting Our Region

Our first region-wide transportation plan



WHAT WE HEARD

The Draft Goals - Most respondents indicated the draft goals were very important or moderately important.



■ VERY IMPORTANT
■ MODERATELY IMPORTANT

Survey respondents were asked - "Is there anything else you would like to tell us about the draft vision and goals?"

The following themes emerged:

- » Ensure safe biking routes in urban and suburban areas
- » Improve the safety and accessibility of walking routes
- » Improve transit in all communities
- » Provide low cost options for people of all incomes and abilities
- » Consider the transportation needs of rural areas
- » Reduce congestion and increase efficiency for vehicle travel
- » Complete and connect biking, hiking and walking routes within and across communities

"You can't live here without owning a vehicle to get around. This needs to be fixed." – survey respondent

The Regional Transportation Plan is a project of the Sustainable Transportation Partnership of the Central Okanagan (STPCO).

For more information please email info@smartTRIPS.ca or visit www.smartTRIPS.ca

