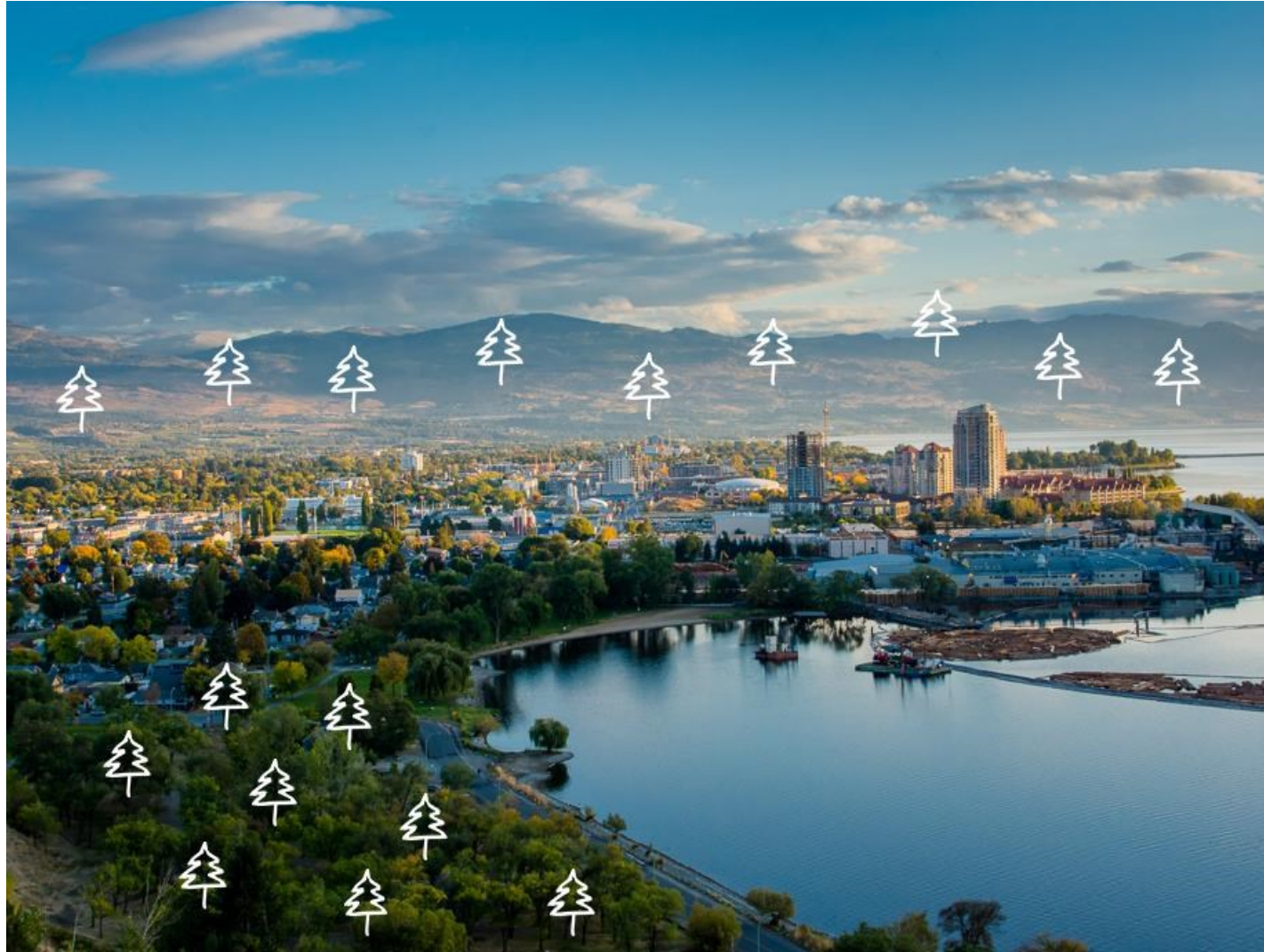


# Our Kelowna

## Facts in Focus: Financing the Plan



# Kelowna's population is expected to add 50,000 new residents by 2040





# Funding is needed to support growth-related infrastructure



# The Role of Municipal Infrastructure




- ▶ Real Property Assets
  - ▶ Provide the physical structure of municipal services
- ▶ Play a critical role:
  - ▶ Achieving quality of life
  - ▶ Enhancing competitiveness & prosperity
  - ▶ Being innovative & adaptable
  - ▶ Protecting the environment
  - ▶ Achieving community goals
- ▶ Substantial part of taxation and budget

# 20 Year Servicing Plan

- ▶ Purpose: To provide a detailed analysis of the major servicing needs req'd to service growth projections as per the OCP
- ▶ Integrates the servicing & financing strategy with the growth plan to ensure that the OCP is affordable in the form that Council and the community is being asked to support

# Varying Costs to Service Growth

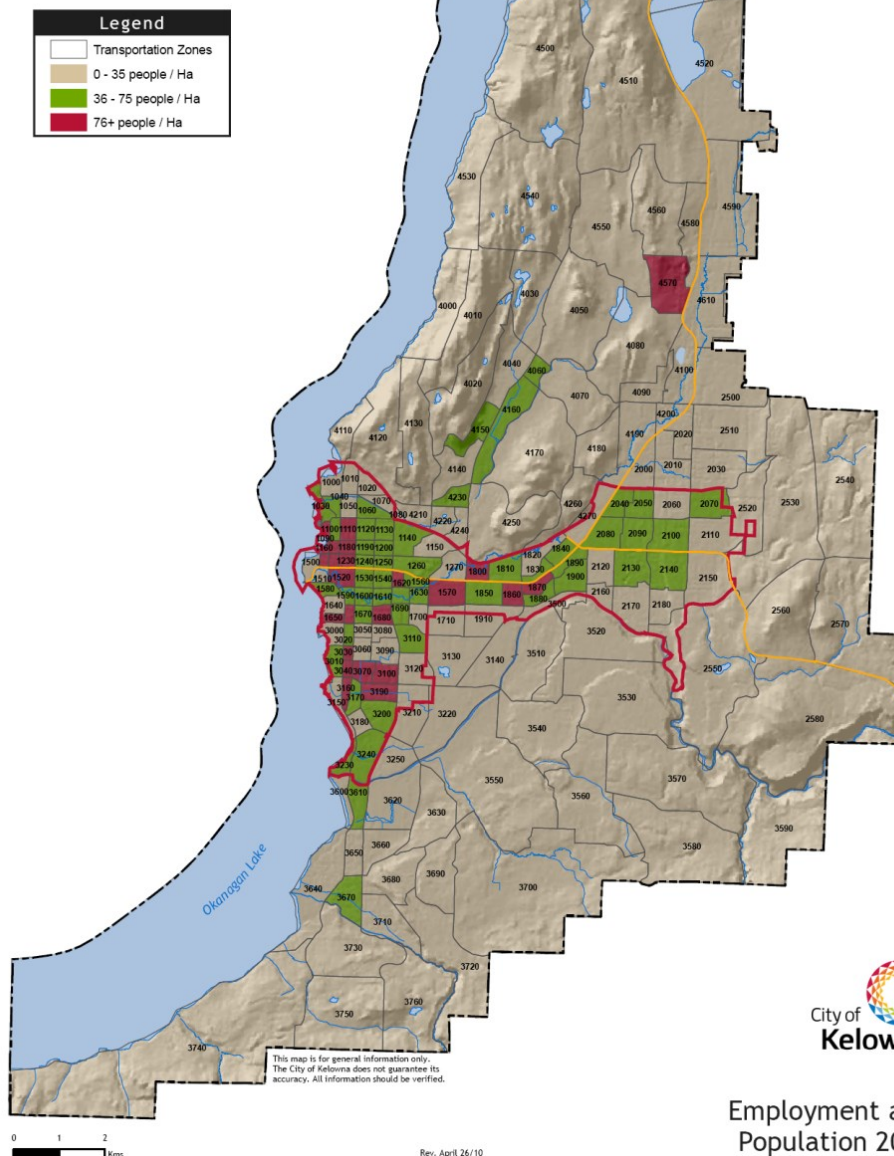
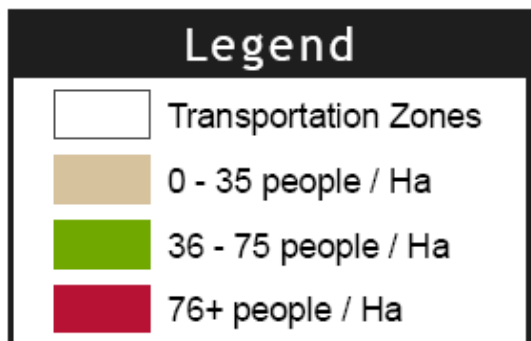
Naturalized      Rural      Suburban      Urban Core      Downtown

A large blue double-headed arrow pointing left and right, spanning the width of the slide, positioned below the labels.

- ▶ Capital Costs higher for rural/ suburban areas
- ▶ Long-term replacement & operation costs increasing
- ▶ Indirect costs: loss of agricultural lands, health impacts and GHG emissions in rural/suburban areas



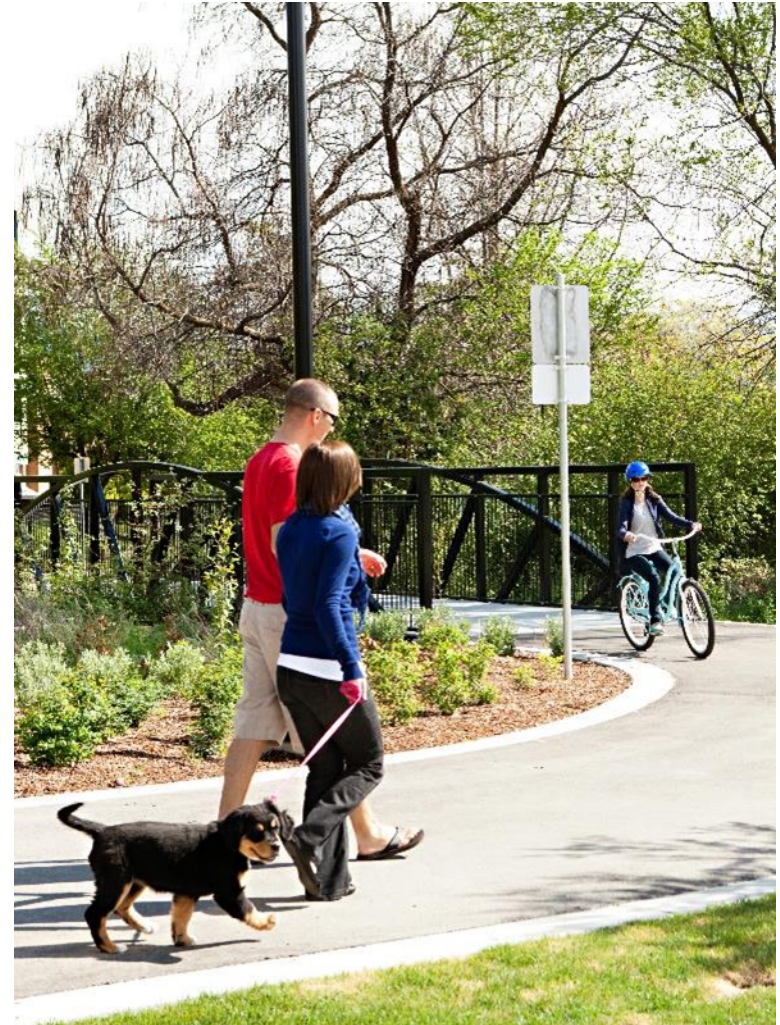
# 2030 OCP Goal: *Prioritize higher density of Urban Core*



# Build on OCP 2030 Directions



- ▶ Growth in Urban Centres
- ▶ Housing mix
- ▶ DCC framework
- ▶ Life cycle costs for infrastructure
- ▶ Infrastructure that supports multiple objectives





# Areas to explore

- ▶ Many priorities  
limited resources
- ▶ DCC principals
- ▶ New funding tools
- ▶ Green infrastructure  
& climate adaptation



# Looking Ahead: Future Trends



## **Kelowna council confronted by reality of climate change**

*By John McDonald*



# Key 2040 Directions:

- ▶ Strengthen the protection of our land, water and air resources
- ▶ Review land use planning from a fiscal lens
- ▶ Focus development in less car dependent areas
- ▶ Prioritize investment in Urban Core
- ▶ Update funding strategies to support urban centre growth
- ▶ Review DCC program principals
- ▶ Integrate green infrastructure





## *Questions?*

For more information, visit [kelowna.ca/imagenext](http://kelowna.ca/imagenext)