




Sewer Connection Charges

Proposed Bylaw 11540



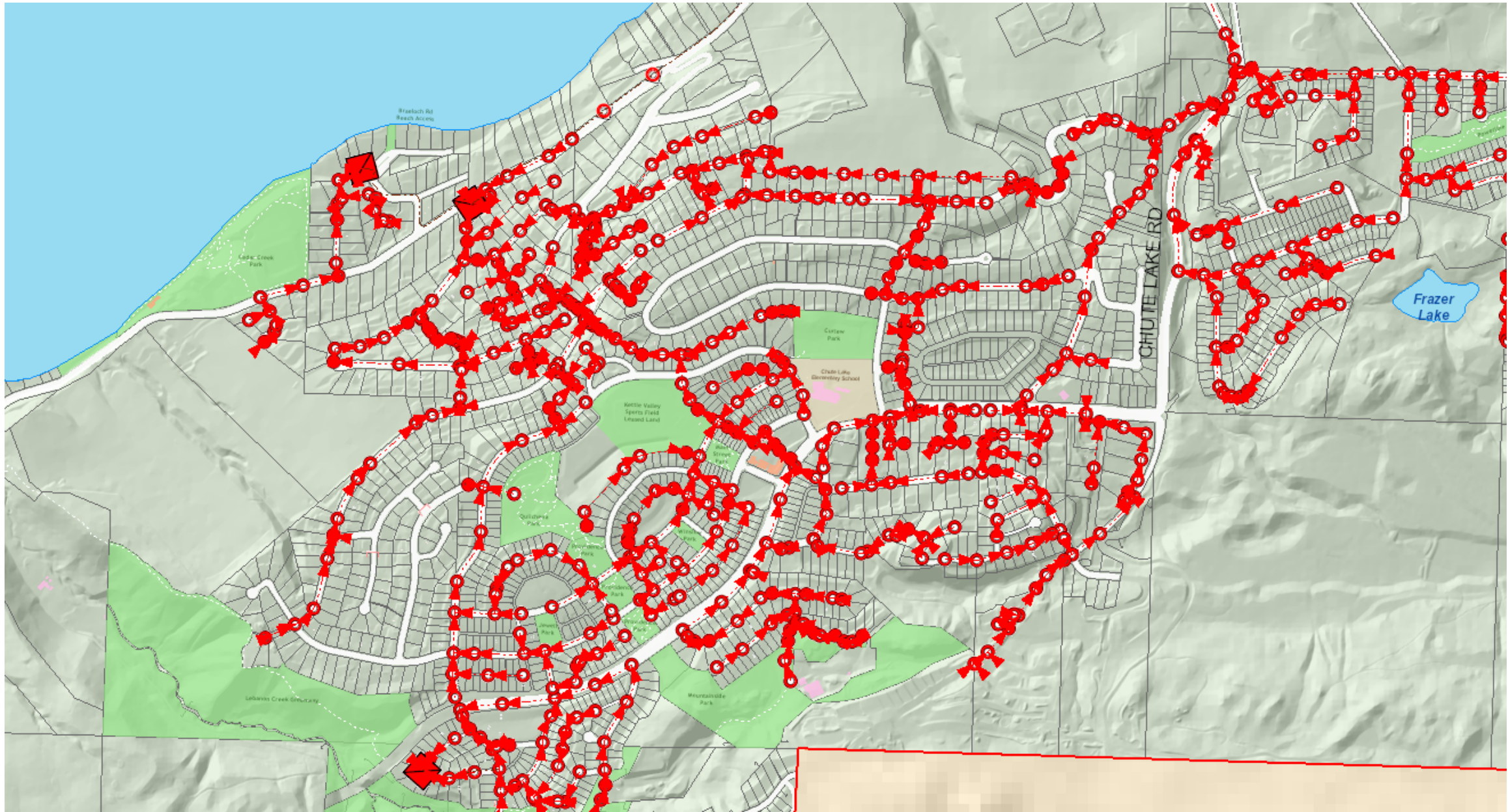
Purpose of Bylaw

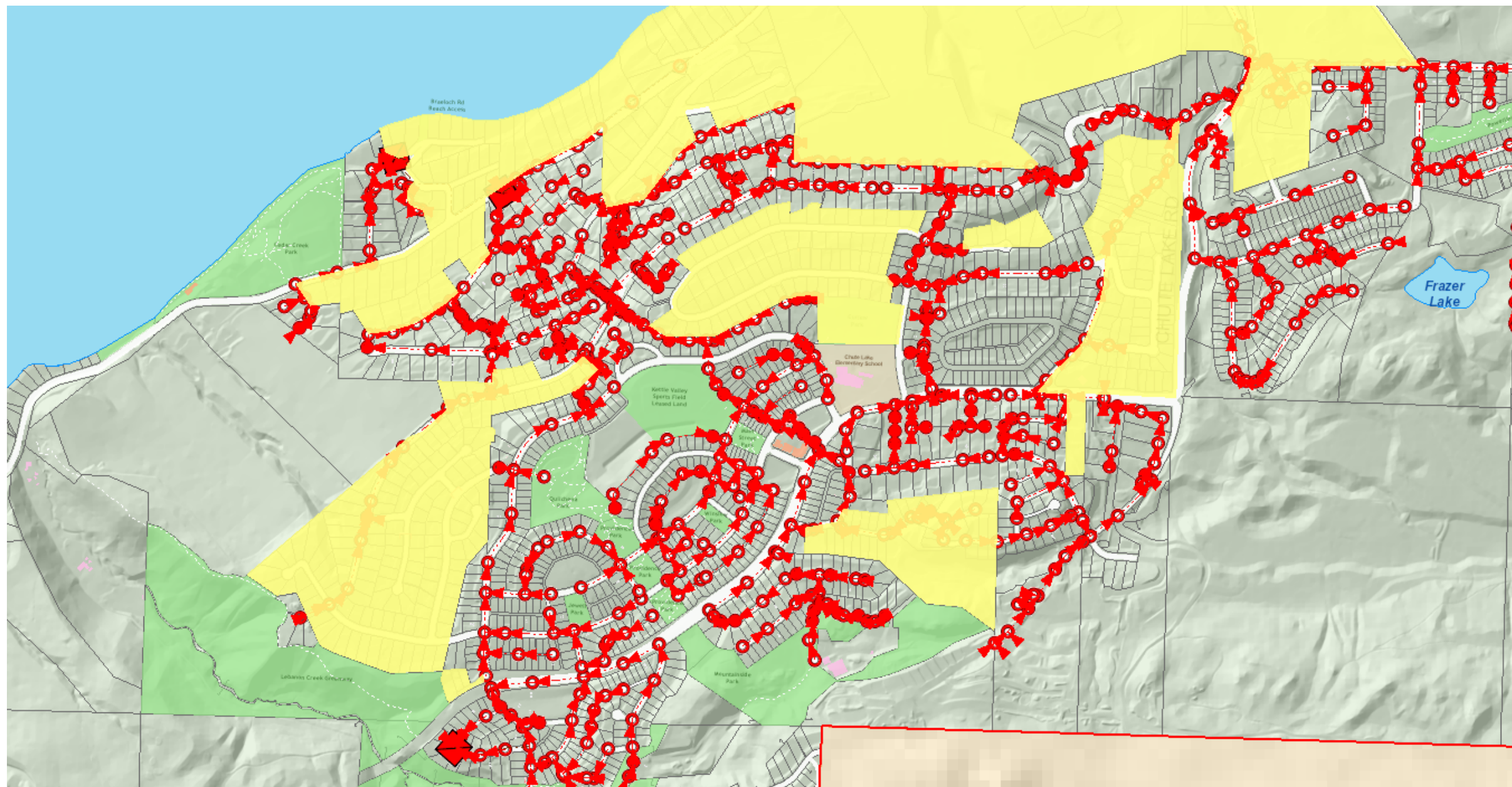
- ▶ To provide a fee structure to charge existing property owners who are currently on private septic or waste systems to connect to the City sewer system.
- ▶ To recover the cost of the installation of sewer trunk mains, sewer collector mains and sewer service lines constructed when opportunity exists,
- ▶ To permit the owners of real property in the area to connect to and use the sewage collection and treatment service of the City.



Purpose (cont'd)

- ▶ All connection charges must be paid to the City prior to and as a condition of allowing the installation or usage of a sewer connection to a parcel.
- ▶ Repeal Bylaw 8469







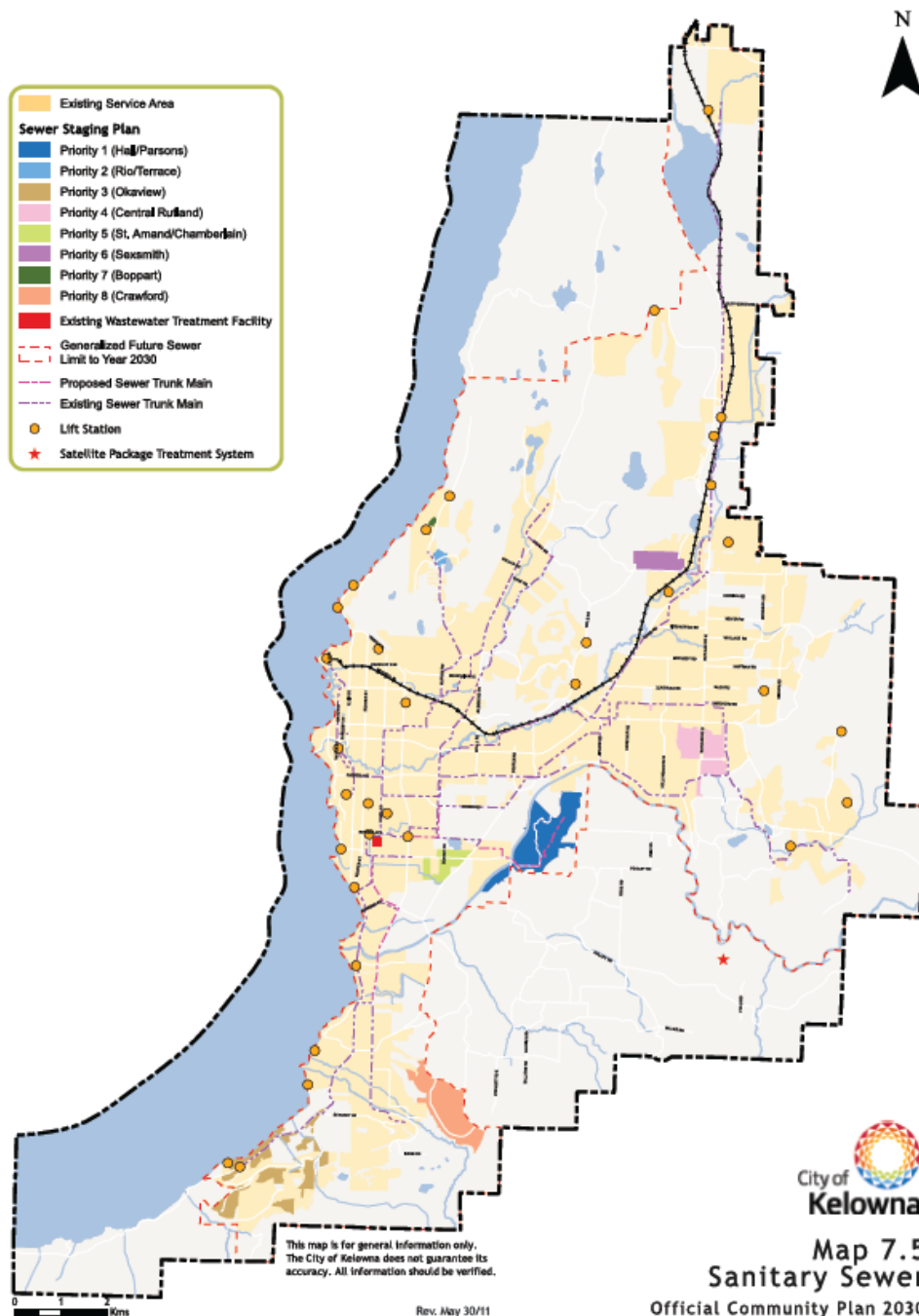
Calculation

- ▶ Identify Area
- ▶ Sum of
 - ▶ Construction Cost (2018) to install sewer infrastructure
 - ▶ All Sewer Connections to the property line
 - ▶ Subtraction of infrastructure costs completed by developers/latecomers
 - ▶ Subtraction of fees paid by development
- ▶ Divide by number of Single Family Equivalents

Charge = \$/SFE

Sewer Connection Charges

Area No.	Connection Area	Remaining SFE	Estimated Remaining Costs to be Paid or Recovered	Charge per SFE
16	Rio/Terrace	55	\$569,000	\$10,300
20	Rutland North	Set to LAS No. 20 Commutation Price		\$2,100
21	Rutland – McKenzie Bench	Set to LAS No. 21A Commutation Price		\$1,300
22	Central Rutland	567	\$8,269,000	\$14,600
23	Rutland South West	Set to LAS No. 23 Commutation Price		\$5,500
25	St Amand/Chamberlain	55	\$656,000	\$11,900
27	Hall Road	400	\$12,738,000	\$31,800
28	Okaview	459	\$7,442,000	\$16,200
31	Boppart	12	\$165,000	\$13,800
32	North End Industrial	1480	\$3,850,000	\$2,600
35	Sexsmith/Appaloosa	55	\$731,000	\$13,300
37-1	Clifton Road North - Connector 1	28	\$177,520	\$6,340
37-2	Clifton Road North - Connector 2	26	\$100,620	\$3,870
37-3	Clifton Road North - Connector 3	10	\$121,800	\$12,180
38	Crawford	480	\$13,018,000	\$27,100



Map 7.5
Sanitary Sewer
Official Community Plan 2030

37 North Clifton Extension

Zone 1 \$ 6,340

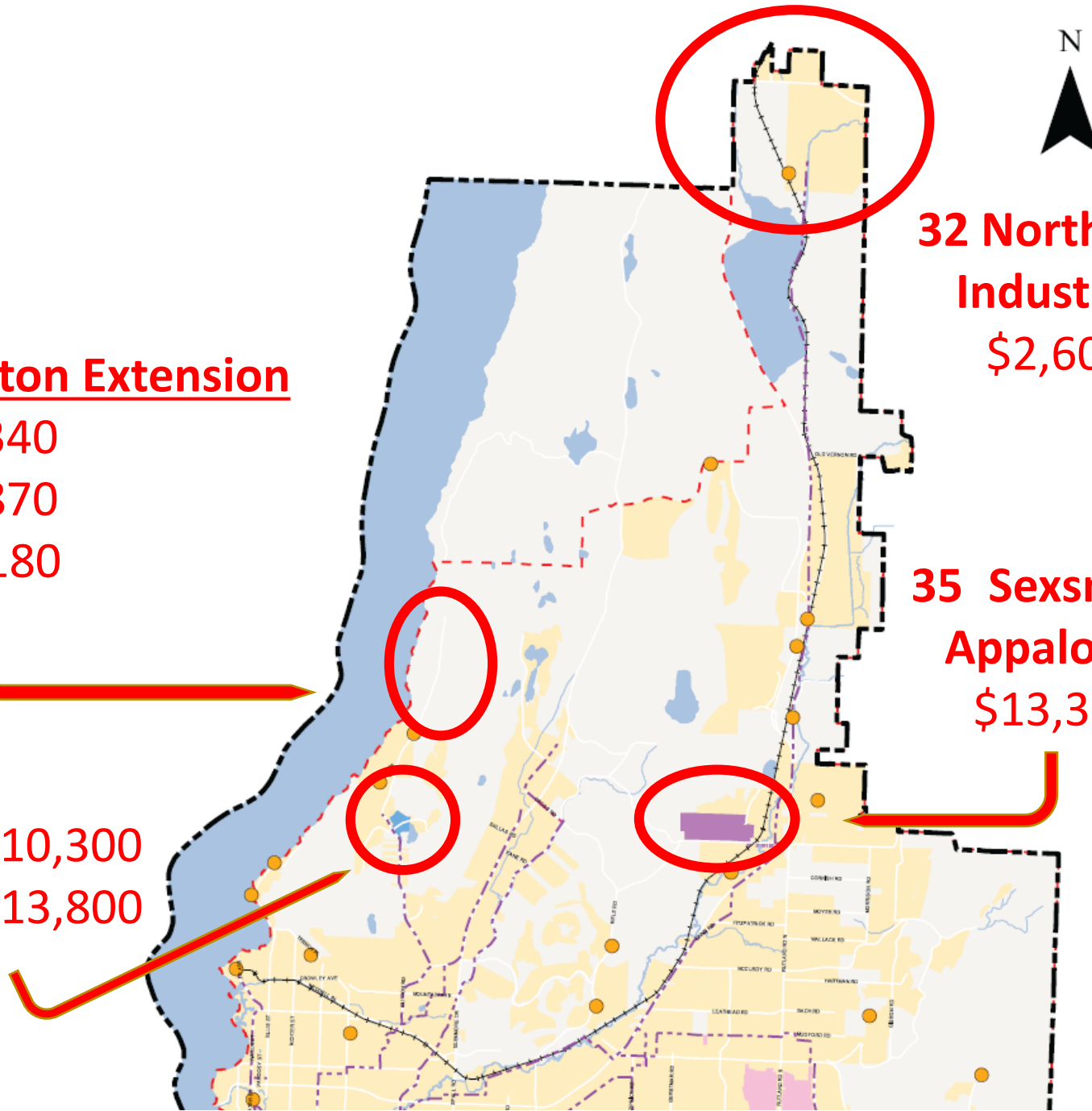
Zone 2 \$ 3,870

Zone 3 \$12,180

16 Rio \$10,300
31 Boppart \$13,800

32 North End
Industrial
\$2,600

35 Sexsmith/
Appaloosa
\$13,300



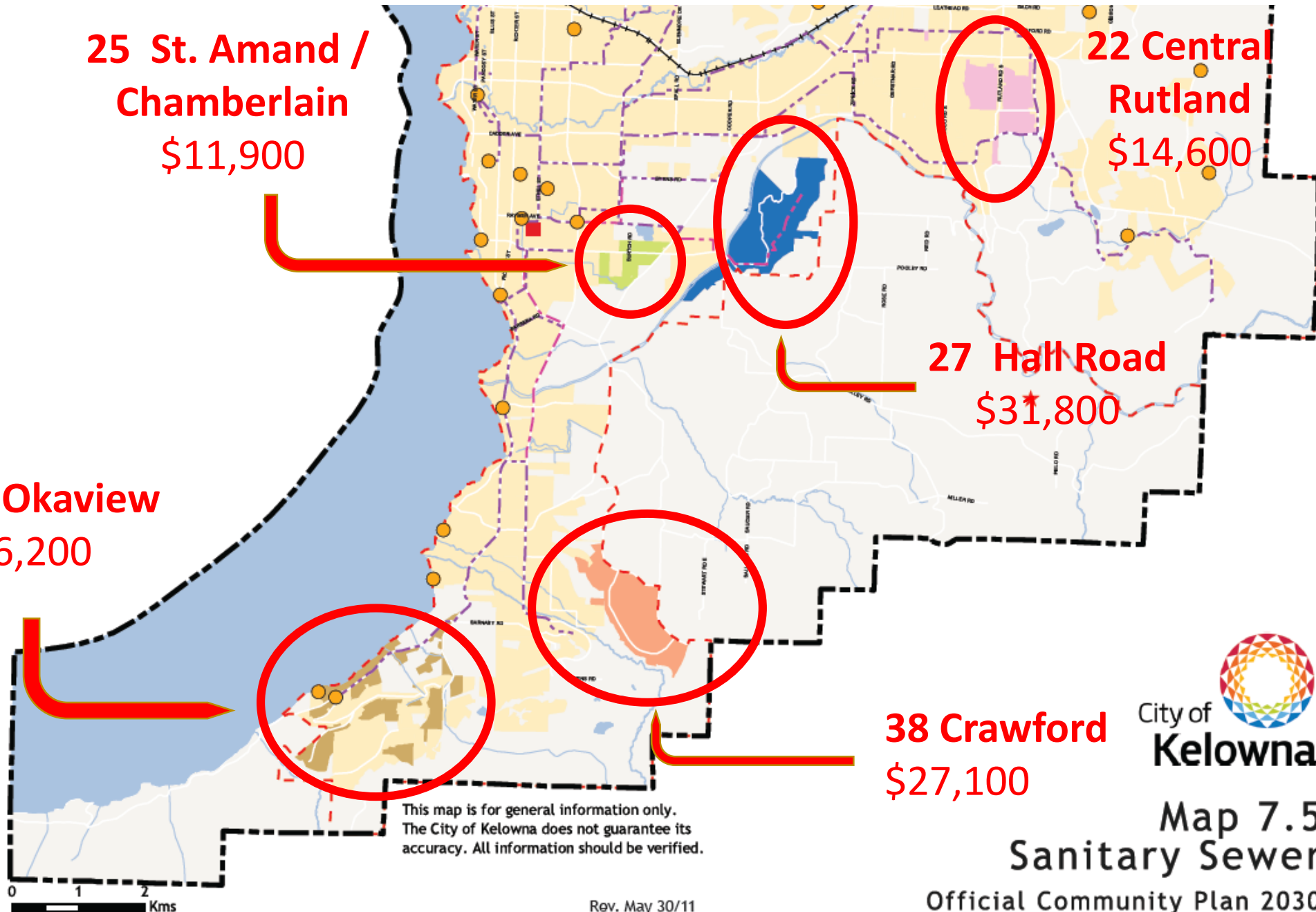
**25 St. Amand /
Chamberlain**
\$11,900

**22 Central
Rutland**
\$14,600

27 Hall Road
\$31,800

28 Okaview
\$16,200

38 Crawford
\$27,100



**Map 7.5
Sanitary Sewer**
Official Community Plan 2030

Rev. May 30/11



Questions