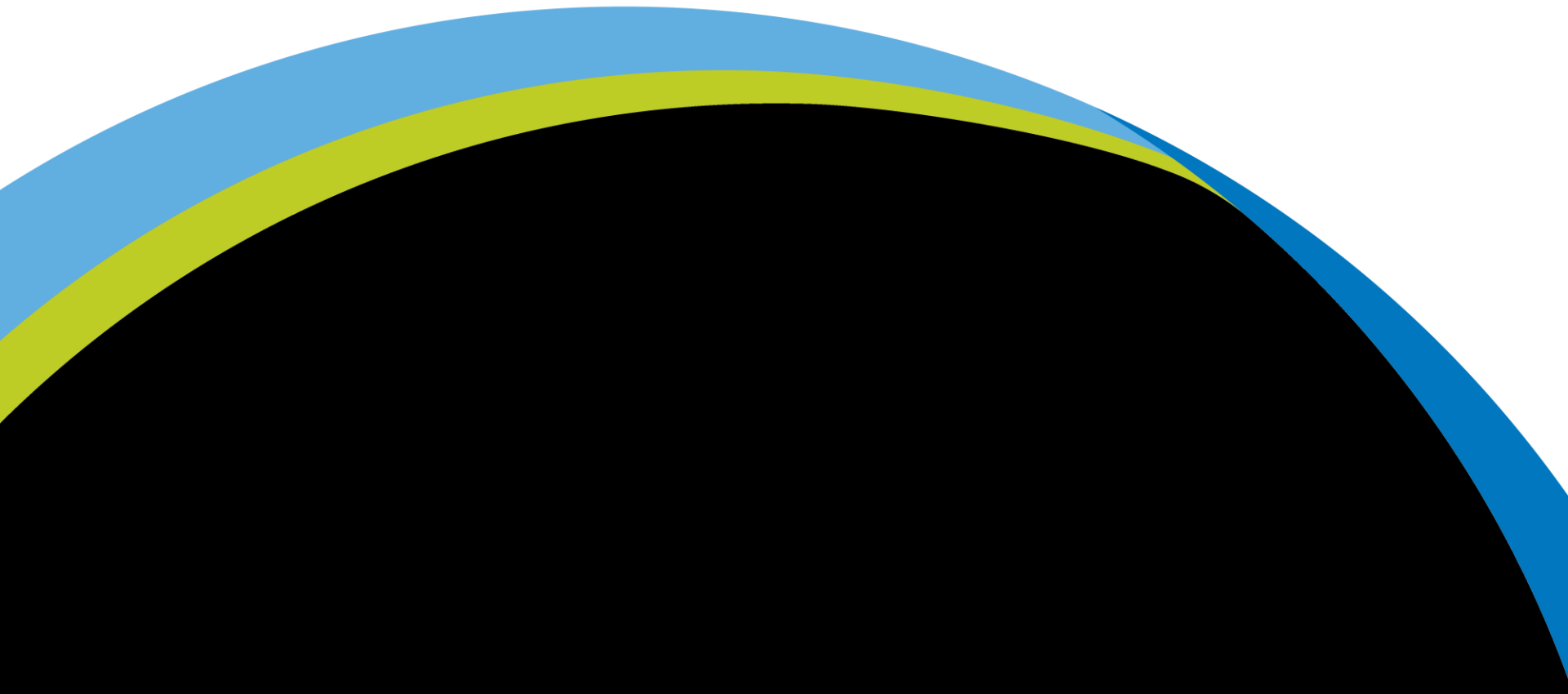


**GLENMORE LANDFILL
OPERATIONS BUILDING AND MECHANIC
SHOP - BUDGET AMENDMENT
FEBRUARY 5, 2018**



OUTLINE

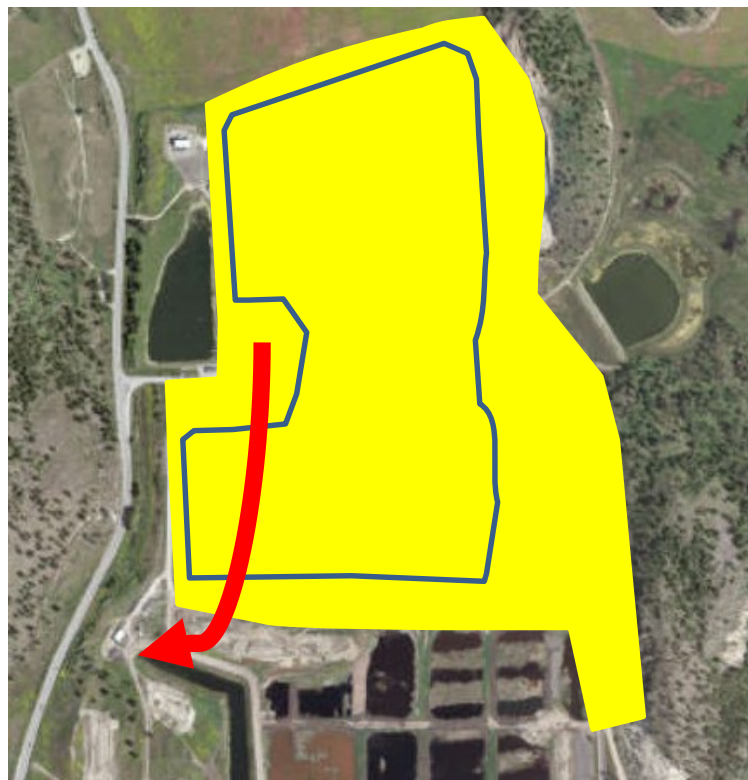
- Need for new building
- New building function and concept
- Planned to allow for long term use

LANDFILL NEED FOR BUILDING

 Current footprint

 Footprint being phased over next 8 years

Requires relocation of storage and maintenance infrastructure



EXISTING OPERATIONS BUILDINGS

- Dry storage for daily cover
- Daily Cover and Fire Suppression Trailer
- Tool shed/workshop

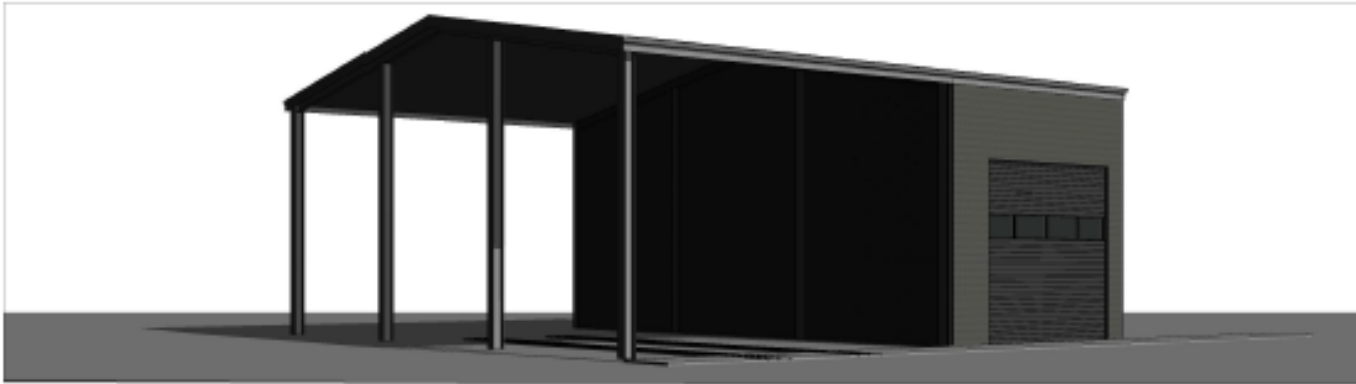


MECHANIC WORK AREA

- Soft ground, difficult to access underside of machines
 - Mud, ice or standing water in winter
 - Dusty conditions in summer
-
- * Need clean and safe work environment
 - * Better access and conditions improves performance



ARCHITECTURAL CONCEPT



- Enclosed area (right side) replaces current **STORAGE building**
- Left side adds covered area for heavy landfill equipment servicing and maintenance
- Addresses servicing requirements, foundation requirements, Landfill Gas Regulation safety requirements, and BC Building Code

FLEXIBILITY FOR FUTURE



Building design allows for future staged expansion as landfill and fleet service needs grow onsite

Examples may include

- Enclose the open equipment servicing area
- Add wash bay and storage
- Include second covered equipment bay

QUESTIONS?

